

Catalog Number	
Notes	Type

FEATURES & SPECIFICATIONS

CONSTRUCTION

Flat-bottom acrylic prismatic diffuser with sonic-welded, injection-molded, luminous ends.

Diffuser hinges open from either side for easy maintenance.

Available in tandem-wired lengths.

Optional high-impact-resistant diffuser available — stronger than standard acrylic. **Certain airborne contaminants can diminish integrity of acrylic.** [Click here for Acrylic Environmental Compatibility table for suitable uses.](#)

For surface or stem mounting, individual installation.

Available with black body or in special colors. Contact Lithonia Lighting representative.

BALLAST

Thermally protected, resetting, Class P, HPF, non-PCB, UL listed, CSA-certified ballast is standard. Ballasts are sound rated A. Standard combinations are CBM approved and conform to UL 935.

Metal parts die-formed from code-gauge steel. Diffuser is 100% acrylic. No asbestos is used in this product.

ELECTRICAL SYSTEM

Fixture conforms to UL 1570 and is suitable for damp locations. AWM, TFN or THHN wire used throughout. Rated for required temperatures. All ballast leads extend a minimum of 6" through access plate.

FINISH

Five-stage, iron-phosphate pretreatment ensures superior paint adhesion and rust resistance. High-gloss, baked white enamel finish. All parts painted after fabrication.

LISTING

UL listed and labeled. Listed and labeled to comply with Canadian and Mexican Standards (see Options).

WARRANTY

Guaranteed for one year against mechanical defects in manufacture.

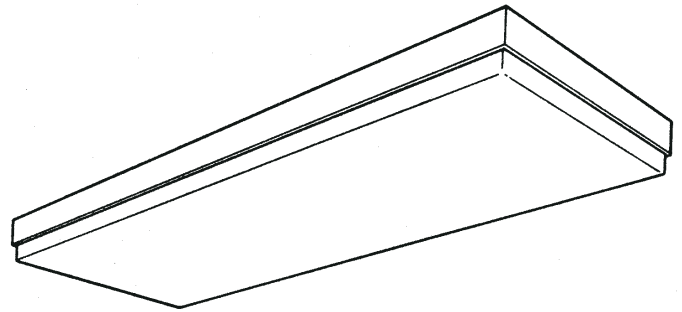
Specifications subject to change without notice.

Architectural Wraparound

AW

NARROWBODY

4' and 8' length
2 lamps



ORDERING INFORMATION

Example: **AW 2 32 AR MVOLT GEB10IS**

Series	Number of lamps	Lamp type	Diffuser	Voltage	Options
AW 2-lamp, 11-1/4" wide For tandem double length unit, add prefix T. Example: TAW	2 Not included	32 32W T8 (48") 28T5 28W T5 (48") ¹ 54T5HO 54W T5HO (48")	(blank) Prismatic acrylic AR High-impact prismatic acrylic (50% DR)	120 277 347 MVOLT Others available	GEB10 Electronic ballast, ≤10% THD GEB10PS Electronic ballast, ≤10% THD, program start EL Emergency battery pack (nominal 300 lumens; See Life Safety Section) GLR Internal fast-blow fuse ² GMF Internal slow-blow fuse ² RIF1 Radio interference filter (one per fixture) CSA Listed and labeled to comply with Canadian Standards NOM NOM Certified

Notes

- 28T5 and 54T5HO wattage require GEB10PS ballast.
- Must specify voltage.

Accessories

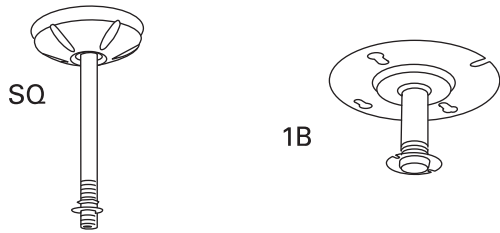
Order as separate catalog number.

- SQ** Swivel stem hanger (specify length in 2" increments).
- 1B** Ceiling spacer (1-1/2" to 2-1/2" from ceiling).

AW Architectural Wraparound, Narrow Body

MOUNTING DATA

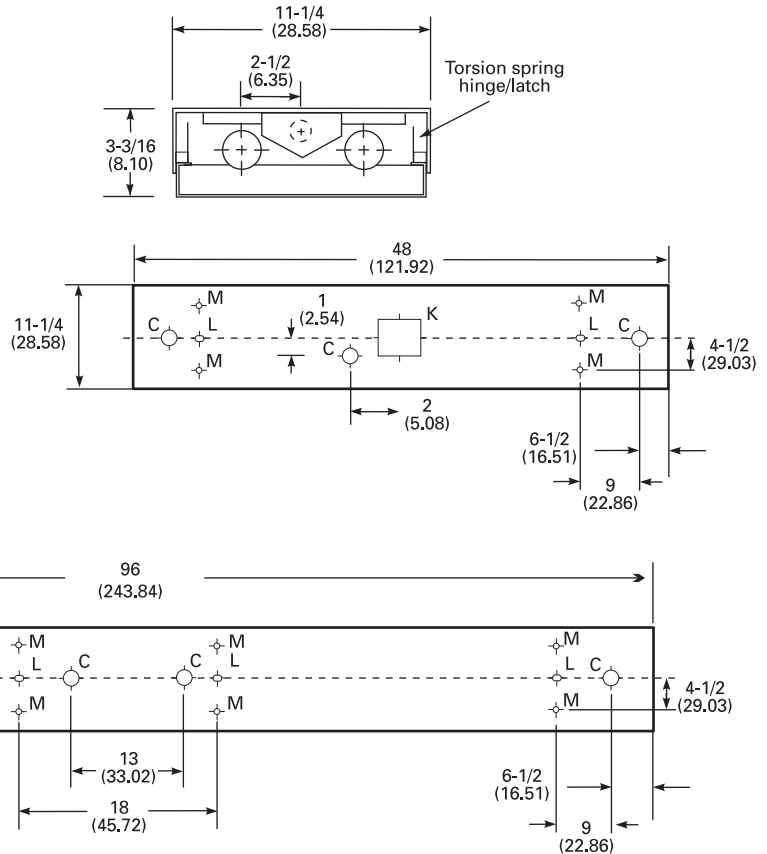
For unit or row installation. Surface or stem mounting.
Two hanging devices per fixture required.



B = 1/4 x 1/2 (.635 x 1.27) K.O.
C = 7/8 (2.22) Dia.K.O.
K = 2 x 2-1/2 (5.1 x 6.37)
Square K.O.
L = 3/8 x 1/2 (.95 x 1.27) slot
M = 3/8 (.95) Dia. hole

DIMENSIONS

Inches (centimeters). Subject to change without notice.



PHOTOMETRICS

Calculated using the zonal cavity method in accordance with IESNA LM41 procedures. Floor reflectances are 20%. Lamp configurations shown are typical. Full photometric data on these and other configurations available upon request.

AW 2 32

Report LTL 6569— Lumens per lamp = 2900

S/MH (along) 1.3 (across) 1.5

Coefficient of Utilization

Ceiling Wall	80%			70%			50%			0%		
	70%	50%	30%	70%	50%	30%	50%	30%	10%	0%	0%	
0	84	84	84	82	82	82	78	78	78	69		
1	77	74	71	75	72	69	69	66	64	58		
2	71	65	60	68	63	59	60	57	54	49		
3	65	57	52	63	56	51	54	49	46	42		
4	59	51	45	57	50	44	48	43	39	36		
5	55	46	39	53	45	39	43	38	34	31		
6	50	41	35	49	40	35	39	34	30	27		
7	47	37	31	45	37	31	35	30	26	24		
8	44	34	28	42	34	28	32	27	24	22		
9	41	31	26	40	31	25	30	25	21	20		
10	38	29	23	37	28	23	28	23	19	18		

Zonal Lumens Summary

Zone	Lumens	%Lamp	%Fixture
0-30	1149	19.8	27.8
0-40	1934	33.4	46.9
0-60	3313	57.1	80.2
0-90	3987	68.8	96.6
90-180	142	2.5	3.4
0-180	4129	71.2	100.0

AW 2 40

Report LTL 6567— Lumens per lamp = 3150

S/MH (along) 1.3 (across) 1.4

Coefficient of Utilization

Ceiling Wall	80%			70%			50%			0%		
	70%	50%	30%	70%	50%	30%	50%	30%	10%	0%		
0	79	79	79	77	77	77	73	73	73	64		
1	72	69	67	70	68	65	64	62	60	54		
2	66	61	57	64	59	55	57	53	51	46		
3	61	54	49	59	53	48	50	46	43	39		
4	56	48	42	54	47	42	45	40	37	34		
5	51	43	37	50	42	37	40	36	32	29		
6	47	39	33	46	38	33	37	32	28	26		
7	44	35	29	43	35	29	33	28	25	23		
8	41	32	27	40	32	26	30	26	22	20		
9	38	29	24	37	29	24	28	23	20	18		
10	36	27	22	35	27	22	26	21	18	17		

Zonal Lumens Summary

Zone	Lumens	%Lamp	%Fixture
0-30	1184	18.8	28.1
0-40	1979	31.4	47.0
0-60	3374	53.6	80.1
0-90	4061	64.5	96.4
90-180	149	2.4	3.6
0-180	4211	66.9	100.0



An AcuityBrands Company