



FEATURES & SPECIFICATIONS

CONSTRUCTION

Flat-bottom acrylic prismatic diffuser with sonic-welded, injection-molded, luminous ends.

Diffuser hinges open from either side for easy maintenance.

Available in tandem-wired lengths.

Optional high-impact-resistant diffuser available—stronger than standard acrylic. **Certain airborne contaminants can diminish integrity of acrylic.** [Click here for Acrylic Environmental Compatibility table for suitable uses.](#)

Metal parts die-formed from code-gauge steel. Diffuser is 100% acrylic. No asbestos is used in this product.

FINISH

Five-stage, iron-phosphate pretreatment ensures superior paint adhesion and rust resistance. High-gloss, baked white enamel finish. All parts painted after fabrication.

BALLAST

Thermally protected, resetting, Class P, HPF, non-PCB, UL listed, CSA-certified ballast is standard. Ballasts are sound rated A. Standard combinations are CBM approved and conform to UL 935.

ELECTRICAL SYSTEM

Fixture conforms to UL 1570 and is suitable for damp locations. AWM, TFN or THHN wire used throughout. Rated for required temperatures. All ballast leads extend a minimum of 6" through access plate.

LISTING

UL listed and labeled. Listed and labeled to comply with Canadian and Mexican Standards (see Options).

WARRANTY

Guaranteed for one year against mechanical defects in manufacture.

Specifications subject to change without notice.

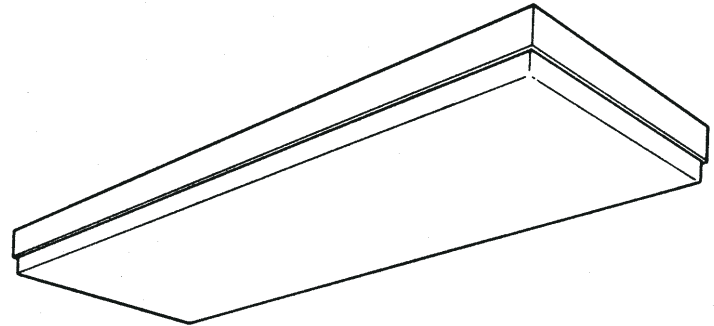
Catalog Number	
Notes	Type

Architectural Wraparound

AW

WIDE BODY

4' and 8' length
2, 3 or 4 lamps



ORDERING INFORMATION

Example: **AW 4 32 AR MVOLT GEB10IS**

Series	Number of lamps	Lamp type	Diffuser	Voltage	Options
AW 3-lamp or 4-lamp, 16-3/4" wide	2	32 32W T8 (48")	(blank) Prismatic acrylic	120	GEB10IS Electronic ballast, ≤10% THD
	3	28T5 28W T5 (48") ¹	AR High-impact prismatic acrylic (50% DR)	277	GEB10PS Electronic ballast, ≤ 10% THD, program start
2AW 2-lamp, 16-3/4" wide	4	54T5HO 54W T5HO (48")		347	EL Emergency battery pack (nominal 300 lumens; see Life Safety section)
	Not included.			MVOLT Others available.	GLR Internal fast-blow fuse ²
					GMF Internal slow-blow fuse ²
					RIF1 Radio interference filter (1 per fixture)
					CSA Listed and labeled to comply with Canadian Standards
					NOM NOM Certified

For tandem double length unit, add prefix **T**.
Example: **TAW**

Accessories

Order as separate catalog number.

- SQ** Swivel stem hanger (specify length in 2" increments). Not applicable with 3-light.
- 1B** Ceiling spacer (1-1/2" to 2-1/2" from ceiling).

Notes

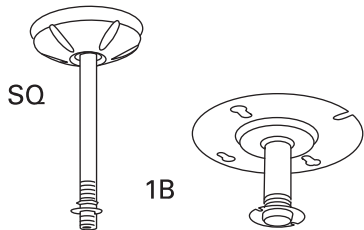
- 1 28T5 and 54T5HO wattages require GEB10PS ballast.
- 2 Must specify voltage.

AW Architectural Wraparound, Wide Body

MOUNTING DATA

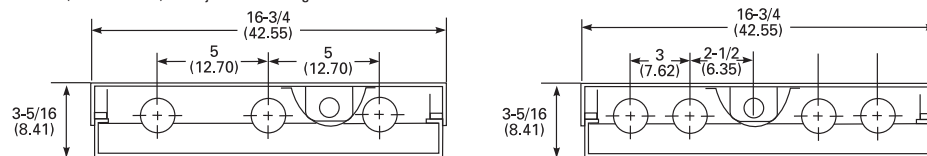
For unit or row installation. Surface or stem mounting.
Two hanging devices per fixture required for two- and four-lamp configurations.

Four hanging devices per fixture required for three-lamp configurations.

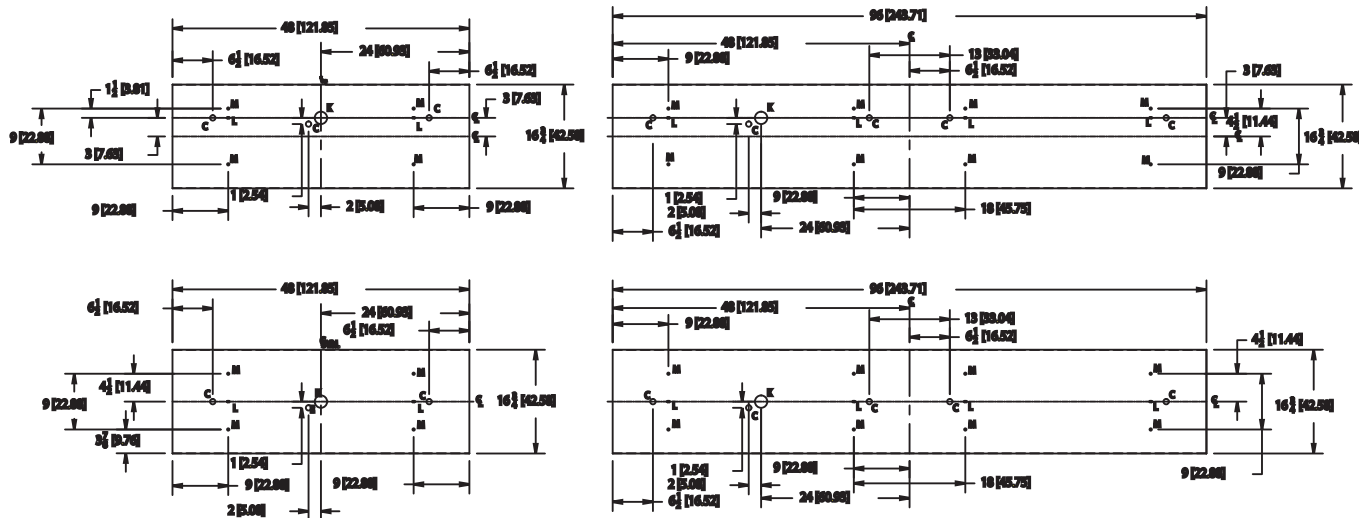


DIMENSIONS

Inches (centimeters). Subject to change without notice.



C = 7/8 (2.22) Dia. K.O.
K = 2 (5.1) K.O.
L = 3/8 x 1/2 (.95 x 1.27) slot
M = 3/8 (.95) Dia. hole



PHOTOMETRICS

Calculated using the zonal cavity method in accordance with IESNA LM41 procedures. Floor reflectances are 20%. Lamp configurations shown are typical. Full photometric data on these and other configurations available upon request.

AW 3 32

Report LTL 6019— Lumens per lamp = 2900

S/MH (along) 1.3 (across) 1.4

Coefficient of Utilization

Ceiling Wall	80%			70%			50%			0%		
	70%	50%	30%	70%	50%	30%	50%	30%	10%	0%	0%	
0	90	90	90	88	88	88	83	83	83	73		
1	83	79	76	80	77	74	73	71	69	62		
2	76	70	65	74	68	64	65	61	58	53		
3	70	62	56	68	61	56	58	54	50	46		
4	64	56	49	62	54	48	52	47	43	40		
5	59	49	43	57	48	42	46	41	37	34		
6	54	44	38	52	43	37	42	36	32	30		
7	50	40	33	48	39	33	38	32	28	26		
8	46	36	29	44	35	29	34	28	24	22		
9	42	32	26	41	31	25	30	25	21	19		
10	39	29	23	38	28	23	27	22	18	16		

AW 4 32

Report LTL 6018— Lumens per lamp = 2900

S/MH (along) 1.2 (across) 1.4

Coefficient of Utilization

Ceiling Wall	80%			70%			50%			0%		
	70%	50%	30%	70%	50%	30%	50%	30%	10%	0%	0%	
0	88	88	88	86	86	86	81	81	81	72		
1	81	78	75	79	76	73	72	70	68	61		
2	75	69	64	72	67	63	64	60	57	52		
3	69	61	56	67	60	55	57	53	49	45		
4	63	55	49	61	54	48	51	46	43	39		
5	58	49	42	56	48	42	46	41	37	34		
6	53	44	37	52	43	37	41	36	32	29		
7	49	39	33	48	39	32	37	32	28	25		
8	45	35	29	44	35	29	33	28	24	22		
9	42	31	25	40	31	25	30	24	21	19		
10	39	29	23	37	28	22	27	22	18	16		

Zonal Lumens Summary

Zone	Lumens	%Lamp	%Fixture
0-30	1758	20.2	26.5
0-40	2952	33.9	44.5
0-60	5181	59.5	78.0
0-90	6361	73.1	95.8
90-180	278	3.2	4.2
0-180	6639	76.3	100.0

Zonal Lumens Summary

Zone	Lumens	%Lamp	%Fixture
0-30	2343	20.2	27.0
0-40	3930	33.9	45.3
0-60	6824	58.8	78.6
0-90	8325	71.8	95.9
90-180	355	3.1	4.1
0-180	8680	74.8	100.0

