



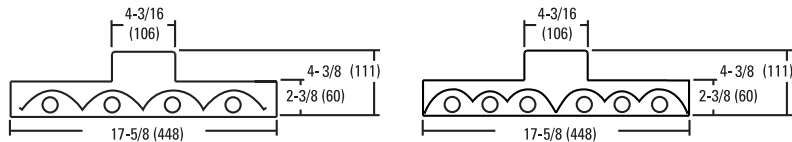
# I-BEAM Fluorescent High Bay, T8

## DIMENSIONS

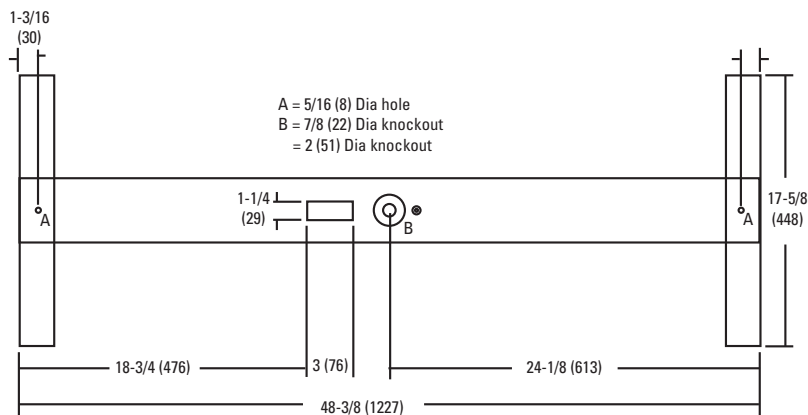
Inches (millimeters). Subject to change without notice.

### Cord Set Option:

Add suffix to end of catalog number, specify voltage.  
All cord sets are 6', black unless otherwise noted.  
Other configurations available, consult factory.



Suffix	Description
CS1	Straight plug, 120V
CS3	Twist lock, 120V
CS7	Straight plug, 277V
CS11	Twist-lock, 277V
CS25	Twist-lock, 347V
CS97	Twist-lock, 480V
CS93	600V SO white cord, no plug



## PHOTOMETRICS

Calculated using the zonal cavity method in accordance with IESNA LM41 procedure. Floor reflectances are 20%. Lamp configurations shown are typical. All data based on 25°C. Full photometric data on these and other configurations available upon request.

### IB 632 NDS

Report: LTL14071  
LUMENS PER LAMP 2950

RCR	Coefficients of Utilization											
	pf	20%			30%			50%				
		pc	80%	50%	30%	10%	50%	30%	10%	50%	30%	10%
0	110	110	110	103	103	103	98	98	98			
1	100	96	92	90	87	84	86	84	82			
2	91	84	77	79	74	70	76	72	68			
3	83	74	66	69	63	59	67	62	57			
4	76	65	57	62	55	50	60	54	49			
5	70	59	50	56	49	44	54	48	43			
6	65	53	45	50	43	38	49	43	38			
7	60	48	40	46	39	34	45	38	34			
8	56	44	36	42	35	31	41	35	30			
9	53	40	33	39	32	28	38	32	27			
10	50	37	30	36	30	25	35	29	25			

### IB 632

Report: LTL14068  
LUMENS PER LAMP 2950

RCR	Coefficients of Utilization											
	pf	20%			30%			50%				
		pc	80%	50%	30%	10%	50%	30%	10%	50%	30%	10%
0	109	109	109	100	100	100	95	95	95			
1	100	95	91	88	85	82	83	81	79			
2	91	83	77	77	72	68	73	69	66			
3	83	73	66	68	62	57	64	60	55			
4	76	65	57	60	54	49	58	52	48			
5	70	58	50	54	48	42	52	46	41			
6	65	52	44	49	42	37	47	41	37			
7	60	48	40	45	38	33	43	37	33			
8	56	44	36	41	34	30	39	34	29			
9	52	40	33	38	31	27	36	31	26			
10	49	37	30	35	29	24	34	28	24			

### IB 632 WDS

Report: LTL14070  
LUMENS PER LAMP 2950

RCR	Coefficients of Utilization											
	pf	20%			30%			50%				
		pc	80%	50%	30%	10%	50%	30%	10%	50%	30%	10%
0	105	105	105	98	98	98	93	93	93			
1	95	90	86	85	81	79	81	79	76			
2	86	78	72	73	68	64	70	66	62			
3	78	68	60	64	58	53	61	56	52			
4	71	60	52	56	50	45	54	49	44			
5	65	53	45	50	43	38	48	42	38			
6	60	48	40	45	38	33	44	38	33			
7	55	43	35	41	34	29	40	34	29			
8	52	39	32	37	31	26	36	30	26			
9	48	36	29	34	28	23	33	27	23			
10	45	33	26	32	25	21	31	25	21			

Zonal Lumen Summary			
Zone	Lumens	% Lamp	% Fixture
0° - 30°	4784	27.0	29.3
0° - 40°	7632	43.1	46.7
0° - 60°	12831	72.5	78.5
0° - 90°	16343	92.3	100.0
90° - 180°	0	0.0	0.0
0° - 180°	16343	92.3	100.0

Zonal Lumen Summary			
Zone	Lumens	% Lamp	% Fixture
0° - 30°	4533	25.6	27.6
0° - 40°	7226	40.8	44.0
0° - 60°	12174	68.8	74.2
0° - 90°	15480	87.5	94.3
90° - 180°	928	5.2	5.7
0° - 180°	16409	92.7	100.0

Zonal Lumen Summary			
Zone	Lumens	% Lamp	% Fixture
0° - 30°	3802	21.5	24.5
0° - 40°	6320	35.7	40.7
0° - 60°	11620	65.7	74.7
0° - 90°	15546	87.8	100.0
90° - 180°	0	0.0	0.0
0° - 180°	15546	87.8	100.0



An Acuity Brands Company