

FEATURES

OPTICAL SYSTEM

- Baffle with white painted minimum flange.

MECHANICAL SYSTEM

- 16-gauge galvanized steel mounting/plaster frame. Adjustable yoke and tempered steel flat spring utilized to retain optical system. Accommodates up to 1-5/8" thick ceiling with no modifications.
- 16-gauge galvanized steel mounting bars provide continuous vertical and horizontal adjustment and are held in place with tool-less, cam-action, locking brackets. Post installation adjustment possible from above or below ceiling. Shipped pre-installed.
- 16-gauge galvanized steel junction box with hinged access covers. Two combination 1/2"-3/4" and four 1/2" knockouts for straight-through conduit runs. Capacity: 8 (4 in, 4 out) No. 12 AWG conductors rated for 90°C.

ELECTRICAL SYSTEM

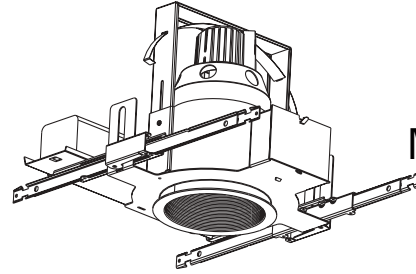
- Die-cast aluminum lampholder housing.
- Medium base porcelain socket with nickel-plated screw shell.
- Pre-wired, encased-and-potted, 120/277V or 120/347V ballast tray module. Module can be attached before or after installation of mounting/plaster frame.
- Thermally-activated insulation detector.

LISTING

- Fixtures are UL Listed for thru-branch wiring, non-IC recessed mounting and damp locations. Listed and labeled to comply with Canadian Standards.

Type Catalog number

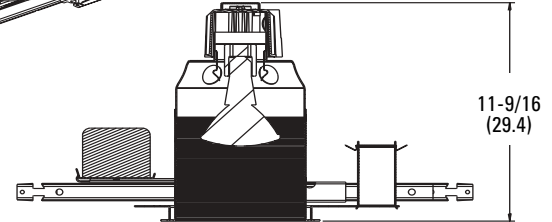
.....



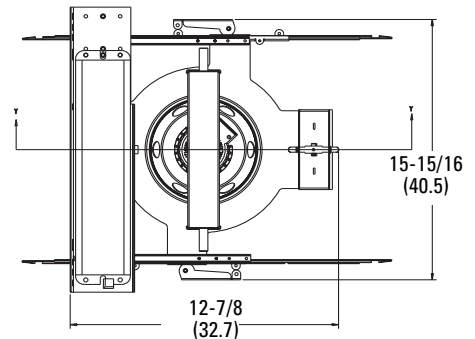
HID Downlights

6" APRH

Microgroove Baffle
 PAR30 or PAR38



Aperture: 6-1/4 (15.9)
 Ceiling opening: 6-7/8 (17.5)
 Overlap trim: 7-1/2 (19.1)



All dimensions are inches (centimeters).

ORDERING INFORMATION

Example: **APRH P3070MHC 6MB 120**

Choose the boldface catalog nomenclature that best suits your needs and write it on the appropriate line. Order accessories as separate catalog numbers (shipped separately).

APRH

Series	Lamp designation	Aperture/Trim Color	Voltage	Ballast	Options
APRH	<i>Metal Halide</i>	6MB Black Baffle 6WB White Baffle	120 277 347	(blank) Electromagnetic ballast HEB¹ Electronic ballast	LRC² Provides compatibility with Lithonia Reloc® System. Lithonia Reloc System can be installed less this option with connectors provided by others. Access above ceiling required. SF Single Fuse. CP Chicago Plenum. LPFL Flood lamp (shipped separately). LPSP Spot lamp (shipped separately). GSKT Foam gasketing.
	<i>Ceramic Metal Halide</i>	P3039MHC 39W PAR30 P3070MHC 70W PAR30 P3870MHC 70W PAR38 P38100MHC 100W PAR38 P38150MHC 150W PAR38			

NOTES

- Available in 120V or 277V only.
- For compatible Reloc systems, refer to Technical Bulletins tab.

Accessories

- SC6** Sloped Ceiling adaptor. Degree of slope must be specified (10D, 15D, 20D, 25D, 30D). EX: SC6 **10D**.

6" APRH Microgroove Baffle

Distribution curve Distribution data Output data Coefficient of utilization Single luminaire data 30" above floor

APRH 6MB, 100W MP100PAR38/U/SP20 lamp, 0.4 spacing criteria, 5200 rated lumens, test no. ltl2193062201

Distribution Curve	Distribution data		Output data		Coefficient of utilization						Single luminaire data 30" above floor							
	cp	Lumens	Zone	Lumens % Lamp	pf	20%					50% beam - 23.1° 10% beam - 40.9°							
					pc	80%	70%	50%										
	0°	19204	0° - 30°	3763 72.4														
	5°	18092	0° - 40°	3825 73.6														
	15°	5486	0° - 60°	3825 73.6														
	25°	1188	0° - 90°	3825 73.6														
	35°	18	90° - 180°	0 0.0														
	45°	0	0° - 180°	3825 *73.6														
	55°		*Total Efficiency															
	65°																	
	75°																	
	85°																	
	90°																	

APRH 6MB, 100W MP100PAR38/U/FL35 lamp, 0.6 spacing criteria, 5500 rated lumens, test no. ltl2193062202

Distribution Curve	Distribution data		Output data		Coefficient of utilization						Single luminaire data 30" above floor							
	cp	Lumens	Zone	Lumens % Lamp	pf	20%					50% beam - 30.8° 10% beam - 47.6°							
					pc	80%	70%	50%										
	0°	12816	0° - 30°	3765 68.4														
	5°	12538	0° - 40°	3799 69.1														
	15°	7498	0° - 60°	3799 69.1														
	25°	1267	0° - 90°	3799 69.1														
	35°	11	90° - 180°	0 0.0														
	45°	0	0° - 180°	3799 *69.1														
	55°		*Total Efficiency															
	65°																	
	75°																	
	85°																	
	90°																	

APRH 6MB, 100W MP100PAR38/U/VWFL 65 lamp, 0.7 spacing criteria, 5600 rated lumens, test no. ltl2193062203

Distribution Curve	Distribution data		Output data		Coefficient of utilization						Single luminaire data 30" above floor							
	cp	Lumens	Zone	Lumens % Lamp	pf	20%					50% beam - 39.0° 10% beam - 68.1°							
					pc	80%	70%	50%										
	0°	4869	0° - 30°	2370 42.3														
	5°	4530	0° - 40°	2810 50.2														
	15°	3421	0° - 60°	2818 50.3														
	25°	2258	0° - 90°	2818 50.3														
	35°	711	90° - 180°	0 0.0														
	45°	0	0° - 180°	2818 *50.3														
	55°		*Total Efficiency															
	65°																	
	75°																	
	85°																	
	90°																	

NOTES

- 1 For electrical characteristics refer to the Technical Bulletins tab.
- 2 Tested to current IES and NEMA standards under stabilized laboratory conditions. Various operating factors can cause differences between laboratory data and actual field measurements. Dimensions and specifications are based on the most current available data and are subject to change without notice.

DHID-667

©2004 Gotham 12/04
DHID-667.p65

gotham
An Acuity Brands Company

GOTHAM ARCHITECTURAL DOWNLIGHTING
A DIVISION OF ACUITY LIGHTING GROUP, INC.
1400 Lester Road Conyers Georgia 30012
P 800 315 4982 F 770 860 3129
www.gothamlighting.com