

# FEATURES

## OPTICAL SYSTEM

- Reflector- Self-flanged, specular or semi-diffuse reflector. Bounding Ray™ Optical Principle design provides lamp before lamp image and smooth transition from top of reflector to bottom.
- Patent-pending integrated snoot and optical system minimizes lamp striations normally associated with PAR lamps and creates visually pleasing scallops on vertical surfaces.

## MECHANICAL SYSTEM

- 16-gauge galvanized steel mounting/plaster frame. Adjustable yoke and tempered steel flat spring utilized to retain optical system. Accommodates up to 1-5/8" thick ceiling with no modifications.
- 16-gauge galvanized steel mounting bars provide continuous vertical and horizontal adjustment and are held in place with tool-less, cam-action, locking brackets. Post installation adjustment possible from above or below the ceiling. Shipped pre-installed.
- 16-gauge galvanized steel junction box with hinged access covers. Two combination 1/2-3/4" and four 1/2" knockouts for straight-through conduit runs. Capacity: 8 (4 in, 4 out) No. 12 AWG conductors rated for 90°C.

## ELECTRICAL SYSTEM

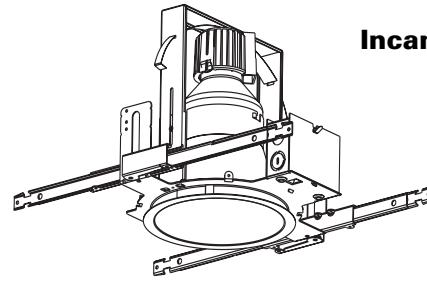
- Die-cast aluminum lampholder housing.
- Medium base porcelain socket with nickel-plated screw shell.
- Thermally-activated insulation detector.

## LISTING

- Fixtures are UL Listed for thru-branch wiring, non-IC recessed mounting and damp locations. Listed and labeled to comply with Canadian Standards.

Type Catalog number

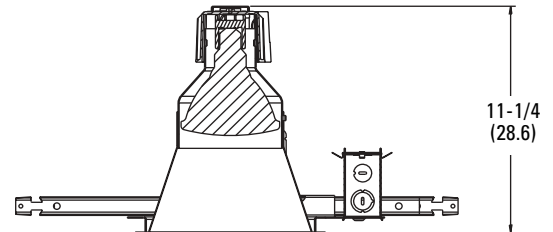
.....  
 .....



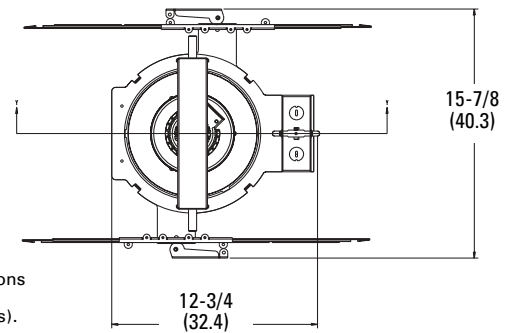
**Incandescent Downlights**

**8" APR**

**Open Reflector  
PAR38**



Aperture: 7-7/8 (20.0)  
 Ceiling Opening: 8-1/2 (21.6)  
 Overlap Trim: 9-1/4 (23.5)



All dimensions are inches (centimeters).

# ORDERING INFORMATION

Example: **APR PAR38 8AR**

Choose the boldface catalog nomenclature that best suits your needs and write it on the appropriate line. Order accessories as separate catalog numbers (shipped separately).

APR		PAR38							
Series	Lamp designation			Aperture/Trim color		Finish		Options	
<b>APR</b>	<b>PAR38</b>	PAR38	(250W max.)	<b>8AR</b>	Clear	(blank)	Specular	<b>TRW</b>	White painted flange.
				<b>8BR</b>	Black		<b>LD</b>	<b>LRC'</b>	Provides compatibility with Lithonia Reloc® System. Lithonia Reloc System can be installed less this option with connectors provided by others. Access above ceiling required.
				<b>8PR</b>	Pewter			<b>CP</b>	Chicago Plenum.
				<b>8WTR</b>	Wheat			<b>SDT</b>	277V to 120V stepdown transformer.
				<b>8UBR</b>	Umber			<b>SDT347</b>	347V to 120V stepdown transformer (75W max.).
				<b>8GR</b>	Gold			<b>GSKT</b>	Foam gasketing.
				<b>8CR</b>	Champagne gold				

### Accessories

- SC8** Sloped Ceiling adaptor. Degree of slope must be specified (10D, 15D, 20D, 25D, 30D). Ex: SC8 **10D**.

NOTE

1 For compatible Reloc systems, refer to Technical Bulletins tab.

# 8" APR Open Reflector

Distribution curve	Distribution data	Output data	Coefficient of utilization	Single luminaire data 30" above floor															
<b>APR 8AR, 90W PAR38/SP-12° lamp, 0.2 spacing criteria, 1470 rated lumens, test no. ltl12909</b>																			
	cp	Lumens	Zone	Lumens % Lamp	pf	20%				50% beam - 10.7' 10% beam - 23.0'									
						pc	80%	70%	50%	Initial FC									
						pw	50%	30%	50%	30%	50%	30%	Mounting Center						
							0	98	98	96	96	91	91	Height	Beam	Diameter	FC	Diameter	FC
							1	94	92	92	91	89	88	8	655.1	1.0	327.7	2.2	65.4
							2	90	88	89	87	86	85	10	352.3	1.4	176.2	3.1	35.2
							3	87	85	86	84	84	83	12	219.6	1.8	109.8	3.9	21.9
							4	85	82	84	82	82	80	14	149.9	2.2	74.9	4.7	15.0
							5	83	80	82	80	81	79	16	108.7	2.5	54.4	5.5	10.9
							6	81	78	80	78	79	77						
							7	79	77	79	76	78	76						
							8	78	75	77	75	77	75						
							9	76	74	76	74	76	73						
							10	75	73	75	73	74	72						

Distribution curve	Distribution data	Output data	Coefficient of utilization	Single luminaire data 30" above floor															
<b>APR 8AR, 250W K250PAR/FL lamp, 0.4 spacing criteria, 3100 rated lumens, test no. ltl12856</b>																			
	cp	Lumens	Zone	Lumens % Lamp	pf	20%				50% beam - 22.9' 10% beam - 47.3'									
						pc	80%	70%	50%	Initial FC									
						pw	50%	30%	50%	30%	50%	30%	Mounting Center						
							0	97	97	95	95	91	91	Height	Beam	Diameter	FC	Diameter	FC
							1	92	91	90	89	87	86	8	349.9	2.2	174.9	4.8	35.0
							2	88	85	86	84	84	82	10	188.2	3.0	94.1	6.6	18.8
							3	84	81	83	80	81	79	12	117.3	3.8	58.6	8.3	11.7
							4	81	77	80	77	78	76	14	80.0	4.7	40.0	10.1	8.0
							5	78	74	77	74	75	73	16	58.1	5.5	29.0	11.8	5.8
							6	75	71	74	71	73	70						
							7	72	69	72	68	71	68						
							8	70	66	69	66	69	66						
							9	68	64	67	64	67	64						
							10	66	62	65	62	65	62						

NOTE  
 Tested to current IES and NEMA standards under stabilized laboratory conditions. Various operating factors can cause differences between laboratory data and actual field measurements. Dimensions and specifications are based on the most current available data and are subject to change without notice.