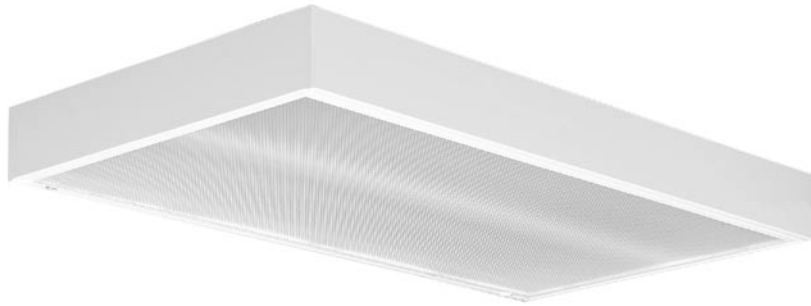




Catalog Number:

Type:

FSM
T8, CF



Surface Mount

Specifications

Reflectors - Precision formed, high performance, 95% total reflectance, segmented optics utilizing Alanod MIRO® 4 specular aluminum warranted for 25 years. White reflectors have 93+% total reflectance and are finished with an in-house polyester powder coating system. Reflector optics are available in a wide variety of photometric distributions and spacing criteria.

- Optional heavy gauge reflector material is available for more demanding applications.
- Custom designed reflectors for any specific application, which can increase efficiency or provide desired cutoff for comfort or lighting effect.

Construction - Body, covers and socket brackets are manufactured from 22-gauge cold rolled steel. Welded corners with riveted and screwed assembly.

- Optional all aluminum construction, specify AL and PAF.
- Custom heavy gauge steel body.

Finish - Standard high gloss white baked enamel, pretreated with a 5-stage iron phosphate system.

- Optional premium polyester powder coat finish, utilizing a 7-stage pretreatment process of iron phosphate, a non-chromium sealer and a de-ionized water rinse to provide superior adhesion and corrosion resistance. Specify PAF (powder coat after fabrication). Required for aluminum construction.
- Custom powder coat colors and textures are available by supplying the RAL number or by supplying a finish sample you wish to match.

Ballasts - All standard ballasts are electronic, energy saving, thermally protected, Class-P, HPF, non-PCB, Sound Rated A, UL/CSA certified where applicable and comply with Ⓢ Federal Ballast Law (Public Law 100-357, 1988). Default ballast configuration is for two-lamp ballasts except for 1-lamp fixture.

Electrical - UL listed wire, rated for required temperatures, used throughout. Lamps are secured with rotary locking lamp sockets for ease of relamping and to reduce lamps disconnecting due to vibration or incidental contact. Luminaire is bi-national listed (UL 1598 and CSA C22.2 No. 250.0-00) and is suitable for damp locations.

Mounting - The luminaire is designed for surface or stem mounting.

- Custom mounting options are available.

Lamps - Factory installed lamps are available in various CRI ratings, temperature colors and rated life.

Warranty - Standard 1-year warranty for the fixture. Ballasts carry manufacturer warranties of 3-5 years, depending on the application.

Custom Requirements - Consult with your Speclight Agent to develop custom solutions for any application.

Fixture Series

FSM22	2' x 2'
FSM24	2' x 4'

Lamp Configuration

2	2-lamp profile
3	3-lamp profile
4	4-lamp profile
5	5-lamp profile
6	6-lamp profile

Lamp Type/Wattage

17	** F17T8
32	*** F32T8
CF40	** FT40
CF55	** FT55

Photometric Distribution

(blank)	No Reflector
N1	Normal Beam
S1	Spread Beam

Reflector

(blank)	No Reflector
X12	MIRO® 4, 0.012"
X20	MIRO® 4, 0.020"
D20	* White Powder Coat, 0.020"

Lamp Shielding

84	Holophane® #8224
A12	Pattern 12 Acrylic, 0.110"
A12125	Pattern 12 Acrylic, 0.125"
PCL125	Clear Polycarbonate, 0.125"

Voltage

120	120V, 60 Hz
277	277V, 60 Hz
MVOLT	120V - 277V, 60 Hz
347	347V, 60 Hz

Ballast Configuration

(blank)	all 2-lamp ballast
1/3	(1) 3-lamp ballast
1/4	(1) 4-lamp ballast
2/1	(2) 1-lamp ballast

Ballast Type

GEB	Normal BF, ≤20% THD, IS
GEBH	High BF, ≤20% THD, IS
GEBL	Low BF, ≤20% THD, IS

Finish

PAF	Powder Coat After Fabrication
------------	-------------------------------

Options

AL	Aluminum Construction, PAF
-----------	----------------------------

* Available only with a Normal Beam distribution.
** Available with 2'x2' fixture only. Maximum of (4) CF55s.
*** Available with 2'x4' fixture only.



Applications

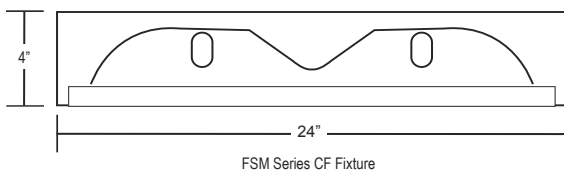
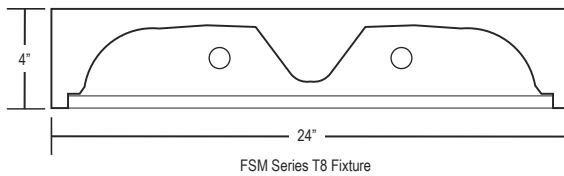
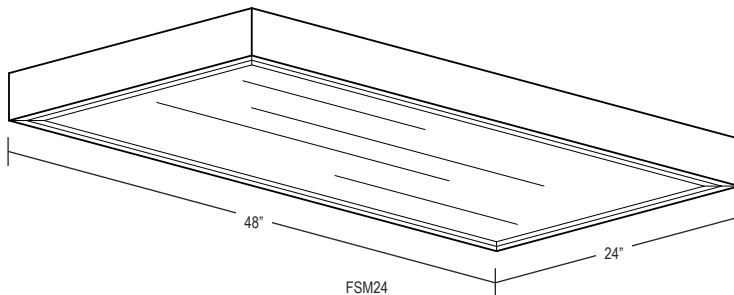
SpecLight's FSM surface mount fixture is designed to provide high efficiency general lighting for virtually any type of interior. Typical placements include gymnasiums, multi-purpose rooms, classrooms or canopies.

Features

Rigid luminaire housing for use in demanding environments

- Specular reflectors control photometric distribution and increase efficiency.
- Flush steel door frames hold a variety of optional lenses, louvers or wire guards.
- Opposing cam latches and T-hinges secure door to housing.
- Standard powder coat after fabrication.

Dimensions



Additional Options (installed on fixture)

- Battery pack
- Factory Installed Lamps
- Whips

Accessories (order separately)

- Safety Chain, 24"
- Double-stem Hangers, 24"
- Swivel-stem Hangers

SCKFV
DSH24
STBE

Photometrics

SC Across Definitions:

- Focus ($SC < 0.9$), i.e. F1X12
- Task ($0.9 \leq SC < 1.2$), i.e. T1X12
- Normal ($1.2 \leq SC \leq 1.4$), i.e. N1X12, N1D20
- Spread ($1.4 < SC \leq 1.8$), i.e. S1X12
- Broad ($1.8 < SC$), i.e. B1X12

Consult Factory For Photometrics