

# INSTALLATION & MAINTENANCE INSTRUCTIONS

## 115 & 315 SERIES HORIZONTAL LUMINAIRES

### (FOUR BOLT LOCKING AND LEVELING)

#### **WARNING**

**DISCONNECT POWER BEFORE RELAMPING OR WIRING THE FIXTURE.  
READ ALL INSTRUCTIONS COMPLETELY BEFORE STARTING INSTALLATION**

#### **WARNING**

**RISK OF FIRE. PRODUCT FOR OUTDOOR INSTALLATION AND USE ONLY.**

#### **CAUTION**

**TO AVOID THE RISK OF FIRE OR SHOCK, FIXTURE MUST BE INSTALLED IN COMPLIANCE WITH ALL APPLICABLE NATIONAL AND LOCAL ELECTRICAL/BUILDING CODES. FOR CODE INTERPRETATION, CONSULT LOCAL CODE AUTHORITY**

#### REMOVE LOWER HOUSING:

##### **FIXTURES WITH ONE-PIECE LOWER:**

Lift lower housing hinge pins out of the hinges in the upper housing.  
Slide lower housing off of hinge bar.

##### **FIXTURES WITH POWER-PAD:**

Unfasten the power-pad latch screw. NOTE: The power-pad is HEAVY, and it should not be allowed to drop free and swing.  
Disconnect the two sets of electrical connectors, and then unhook the power-pad from the hinge bar and remove it.

#### **CAUTION**

**OVER-TORQUING OF FITTER CLAMP BOLTS CAN  
CREATE CRACKS IN THE HOUSING CAUSING  
THE FIXTURE TO FALL TO THE GROUND.**

#### MOUNTING / LEVELING:

##### **FOUR BOLT FITTER:**

**1-1/4" MAST ARM** - Loosen the four fitter clamp bolts until the fitter will slip over the mast arm.

**2" MAST ARM** - Loosen the four fitter clamp bolts. Remove the plastic bird shield and break out the pierced section to allow it to fit into the 2" mast arm. Replace the bird shield. Slide the luminaire onto the mast arm to the stop and tighten the fitter clamp bolts tight.

##### **LEVELING:**

Place a level on the area provided on top of the luminaire. If the luminaire is not level from side to side, twist the luminaire on the mast arm until it is level

##### **FOUR BOLT FITTER:**

Tighten all four bolts. If the FRONT END IS LOW, loosen the two front fitter bolts and tighten the two rear ones. Repeat this procedure until the luminaire is level.

If the FRONT END IS HIGH, loosen the two rear fitter bolts and tighten the two front ones. Repeat this procedure until the luminaire is level.

When the luminaire is level, tighten the fitter clamp bolts with a wrench to 10 ft.lbs for 2" MAST ARMS or 1/16" deflection, or 15 ft.lbs for 1-1/4" MAST ARMS or 1/16" deflection.

#### MOUNTING / LEVELING (cont.):

##### **CSA SPECIAL REQUIREMENTS:**

Slide the weather guard onto the mast arm first. Carefully fold back the insulating barrier along the score line to expose the fitter bolts. Install the fixture as directed in the standard mounting instructions. Once fixture has been installed, slide the weather guard along the mast arm until it is firmly seated against the rear of the luminaire housing. Apply RTV sealant between the weather guard and the housing creating a water-tight seal. Once wiring has been completed, fold the insulating barrier back into place.

#### **WARNING**

**ENSURE THAT ALL POWER IS  
DISCONNECTED PRIOR TO WIRING**

#### INPUT VOLTAGE:

If the voltage available is different from that shown on the terminal block, consult the wiring diagram for directions.

#### WIRING:

Feed the supply wires through the mast arm, dress them so they do not interfere with any components, and connect them to the proper terminals on the terminal block. Verify that supply voltage is correct as noted on the terminal block label. Refer to the wiring diagram and the data on the ballast for connection information and ratings.

#### INSTALLING LOWER HOUSING:

##### **FIXTURES WITH ONE-PIECE LOWER:**

Insert lower housing hinge pins into the hinge cradles of the upper housing. Swing the lower housing into position and press firmly upward until latch snaps into position. NOTE: IT IS NEVER NECESSARY OR ADVISABLE TO SLAM THE HOUSING CLOSED!

##### **FIXTURES WITH POWER-PAD:**

To install the ballast power-pad, engage the hinge hook with the hinge bar on the upper housing. Connect the two sets of electrical connectors firmly together. (These connectors are "polarized" so they will only fit together one way.) Swing the power-pad closed. Fasten the latch screw until it is firmly seated, but DO NOT OVERTIGHTEN IT.



An Acuity Brands Company

**LAMP INSTALLATION AND SERVICING:**

Open the door to the lamp compartment by pulling forward on the latch located at the front of the luminaire. Lower the door slowly and let it hang from its hinges. It should not be allowed to drop free and swing.

Install a lamp of the proper type and wattage.

To close the door swing it up into position and press firmly upward until latch snaps into position. **NOTE: IT IS NEVER NECESSARY OR ADVISABLE TO SLAM THE HOUSING CLOSED!**

**MAINTENANCE AND CLEANING:**

The optical assembly should be cleaned with a mild detergent and rinsed with clean water to maintain efficiency of the luminaire.

**REFRACTOR REPLACEMENT:**

Open the lower door. Rotate the refractor clip enough to allow the release of the refractor or the lens being careful to support the refractor at all times. The front end can easily be slipped out of the cast-in retainers. Remove refractor and clean or replace as desired.

**REFLECTOR REMOVAL:**

**FIXTURES WITH POWER-PAD:** Disconnect the electrical connector in the socket leads.

Remove the mounting screw in the top center of the reflector and slide the reflector forward and down off of the socket. Reverse this procedure to replace the reflector.

**SOCKET ADJUSTMENT:**

Refer to the chart in these instructions for the required socket positions. Remove the reflector. To adjust the horizontal position, remove the screw holding the socket bracket. Move the bracket forward or back to line up A, B, C, or D with the mounting hole for the desired position. Replace the screw and tighten it securely. The vertical position is factory set and is not field adjustable.

**REMOVAL OF REFRACTOR DOOR:**

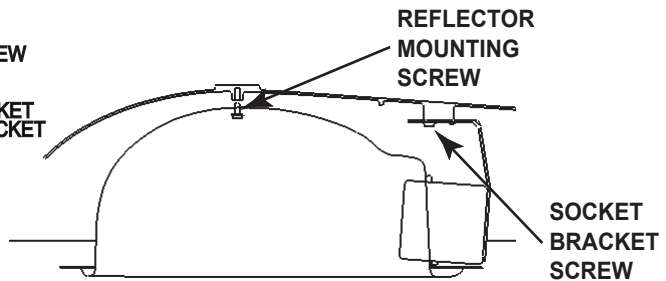
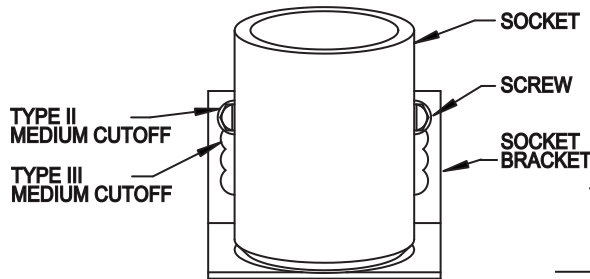
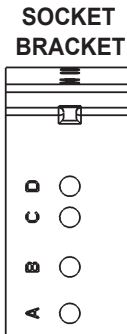
**FIXTURES WITH POWER PAD:** To remove the refractor door, the power-pad door must be opened first. It is not necessary to remove the power-pad door to remove the refractor door.

**OPTIONAL PHOTOCONTROL:**

Loosen the receptacle clamping screw. Rotate the receptacle so that the arrow on the top points North. Tighten the clamping screw. Plug the photocontrol into the receptacle and twist it clockwise until it locks into position

**SOCKET ADJUSTING OPTION (FOR AJ FLAT LENS)**

- A. LOOSEN SCREWS ON SOCKET BRACKET.
- B. MOVE BRACKET TO DESIRED POSITION.
- C. TIGHTEN SCREWS.



**\*NOTE: VERTICAL SOCKET SETTING IS SET AT THE FACTORY AND IS NOT FIELD ADJUSTABLE.**

**LIGHT DISTRIBUTION TABLE**

LENS	LIGHT SOURCE	PATTERN*	D	C	B	A
ACRYLIC (POLYCARBONATE)	50-150W CLEAR HPS	UP (1) DOWN (2)	---	---	---	II-S-SC III-M-SC
ACRYLIC (POLYCARBONATE)	100-250W CLEAR MERCURY METAL HALIDE	UP (1) DOWN (2)	---	---	---	II-S-SC III-M-SC
ACRYLIC	100-175W DELUXE MERCURY METAL HALIDE	UP (1) DOWN (2)	II-S-C II-S-SC	---	---	---
POLYCARBONATE	200-250W CLEAR HPS	UP (1) DOWN (2)	II-M-SC	---	---	III-M-SC
GLASS (PRISMATIC)	50-150W CLEAR HPS	UP (1) DOWN (2)	II-M-C	II-M-SC	II-S-C III-M-C	III-S-C III-M-SC
GLASS (PRISMATIC)	200-250W CLEAR HPS	UP (1) DOWN (2)	---	II-M-SC	III-M-SC	---
GLASS (PRISMATIC)	100-250W CLEAR MERCURY METAL HALIDE	UP (1) DOWN (2)	II-M-SC	---	---	III-S-SC
GLASS (FLAT)	50-150W HPS	UP (1) DOWN (2)	---	II-M-C	---	III-M-C **
GLASS (FLAT)	200-250W HPS	UP (1) DOWN (2)	---	---	---	II-S-C
GLASS II-2-4 WAY	50-150W HPS 100-250W CLEAR MERCURY	UP (1) DOWN (2)	II-4 WAY SC	---	---	---
GLASS II-2-4 WAY	200-250W HPS	UP (1) DOWN (2)	---	---	---	---

UNLESS SPECIFIED OTHERWISE, SOCKET SETTINGS AT THE FACTORY ARE ADJUSTED FOR CLEAR LAMPS.

S = Short M = Medium SC - Semi-Cutoff C = Cutoff NC = Non-Cutoff  
I = Type I II = Type II III = Type III

\*Vertical Socket Setting is pre-set at the factory and is not field adjustable.

\*\*Painted Reflector Only.