



NEW GQ/GQT

ellipsoidal

QUARTZ LUMINAIRES






AN INSPIRED PERFORMANCE OF LIGHT AND ARCHITECTURE



gotham®

GQ/GQT: A FAMILY OF SOLUTIONS

Gotham's GQ family includes fixed and tiltable luminaires to satisfy every need in auditoriums, theatres, churches, arenas and other similar spaces. This chart outlines the lamp wattages and beam distributions, with spacing-to-mounting height ratios for each.

		NARROW 	MEDIUM 	WIDE 
 FIXED DOWNLIGHTS	150 W	0.3	0.5	0.9
	250 W	0.3	0.6	0.9
	400 W	0.5	0.9	1.1
	500 W	0.4	0.8	1.1
 TILT DOWNLIGHTS	150 W	0.3	0.7	0.9
	250 W	0.4	0.7	0.8
	400 W	0.6	0.8	1.0
	500 W	0.5	0.7	0.8

TILT SPACING/MOUNTING HEIGHT SHOWN AT FULL 30 DEGREE TILT

Large, lofty spaces such as theatres, churches, auditoriums and arenas share a singular purpose: to enhance the experience of inspirational performances. With lighting vital to the visual effect, such environments present an array of challenges to design professionals. Effective, comfortable illumination must be delivered uniformly, over a broad area, using a combination of wattages and beam distributions to accommodate changing distances from floor to ceiling. “Instant-on” and dimming are necessary. Apertures must be minimal and discreet with carefully controlled brightness. In open ceiling structures, luminaire housings must disappear from view, with no visible distractions from stray light. And behind the lighting effect, thermal management is critical due to high operating temperatures and the proximity of ceiling materials.

Gotham’s quartz family of ellipsoidal downlights (GQ/GQT) exceeds all requirements with the most rigorous optical, mechanical and thermal designs ever implemented for these demanding lighting applications.

GQ/GQT: ADVANCED ENGINEERING FOR COMPLEX APPLICATIONS

Gotham's GQ ellipsoidal downlight family gives design professionals exactly what they need to accomplish optimal lighting for today's high-ceiling environments.

Quartz incandescent lamping within a hybrid ellipsoidal optical system delivers maximum illuminance from a quiet 6-inch aperture. A full range of T4 lamps includes 150, 250, 400 & 500 watts. For each wattage, the luminaires can be configured for narrow, medium or wide-beam distributions. All sources feature instant-on and full range dimming, allowing for comprehensive light level management.

GQ family's state-of-the-art optics achieve an optimum balance of high efficiency and visual comfort, eliminating flash below the 40° shield angle, providing an exceptionally quiet ceiling. Beam patterns are remarkably smooth, free of hot spots and striations.



When installed in a sloped ceiling, the GQT version incorporates Gotham's exclusive 0 - 30° tilt mechanism which articulates off-axis, optimally positioning the lamp relative to the aperture and upper cone opening, allowing continuous adjustment and lockable aim of the beam, with 360° rotation. GQT's asymmetric lower reflector is formed along two planes so the optics never get in the way of a clean beam, regardless of the degree of tilt. Both upper and lower apertures are round (versus elliptical), which optimizes efficiency, creates a visually clean appearance and allows optimal beam symmetry.

Importantly, both GQ and GQT luminaires can be suspended in acoustical panels which are common in open ceiling structures. A specially designed die cast aluminum housing manages heat so effectively that GQ products are suitable for installation in direct contact with non-fire resistant materials.

GQ/GQT: CONSIDERING THE DETAILS

As with all Gotham designs, particular attention has been given to the aesthetic quality of the installation. For example, when mounted in an open ceiling, GQ's unobtrusive black housing virtually disappears within the space above. All stray light is arrested, and unsightly topside light leaks are eliminated.

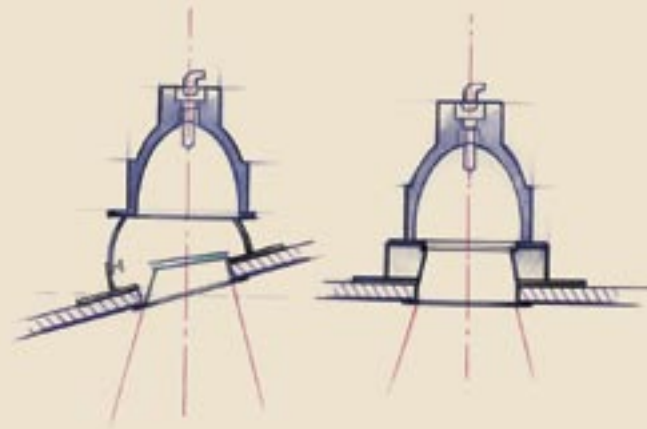
GQ and GQT luminaires appear the same from below, and the diminutive 6-inch apertures match other Gotham downlight apertures in a space for design continuity throughout.

Ease of installation and maintenance have also been scrutinized. A unique secondary housing adjustment facilitates precise ceiling-to-luminaire alignment. The GQT tilt mechanism is accessible and adjustable without tools. When necessary, all GQ family luminaires can be conveniently relamped from above or below. All components are captive, preventing the dropping of any element from lifts, ladders or catwalks.

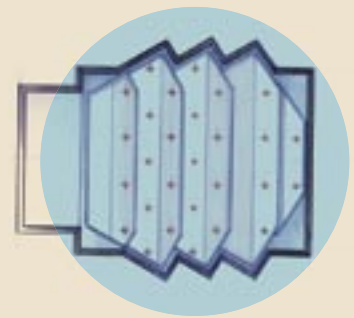
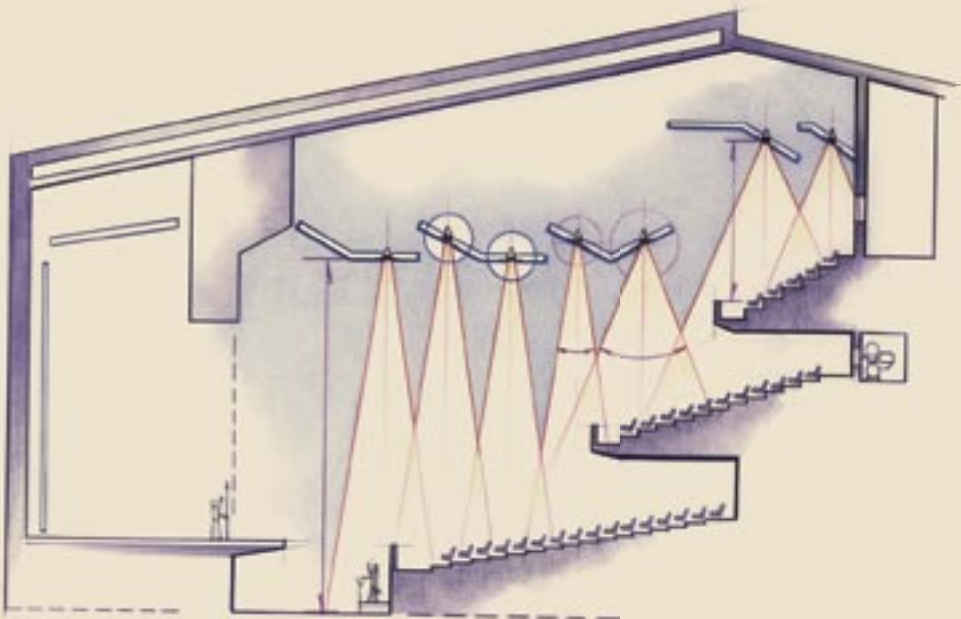
Ask your lighting representative for detailed information on Gotham's new GQ family of ellipsoidal quartz luminaires and how they complement the full line of Gotham downlighting, or visit our website at www.gothamlighting.com.

In a typical auditorium, lighting designers face architectural complexities such as open ceilings with sloped acoustical panels, multi-tiered seating and angled floors. Gotham's GQ family meets the need for consistent, uniform illumination at all seating levels by offering a range of wattage/lumen packages and beam distribution patterns.

Apertures are minimal and discreet with carefully controlled brightness; there are no distractions from stray light above the ceiling panels.



Gotham GQ luminaires are available in both fixed and tilt versions, allowing light to be directed vertically regardless of ceiling angle (up to 30°).



Uniformity of illumination is achieved by varying wattage, beam distribution and spacing of luminaires to accommodate the changing distances from floor to ceiling.

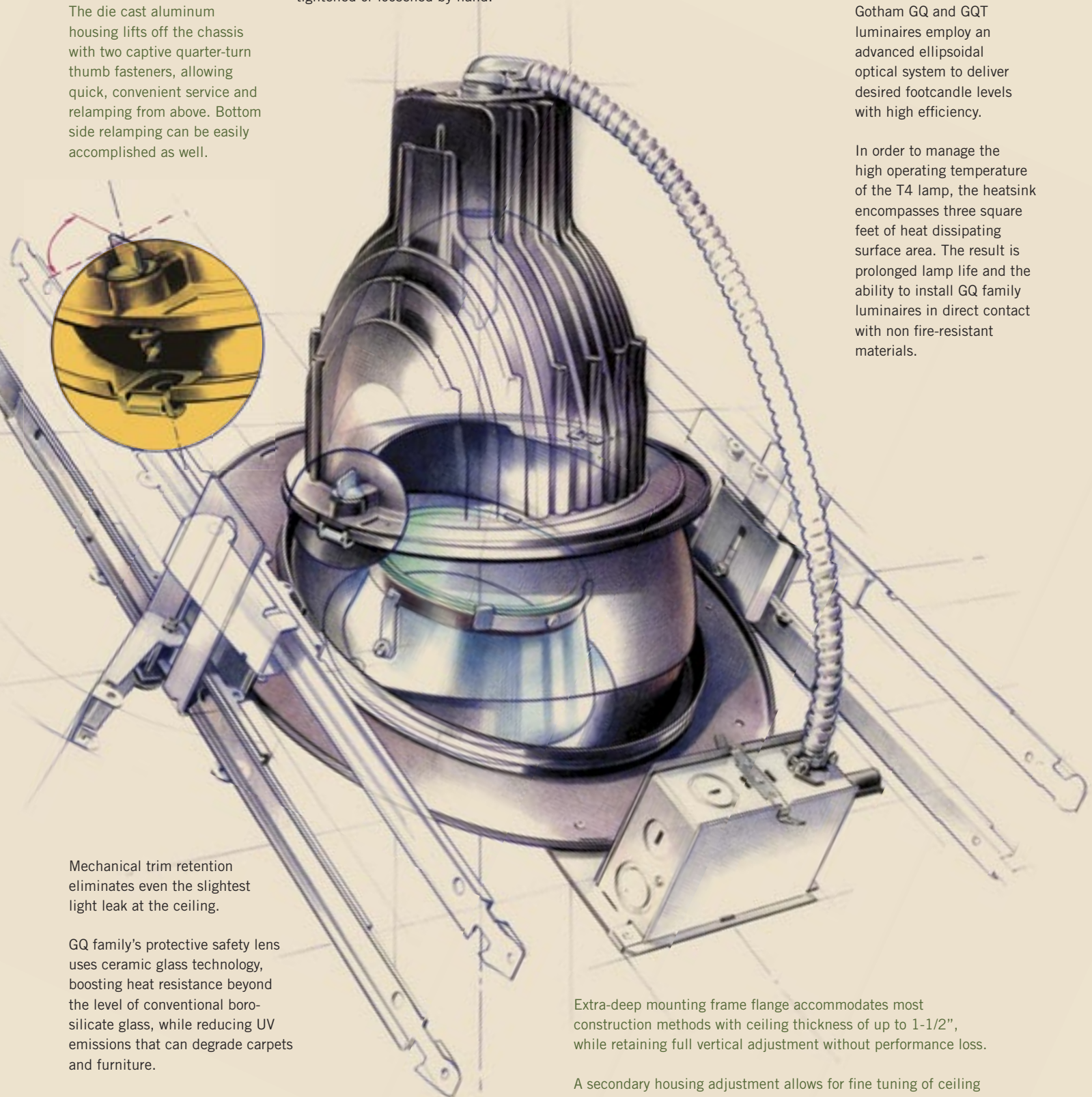


GQT optics tilt off-axis, positioning the lamp for maximum performance. 360° horizontal rotation and up to 30° vertical adjustment are available so that the beam is precisely aimed. Adjustment locks, with fully captive hardware, are easily tightened or loosened by hand.

The die cast aluminum housing lifts off the chassis with two captive quarter-turn thumb fasteners, allowing quick, convenient service and relamping from above. Bottom side relamping can be easily accomplished as well.

Gotham GQ and GQT luminaires employ an advanced ellipsoidal optical system to deliver desired footcandle levels with high efficiency.

In order to manage the high operating temperature of the T4 lamp, the heatsink encompasses three square feet of heat dissipating surface area. The result is prolonged lamp life and the ability to install GQ family luminaires in direct contact with non fire-resistant materials.



Mechanical trim retention eliminates even the slightest light leak at the ceiling.

GQ family's protective safety lens uses ceramic glass technology, boosting heat resistance beyond the level of conventional borosilicate glass, while reducing UV emissions that can degrade carpets and furniture.

Extra-deep mounting frame flange accommodates most construction methods with ceiling thickness of up to 1-1/2", while retaining full vertical adjustment without performance loss.

A secondary housing adjustment allows for fine tuning of ceiling to luminaire alignment after installation.



Gotham's GQ and QGT luminaires offer the application flexibility, advanced optics and thoughtful engineering to meet critical lighting challenges in today's theatres, auditoriums and churches.

ORDERING INFORMATION

SERIES	LAMP WATTAGE ¹	DISTRIBUTION	APERTURE/TRIM COLOR	FINISH	OPTIONS
GQ	150	N Narrow	6AR Clear	(blank) Clear anodized	LRC⁴ Provides compatibility with Lithonia Reloc ® System. Lithonia Reloc System can be installed less this option with connectors provided by others. Access above ceiling required. SDT⁵ 277V Step down transformer (277V to 120V). TRBL Black painted flange. TRW White painted flange. WLP Lamp (shipped seperately).
GQT	250	M Medium	6PR Pewter	LD Diffuse	
	400	W Wide	6UBR Umber	LS Specular	
	500		6WTR Wheat		
			6CR Champagne		
			6GR Gold		
			6BR² Black		
			6MB^{2,3} Black baffle		
			6WB^{2,3} White baffle		

NOTES

- ¹ Recommended for use with frosted lamp.
- ² Not available with LD or LS finish.
- ³ Available with GQ only.
- ⁴ For compatible Reloc systems, refer to Technical Bulletins tab.
- ⁵ Available in 150 and 250 watt only.

gotham®

GOTHAM ARCHITECTURAL DOWNLIGHTING
 1400 Lester Rd Conyers, Georgia 30012
 P 800 315 4982 F 770 860 3129
 www.gothamlighting.com
 An AcuityBrands Company