



Catalog Number	
Notes	Type

FEATURES & SPECIFICATIONS

INTENDED USE

The Quick-Flex Extender is a male/female cable that provides additional length anywhere within the Quick-Flex system.

ELECTRICAL

Rated for use on 20-amp branch circuits
 All conductors are No. 12AWG copper with 90°C thermoplastic insulation rated 600v
 All components provide a fully-rated No. 12AWG grounding conductor

SYSTEM FEATURES

Pin and socket contacts
 Color-coded labels for quick voltage identification
 Safety-keg prevents accidental mating of components with different voltages
 Auto-latching springs for easy male/female connections
 Green Armor standard for easy identification in Health Care Facilities

LISTINGS

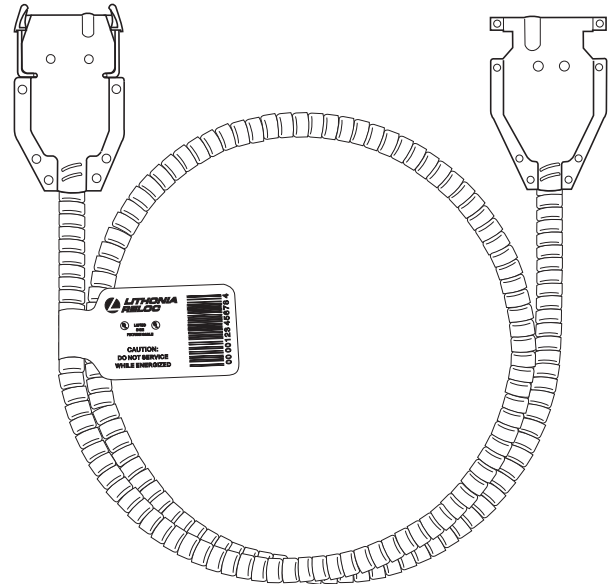
UL Listed
 Built to UL Standard 183 for Manufactured Wiring Systems and suitable for air handling spaces above grid ceiling as described in NEC 300.22(C)
 Listed and labeled to comply with Canadian Standards
 Patent Pending
 Meets NEC requirements for redundant ground paths for Patient Care Areas in Health Care Facilities

WARRANTY

One Year from the date of purchase.

Recessed Ceiling Lighting System

QE
Quick-Flex
Extender



QUICK-FLEX

ORDERING INFORMATION

Example: **QE120 12/2G05**

FOR SHORTEST LEAD TIMES, CONFIGURE PRODUCT USING STANDARD OPTIONS (SHOWN IN BOLD).

QE				
Series	Voltage	Conductors	Length	Option ¹
QE	120 120V	12/2G Two 12AWG conductors, plus 12AWG ground	05	HCF Meets Health Care Facility requirements
	277 277V		09	
	347 347V	12/3G Three 12AWG conductors, plus 12AWG ground	11	X Cross-over Cable
			15	
			21	

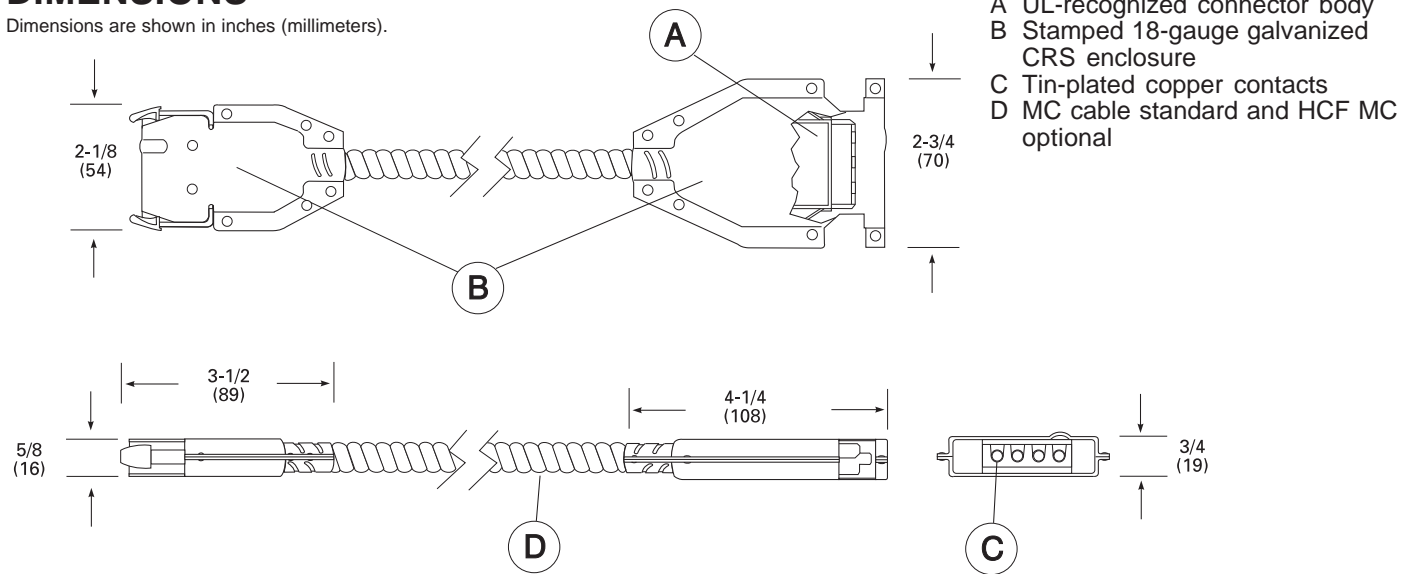
NOTES:

1. X option available with 12/3G conductors only.
 See internal wiring diagram for more information.

QE Extender, Quick-Flex

DIMENSIONS

Dimensions are shown in inches (millimeters).

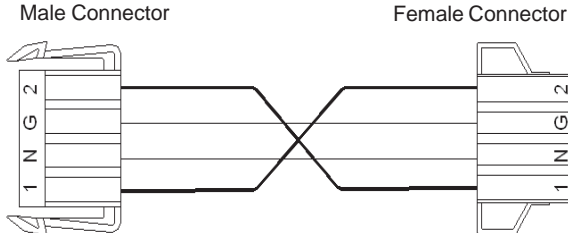


- NOTE:**
- 1 One or two hot conductors in 120, 277, 347V as required.
 - 2 Prefabricated Quick-Flex extender carrying No. 12 AWG copper conductors, 600V, 90°C thermoplastic insulation and fully-rated grounding conductor. Rated for 20-amp capacity.

Auto-Balancing "X" Extender Cable

Power is equally balanced between phases when "X" cables are connected. The balancing is done in the Quick-Flex cabling, devices are wired identically and any changes in the installation will be automatically balanced.

QE Internal Wiring Diagram



- NOTE:**
1. Ground wire optional
 2. The first phase connected may determine if additional "X" extender cables are required to alternate phases correctly.
 3. If the length of fixture cable used does not extend to the next location, additional extender cables may be required to alternate phases.

SYSTEM VIEW

