



FEATURES & SPECIFICATIONS

INTENDED USE

The Quick-Flex Fixture Cable is a male/female cable that provides power from fixture to fixture. The access plate is included (standard) with the QFC to provide quick and easy fixture installation.

ELECTRICAL

Rated for use on 20-amp branch circuits

All conductors are No. 12 AWG copper with 90°C thermoplastic insulation rated 600V

All components provide a fully-rated No. 12 AWG grounding conductor

Fixture leads are No. 18 AWG solid copper with pushnut terminals for easy connection to ballast leads; wirenuts not required

Safety-keying prevents accidental mating of components with different voltages

SYSTEM FEATURES

Pin and socket contacts

Color-coded labels for quick voltage identification

Lithonia access plate included with the QFC (standard) for quick and easy fixture installation.

No fixture ground lead to connect.

Access plate provides UL/C-UL listed ground path to fixture when fully installed.

Auto-latching springs for easy male/female connections.

Available in varying lengths to suit most common fixture spacing requirements.

Green Armor standard for easy identification in Health Care Facilities

LISTINGS

UL listed

Listed and labeled to comply with Canadian Standards

Patent Pending

Meets NEC requirements for redundant ground paths for Patient Care Areas in Health Care Facilities.

WARRANTY

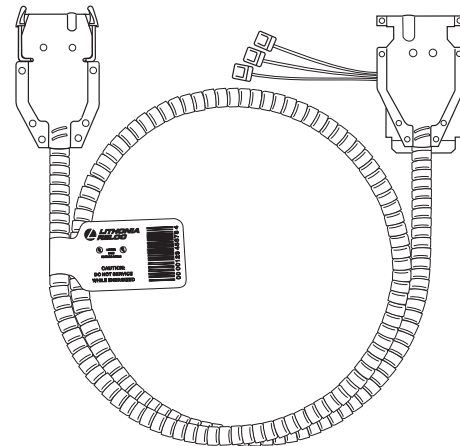
One year from the date of purchase.

| | |
|----------------|------|
| Catalog Number | |
| Notes | Type |

Recessed Ceiling Lighting System

QFC

Quick-Flex Fixture Cable



QUICK-FLEX

ORDERING INFORMATION

Example: **QFC120 12/2G09G**

FOR SHORTEST LEAD TIMES, CONFIGURE PRODUCT USING STANDARD OPTIONS (SHOWN IN BOLD).

| QFC | | | | |
|------------|---|--|--|--|
| Series | Voltage | Conductors | Length | Option ^{1,2} |
| QFC | 120 120V 277 277V 347 347V | 12/2G Two 12AWG conductors, plus 12AWG ground 12/3G Three 12AWG conductors, plus 12AWG ground | 05 07 09 11 13 15 | G 18AWG ground lead dropped to fixture HCF Meets Health Care Facility requirements X Cross-over Cable |

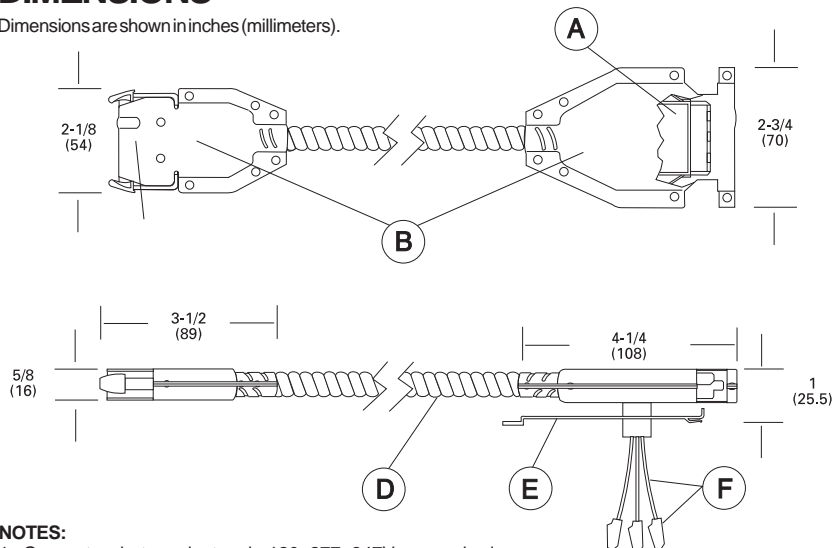
NOTES:

1. G option required for Canada and HCF option.
2. X option available with 12/3G conductors only. See internal wiring diagram for more information.

QFC Quick-Flex® Fixture Cable

DIMENSIONS

Dimensions are shown in inches (millimeters).

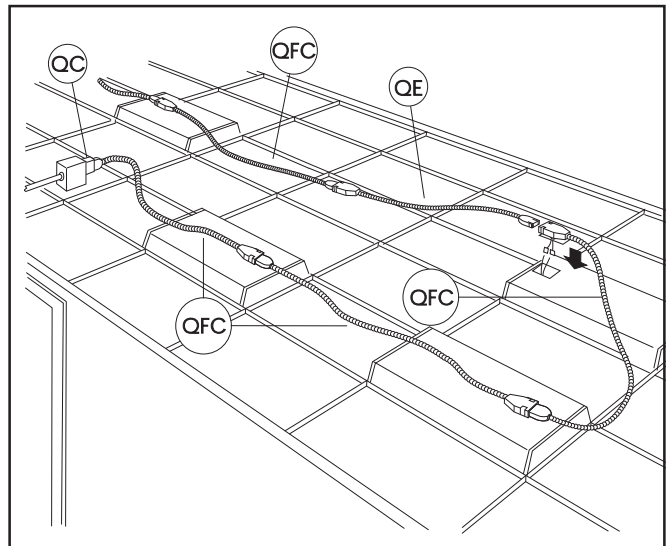


- A UL-recognized connector body
- B Stamped 18-gauge galvanized CRS enclosure
- C Tin-plated copper contacts
- D MC cable standard and HCF MC optional
- E Lithonia access plate included with fixture cable; provides fixture grounding
- F No. 18 AWG solid copper wires rated at 600V, 90°C thermoplastic insulation with UL-recognized pushnut terminals.

NOTES:

- 1 One or two hot conductors in 120, 277, 347V as required.
- 2 Prefabricated Quick-Flex fixture cable carrying No. 12 AWG copper conductors, 600V, 90°C thermoplastic insulation and fully-rated grounding conductor. Rated for 20-amp capacity.
- 3 Fixture cable provides auto-grounding to fixture unless otherwise specified.

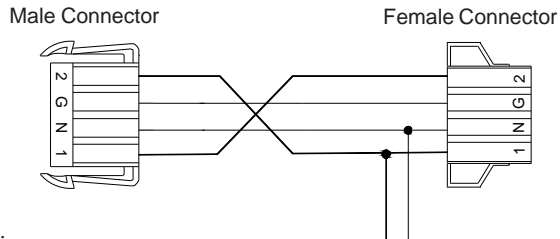
SYSTEM VIEW



Auto-Balancing "X" Fixture Cable

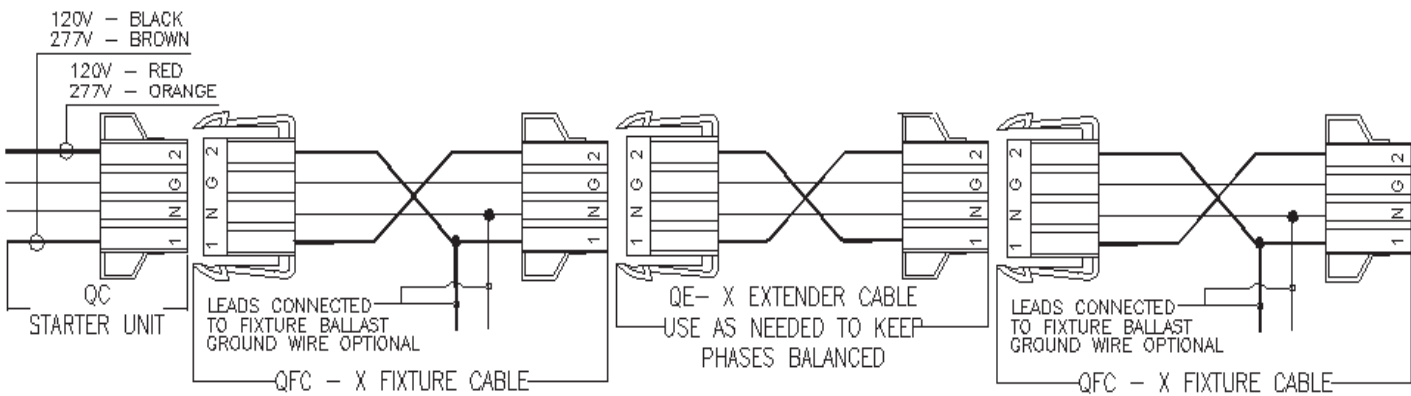
Power is equally balanced between phases when "X" cables are connected. The balancing is done in the Quick-Flex cabling, devices are wired identically and any changes in the installation will be automatically balanced.

QFC Internal Wiring Diagram



NOTE:

1. Ground wire optional
2. The first phase connected may determine if additional "X" extender cables are required to alternate phases correctly.
3. If the length of fixture cable used does not extend to the next location, additional extender cables may be required to alternate phases.



RELOC Wiring Solutions

1335 Industrial Blvd., Conyers, GA 30012
 Phone: 800-241-4750 Fax: 770-808-8650
 www.relocwiring.com