

Valiant

Series AVPL2

LED Colonial Lantern

The AVPL2 series combines aesthetics and install-friendly features with a powerful new electronic platform. The AVPL2's LED light engine offers excellent optical control and heat dissipation to provide a beautiful, efficient lighting source while preserving the life of the fixture. Next generation D4i® digital drivers are now paired with a wide portfolio of trusted DTL® controls.

For smart and connected city applications, this variety of control options offers simple and affordable asset management through modern secure web and mobile applications.

With features that you would expect in a much more expensive product, this cost-effective solution addresses customers' needs... low initial cost, low energy cost, and no maintenance.



Key Selling Points

- Visually comfortable acrylic or polycarbonate lens panels
- Acrylic refractor provides additional vertical foot-candles with a visually comfortable appearance
- Options for fully networked controls including embedded cellular technology, P7 receptacles or Zhaga solutions
- New embedded DC powered controls synergize with digital drivers and showcase Acuity Brands vertical integration
- Bluetooth® wireless technology option for point-to-point control
- Digital drivers with pre-loaded asset data and field diagnostic capabilities
- XVOLT driver option for protection against dropped neutral and other dirty power issues
- **Municipalities:** Energy efficiency and holistic longevity make it an excellent solution for renovating legacy streetlights
- **Utilities:** Lineman-friendly features and long, reliable operating life to reduce the hassle of lighting grid maintenance

Quick Facts

- 30-110W LED to replace 50-250W HID
- 3,100 to 13,700 lumens and up to 127 LPW
- Easy to handle at just 38 lbs.
- Types 2, 3 & 5 distributions available
- 2700K, 3000K & 4000K CCT, 70 CRI minimum
- ANSI C136 20kV/10kA "extreme" surge protection standard
- 40° C rated with expected system life of >100K hours
- Utility-friendly features available such as toolless entry door and pre-wired 3-stage terminal block
- Adjustable lumen output at each pole with optional A0 module

Multiple control and sensor platforms for any need

The Valiant AVPL2 series combines visually comfortable performance with a wide assortment of embedded and field-installed controls to improve energy savings, enhance system security and simplify asset management. With the AVPL2 you get simplified installation and control combined with reduced maintenance and long, reliable system life. The information below gives a brief look into how the control solutions offered with the AVPL2 can simplify and reduce costs in your lighting infrastructure operations.

DTL DC CONNECT

Greatest value for dusk-to-dawn control. Embedded DC-powered photocontrol from DTL reduces common failure points.

DTL LOCAL CONNECT

Embedded DC-powered photocontrol from DTL communicates to Local Connect mobile app and web portal. Also provides a complete database of lighting assets with GPS coordinates and a simple map based interface accessed through the app or the desktop application.

GLOBAL CONNECT

Offers the greatest levels of flexibility and scalability in luminaire configuration options for networked controls, sensors and asset management. Designed to meet NEMA industry standards and Zhaga certifications for receptacles.

CELL CONNECT

Cell Connect is a networked photocontrol with cellular communication. It provides digital switching, precise dimming, and revenue grade metrology. Cell Connect is D4i compliant and leverages embedded D4i drivers to communicate real-time data to UbiVu, a cloud-based asset management system.



DC Connect



Local Connect



NEMA P7 Receptacle



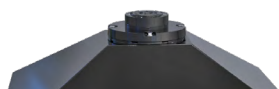
Zhaga Receptacle



Cell Connect

	Dusk to Dawn	Dimming	Scheduling	Embedded Occupancy Sensor	Remote Control	Asset Management	Networked Controls	Sensors	Monitoring
DTL DC Connect	✓								
DTL Local Connect	✓	✓	✓		Bluetooth	✓			
Global Connect	*	*	*		*	*	*	*	*
Cell Connect	✓	✓	✓		✓	✓	✓	*	✓

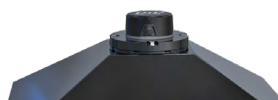
* Capabilities with P7 & Zhaga receptacles are obtained through a variety of DTL or 3rd party plug-in control nodes and sensors.



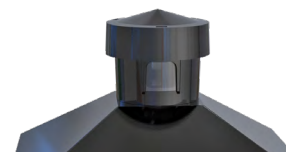
NEMA P3/P7 Receptacle
(No Cupola Shown)



Zhaga Receptacle
(No Cupola Shown)



Embedded Controls
(No Cupola Shown)



Cupola Options
(Smart Node Cupola Shown)



Warranty Five-year limited warranty. Full warranty terms located at www.acuitybrands.com/CustomerResources/Terms_and_conditions.aspx
Visit our web site at www.americanelectricleighting.com
Product specifications may change without notice. Please contact your sales representative for the latest product information.