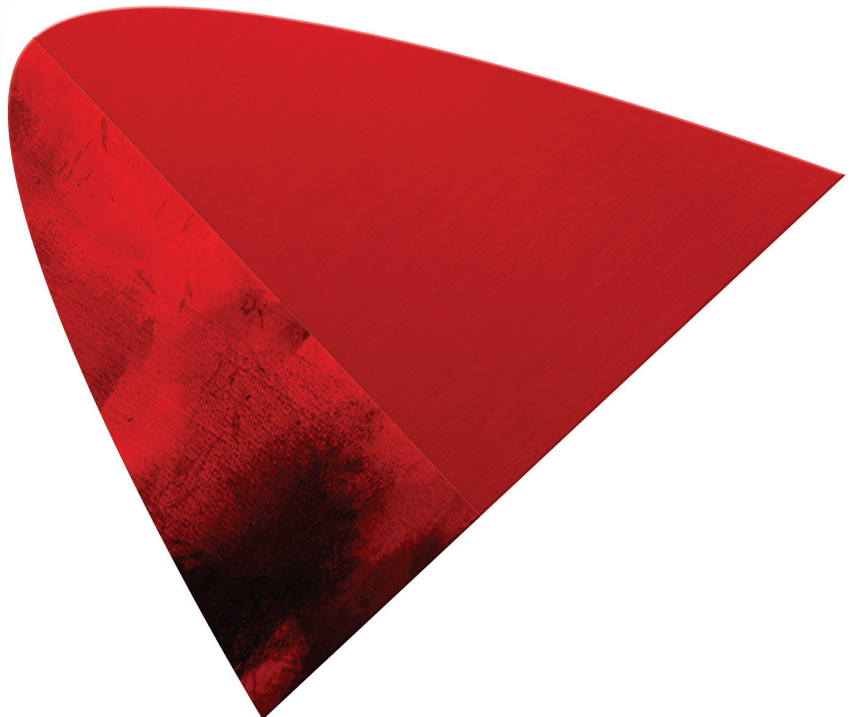
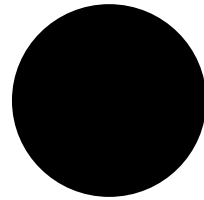
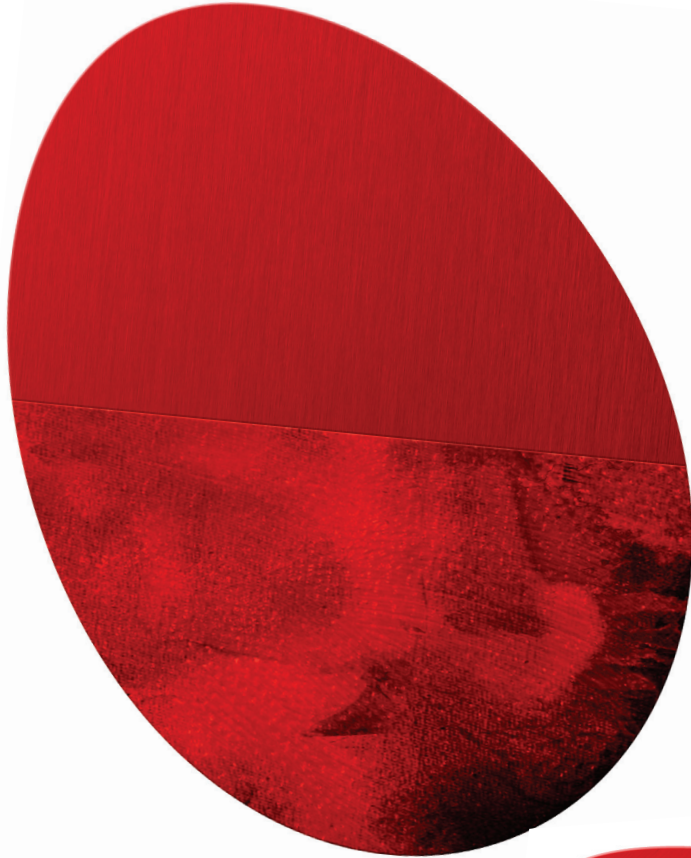
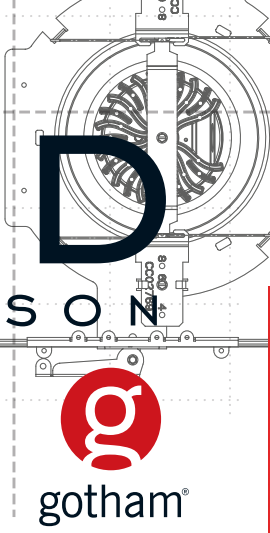


LED

EVO[®] & INCITO[™] COMPARISON

SCIENCE POWERS DESIGN






gotham®

SCIENCE POWERS  DESIGN



PRESENTING GOTHAM INCITO™ & EVO®

 **Gotham® delivers desired visual attributes of traditional sources with all of the benefits of solid-state.** When executing the vision for how to illuminate architecture one selects the appropriate light source based on its distribution, color, life, efficiency and its ability to be controlled, such as dimming. The characteristics of HID, Incandescent, CMH, CFL or Halogen are inherently known and lighting professionals easily can visualize the outcome of how the source and luminaire will render the space. LED as a source has the potential to create many, if not all, of the attributes of each of those traditional sources.

Gotham offers two distinct families of downlights: EVO™ Series providing the soft edge general illumination that you would see from a CFL or frosted A-lamp and the Incito™ Series with the potential to deliver crisp highlights and center beam punch that you would expect from a point source such as a halogen PAR lamp or T6 CMH.

PRECISION ILLUMINATION.



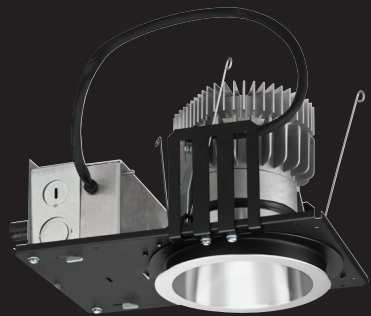
INCITO™ POINT SOURCE

■ Gotham Incito™ is ideal for task, directional, accent lighting, and general illumination. Produces sharp contrast with crisp highlights and deep shadows, creating a look comparable to T6, T4 and MR16. Beam quality is similar to a traditional spot. **Go Forward.**

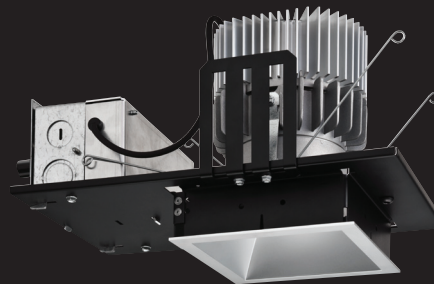
- Precision Illumination
- Lumen Packages up to 6500
- Eldo LED Architectural dimming to less than 1%
- 4" & 6" Apertures
- Self-flanged and flangeless trims



Incito™ LED Luminaires



open round downlight



open square downlight



cylinder



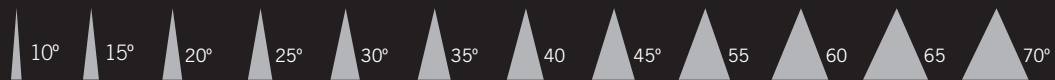
adjustable

Unlocking the full potential of solid-state.

Now is the time to begin thinking differently about architectural downlighting. Specify Incito™ give you more than 5,000 unique performance combinations. All spaces are unique, as are the experiences of moving through them. Light them with freedom.

color temperature — 2700K | 3000K | 3500K | 4000

distributions



lumen packages — 500 | 1000 | 1500 | 2000 | 2500 | 3000 | 3500 | 4000 | 4500 | 5000 | 5500 | 6000 | 6500

EVO®

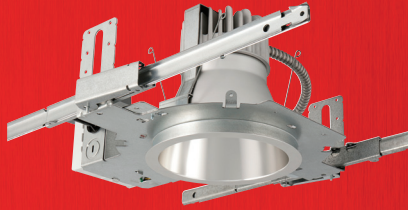
DIFFUSE SOURCE

■ Gotham Evo® is ideal for general ambient, wallwash, and decorative illumination. Quality of light is diffuse with soft edges, comparable to CFL or an etched A lamp. Beam quality is similar to a general flood. **Future Ready.**

- General Illumination
- Decorative and Special Application Options
- Lumen Packages up to 2900
- 4", 6" & 8" Apertures
- Self-flanged & flangeless trims



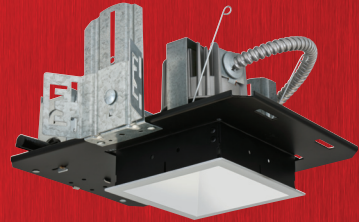
Evo[®] LED Luminaires



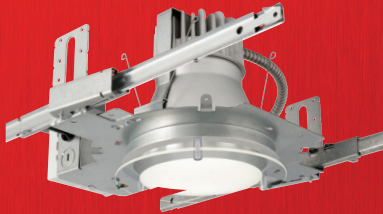
open downlight / wallwash



cylinder



open square downlight



decorative ring or disk



vandal resistant



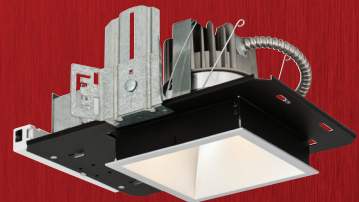
round lensed wallwash



IP65 shower light



open retrofit



square lensed wallwash

Get ready to embrace change.

High performance combined with visual elegance, delivered at a level of energy efficiency. All delivered with performance and technical ingenuity. **With Evo, change equals more.**

color temperature

2700K | 3000K | 3500K | 4000


lumen packages

600 | 1000 | 1400 | 1800 | 2000 | 2200 | 2900

distributions



EVO® & INCITO™

 The design team at Gotham has created two revolutionary LED luminaire systems that work together to unlock the full potential of solid state.

For more information please visit www.gothamlighting.com.

