

Gotham Architectural Downlighting
Compact Fluorescent Downlights

8" AF
Open Reflector

Horizontal Lamp
Double Twin-Tube



FEATURES

OPTICAL SYSTEM

- Self-flanged, semi-specular, matte-diffuse, or specular reflector. Patented Bounding Ray™ Optical Principle design (U.S. Patent No. 5,800,050). Minimum flange matches reflector finish.

MECHANICAL SYSTEM

- 16-gauge galvanized steel construction; maximum 2-1/4" ceiling thickness.
- Telescopic mounting bars maximum of 32" and minimum of 15", preinstalled, 4" vertical adjustment.
- Toolless post-installation adjustments.
- Junction box capacity: 8 (4 in, 4 out) 12AWG rated for 90°C.

ELECTRICAL SYSTEM

- Horizontally mounted, positive-latch, thermoplastic socket.
- Class P, thermally protected high-power-factor ballast(s) mounted to the junction box.

LISTING

- Fixtures are UL listed for thru-branch wiring, non-IC recessed mounting and damp locations. Listed and labeled to comply with Canadian standards.

WARRANTY

- 1-year limited warranty. Complete warranty terms located at: www.acuitybrands.com/support/customer-support/terms-and-conditions

EXAMPLE: AF 2/18DTT 8AR MVOLT

Series	Wattage/Lamp	Aperture/Trim color	Finish	Lens type	Voltage	Ballast ³
AF	1/13DTT	8AR Clear	(blank) Semi-specular	(blank) No lens	MVOLT ²	(blank) Electronic ballast
	2/13DTT	8PR Pewter	LD Matte-diffuse	CGL Clear glass lens	120	ECOS ^{2,4} Lutron® EcoSystem® electronic dimming ballast. Minimum dimming level 5%
	1/18DTT	8WTR Wheat		PCL Clear polycarbonate lens	277	ADEZ ^{4,5} Advance Mark 10® electronic dimming ballast. Minimum dimming level 5%
	2/18DTT	8BC ¹ Black cone		PPC Prismatic polycarbonate lens	347	ADZT ² Advance Mark 7® electronic dimming ballast. Minimum dimming level 5%
	1/26DTT	8MB ¹ Black baffle		FOL Flat opal lens		
	2/26DTT	8WR ¹ White painted				
		8WB ¹ White baffle				

ORDERING INFORMATION

Options

DS	Dual switching	TRBL	Black painted flange
EL⁶	Emergency battery pack with integral test switch	RRL⁷	RELOC®-ready luminaire. Provides compatibility with Lithonia RELOC system. Access above ceiling required.
ELR⁶	Emergency battery pack with remote test switch	CP⁸	Chicago plenum
ELHL⁶	High-lumen-output emergency battery pack with integral test switch	BDP^{8,9}	Ballast disconnect plug
ELRHL⁶	High-lumen-output emergency battery pack with remote test switch	NPP16D EFP	nLight network power/relay pack with 0-10V dimming.
GMF⁵	Single, slow-blow fuse	NPP16D ER EFP	nLight network power/relay pack with 0-10V dimming. ER controls fixtures on emergency circuit.
GLR⁵	Single, fast-blow fuse	WL	Wet location; lens required
WLP	With 3500 K lamp (shipped separately)	WRL¹⁰	Wattage restriction label
TRW	White painted flange (standard on MB and WB)	TWS	Twist lock socket

ACCESSORIES order as separate catalog numbers (shipped separately)

SCA8 Sloped ceiling adapter. Degree of slope must be specified (10D, 15D, 20D, 25D, 30D). Ex: SCA8 10D.

8" AF

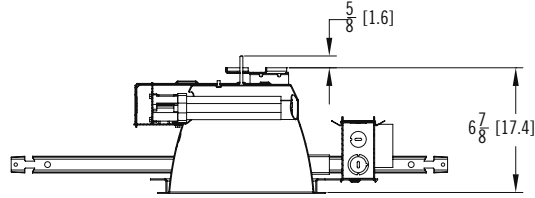
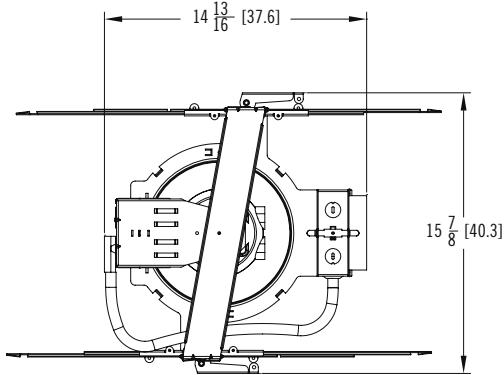
Open Reflector

Horizontal Lamp, Double Twin-Tube



DIMENSIONAL DATA

All dimensions are inches (centimeters) unless otherwise noted.



- Aperture: 8 (20.3)
- Ceiling opening: 8-7/8 (22.5)
- Overlap trim: 9-1/4 (23.4)
- Lens recess: 2-5/8 (6.7)

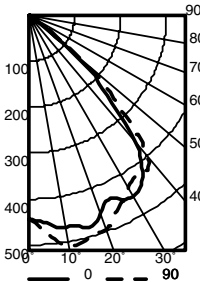
NOTES

ORDERING NOTES

1. Not available with finishes.
2. Multi-volt electronic ballast capable of operating on any voltage from 120V through 277V, 50 or 60 Hz.
3. For additional ballast types, refer to [TECH-250](#).
4. Not available with 13DTT.
5. Available in 120V or 277V only.
6. For dimensional changes, refer to [TECH-140](#).
7. For compatible RELOC systems, refer to [TECH-110](#).
8. Not available with emergency options.
9. Meets codes that require in-fixture disconnect.
10. Must specify wattage. Ex.: WRL32

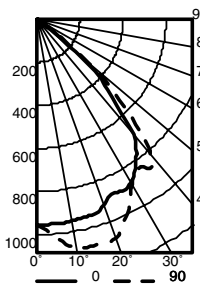
Distribution Curve Distribution Data Output Data Coefficient of Utilization Illuminance: Single Luminaire 30" Above Floor

AF 2/18DTT 8AR (2) CF18DD/E/835 LAMP, 2500 TOTAL RATED LUMENS, TEST NO. LTL10614



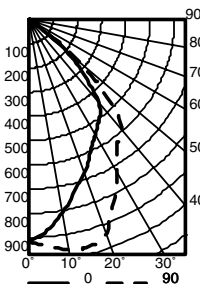
From 0°	Ave Lumens	Zone Lumens % Lamp	Zone Lumens % Lamp	pf	20%						50% beam angle		10% beam angle		
					80%		70%		50%		71.1°		98.9°		
					50%	30%	50%	30%	50%	30%	Initial fc	fc at	Beam	Beam	fc at
0	445	0° - 30° 401.3 16.1	1	.40	.39	.39	.38	.37	.37	Mount height	at beam center	Beam diameter	beam edge	Beam diameter	beam edge
5	462	0° - 40° 660.5 26.4	2	.36	.34	.36	.34	.34	.33	8	14.7	7.9	7.4	12.9	1.5
15	499	0° - 60° 903.3 36.1	3	.33	.31	.32	.30	.31	.30	10	7.9	10.7	4.0	17.5	0.8
25	468	0° - 90° 907.3 36.3	4	.30	.28	.30	.27	.29	.27	12	4.9	13.6	2.5	22.2	0.5
35	415	90° - 180° 0.0 0.0	5	.28	.25	.27	.25	.26	.24	14	3.4	16.4	1.7	26.9	0.3
45	250	0° - 180° 907.3 *36.3	6	.25	.23	.25	.22	.24	.22	16	2.4	19.3	1.2	31.6	0.2
55	35	*Efficiency	7	.23	.21	.23	.20	.22	.20						
65	3		8	.21	.19	.21	.19	.21	.19						
75	1		9	.20	.17	.20	.17	.19	.17						
85	0		10	.18	.16	.18	.16	.18	.16						
90	0														

AF 2/26DTT 8AR (2) CF26/DD/E/835 LAMP, 3600 TOTAL RATED LUMENS, TEST NO. LTL10615



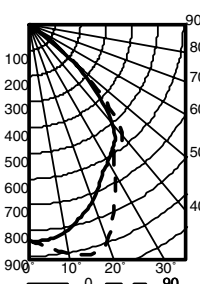
From 0°	Ave Lumens	Zone Lumens % Lamp	Zone Lumens % Lamp	pf	20%						50% beam angle		10% beam angle		
					80%		70%		50%		69.5°		98.8°		
					50%	30%	50%	30%	50%	30%	Initial fc	fc at	Beam	Beam	fc at
0	956	0° - 30° 857.8 23.5	1	.58	.56	.56	.55	.54	.53	Mount height	at beam center	Beam diameter	beam edge	Beam diameter	beam edge
5	989	0° - 40° 1397.1 38.3	2	.53	.50	.52	.49	.50	.48	8	31.6	7.6	15.8	12.8	3.2
15	1059	0° - 60° 1915.0 52.5	3	.48	.45	.47	.44	.46	.43	10	17.0	10.4	8.5	17.5	1.7
25	1009	0° - 90° 1923.9 52.7	4	.44	.40	.43	.40	.42	.39	12	10.6	13.2	5.3	22.2	1.1
35	859	90° - 180° 0.0 0.0	5	.40	.36	.39	.36	.38	.35	14	7.2	16.0	3.6	26.9	0.7
45	539	0° - 180° 1923.9 *52.7	6	.37	.33	.36	.33	.35	.32	16	5.2	18.7	2.6	31.5	0.5
55	78	*Efficiency	7	.34	.30	.33	.30	.33	.29						
65	6		8	.31	.27	.31	.27	.30	.27						
75	2		9	.29	.25	.29	.25	.28	.25						
85	0		10	.27	.23	.26	.23	.26	.23						
90	0														

AF 2/26DTT 8BC (2) CF26DD/E/835 LAMP, 3600 TOTAL RATED LUMENS, TEST NO. LTL10946



From 0°	Ave Lumens	Zone Lumens % Lamp	Zone Lumens % Lamp	pf	20%						50% beam angle		10% beam angle		
					80%		70%		50%		61.8°		97.1°		
					50%	30%	50%	30%	50%	30%	Initial fc	fc at	Beam	Beam	fc at
0	916	0° - 30° 727.1 19.9	1	.47	.45	.46	.45	.44	.43	Mount height	at beam center	Beam diameter	beam edge	Beam diameter	beam edge
5	924	0° - 40° 1136.9 31.1	2	.43	.40	.42	.40	.40	.39	8	30.3	6.6	15.1	12.4	3.0
15	922	0° - 60° 1550.4 42.5	3	.39	.36	.38	.36	.37	.35	10	16.3	9.0	8.1	17.0	1.6
25	828	0° - 90° 1553.4 42.6	4	.36	.33	.35	.32	.34	.32	12	10.1	11.4	5.1	21.5	1.0
35	653	90° - 180° 0.0 0.0	5	.33	.30	.32	.29	.31	.29	14	6.9	13.8	3.5	26.0	0.7
45	428	0° - 180° 1553.4 *42.6	6	.30	.27	.30	.27	.29	.26	16	5.0	16.2	2.5	30.5	0.5
55	77	*Efficiency	7	.28	.25	.27	.24	.27	.24						
65	3		8	.25	.22	.25	.22	.25	.22						
75	0		9	.24	.21	.23	.21	.23	.20						
85	0		10	.22	.19	.22	.19	.21	.19						
90	0														

AF 2/26DTT 8MB, (2) CF26DD/E/835 LAMP, 3600 TOTAL RATED LUMENS, TEST NO. LTL10982



From 0°	Ave Lumens	Zone Lumens % Lamp	Zone Lumens % Lamp	pf	20%						50% beam angle		10% beam angle		
					80%		70%		50%		62.0°		96.7°		
					50%	30%	50%	30%	50%	30%	Initial fc	fc at	Beam	Beam	fc at
0	840	0° - 30° 685.0 18.8	1	.43	.42	.42	.41	.41	.40	Mount height	at beam center	Beam diameter	beam edge	Beam diameter	beam edge
5	858	0° - 40° 1062.7 29.1	2	.39	.37	.39	.37	.37	.36	8	27.8	6.6	13.9	12.4	2.8
15	877	0° - 60° 1432.2 39.2	3	.36	.34	.35	.33	.34	.33	10	14.9	9.0	7.5	16.9	1.5
25	779	0° - 90° 1435.6 39.3	4	.33	.30	.32	.30	.32	.29	12	9.3	11.4	4.7	21.4	0.9
35	600	90° - 180° 0.0 0.0	5	.30	.27	.30	.27	.29	.27	14	6.4	13.8	3.2	25.9	0.6
45	386	0° - 180° 1435.6 *39.3	6	.28	.25	.27	.25	.27	.24	16	4.6	16.2	2.3	30.4	0.5
55	62	*Efficiency	7	.26	.23	.25	.23	.25	.22						
65	3		8	.24	.21	.23	.21	.23	.21						
75	0		9	.22	.19	.22	.19	.21	.19						
85	0		10	.20	.18	.20	.18	.20	.18						
90	0														

PHOTOMETRY NOTES

- Tested to current IES and NEMA standards under stabilized laboratory conditions.
- Actual performance may differ as a result of end-user environment and application.
- Consult factory or IES file for microgroove baffle, black cone or other photometric reports.