

FEATURES

OPTICAL SYSTEM

- Self-flanged, matte-diffuse high impact polymer finishing trim with a durable, proprietary vapor deposition finish.
- Patented Bounding Ray™ Optical Principle design (U.S. Patent No. 5,800,050) provides lamp before lamp image and smooth transition from top of the reflector to bottom.
- One piece trim eliminates mitered flange corners and inside corner gaps.
- Tool-less 0°-45° vertical and 360° horizontal lamp adjustments made with the trim assembly removed for simple focusing.
- Lamp snoot minimizes stray light in housing and accommodates up to two lenses.
- Relamping capability from above or below ceiling.
- Softening lens standard.

MECHANICAL SYSTEM

- Rolled steel housing with matte black finish and 16-gauge painted steel mounting/plaster frame accommodates up to 1-1/2" thick ceiling materials.
- Patent-pending adjustable aperture allows 1/4" adjustments in all directions and up to 5° of rotation allowing post-installation adjustments to ensure trim to trim alignment.
- 16-gauge galvanized steel mounting bars with continuous 4" vertical adjustments are shipped pre-installed.
- Post-installation adjustment possible without the use of tools from above or below ceiling.
- Secondary housing adjustment system for precise, final ceiling to flange alignment.

ELECTRICAL SYSTEM

- Socket assembly, electronic stepdown transformer and thermally activated insulation detector provided with easy tool-less removal.

LISTING

- Fixtures are UL listed for thru-branch wiring, Non-IC recessed mounting and damp locations. Listed and labeled to comply with Canadian Standards.

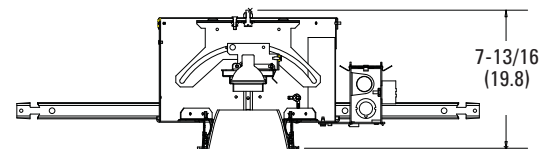
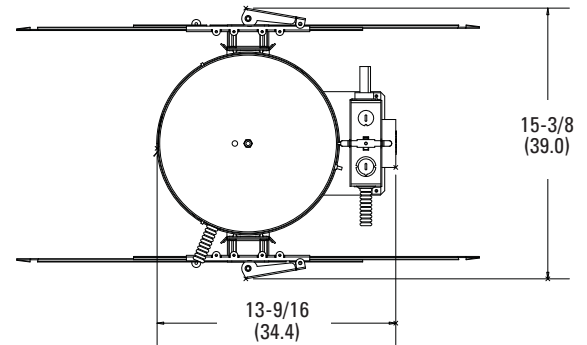
Type

Catalog number

.....

Low Voltage Accent 4" SQDLV

Adjustable Lamp
MR16



All dimensions are inches (centimeters)

Ceiling opening: 5-1/8 (13.0)
 Overlap trim: 5-3/4 (14.6)
 Aperture opening: 4-3/8 (11.1)

ORDERING INFORMATION

Example: **SQDLVADJMR164ARLD120**

Choose the boldface catalog nomenclature that best suits your needs and write it on the appropriate line. Order accessories as separate catalog numbers (shipped separately).

SQDLV		ADJ								
Series	Configuration	Lamp Type	Aperture/Trim	Finish	Voltage	Options				
SQDLV	ADJ	MR16	4AR Clear 4DSR Stepped 4PR Pewter 4WTR Wheat 4WR¹ White 4BR¹ Black 4PDSR Pewter stepped 4WDSR Wheat stepped	(blank) Semi-specular ² LD Matte-diffuse	120 277³ 347	SF Single Fuse LRC⁴ Provides compatibility with Lithonia Reloc System. Access above ceiling required CP Chicago Plenum approved TRW White flange MFLG⁵ Microflange trim SQMT⁶ Square metal trim				

NOTES

- 1 Not available with matte-diffuse finish.
- 2 Available with WR and BR trim colors and SQMT metal trim option.
- 3 Not available with dimming.
- 4 For compatible Reloc systems, refer to TECH-110.
- 5 MFLG standard with high impact polymer trim; must specify SQMT option for metal microflange trim.
- 6 Not available with stepped trims.

Accessories

Order as separate catalog numbers.

- For lens accessories, refer to Technical Bulletins tab.
- For lamp options, refer to Technical Bulletins tab.

4" SQDLV Adjustable Lamp

LAMP PERFORMANCE DATA

All data was calculated from each lamp manufacturer's published data and is subject to normal lamp variations. Maximum footcandle is usually at the aiming point, but not always on wider spread lamps. Lamp data supplied by manufacturers is approximate, and individual lamp performance may vary.

ACCENT LIGHTING ANGLE PERFORMANCE DATA

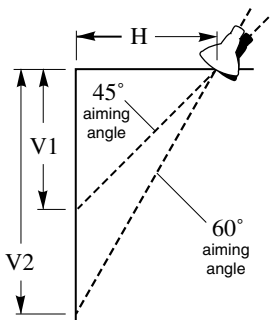
DISTANCE LAMP TO LIGHTED SURFACE				2 FEET			4 FEET				
DISTANCE DOWN TO AIMING POINT				V1 (FT) 2			V2 (FT) 7				
Lamp No.	Watts	Type	MFG.	Beam Width (°) to 50% MBCP	MBCP	Aiming Angle 45° FT-CANDLES	Beam Length	Width	Aiming Angle 60° FT-CANDLES	Beam Length	Width
MR-16											
ESX	20	NSP	GE/SY/PH	15	3600	318	1.1	0.7	28	4.4	2.1
BAB	20	FL	GE/SY/PH	40	525	46	3.4	2.1	4	19.3	5.8
EXT	50	NSP	GE/SY/PH	13	10200	902	0.9	0.6	80	3.8	1.8
EXZ	50	NFL	GE/SY	26	3400	301	2.0	1.3	27	8.8	3.7
EXN	50	FL	GE/SY/PH	40	1850	164	3.4	2.1	14	19.3	5.8
EYJ	71/65	MFL	GE/SY	24	4900	433	1.8	1.2	38	7.9	3.4
EYC	71/65	FL	GE/SY	36	2100	186	2.9	1.8	16	15.2	5.2
MR-11											
FTB	20	SP	SY/PM	10	5000	442	0.7	0.5	39	2.9	1.4
FTD	20	NFL	SY/PM	30	600	53	2.3	1.5	5	10.9	4.3
FTE	35	SP	SY	10	6500	575	0.4	0.5	51	2.9	1.4
FTH	35	NFL	SY/PM	30	1300	115	2.3	1.5	10	10.9	4.3
ALR-12											
GBD	20	NSP	PH	6	7000	619	0.4	0.3	55	1.7	0.8
GBE	20	SP	PH	18	1500	133	1.3	0.9	12	5.5	2.5
GBF	20	FL	PH	32	750	66	2.5	1.6	6	12.2	4.6
ALR-18											
GBJ	50	SP	PH	10	13000	1149	0.7	0.5	102	2.9	1.4
GBK	50	NFL	PH	25	1900	468	1.9	1.3	15	8.3	3.5
AR-70											
20AR70/8/SP	20	SP	SY	8	7000	619	0.6	0.4	55	2.3	1.1
20AR70/25/FL	20	FL	SY	25	850	75	1.9	1.3	7	8.3	3.5
50AR70/8/SP	50	SP	SY	8	15000	1326	0.6	0.4	117	2.3	1.1
50AR70/25/FL	50	FL	SY	25	2000	177	1.9	1.3	16	8.3	3.5

LOCATION OF ACCENT LUMINAIRE TO PROVIDE AIMING PT. 5.5' ABOVE THE FLOOR

Clg. Ht. (ft)	60° Aiming Angle		45° Aiming Angle	
	Out (H)	Down (V2)	Out (H)	Down (V1)
8	1.5	2.5	2.5	2.5
9	2.0	3.5	3.5	3.5
10	2.5	4.5	4.5	4.5

NOTES

- 1 IES indicates 5.5' above the floor is an ideal viewing height.
- 2 Tested to current IES and NEMA standards under stabilized laboratory conditions. Various operating factors can cause differences between laboratory data and actual field measurements. Dimensions and specifications are based on the most current available data and are subject to change without notice.



Formula for other distances and aiming angles.

$$fc = \frac{MBCP \times \text{Cos}^3(\text{aiming angle})}{H^2 (\text{distance from wall squared})}$$

Feet out from wall (H)
6 7 8 9 10

Aiming angle Cos³ Feet down from ceiling (V)

Aiming angle	Cos ³	6	7	8	9	10
45°	.354	6	7	8	9	10
50°	.266	7	8	10	11	12
55°	.189	9	10	11	13	14
60°	.125	10	12	14	16	17
65°	.076	13	15	18	19	21
70°	.040	17	19	22	25	28
75°	.017	22	26	30	34	37

ALV-250

©2009-2012 Acuity Brands Lighting, Inc.
All Rights Reserved. Rev 03/06/12
Specifications subject to change without notice.

gotham
An Acuity Brands Company

GOTHAM ARCHITECTURAL DOWNLIGHTING
1400 Lester Road Conyers Georgia 30012
P 800 315 4982 F 770 860 3129
www.gothamlighting.com