

# FEATURES

## OPTICAL SYSTEM

- Self-flanged, semi-specular or matte-diffuse reflector. Patented Bounding Ray™ Optical Principle design (U.S. Patent No. 5,800,050) provides lamp image and smooth transition from top of the reflector to bottom. Minimum flange matches reflector finish.

## MECHANICAL SYSTEM

- 16-gauge galvanized steel mounting/plaster frame with integral yoke to retain optical system. Maximum 2-1/4" ceiling thickness.
- 16-gauge galvanized steel mounting bars with continuous 4" vertical adjustment are shipped pre-installed. Post-installation adjustment possible without the use of tools from above or below ceiling.
- Galvanized steel junction box with hinged access covers and spring latches. Two combination 1/2"-3/4" and three 1/2" knockouts for straight-through conduit runs. Capacity: 8 (4 in, 4 out) No. 12 AWG conductors, rated for 90°C.

## ELECTRICAL SYSTEM

- Horizontally mounted, positive-latch, thermoplastic socket.
- Class P, thermally protected high-power-factor ballast(s) mounted to the junction box.
- Simply5™ technology available.

## LISTING

- Fixtures are UL listed for thru-branch wiring, non-IC recessed mounting and damp locations. Listed and labeled to comply with Canadian standards.

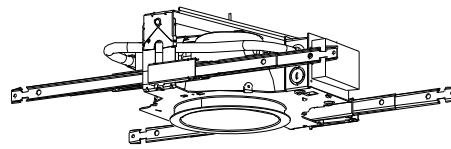
## WARRANTY

- One-year limited warranty. Full warranty terms located at [www.acuitybrands.com/CustomerResources/Terms\\_and\\_conditions.aspx](http://www.acuitybrands.com/CustomerResources/Terms_and_conditions.aspx)

Type Catalog number

.....  
 .....

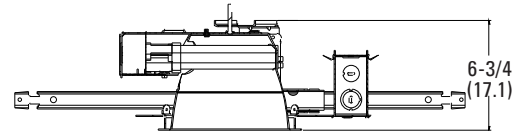
## Compact Fluorescent Downlights



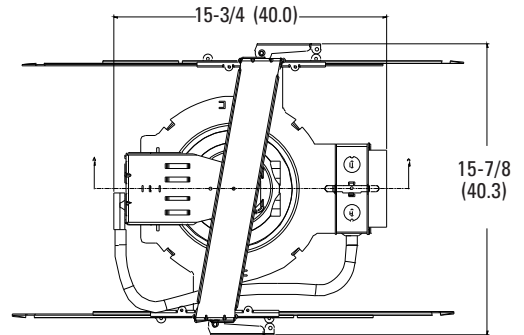
# 6" AF

## Lensed

Horizontal Lamp  
Double Twin-Tube



Aperture: 6-1/4 (15.9)  
 Ceiling opening: 7-1/8 (18.1)  
 Overlap trim: 7-5/8 (19.4)  
 Lens recess: 1-3/4 (4.4)



All dimensions are inches (centimeters).

# ORDERING INFORMATION

Choose the boldface catalog nomenclature that best suits your needs and write it on the appropriate line. Order accessories as separate catalog numbers (shipped separately).

Example: **AF2/18DTT6AR CGL MVOLT WLP**

## AF

Series	Wattage/Lamp	Aperture/Trim color	Finish	Voltage	Ballast <sup>3</sup>	Options
<b>AF</b>	<b>1/13DTT</b>	<b>6AR</b> Clear	(blank) Semi-specular	<b>MVOLT<sup>2</sup></b>	(blank) Electronic ballast	<b>DS</b> Dual switching
	<b>2/13DTT</b>	<b>6PR</b> Pewter	<b>LD</b> Matte-diffuse	<b>120</b>	<b>ECOS<sup>2,4</sup></b> EcoSystem® electronic dimming ballast. Minimum dimming level 5%	<b>ELR<sup>7</sup></b> Emergency battery pack. Remote test switch provided
	<b>1/18DTT</b>	<b>6WTR</b> Wheat		<b>277</b>	<b>ADEZ<sup>4,5</sup></b> Advance Mark 10® electronic dimming ballast. Minimum dimming level 5%	<b>GMF<sup>5</sup></b> Single slow-blow fuse
	<b>2/18DTT</b>	<b>6WR<sup>1</sup></b> White painted		<b>347</b>	<b>ADZT<sup>4,5</sup></b> Advance Mark 7® electronic dimming ballast. Minimum dimming level 5%	<b>GLR<sup>6</sup></b> Single fast-blow fuse
	<b>1/26DTT</b>	<b>6BC<sup>1</sup></b> Black cone			<b>S5<sup>5</sup></b> SIMPLY5™ dimming system. Minimum dimming level 15%	<b>TRW</b> White painted flange. Standard on 6MB and 6WB
	<b>2/26DTT</b>	<b>6MB<sup>1</sup></b> Black baffle				<b>WLP</b> With 3500 K lamp (shipped separately)
		<b>6WB<sup>1</sup></b> White baffle				<b>LRC<sup>8</sup></b> Provides compatibility with Lithonia Reloc® System. Lithonia Reloc System can be installed less option with connectors provided by others. Access above ceiling required
			<b>Lens type</b>			<b>WGT</b> Wet location
			<b>CGL</b> Clear glass lens			<b>NSD<sup>11</sup></b> Sensor Switch nLight™ dimming relay
			<b>CAL</b> Clear acrylic lens			<b>WRL<sup>12</sup></b> Wattage restriction label
			<b>PCL</b> Clear polycarbonate lens			
			<b>T73</b> Tempered prismatic lens			
			<b>PPC</b> Prismatic polycarbonate lens			
			<b>A12</b> Prismatic acrylic lens			
			<b>Accessories</b>			
			Order as separate catalog number.			
			<b>SCA6</b> Sloped ceiling adapter. Degree of slope must be specified (10D, 15D, 20D, 25D, 30D). Ex: SCA6 10D			

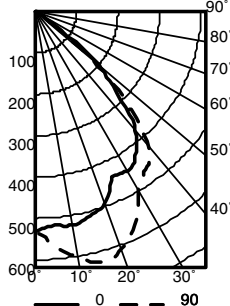
## NOTES

- 1 Not available with finishes.
- 2 Multi-volt electronic ballast capable of operating on any voltage from 120V through 277V, 50 or 60 Hz. Not available with finishes.
- 3 For additional ballast types, refer to TECH-250.
- 4 Not available with 13DTT.
- 5 Available in 120V or 277V only.
- 6 Simply5™ includes 9' S5 MLC Reloc wiring system (shipped separately). Available in 120V or 277V only. Not available with 13W or 18W. See simply5.net for more information.
- 7 For dimensional changes, refer to TECH-140.
- 8 For compatible Reloc systems, refer to TECH-110.
- 9 Not available with emergency options.
- 10 Meets codes that require in-fixture disconnect.
- 11 One 5A relay with one 0-10 VDC dimming output, shipped installed. Requires additional nLight bus power supply (nPS80).
- 12 Must specify wattage. Ex.: WRL32

# 6" AF Lensed

## Distribution curve    Distribution data    Output data    Coefficient of utilization    Illuminance Data at 30" Above Floor for a Single Luminaire

**AF 2/18DTT 6AR CGL**, (2) CF18DD/E/835 lamp, 1250 rated lumens, Test no. LTL10965

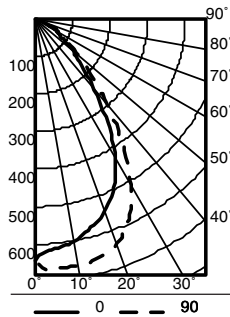


From 0°	Ave	Lumens	Zone	Lumens	% Lamp
0	533		0° - 30°	470.6	18.8
5	556	54	0° - 40°	752.1	30.1
15	593	167	0° - 60°	1023.5	40.9
25	546	250	0° - 90°	1032.9	41.3
35	452	282	90° - 180°	0.0	0.0
45	284	217	0° - 180°	1032.9	*41.3
55	46	55			*Efficiency
65	8	8			
75	1	1			
85	0	0			
90	0	0			

pf	pc	20%				50%			
		80%		70%		50%		30%	
pw	50%	30%	50%	30%	50%	30%	50%	30%	
									1
2	.41	.39	.40	.39	.39	.38	.38	.38	
3	.38	.35	.37	.35	.35	.34	.34	.34	
4	.34	.32	.34	.31	.33	.31	.31	.31	
5	.31	.28	.31	.28	.30	.28	.28	.28	
6	.29	.26	.28	.26	.28	.25	.25	.25	
7	.27	.24	.26	.23	.26	.23	.23	.23	
8	.24	.22	.24	.21	.24	.21	.21	.21	
9	.23	.20	.22	.20	.22	.19	.19	.19	
10	.21	.18	.21	.18	.21	.18	.18	.18	

Mount height	50° beam angle		10° beam angle	
	Initial fc at beam center	Beam diameter	fc at beam edge	Beam diameter
8	17.6	7.4	8.8	12.7
10	9.5	10.0	4.7	17.3
12	5.9	12.7	3.0	21.9
14	4.0	15.4	2.0	26.5
16	2.9	18.1	1.5	31.1

**AF 2/18DTT 6AR T73**, (2) CF18DD/E/835 lamp, 1250 total rated lumens, Test no. LTL10966

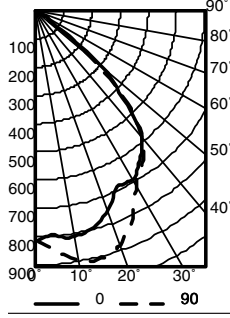


From 0°	Ave	Lumens	Zone	Lumens	% Lamp
0	642		0° - 30°	490.5	19.6
5	648	62	0° - 40°	723.2	28.9
15	628	177	0° - 60°	960.8	38.4
25	554	252	0° - 90°	1003.3	40.1
35	374	233	90° - 180°	0.0	0.0
45	192	151	0° - 180°	1003.3	*40.1
55	95	87			*Efficiency
65	41	40			
75	1	3			
85	0	0			
90	0	0			

pf	pc	20%				50%			
		80%		70%		50%		30%	
pw	50%	30%	50%	30%	50%	30%	50%	30%	
									1
2	.40	.38	.39	.37	.38	.36	.36	.36	
3	.36	.34	.36	.33	.34	.33	.33	.33	
4	.33	.30	.33	.30	.32	.29	.29	.29	
5	.30	.27	.30	.27	.29	.27	.27	.27	
6	.28	.25	.27	.25	.27	.24	.24	.24	
7	.26	.23	.25	.23	.25	.22	.22	.22	
8	.24	.21	.24	.21	.23	.21	.21	.21	
9	.22	.19	.22	.19	.22	.19	.19	.19	
10	.21	.18	.20	.18	.20	.18	.18	.18	

Mount height	50° beam angle		10° beam angle	
	Initial fc at beam center	Beam diameter	fc at beam edge	Beam diameter
8	21.2	6.2	10.6	11.2
10	11.4	8.4	5.7	15.2
12	7.1	10.7	3.6	19.3
14	4.9	12.9	2.4	23.4
16	3.5	15.2	1.8	27.4

**AF 2/26DTT 6AR CGL**, (2) CF26DD/E/835 lamp, 1825 total rated lumens, Test no. LTL10954

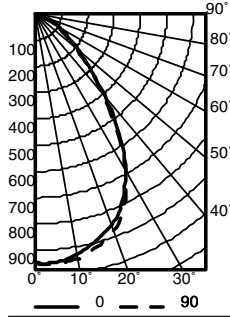


From 0°	Ave	Lumens	Zone	Lumens	% Lamp
0	815		0° - 30°	690.4	18.9
5	839	81	0° - 40°	1099.7	30.1
15	876	246	0° - 60°	1515.9	41.5
25	792	363	0° - 90°	1531.0	41.9
35	658	409	90° - 180°	0.0	0.0
45	435	327	0° - 180°	1531.0	*41.9
55	76	89			*Efficiency
65	12	13			
75	1	2			
85	0	0			
90	0	0			

pf	pc	20%				50%			
		80%		70%		50%		30%	
pw	50%	30%	50%	30%	50%	30%	50%	30%	
									1
2	.42	.40	.41	.39	.40	.38	.38	.38	
3	.38	.36	.37	.35	.36	.34	.34	.34	
4	.35	.32	.34	.32	.33	.31	.31	.31	
5	.32	.29	.31	.29	.31	.28	.28	.28	
6	.29	.26	.29	.26	.28	.26	.26	.26	
7	.27	.24	.27	.24	.26	.23	.23	.23	
8	.25	.22	.24	.22	.24	.21	.21	.21	
9	.23	.20	.23	.20	.22	.20	.20	.20	
10	.21	.18	.21	.18	.21	.18	.18	.18	

Mount height	50° beam angle		10° beam angle	
	Initial fc at beam center	Beam diameter	fc at beam edge	Beam diameter
8	26.9	7.1	13.5	12.7
10	14.5	9.6	7.2	17.3
12	9.0	12.2	4.5	21.9
14	6.2	14.8	3.1	26.5
16	4.5	17.4	2.2	31.1

**AF 2/26DTT 6AR T73**, (2) CF26DD/E/835 lamp, 1825 rated lumens, Test no. LTL10953



From 0°	Ave	Lumens	Zone	Lumens	% Lamp
0	949		0° - 30°	702.0	19.2
5	949	90	0° - 40°	1035.4	28.4
15	903	254	0° - 60°	1380.3	37.8
25	787	358	0° - 90°	1442.3	39.5
35	537	333	90° - 180°	0.0	0.0
45	279	219	0° - 180°	1442.3	*39.5
55	138	126			*Efficiency
65	59	57			
75	2	5			
85	0	0			
90	0	0			

pf	pc	20%				50%			
		80%		70%		50%		30%	
pw	50%	30%	50%	30%	50%	30%	50%	30%	
									1
2	.39	.37	.38	.37	.37	.36	.36	.36	
3	.36	.33	.35	.33	.34	.32	.32	.32	
4	.32	.30	.32	.29	.31	.29	.29	.29	
5	.30	.27	.29	.27	.29	.26	.26	.26	
6	.27	.24	.27	.24	.26	.24	.24	.24	
7	.25	.22	.25	.22	.24	.22	.22	.22	
8	.23	.21	.23	.20	.23	.20	.20	.20	
9	.22	.19	.22	.19	.21	.19	.19	.19	
10	.20	.18	.20	.18	.20	.17	.17	.17	

Mount height	50° beam angle		10° beam angle	
	Initial fc at beam center	Beam diameter	fc at beam edge	Beam diameter
8	31.4	6.0	15.7	11.1
10	16.9	8.2	8.4	15.2
12	10.5	10.4	5.3	19.2
14	7.2	12.6	3.6	23.3
16	5.2	14.8	2.6	27.3

ENERGY (Calculated in accordance with NEMA standard LE-5A)					
LER.DOL	Annual* Energy Cost		Lamp Lumens	Ballast Factor	Input Watts
	Cost	Lamps			
42	\$5.74	(2) 18W DTT	2400	0.98	38
40	\$6.08	(2) 26W DTT	3200	1.00	55

\*Comparative yearly lighting energy cost per 1000 lumens

NOTES:  
 1. For electrical characteristics consult Technical Bulletins tab.  
 2. Tested to current IES and NEMA standards under stabilized laboratory conditions. Various operating factors can cause differences between laboratory data and actual field measurements. Dimensions and specifications are based on the most current available data and are subject to change without notice.  
 3. Actual performance may differ as a result of end-user environment and application.

### DCF-170

©2003-2012 Acuity Brands Lighting, Inc.  
 All Rights Reserved. Rev 03/19/12.  
 Specifications subject to change without notice.



GOTHAM ARCHITECTURAL DOWNLIGHTING  
 A DIVISION OF ACUITY LIGHTING GROUP, INC.  
 1400 Lester Road Conyers Georgia 30012  
 P 800 315 4982 F 770 860 3129  
 www.gothamlighting.com