

FEATURES

OPTICAL SYSTEM

- Reflector - Self-flanged, semi-specular or matte-diffuse reflector. Fluted vertical upper section works in conjunction with patented Bounding Ray™ Optical Principle design (US Patent #5,800,050) to provide lamp before lamp image and smooth transition from top of reflector to bottom. Minimum flange matches reflector finish.
- Cross baffle offers superior optical cut-off with a clean aperture appearance.
- Hinged lampdoor seals upper trim for optimal fixture efficiency and the reduction of stray light in the plenum.

MECHANICAL SYSTEM

- 16-gauge galvanized steel mounting/plaster frame with integral yoke to retain optical system. Maximum 1-1/2" ceiling thickness.
- 16-gauge galvanized steel mounting bars with continuous 4" vertical adjustment are shipped pre-installed. Post-installation adjustment possible without the use of tools from above or below ceiling.
- Galvanized steel junction box with hinged access covers and spring latch. Two combination 1/2"-3/4" and three 1/2" knockouts for straight-through conduit runs. Capacity: 8 (4 in, 4 out) No. 12 AWG conductors, rated for 90°C.

ELECTRICAL SYSTEM

- Horizontally mounted, positive-latch, thermoplastic socket(s).
- Class P, thermally protected high-power-factor electronic ballast mounted to the junction box.
- Simply5™ technology available. SIMPLY5™ LIGHTING INTELLIGENCE

LISTING

- Fixtures are UL Listed for thru-branch wiring, non-IC recessed mounting and damp locations. Listed and labeled to comply with Canadian standards.

WARRANTY

- One-year limited warranty. Full warranty terms located at www.acuitybrands.com/CustomerResources/Terms_and_conditions.aspx

Type

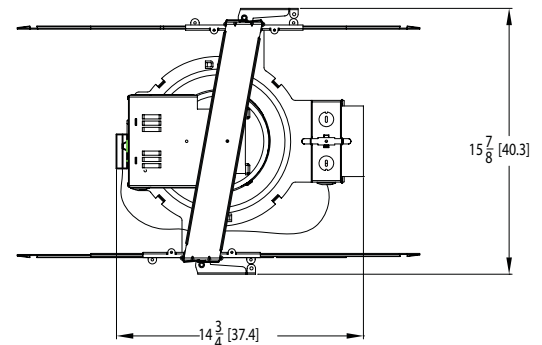
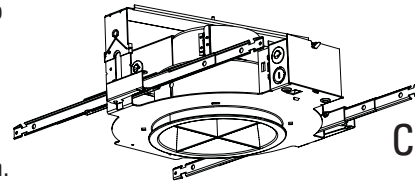
Catalog number

Compact Fluorescent Downlighting

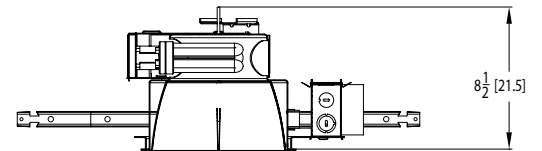
8" AF

Cross Baffle Reflector

Horizontal Lamp Triple Tube



Aperture: 7-7/8 (20.1)
 Ceiling Opening: 8-7/8 (22.5)
 Overlap Trim: 9-1/4 (23.5)



All dimensions are inches (centimeters).

ORDERING INFORMATION

Choose the boldface catalog nomenclature that best suits your needs and write it on the appropriate line. Order accessories as separate catalog number (shipped separately).

Example: **AF 2/32TRT 8CB CGL MVOLT**

AF

Series	Wattage/ Lamp	Aperture/ Trim color	Finish	Lens type	Voltage	Ballast ²	Options		
AF	1/18TRT	2/18TRT	8CB Clear (blank)	Semi-specular	(blank) No lens (standard)	MVOLT¹ (blank) Electronic ballast	ELR⁵ Emergency battery pack. Remote test switch GMF⁴ Single, slow-blow fuse GLR⁴ Single, fast-blow fuse TRW White painted flange TRBL Black painted flange WLP With 3500 K lamp (shipped separately) LRC⁷ Provides compatibility with Lithonia Reloc [®] System. Reloc System can be installed less this option with connectors provided by others. Access above ceiling required CP⁸ Chicago plenum BDP⁹ Ballast disconnect plug HW Hardwire for S5 system; replaces Reloc ELRHL⁶ High lumen output emergency battery pack. Remote test switch provided NSD¹⁰ Sensor Switch nLight™ dimming relay WRL¹¹ Wattage restriction label		
	1/26TRT	2/26TRT						LD Matte-diffuse	CGL Clear glass lens
	1/32TRT	2/32TRT	T73 Tempered prismatic lens	ADEZ⁴ Advance Mark 10 [®] electronic dimming ballast. Minimum dimming level 5%					
	1/42TRT	2/42TRT			ADZT⁴ Advance Mark 7 [®] electronic dimming ballast. Minimum dimming level 5%				
	1/57TRT					S5⁵ SIMPLY5™ system ballast. Minimum dimming level 15%			

Accessories

Order as separate catalog number.

SCA8 Sloped ceiling adapter. Degree of slope must be specified (10D, 15D, 20D, 25D, 30D). Ex: SCA8 **10D**

NOTES

- 1 Multi-volt electronic ballast capable of operating on any voltage from 120V through 277V, 50 or 60 Hz.
- 2 For additional ballast options, refer to TECH-250.
- 3 Not available with 57W.
- 4 Available in 120V or 277V only.
- 5 Simply5™ includes 9' S5 MLC Reloc wiring system (shipped separately). Available in 120V or 277V only. Not available in 18W or 57W. See simply5.net for more information.
- 6 For dimensional changes, refer to TECH-140.
- 7 For compatible Reloc systems, refer to TECH-110.
- 8 Not available with emergency options.
- 9 Meets codes that require in-fixture disconnect.
- 10 One 5A relay with one 0-10 VDC dimming output, shipped installed. Requires additional nLight bus power supply (nPS80).
- 11 Must specify wattage. Ex.: WRL32

8" AF Cross Baffle Reflector

Distribution curve	Distribution data	Output data	Coefficient of utilization	Illuminance Data at 30" Above Floor for a Single Luminaire						
AF 1/32TRT 8CB, (1) CF32DT/E/IN/835, 2400 lumens per lamp, 1.2 s/mh, Test no. LTL9608										
	From 0°	cp. Lumens	Zone Lumens %lamp	ρ f ρ c ρ w	80% 50% 30%	20% 70% 30%	50% 50% 30%	50% beam angle 61.3°	10% beam angle 90.1°	
	0°	796	0°-30° 603.1 25.1	1	50	49	49	48	47	47
	5°	801	0°-40° 895.7 37.3	2	46	44	45	44	44	42
	15°	859	0°-60° 1092.6 45.5	3	42	40	42	39	41	39
	25°	783	0°-90° 1099.5 45.8	4	39	36	39	36	38	35
	35°	392	90°-180° 0.0 0.0	5	36	33	36	33	35	32
	45°	248	0°-180° 1099.5 45.8*	6	33	30	33	30	32	30
	55°	21	*Efficiency	7	31	28	31	28	30	27
	65°	4		8	29	26	28	26	28	25
	75°	2		9	27	24	27	24	26	23
	85°	0		10	25	22	25	22	24	22
90°	0									
Mount height	Initial fc at beam center	Beam diameter	fc at beam edge	Beam diameter	fc at beam edge	Beam diameter	fc at beam edge	Beam diameter	fc at beam edge	
8'	26.3	6.5	13.2	11.0	2.6					
10'	14.2	8.9	7.1	15.0	1.4					
12'	8.8	11.3	4.4	19.0	0.9					
14'	6.0	13.6	3.0	23.0	0.6					
16'	4.4	16.0	2.2	27.1	0.4					

Distribution curve	Distribution data	Output data	Coefficient of utilization	Illuminance Data at 30" Above Floor for a Single Luminaire						
AF 1/42TRT 8CB, (1) CF42DT/E/IN/835, 3200 lumens per lamp, 1.2 s/mh, Test no. LTL9607										
	From 0°	cp. Lumens	Zone Lumens %lamp	ρ f ρ c ρ w	80% 50% 30%	20% 70% 30%	50% 50% 30%	50% beam angle 62.3°	10% beam angle 90.1°	
	0°	1041	0°-30° 866.7 27.1	1	54	53	53	52	51	50
	5°	1025	0°-40° 1273.6 39.8	2	49	47	49	47	47	45
	15°	1100	0°-60° 1560.2 48.8	3	45	43	45	42	43	41
	25°	995	0°-90° 1571.3 49.1	4	42	39	41	38	40	38
	35°	574	90°-180° 0.0 0.0	5	39	35	38	35	37	35
	45°	348	0°-180° 1571.3 49.1*	6	36	32	35	32	35	32
	55°	41	*Efficiency	7	33	30	33	30	32	29
	65°	7		8	31	27	31	27	30	27
	75°	2		9	29	25	28	25	28	25
	85°	0		10	27	24	27	24	26	23
90°	0									
Mount height	Initial fc at beam center	Beam diameter	fc at beam edge	Beam diameter	fc at beam edge	Beam diameter	fc at beam edge	Beam diameter	fc at beam edge	
8'	34.4	6.6	17.2	11.0	3.4					
10'	18.5	9.1	9.3	15.0	1.9					
12'	11.5	11.5	5.8	19.0	1.2					
14'	7.9	13.9	3.9	23.0	0.8					
16'	5.7	16.3	2.9	27.1	0.6					

Distribution curve	Distribution data	Output data	Coefficient of utilization	Illuminance Data at 30" Above Floor for a Single Luminaire						
AF 2/32TRT 8CB, (2) CF32DT/E/IN/835, 2400 lumens per lamp, 1.2 s/mh, Test no. LTL9610										
	From 0°	cp. Lumens	Zone Lumens %lamp	ρ f ρ c ρ w	80% 50% 30%	20% 70% 30%	50% 50% 30%	50% beam angle 61.3°	10% beam angle 90.1°	
	0°	1435	0°-30° 1136.6 23.7	1	47	46	46	45	44	44
	5°	1491	0°-40° 1695.5 35.3	2	43	41	43	41	41	40
	15°	1349	0°-60° 2045.0 42.6	3	40	38	39	37	38	36
	25°	1199	0°-90° 2058.0 42.9	4	37	34	36	34	35	33
	35°	850	90°-180° 0.0 0.0	5	34	31	34	31	33	30
	45°	420	0°-180° 2058.0 42.9*	6	31	29	31	28	30	28
	55°	41	*Efficiency	7	29	26	29	26	28	26
	65°	9		8	27	24	27	24	26	24
	75°	3		9	25	23	25	22	23	21
	85°	1		10	24	21	24	21	23	21
90°	0									
Mount height	Initial fc at beam center	Beam diameter	fc at beam edge	Beam diameter	fc at beam edge	Beam diameter	fc at beam edge	Beam diameter	fc at beam edge	
8'	47.4	6.5	23.7	11.0	4.7					
10'	25.5	8.9	12.8	15.0	2.6					
12'	15.9	11.3	8.0	19.0	1.6					
14'	10.9	13.6	5.4	23.0	1.1					
16'	7.9	16.0	3.9	27.0	0.8					

Distribution curve	Distribution data	Output data	Coefficient of utilization	Illuminance Data at 30" Above Floor for a Single Luminaire						
AF 2/42TRT 8CB, (2) CF42DT/E/IN/835, 3200 lumens per lamp, 1.2 s/mh, Test no. LTL9611										
	From 0°	cp. Lumens	Zone Lumens %lamp	ρ f ρ c ρ w	80% 50% 30%	20% 70% 30%	50% 50% 30%	50% beam angle 60.8°	10% beam angle 89.1°	
	0°	1671	0°-30° 1312.5 20.5	1	40	39	40	39	38	37
	5°	1678	0°-40° 1953.2 30.5	2	37	36	37	35	35	34
	15°	1553	0°-60° 2338.7 36.5	3	34	32	34	32	33	31
	25°	1461	0°-90° 2352.7 36.8	4	32	29	31	29	30	29
	35°	1025	90°-180° 0.0 0.0	5	29	27	29	27	28	26
	45°	435	0°-180° 2352.7 36.8*	6	27	25	27	24	26	24
	55°	47	*Efficiency	7	25	23	25	23	24	22
	65°	10		8	23	21	23	21	23	21
	75°	4		9	22	19	22	19	21	19
	85°	0		10	20	18	20	18	20	18
90°	0									
Mount height	Initial fc at beam center	Beam diameter	fc at beam edge	Beam diameter	fc at beam edge	Beam diameter	fc at beam edge	Beam diameter	fc at beam edge	
8'	55.2	6.5	27.6	10.8	5.5					
10'	29.7	8.8	14.9	14.8	3.0					
12'	18.5	11.2	9.3	18.7	1.9					
14'	12.6	13.5	6.3	22.6	1.3					
16'	9.2	15.9	4.6	26.6	0.9					

NOTES:
 1. For electrical characteristics, consult Technical Bulletins tab.
 2. Tested to current IES and NEMA standards under stabilized laboratory conditions. Various operating factors can cause differences between laboratory data and actual field measurements. Dimensions and specifications are based on the most current available data and are subject to change without notice.
 3. Actual performance may differ as a result of end-user environment and application.