

FEATURES

OPTICAL SYSTEM

- Self-flanged, semi-specular or matte-diffuse reflector. Patented Bounding Ray™ Optical Principle design (U.S. Patent No. 5,800,050) provides lamp image and smooth transition from top of the reflector to bottom. Minimum flange matches reflector finish.

MECHANICAL SYSTEM

- 16-gauge galvanized steel mounting/plaster frame with integral yoke to retain optical system. Maximum 2-1/4" ceiling thickness.
- 16-gauge galvanized steel mounting bars with continuous 4" vertical adjustment are shipped pre-installed. Post-installation adjustment possible without the use of tools from above or below ceiling.
- Galvanized steel junction box with hinged access covers and spring latches. Two combination 1/2"-3/4" and three 1/2" knockouts for straight-through conduit runs. Capacity: 8 (4 in, 4 out) No. 12 AWG conductors, rated for 90°C.

ELECTRICAL SYSTEM

- Horizontally mounted, positive-latch, thermoplastic sockets.
- Class P, thermally protected high-power-factor ballast(s) mounted to the junction box.
- Simply5™ technology available.

LISTING

- Fixtures are UL listed for thru-branch wiring, non-IC recessed mounting and damp locations. Listed and labeled to comply with Canadian standards.

WARRANTY

- One-year limited warranty. Full warranty terms located at www.acuitybrands.com/CustomerResources/Terms_and_conditions.aspx

Type

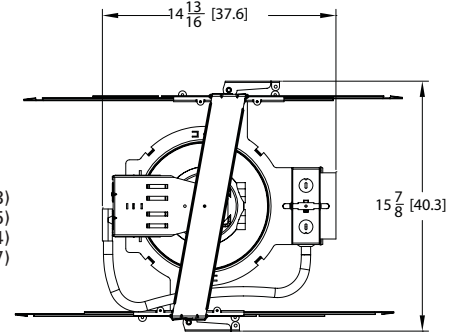
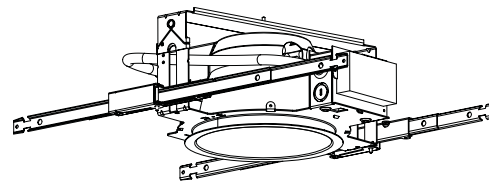
Catalog number

Compact Fluorescent Downlights

8" AF

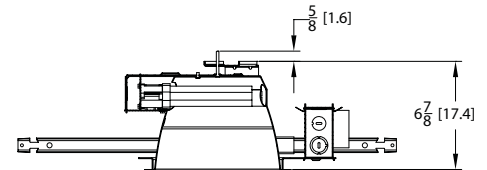
Lensed

Horizontal Lamp
Double Twin-Tube



Aperture: 8 (20.3)
Ceiling opening: 8-7/8 (22.5)
Overlap trim: 9-1/4 (23.4)
Lens recess: 2-5/8 (6.7)

All dimensions are inches (centimeters).



ORDERING INFORMATION

Choose the boldface catalog nomenclature that best suits your needs and write it on the appropriate line. Order accessories as separate catalog numbers (shipped separately).

AF

| Series | Wattage/Lamp | Aperture/Trim color | Finish | Voltage | Ballast ³ | Options |
|-----------|----------------|--|---|--------------------------|--|---|
| AF | 1/13DTT | 8AR Clear | (blank) Semi-specular | MVOLT² | (blank) Electronic ballast | DS Dual switching |
| | 2/13DTT | 8PR Pewter | LD Matte-diffuse | 120 | ECOS^{2,4} Lutron EcoSystem® electronic dimming ballast. Minimum dimming level 5% | ELR⁷ Emergency battery pack. Remote test switch provided |
| | 1/18DTT | 8WTR Wheat | | 277 | ADEZ^{4,5} Advance Mark 10® electronic dimming ballast. Minimum dimming level 5% | ELRHL⁷ High lumen output emergency battery pack. Remote test switch provided |
| | 2/18DTT | 8WR¹ White painted | | 347 | ADZT^{4,5} Advance Mark 7® electronic dimming ballast. Minimum dimming level 5% | GMF⁵ Single slow-blow fuse |
| | 1/26DTT | 8BC¹ Black cone | | | S5⁶ SIMPLY5™ dimming system. Minimum dimming level 15% | GLR⁵ Single fast-blow fuse |
| | 2/26DTT | 8MB¹ Black baffle 8WB¹ White baffle | | | | TRW White painted flange. Standard on MB and WB |
| | | | Lens type | | | WLP With 3500 K lamp (shipped separately) |
| | | | CGL Clear glass lens | | | LRC⁸ Provides compatibility with Lithonia Reloc® System. Lithonia Reloc System can be installed less option with connectors provided by others. Access above ceiling required |
| | | | PCL Clear polycarbonate lens | | | HW Hardwire for S5 system; replaces Reloc |
| | | | T73 Tempered prismatic lens | | | GSKT Foam gasketing |
| | | | PPC Prismatic polycarbonate lens | | | CP⁹ Chicago plenum |
| | | | FOL Flat opal lens | | | BDP¹⁰ Ballast disconnect plug |
| | | | | | | WL Wet location |
| | | | | | | NSD¹¹ Sensor Switch nLight™ dimming relay |
| | | | | | | WRL¹² Wattage restriction label |

Example: **AF 2/18DTT 8AR CGL MVOLT WLP**

NOTES

- Not available with finishes.
- Multi-volt electronic ballast capable of operating on any voltage from 120V through 277V, 50 or 60 Hz.
- For additional ballast types, refer to TECH-250.
- Not available with 13DTT.
- Available in 120V or 277V only.
- SIMPLY5™ includes 9' S5 MLC Reloc wiring system (shipped separately). Available in 120V or 277V only. Available in 26W only. See simply5.net for more information.
- For dimensional changes, refer to TECH-140.
- For compatible Reloc systems, refer to TECH-110.
- Not available with emergency options.
- Meets codes that require in-fixture disconnect.
- One 5A relay with one 0-10 VDC dimming output, shipped installed. Requires additional nLight bus power supply (nPS80).
- Must specify wattage. Ex.: WRL32

Accessories

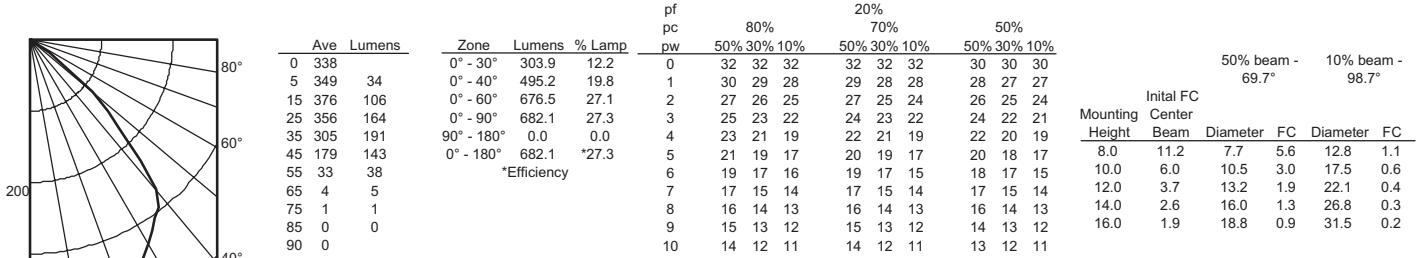
Order as separate catalog number.

SCA8 Sloped ceiling adapter. Degree of slope must be specified (10D, 15D, 20D, 25D, 30D). Ex: **SCA8 10D**

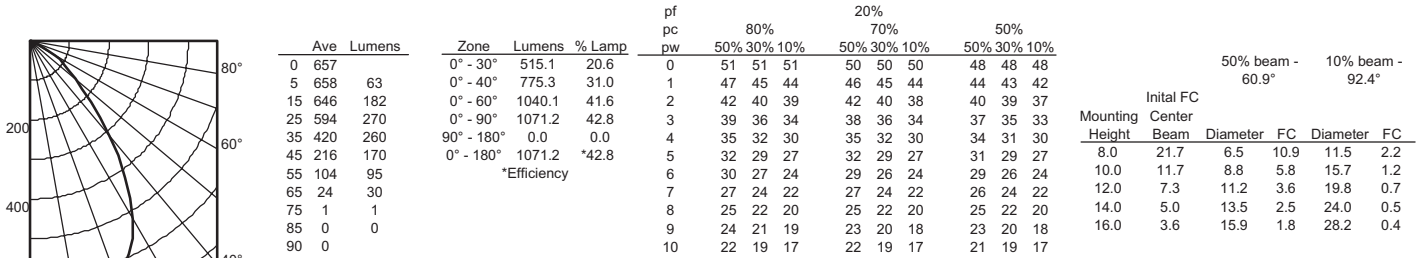
8" AF Lensed

Distribution curve Distribution data Output data Coefficient of utilization Illuminance Data at 30" Above Floor for a Single Luminaire

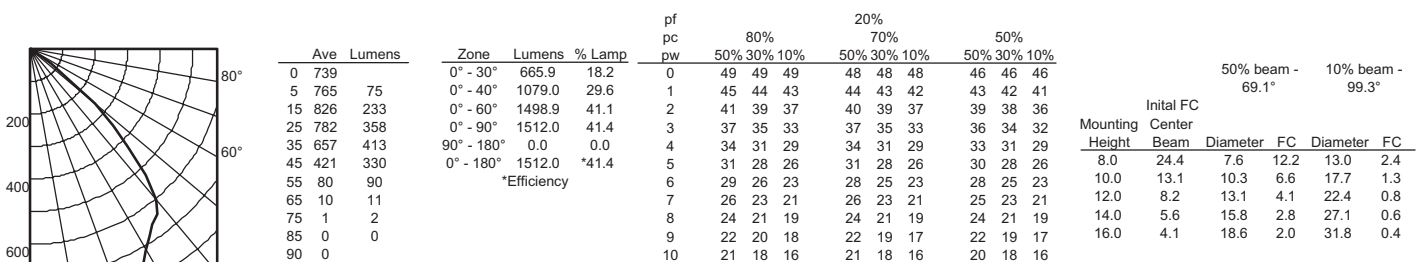
AF 2/18DTT 8AR CGL, (2) CF18DD/E/835 lamps, 2500 total rated lumens, Test No. LTL10618



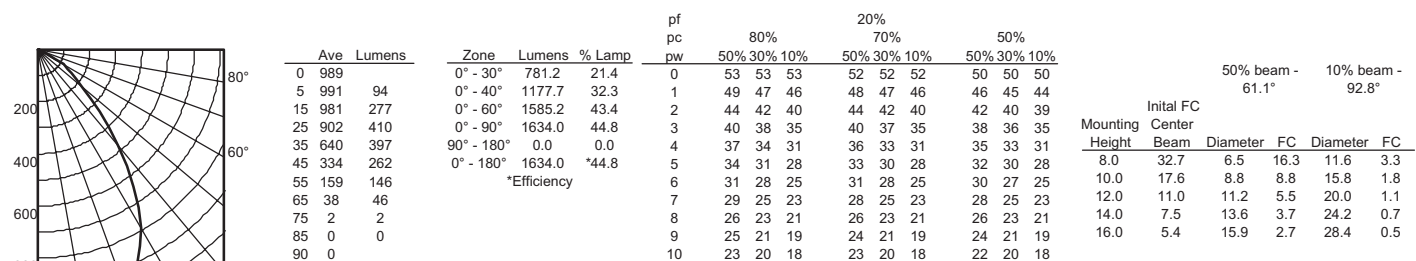
AF 2/18DTT 8AR T73, (2) CF18DD/E/835 lamps, 2500 total rated lumens, Test No. LTL10974



AF 2/26DTT 8AR CGL, (2) CF26DD/E/835 lamps, 3600 total rated lumens, Test No. LTL10617



AF 2/26DTT 8AR T73, (2) CF26DD/E/835 lamps, 3600 rated lumens, Test No. LTL10945



NOTES:
 1. For electrical characteristics consult Technical Bulletins tab.
 2. Tested to current IES and NEMA standards under stabilized laboratory conditions. Various operating factors can cause differences between laboratory data and actual field measurements. Dimensions and specifications are based on the most current available data and are subject to change without notice.
 3. Actual performance may differ as a result of end-user environment and application.