

FEATURES

OPTICAL SYSTEM

- Self-flanged, semi-specular or matte-diffuse reflector. Fluted vertical upper section works in conjunction with patented Bounding Ray™ Optical Principle to provide lamp before lamp image and smooth transition from top of reflector to bottom. Minimum flange matches reflector finish. White painted flange optional.
- Baffle/cone: Specular clear upper reflector. Microgroove baffle with white painted flange or specular black cone with flange that matches cone finish.
- Hinged lampdoor seals upper trim for optimal fixture efficiency and the reduction of stray light in the plenum.

MECHANICAL

- 16-gauge galvanized steel mounting/plaster frame with integral yoke to retain optical system. Maximum 2-1/4" ceiling thickness.
- 16-gauge galvanized steel mounting bars with continuous 4" vertical adjustment are shipped pre-installed. Post-installation adjustment possible without the use of tools from above or below the ceiling.
- Galvanized steel junction box with bottom-hinged access covers and spring latches. Two combination 1/2"-3/4" and three 1/2" knockouts for straight-through conduit runs. Capacity: 8 (4 in, 4 out) No. 12 AWG conductors, rated for 90°C.

ELECTRICAL SYSTEM

- Horizontally mounted, four-pin, positive-latch, thermoplastic socket(s).
- Class P, thermally protected high-power-factor electronic ballast(s) mounted to the junction box (CP and EL ballast mounted on ballast tray).
- Simply5™ technology available.

LISTING

- Fixtures are UL listed for thru-branch wiring, recessed mounting and damp locations. Listed and labeled to comply with Canadian standards (see Options).

WARRANTY

- One-year limited warranty. Full warranty terms located at www.acuitybrands.com/CustomerResources/Terms_and_conditions.aspx

Type

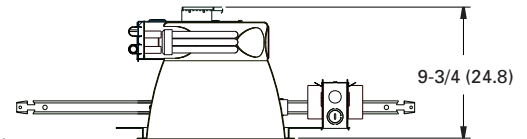
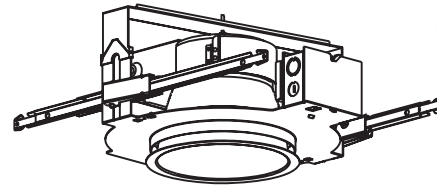
Catalog number

Compact Fluorescent Lighting

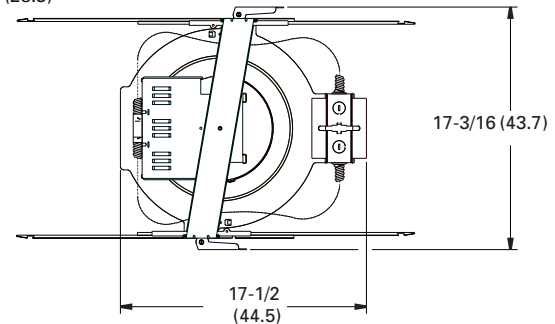
10" AF

Open Reflector

Horizontal Lamp
Triple-Tube



Aperture: 9-3/4 (24.8)
Ceiling Opening: 10-1/2 (26.7)
Overlap Trim: 11-1/8 (28.3)



All dimensions are inches (centimeters).

ORDERING INFORMATION

Choose the boldface catalog nomenclature that best suits your needs and write it on the appropriate line. Order accessories as separate catalog numbers (shipped separately).

Example: **AF 3/42TRT 10AR MVOLT**

AF

Series	Wattage/Lamp	Aperture/Trim color	Finish	Voltage	Ballast	Options	
AF	1/18TRT	2/32TRT	10AR Clear	(blank)	MVOLT ² 120 277 347	WLP With 3500 K lamp (shipped separately) TRW White painted flange EL ⁶ Emergency battery pack. Integral test switch provided ELR ⁶ Emergency battery pack. Remote test switch provided GMF ⁴ Single, slow-blow fuse RIF Radio interference filter LRC ⁷ Provides compatibility with Lithonia Reloc [®] System. Lithonia Reloc System can be installed less this option with connectors provided by others. Access above ceiling required HW Hardwire for S5 system; replaces Reloc QDS ⁸ Quick disconnect for easy ballast replacement CP ⁸ Chicago plenum (consult factory) NSD ⁹ Sensor Switch nLight™ dimming relay WRL ¹⁰ Wattage restriction label	
	1/26TRT	2/42TRT	10PR Pewter	(blank) Semi-specular			ECOS ^{2,3} EcoSystem [®] electronic dimming ballast. Minimum dimming level 5%
	1/32TRT	2/57TRT	10WTR Wheat	LD Matte-diffuse			ADEZ ⁴ Advance Mark 10 [®] electronic dimming ballast. Minimum dimming level 5%
	1/42TRT	3/18TRT	10WR ¹ White painted		ADZT ⁴ Advance Mark 7 [®] electronic dimming ballast. Minimum dimming level 5%		
	1/57TRT	3/26TRT	10MB ¹ Black baffle		S5 ⁵ SIMPY5™ ballast system. Minimum dimming level 15%		
	2/18TRT	3/32TRT	10BC ¹ Black cone				
	2/26TRT	3/42TRT					

NOTES:

- 1 Not available with finishes.
- 2 Multi-volt electronic ballast capable of operating on any line voltage from 120 through 277V, 50 or 60Hz.
- 3 Not available with 57W.
- 4 Available in 120V or 277V only.
- 5 Simply5™ includes 9' S5 MLC Reloc wiring system (shipped separately). Available in 120V or 277V only. Not available with 18W. See simply5.net for more information.
- 6 For dimensional changes, refer to TECH-140.
- 7 For compatible Reloc systems, refer to TECH-110.
- 8 Not available with emergency options.
- 9 One 5A relay with one 0-10 VDC dimming output, shipped installed. Requires additional nLight bus power supply (nPS80).
- 10 Must specify wattage. Ex.: WRL32

Accessories

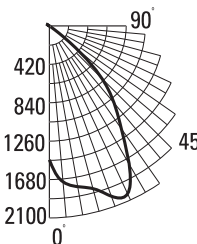
Order as separate catalog number.

SCA10 Sloped ceiling adapter. degree of slope must be specified (10D, 15D, 20D, 25D, 30D). Ex: SCA10 10D

10" AF Open Reflector

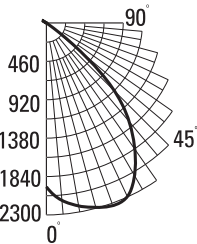
Distribution curve Distribution data Output data Coefficient of utilization Illuminance Data at 30" Above Floor for a Single Luminaire

AF 2/32TRT 10AR, (2) CF32DT/E/IN/835, 2400 lumens per lamp, 1.5 s/mh, Test no. LTL9444



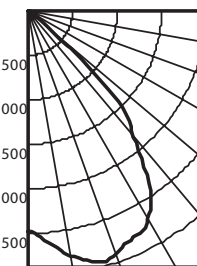
From 0°	cp.	Lumens	Zone	Lumens	%lamp	pf	80%		20%		50% beam angle 70.8°	10% beam angle 94.8°
							pc	pw	50%	30%		
0°	1464		0°-30°	1505.0	31.4	1	68	66	67	65	64	63
5°	1713	161	0°-40°	2350.1	49.0	2	62	59	61	59	59	57
15°	1841	525	0°-60°	2967.9	61.8	3	57	54	56	53	55	52
25°	2025	819	0°-90°	2974.5	62.0	4	53	49	52	48	50	47
35°	1372	845	90°-180°	0.0	0.0	5	48	44	48	44	47	43
45°	813	555	0°-180°	2974.5	62.0*	6	45	40	44	40	43	39
55°	26	62	*Efficiency			7	41	37	41	37	40	36
65°	4	5				8	38	34	38	34	37	33
75°	1	2				9	35	31	35	31	34	31
85°	0	0				10	33	29	33	29	32	29
90°	0											

AF 2/42TRT 10AR, (2) CF42DT/E/IN/835, 3200 lumens per lamp, 1.5 s/mh, Test no. LTL9443



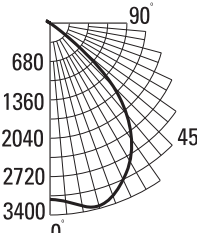
From 0°	cp.	Lumens	Zone	Lumens	%lamp	pf	80%		20%		50% beam angle 71.5°	10% beam angle 94.6°
							pc	pw	50%	30%		
0°	1963		0°-30°	1990.2	31.1	1	68	66	67	65	64	63
5°	2134	214	0°-40°	3156.7	49.3	2	63	60	61	59	59	57
15°	2288	696	0°-60°	3969.6	62.0	3	57	54	56	53	55	52
25°	2294	1080	0°-90°	3976.7	62.1	4	53	49	52	48	51	47
35°	1845	1166	90°-180°	0.0	0.0	5	48	44	48	44	47	43
45°	1156	734	0°-180°	3976.7	62.1*	6	45	40	44	40	43	40
55°	32	79	*Efficiency			7	41	37	41	37	40	36
65°	3	5				8	38	34	38	34	37	33
75°	2	2				9	35	31	35	31	35	31
85°	0	0				10	33	29	33	29	32	29
90°	0											

AF 2/57TRT 10AR, (2) CF57DT/E/IN/835, 4300 lumens per lamp, 1.4 s/mh, Test no. LTL10443



From 0°	Ave	Lumens	Zone	Lumens	% Lamp	pf	80%		20%		50% beam angle 71.2°	10% beam angle 95.0°
							pc	pw	50%	30%		
0°	2471		0°-30°	2376.8	27.6	1	.62	.61	.61	.60	.59	.58
5°	2611	256	0°-40°	3826.3	44.5	2	.57	.55	.56	.54	.54	.52
15°	2922	823	0°-60°	4887.7	56.8	3	.52	.49	.52	.49	.50	.47
25°	2811	1298	0°-90°	4893.3	56.9	4	.48	.44	.47	.44	.46	.43
35°	2363	1449	90°-180°	0.0	0.0	5	.44	.40	.44	.40	.42	.39
45°	1440	957	0°-180°	4893.3	56.9	6	.41	.37	.40	.36	.39	.36
55°	75	104	*Efficiency			7	.38	.34	.37	.33	.36	.33
65°	5	5				8	.35	.31	.34	.31	.34	.30
75°	1	1				9	.32	.28	.32	.28	.31	.28
85°	0	0				10	.30	.26	.30	.26	.29	.26
90°	0											

AF 3/42TRT 10AR, (3) CF42DT/E/IN/835, 3200 lumens per lamp, 1.4 s/mh, Test no. LTL9441



From 0°	cp.	Lumens	Zone	Lumens	%lamp	pf	80%		20%		50% beam angle 67.3°	10% beam angle 93.3°
							pc	pw	50%	30%		
0°	3124		0°-30°	2703.6	28.2	1	61	59	60	58	57	56
5°	3169	301	0°-40°	4267.8	44.5	2	56	53	55	53	53	51
15°	3352	940	0°-60°	5320.7	55.4	3	51	48	51	48	49	47
25°	3061	1463	0°-90°	5329.8	55.5	4	47	44	47	43	45	42
35°	2513	1564	90°-180°	0.0	0.0	5	43	40	43	39	42	39
45°	1578	956	0°-180°	5329.8	55.5*	6	40	36	40	36	39	36
55°	45	97	*Efficiency			7	37	33	37	33	36	33
65°	6	6				8	34	31	34	30	33	30
75°	2	2				9	32	28	32	28	31	28
85°	0	0				10	30	26	29	26	29	26
90°	0											

ENERGY

LER.DOL	Annual Energy Cost	Lamps	Lamp Lumens	Ballast Factor	Input Watts
43	\$5.55	2/42TRT	6400	.98	90

Calculated in accordance with NEMA standard LE-5.

NOTES:

- For electrical characteristics, refer to Technical Bulletins tab.
- Tested to current IES and NEMA standards under stabilized laboratory conditions. Various operating factors can cause differences between laboratory data and actual field measurements. Dimensions and specifications are based on the most current available data and are subject to change without notice.
- Consult factory or IES file for microgroove baffle, black cone and other photometric reports.
- Actual performance may differ as a result of end-user environment and application.

DCF-250

©2007, 2011 Acuity Brands Lighting, Inc.
All Rights Reserved. Rev. 12/11
Specifications subject to change without notice.



An Acuity Brands Company

GOTHAM ARCHITECTURAL DOWNLIGHTING
1400 Lester Road Conyers Georgia 30012
P 800 315 4982 F 770 860 3129
www.gothamlighting.com