



Gotham Architectural Downlighting
LED Downlights



6" Incito Cylinder

Solid-State Lighting
(US and International Patents Pending)

FEATURES

INTENDED USE

- Achieve the lowest installed power density and operating costs while achieving every layer of light via the optimized general illumination distributions from the EVO family, and the high centerbeam accent layers from the highly flexible Incito family. The EVO and Incito families maintain consistent luminous apertures, dimming characteristics, and color quality to ensure the blending of families in common spaces renders an unparalleled, tailored visual experience.

OPTICAL SYSTEM

- Self-flanged, specular, semi-specular or matte-diffuse lower reflector in combination with highly transmissive lens provides unparalleled performance and efficiency.
- Patented Bounding Ray™ Optical Principle design (U.S. Patent No. 5,800,050) provides smooth and continuous transition from lensed source to the top of the reflector down to the bottom of the reflector.

HOUSING

- Heavy-gauge aluminum housing with top deck for clean appearance. Provided with safety chain on ceiling and pendant units, allowing hands-free wiring connections. Textured polyester powder paint finish.

MOUNTING

- Ceiling mount provided with mounting pattern for direct installation to 4" octagonal or square junction box.
- Wall mount provided with mounting pattern for direct installation to 4" octagonal or square junction box.
- EDXB driver includes a 3-foot DMX signal cable when ordered with FCM, WM, or WMWL mounting option. Fixture includes 10-foot DMX signal cable when ordered with PM, PMWL, or ACC mounting option.

- Pendant-mount entry provided for 3/8" National Pipe Thread stem. Additional pendant options available (see Accessories). Pendant-mount includes 10 feet of line voltage wires.

ELECTRICAL SYSTEM

- Solid-state LED light engine available in 2700 K, 3000 K, 3500 K or 4000 K color temperatures. CRI: 85 typical.
- eldoLED ecoDrive 0-10V driver available with 10% dimming level.
- eldoLED ecoDrive 0-10V driver available with 1% dimming level.
- eldoLED SOLOdrive 0-10V driver available with <1% dimming level.
- eldoLED SOLOdrive DALI driver available with <1% dimming level.
- eldoLED POWERdrive DMX with RDM (remote device management) available with <1% dimming level.
- Rated system life of 60,000 hours at >70% output.
- Tested in accordance with LM-79 and LM-80 standards.

LISTINGS

- Fixtures are CSA certified to meet US and Canadian standards. Series suitable for damp locations. Ceiling mount suitable for wet locations, covered ceiling. Pendant and wall mount wet location available as option.

BUY AMERICAN ACT

- This product is assembled in the USA and meets the Buy America(n) government procurement requirements under FAR, DFARS and DOT regulations. Please refer to www.acuitybrands.com/buy-american for additional information.

WARRANTY

- 5-year limited warranty. Complete warranty terms located at: www.acuitybrands.com/CustomResources/Terms_and_conditions.aspx

Note: Actual performance may differ as a result of end user environment and application. All values are design or typical values, measured under laboratory conditions at 25 °C.

ORDERING INFORMATION

EXAMPLE: IC0 CYL 30/60 6AR LSS 20D 120 EZB FCM DWHG

Series	Color temperature	Nominal lumen values ¹				Aperture/Trim color		Finish	Beam				Voltage	
IC0 CYL	27/ 2700 K	20	2000 lumens	55	5500 lumens	6AR	Clear	LSS	Semi-specular	20D	20° beam angle	45D	45° beam angle	MVOLT 120 277
	30/ 3000 K	25	2500 lumens	60	6000 lumens	6PR	Pewter			25D	25° beam angle	55D	55° beam angle	
	35/ 3500 K	30	3000 lumens	65	6500 lumens	6WTR	Wheat	LD	Matte diffuse	30D	30° beam angle	60D	60° beam angle	
	40/ 4000 K	35	3500 lumens	70	7000 lumens	6GR	Gold			35D	35° beam angle	65D	65° beam angle	
		40	4000 lumens	75	7500 lumens	6WR ²	White	40D	40° beam angle	70D	70° beam angle			
		45	4500 lumens	80	8000 lumens	6BR ²	Black							
		50	5000 lumens	85	8500 lumens									

Driver	Mounting	Options
EZ10 eldoLED 0-10V ECOdrive. Linear dimming to 10% min.	FCM Ceiling mount WM³ Wall mount	NPS80EZ⁶ nLight® dimming pack controls 0-10V eldoLED drivers.
EZ1 eldoLED 0-10V ECOdrive. Linear dimming to 1% min.	WMWL³ Wall mount, wet location	NPS80EZ ER^{6,7} nLight® dimming pack controls 0-10V eldoLED drivers. ER controls fixtures on emergency circuit.
EZB eldoLED 0-10V SOLOdrive. Logarithmic dimming to <1%.	PM⁴ Pendant 3/8" thread mount	RRL__ RELOC®-ready luminaire connectors enable a simple and consistent factory installed option across all ABL luminaire brands. Refer to RRL for complete nomenclature. Available only in RRLA, RRLB, RRLAE, and RRLC12S.
EDAB eldoLED SOLOdrive DALI. Logarithmic dimming to <1%.	PMWL⁴ Pendant 3/8" thread mount, wet location	CR190 High CRI (90+)
EDXB eldoLED POWERdrive DMX with RDM (remote device management). Square Law dimming to <1%. Includes termination resistor. Refer to DMXR Manual .	ACC⁵ 10ft aircraft cable and cord mount ACC180⁵ 15ft aircraft cable and cord mount	Architectural Colors - Powder Paint⁸ DWHG Matte white DDB Dark bronze DBL Black DWH Gloss white DMB Medium bronze DNA Natural aluminum DSS Sandstone DGC Charcoal grey DTC Tennis green DBR Bright red DSB Steel blue

6" INCITO CYLINDER

Open Cylinder
Solid-State Lighting



ORDERING INFORMATION

ORDERING NOTES

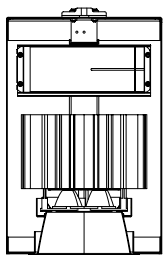
- Nominal downlight lumens.
- Not available with finishes.
- Access panel (supplied by others) recommended for use with nLight®.
- Must specify stem and canopy. See Accessories.
- White cord with white housings. All others black cord.
- Interface remote mounted.
- For use with generator supply EM power. Will require an emergency hot feed and normal hot feed.
- Additional architectural colors available; see www.lithonia.com/archcolors.
- Color and length of stem must be specified (from 6" to 240" in even increments in maximum sections of 48"). Ex.: CYS06 DWHG. Ceiling attachment for interior use. Consult factory for exterior use. Wires supplied by others.
- Transformer must be field-installed to an accessible remote-mounted junction box.

ACCESSORIES order as separate catalog numbers (shipped separately)

CYS⁹	3/8" stem and canopy with 5° "hang straight" swivel	CRSX⁹	3/8" stem and canopy with 45° swivel. Use this nomenclature when ordering EDXB driver.
CRS⁹	3/8" stem and canopy with 45° swivel	SDT 347/277/120 395VA AD¹⁰	347V Step-down transformer. Max 5000LM.
CYSX⁹	3/8" stem and canopy with 5° "hang straight" swivel. Use this nomenclature when ordering EDXB driver.		

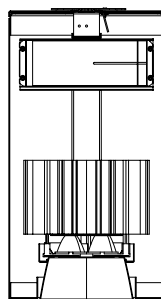
DIMENSIONAL DATA

All dimensions are inches (centimeters) unless otherwise noted.



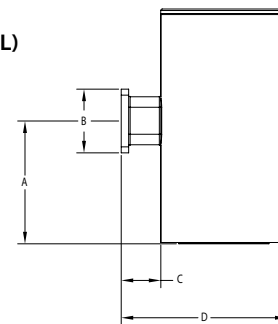
- Aircraft Cable (ACC)
- Pendant Mount (PM)
- Wall Mount (WM)

Aperture: 6-1/4 [15.8]
Housing Diameter: 10-1/2 [26.7]
Housing Height: 16-1/16 [40.8]
Damp Location Listed



- Ceiling Mount (FCM)
- Pendant Mount Wet Location (PMWL)
- Wall Mount Wet Location (WMWL)

Aperture: 6-1/4 [15.8]
Housing Diameter: 10-1/2 [26.7]
Housing Height: 19-1/2 [49.6]
Wet Location Listed



Wall Mount Side View

A = 9-3/8 (23.8)
B = 5-5/16 (13.5)
C = 3-1/4 (8.3)
D = 13-3/4 (34.9)

ELECTRICAL

WATTAGE CONSUMPTION MATRIX

LUMENS	BEAM ANGLES									
	20	25	30	35	40	45	55	60	65	70
8500	95.5	95.5	95.5	95.5	95.5	108.7	108.7	108.7	108.7	108.7
8000	91	91	91	91	91	99.8	99.8	99.8	99.8	99.8
7500	82.3	82.3	82.3	82.3	82.3	95.5	95.5	95.5	95.5	95.5
7000	73.6	73.6	73.6	73.6	73.6	86.7	86.7	86.7	86.7	86.7
6500	69.3	69.3	69.3	69.3	69.3	82.3	82.3	82.3	82.3	82.3
6000	60.9	60.9	60.9	60.9	60.9	73.6	73.6	73.6	73.6	73.6
5500	56.9	56.9	56.9	56.9	56.9	65.1	65.1	65.1	65.1	65.1
5000	48.3	48.3	48.3	48.3	48.3	60.9	60.9	60.9	60.9	60.9
4500	44.2	44.2	44.2	44.2	44.2	52.5	52.5	52.5	52.5	52.5
4000	40.2	40.2	40.2	40.2	40.2	43.4	43.4	43.4	43.4	43.4
3500	34	34	34	34	34	37	37	37	37	37
3000	28.4	28.4	28.4	28.4	28.4	31	31	31	31	31
2500	26.3	26.3	26.3	26.3	26.3	28.4	28.4	28.4	28.4	28.4
2000	26.3	26.3	26.3	26.3	26.3	26.3	26.3	26.3	26.3	26.3

CRI/CCT Multiplier Table

CRI	CCT	Multiplier
80	2700K	0.94
	3000K	0.97
	3500K	1.00
	4000K	1.02
90	2700K	0.79
	3000K	0.82
	3500K	0.85
	4000K	0.87

A+ Capable Luminaire

This item is an A+ capable luminaire, which has been designed and tested to provide consistent color appearance and out-of-the-box control capability with simple commissioning when used with Acuity Brands controls products.

All configurations of this luminaire are calibrated and tested to meet the Acuity Brands' specification for chromatic consistency - including color rendering, color fidelity and color temperature tolerance around standard CIE chromaticity coordinates.

To learn more about A+, visit www.acuitybrands.com/aplus.



nLight® AIR is the ideal solution for retrofit or new construction spaces where adding communication wiring is cost prohibitive. The integrated nLight AIR rPP20 Power Pack is part of each EVO Luminaire ordered with the NLTAIR option. These individually addressable controls offer the ultimate in flexibility during initial setup and for space repurposing.

nLight® AIR Control Accessories

Order as separate catalog number. Visit [nLight AIR](#).

Wall Switches	Model Number
On/Off single pole	rPODB (color) G2
On/Off two pole	rPODB 2P (color) G2
On/Off & raise/lower single pole	rPODB DX (color) G2
On/Off & raise/lower two pole	rPODB 2P DX (color) G2

nLight® AIR Control Accessories (cont.)

Occupancy Sensors (PIR/dual tech)	Model Number
Small motion 360°, ceiling	rCMS 9 / rCMS PDT 9
Large motion 360°, ceiling	rCMS 10 / rCMS PDT 10

UL924 Sequence of Operation

The below information applies to all nLight AIR devices with an EM option.

- EM devices will remain at their high-end trim and ignore wireless lighting control commands, unless a normal-power-sensed (NPS) broadcast is received at least every 8 seconds.
- Using the CLAIRITY+ mobile app, EM devices must be associated with a group that includes a normal power sensing device to receive NPS broadcasts.
- Only non-emergency rPP20, rLSXR, rSBOR, rSDGR, and nLight AIR luminaires with version 3.4 or later firmware can provide normal power sensing for EM devices. See specification sheets for control devices and luminaires for more information on options that support normal power sensing.

nLight® Wired The nLight® solution is a digital networked lighting control system that provides both energy savings and increased user configurability by cost effectively integrating time-based, daylight-based, sensor-based and manual lighting control schemes.

nLight® Wired Control Accessories

Order as separate catalog number. Visit [nLight](#).

Wall Switches	Model Number
On/Off single pole	nPODM (color)
On/Off two pole	nPODM 2P (color)
On/Off & raise/lower single pole	nPOD DX (color)
On/Off & raise/lower two pole	nPODM 2P DX (color)
Graphic touchscreen	nPOD GFX (color)

Photocell Controls

Dimming	nCM ADCX
---------	----------

nLight® Wired Control Accessories (cont.)

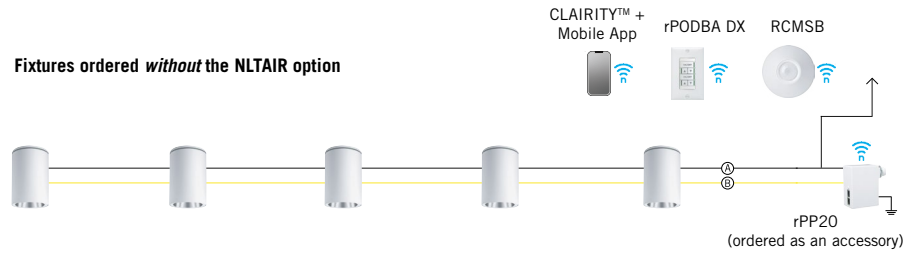
Occupancy Sensors (PIR/dual tech)	Model Number
Small motion 360°, ceiling	nCM 9 / nCM PDT 9
Large motion 360°, ceiling	nCM 10 / nCM PDT 10
Wide View	nWV 16 / nWV PDT 16
Wall switch with raise/lower	nWSX LV DX / nWSX PDT LV DX

Cat-5 Cables (plenum rated)

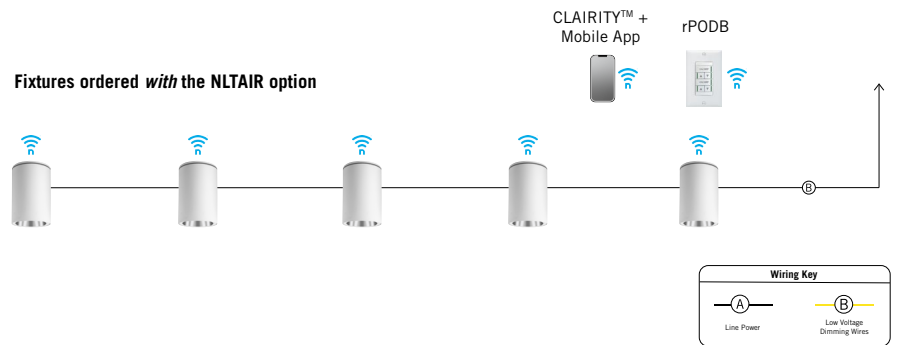
10', CAT5	CAT5 10FT J1
15', CAT5	CAT5 15FT J1

Possibilities for nLight® AIR

Fixtures ordered without the NLTAIR option



Fixtures ordered with the NLTAIR option



Possibilities for nLight® wired

Fixtures ordered without the NLT option



Fixtures ordered with the NLT option

