

FEATURES

OPTICAL SYSTEM

- Microgroove black baffle with white painted flange or specular, semi-diffuse or highly specular cone with flange that matches cone finish (downlight only). White painted flange optional.

HOUSING

- Heavy gauge, rolled and welded aluminum housing with no visible seam. Matte white textured polyester powder paint finish standard.

MOUNTING

- Standard wall mount provided with mounting pattern for direct installation to 4" square or octagonal junction box.

ELECTRICAL SYSTEM

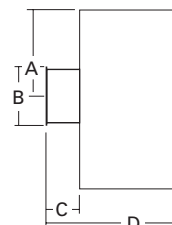
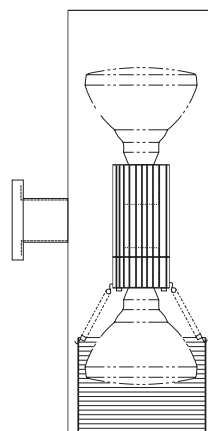
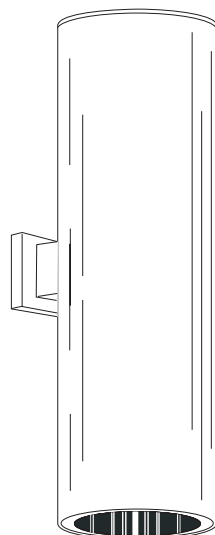
- Heavy duty medium base porcelain socket with nickel plated screw shell.
- Heat dissipating, extruded aluminum socket housing.

LISTING

- Fixtures are UL listed for damp locations. Listed and labeled to comply with Canadian standards.

Type Catalog number

.....



Incandescent Cylinders

8" CWU

Cylinders

Up/Down Wall Mounted
 PAR38, R40 Lamp

- A = 12-3/4 (32.4)
- B = 5-1/8 (13.0)
- C = 3-1/4 (8.3)
- D = 11-5/8 (29.5)

Wall Mount Dimensions

- Aperture: 7-1/4 (18.4)
- Housing Diameter: 8-3/8 (21.3)
- Housing Height: 25-1/2 (64.8)

All dimensions are inches (centimeters)

ORDERING INFORMATION

Example: **CWU8A AC DWHG**

Choose the boldface catalog nomenclature that best suits your needs and write it on the appropriate line.

CWU8A				
Series ¹		Color/trim type	Finish	Options
CWU8A	Wall Mount	AC Clear	(blank) Semi-Specular	TRW White painted flange
		BLC Black	LD Matte diffuse	Housing Paint Finish
		PC Pewter	LS Specular	DWHG Matte White (standard)
		UBC Umber		DDB Dark Bronze
		WTC Wheat		DBL Black
		CC Champagne gold		DNA Natural Aluminum
		GC Gold		DWH Gloss White
		MB² Black baffle		DTG Tennis Green
				DGC Charcoal Gray
				DSS Sandstone

NOTES

- 1 Maximum wattages: Q250W PAR38; 300W R40.
- 2 Not available with finishes.

8" CWU Up/Down Wall Mount

Distribution curve

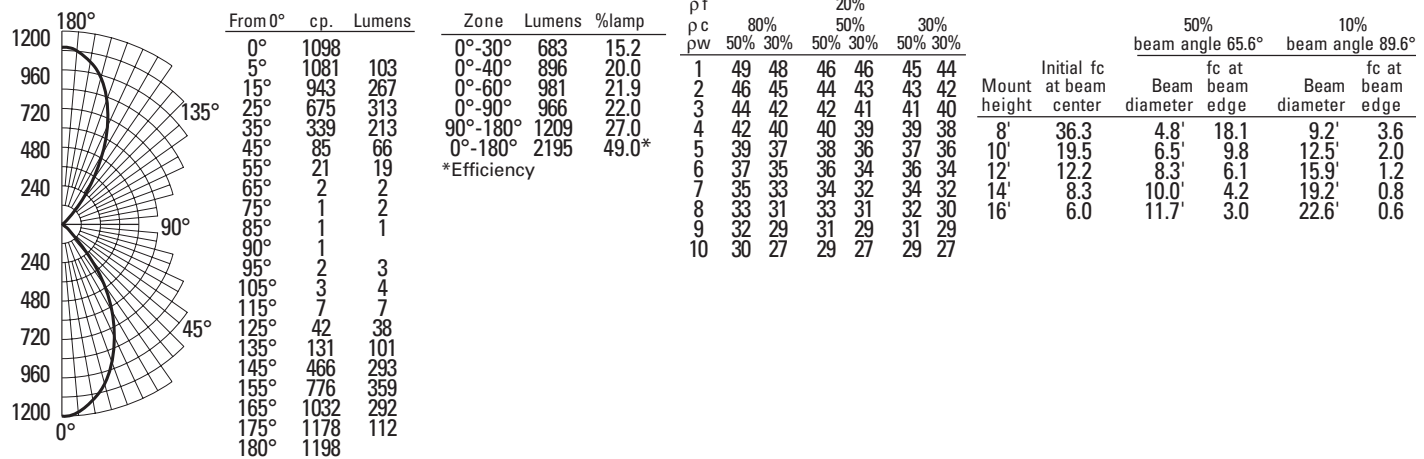
Distribution data

Output data

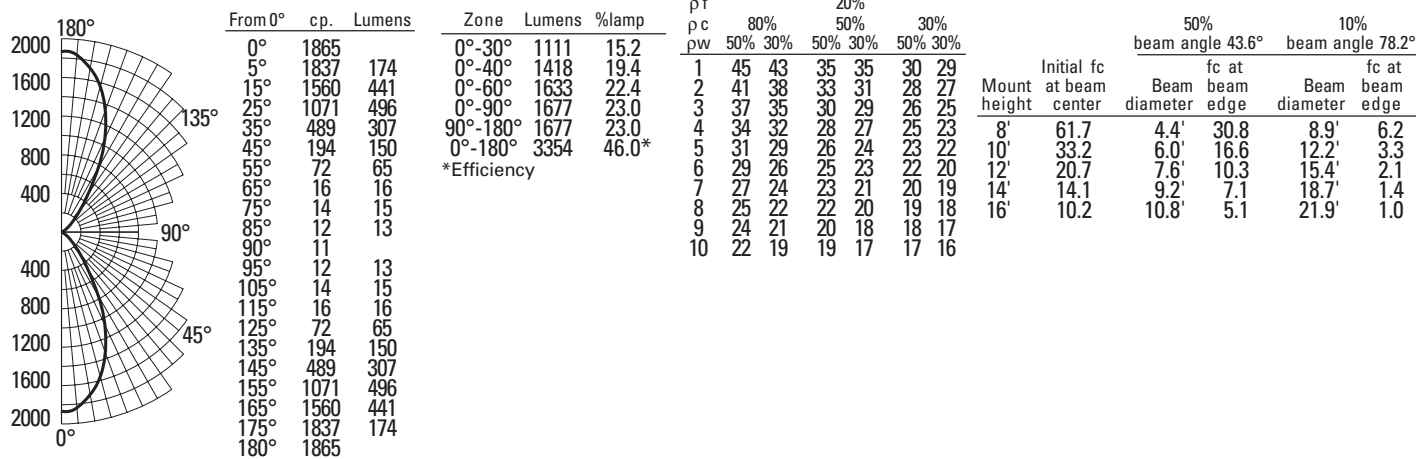
Coefficient of utilization

Single luminaire data 30" above floor

CWU8A MB, 200W R40/FL lamp, 0.9 s/mh, 2240 rated lumens, Test no. LTL16071



CWU8A MB, 300W R40/FL lamp, 0.8 s/mh, 3650 rated lumens, Test No. LTL16072



NOTES:

1. For electrical characteristics, refer to Technical Bulletins tab.
2. Tested to current IES and NEMA standards under stabilized laboratory conditions. Various operating factors can cause differences between laboratory data and actual field measurements. Dimensions and specifications are based on the most current available data and are subject to change without notice.

SINC-200

©2007 Gotham, Rev. 07/07
SINC-200

gotham
An Acuity Brands Company

GOTHAM ARCHITECTURAL DOWNLIGHTING
A DIVISION OF ACUITY LIGHTING GROUP, INC.
1400 Lester Road Conyers Georgia 30012
P 800 315 4982 F 770 860 3129
www.gothamlighting.com