



PETROLUX® LED


HOLOPHANE®
LEADER IN LIGHTING SOLUTIONS

experience
lighting's
best.



PETROLUX® LED

HOLOPHANE BRINGS MORE THAN A CENTURY OF EXPERIENCE TO THE LIGHTING INDUSTRY, OFFERING ENERGY EFFICIENT, COST EFFECTIVE SOLUTIONS FOR A EVERY INDUSTRIAL ENVIRONMENT IMAGINABLE. GOOD LIGHTING GOES BEYOND SUPPLYING SUFFICIENT ILLUMINATION LEVELS. QUALITY LIGHTING SOLUTIONS PROVIDE USABLE ILLUMINATION WITHOUT SHADOWS AND GLARE TO MEET END USERS' SPECIFIC NEEDS FOR COMFORT, SECURITY AND THE LOWEST COST OF OWNERSHIP.

Today, Holophane embarks upon a new path to provide our customers with even better long term performance benefits. We have combined solid state lighting technology with a keen knowledge of market requirements and a core competency in product leadership to deliver a truly phenomenal value proposition in the Petrolux LED. Excellence in optical design along with a robust thermal management system provides a solution that delivers great value. This benefit translates into energy reduction and reduced maintenance over the life of the product.



NEW LED OPTICAL DESIGN



Thermal Management
The robust outer aluminum housing, available in multiple finishes, is designed to protect the internal components from harsh environments and provide a path for convection and conduction for optimized performance.



Optical Design
This highly engineered light engine delivers superior uniformity and control, providing light only where it is needed.



Universal Mount
Designed to accommodate most mounting needs with one SKU, reducing a complex fixture schedule and simplifying inventory management.

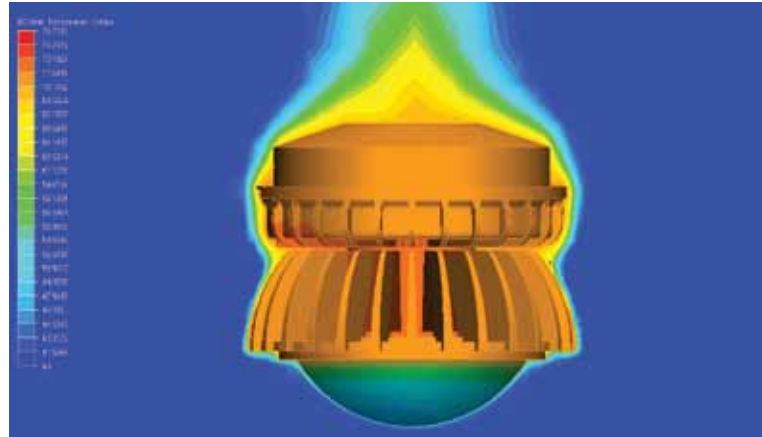


Marine and IP Rated
Petrolux LED is totally sealed and is marine and IP66 rated.

THERMAL MANAGEMENT

A significant amount of the energy produced by the LED is heat. With LED technology, thermal management becomes essential for maintenance free life and lumen output. This new version of the Petrolux family is designed with a dedicated heat sink. The precise number of fins, the size of the surface area and the form of the light engine have a quick heat dissipation rate which improves the reliability and extends the useful life of the luminaire.

The result of efficiently transferring the thermal energy created by the light engine is an astounding minimum of 70,000 hours of maintenance free operation in a 55°C ambient attaining 70 percent of the lumen output.



APPLICATION EFFICACY

In demanding environments such as utility power plants, water treatment and industrial processing facilities, one must strongly consider and address the total visual environment. Adequate levels of vertical illumination are essential to assimilating important information quicker such as reading caution and hazard signs, identifying gauges and dials pertinent to the production and safety of the facility and even driving equipment such as forklifts through the space. Proper vertical illuminance results in enhanced visibility conditions of the application.

The example to the right illustrates applied lumens vertically comparing the Holophane Petrolux LED luminaire to a competing LED industrial luminaire with a very similar lumen package.

PERFORMANCE SPECIFICATIONS

Housing

All castings shall be low copper aluminum alloy and painted with polyester powder paint (standard finish). The top cover shall be secured to the electrical housing with stainless steel hardware including a stainless steel insert. No water shall enter the fixture when exposed to a solid stream of water as specified by IEC per IP-X6 standards. The luminaire shall have passed a dust chamber test as specified by IEC per IP-6X standards.

The luminaire gasketing shall be of a silicone type tested to withstand the harsh environments found in hazardous areas. The fixture shall be designed to prevent any permanent distortion of the gasket assuring the sealing integrity of the electrical and optical housing after accelerated aging.

Universal Mount

Luminaire shall provide single mounting option which allows for Pendant, Wall, Stanchion and Ceiling mountings when used in conjunction with the universal arm accessory.

VERTICAL ILLUMINATION

In environments such as parking garages, one must strongly consider and address the total visual environment. Adequate levels of vertical illumination are essential to assimilating important information quicker. Drivers must be able to safely maneuver a car and pedestrians must be able to see oncoming traffic and between vehicles. Proper vertical illumination will result in the adequate visibility to achieve those tasks.

Optical Assembly

The refractor shall be made of Endural® borosilicate glass with precise optics. The luminaire shall include an optical assembly composed of a reflector, LED board set and refractor, providing a _____ (long and narrow, symmetric) light distribution. The optical system shall provide visual comfort while maximizing efficiency and uniformity of illumination.

The optic shall provide minimal dirt depreciation and will not discolor or become brittle over time, resulting in more maintained lumens on the intended space. Optional CCT average color temperature LED's ranging between 4000-6000K are available. LED light engine protected from elements by glass optics. An optimized maintained thermal management system is achieved by combining a robust heat sink utilizing both convection and conduction methodology with a mechanical design that promotes maximum airflow ensuring that a minimum of 70,000 hours L70 at 55°C operating ambient. The range for the luminaire operation is -40°C to +55°C.

All enclosures shall be Type 4X approved and provide IP66 ingress protection. The luminaire is designed to meet UL1598 and UL1598A up to 55°C.

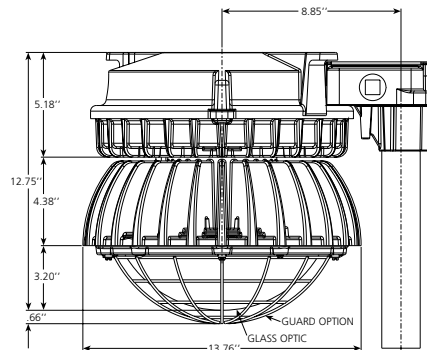
ORDERING INFORMATION

PREFERRED SELECTIONS:

Most Frequently Ordered Catalog Numbers

PLED	98	35	5K	AS	UN	NA	W	L5	40°C	GD
1	2	3	4	5	6	7	8	9	10	11
LUMINAIRE	LED's	DRIVE CURRENT	COLOR TEMP.	VOLTAGE	MOUNTING	CORD LENGTH	HOUSING COLOR	OPTICS	MAX TEMP.	OPTIONS
PLED	98 70	35	5K	AS	UN PD GH	NA 06	W	L5H	40°C 55°C	GD

DIMENSIONAL DETAILS



Petrolux LED
Maximum weight: 45lbs

CATALOG NUMBERS FOR ENTIRE PRODUCT OFFERING

(Pricing and lead times may be affected)



STEP 1: LUMINAIRE			
PLED	Petrolux LED (Wet version)		
STEP 2: QUANTITY OF LED'S			
98¹	98	70	70
¹ Only available with L5 and L5H optics			
STEP 3: DRIVE CURRENT			
35	350mA driver		
STEP 4: COLOR TEMPERATURE			
4K	4000K CCT+/-250		
5K	5000K CCT+/-250		
STEP 5: VOLTAGE			
AS	Auto sensing (120-277V)		
12	120V		
20	208V		
24	240V		
27	277V		
AH¹	Auto sensing (347-480V)		
34¹	347V		
48¹	480V		
¹ Available 40°C max ambient temperature only			
STEP 6: MOUNTING			
CE¹	Ceiling	ST¹	Stanchion
GH²	Gasketed Hook	UN¹	Universal
PD¹	Pendant	WL¹	Wall)
¹ Must specify NA, Step 7			
² Available 12, 20, 24, 27 voltage only. Must specify 03, 06, 10, Step 7			

STEP 7: CORD LENGTH	
03¹	3ft. cord & Watertite Plug® assembly
06¹	6ft. cord & Watertite Plug® assembly
10¹	10ft. cord & Watertite Plug® assembly
NA²	No cord
¹ Available GH mounting only. Available 12, 20, 24, 27 voltage only.	
² Not available GH mounting.	

STEP 8: HOUSING COLOR	
G	Gray
W	White
CR-G	Corrosion resistant, gray
CR-W	Corrosion resistant, white
<i>*Colors are just a representation. Custom colors are available upon request.</i>	

STEP 9: OPTICS	
L1	Long and narrow, glass
L5	Type 5, low angle, glass
L5H	Type 5, high angle, glass

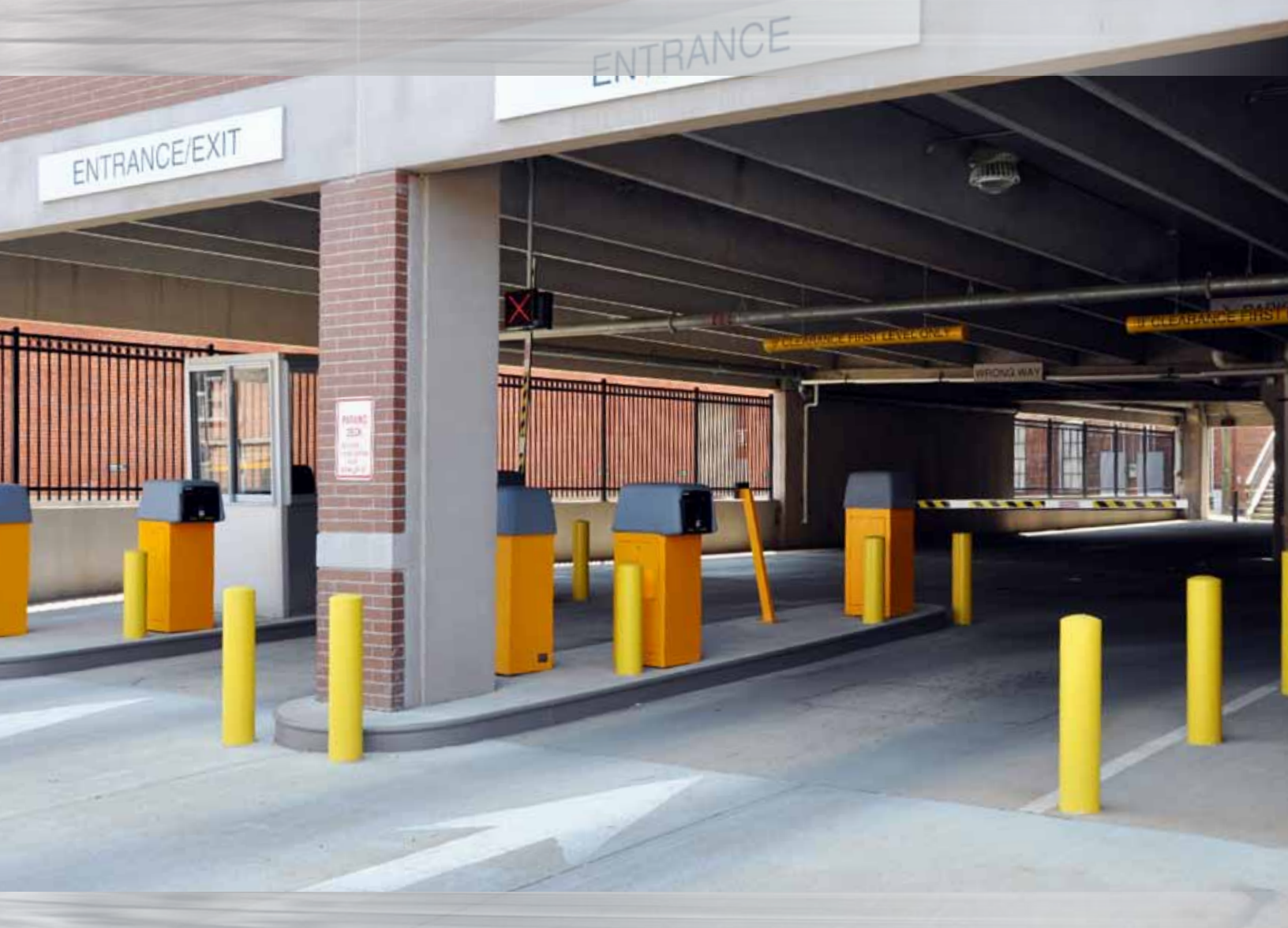
STEP 10: MAX AMBIENT TEMP.	
40°C	Maximum 40°C operating ambient temperature
55°C	Maximum 55°C operating ambient temperature

STEP 11: OPTIONS	
BP^{1,2,3}	Button style photocontrol
DM¹	0-10V dimming
EG	Ingress/egress marker decal
EL³	Extended driver life
F1	Single fusing
F2	Double fusing
GD	Optic guard
OS³	Occupancy sensor
SH⁴	Uplight shield
SP	Sample pack for ground transport

¹ Available 12, 20, 24, 27, 34 voltage codes.
² Not available CE mounting.
³ Available 40°C max ambient temp only. Not available AS voltage code. Not available SH option. Available 12, 20, 24, 27, AS voltage codes.
⁴ Available L5 optic only. Not available with OS option.

STEP 12: ACCESSORIES	
09189-*SUB¹	Safety chain kit
PLEDGD	Optic guard
P3US-GR²	Universal mount arm, gray
P3US-CRW²	Universal mount arm, corrosion resistant white
P3US-WH²	Universal mount arm, white
P3US-CRG²	Universal mount arm, corrosion resistant gray

¹ 2, 3, 4, 5, 6, 7, 8, 10, 12, 15 feet of chain
² Must order UN mounting



HOLOPHANE[®]
LEADER IN LIGHTING SOLUTIONS

An **AcuityBrands** Company

Acuity Brands Lighting, Inc.

Holophane Headquarters, 3825 Columbus Road,
Granville, OH 43023

Holophane Canada, Inc. 9040 Leslie Street,
Suite 208, Richmond Hill, ON L4B 3M4

Holophane Europe Limited, Bond Ave.,
Milton Keynes MK1 1JG, England

Holophane, S.A. de C.V., Apartado Postal No.
986, Naucalpan de Juarez, 53000 Edo. de Mexico

Contact your local Holophane factory sales representative for application assistance, and computer-aided design and cost studies. For information on other Holophane products and systems, call the Inside Sales Service Department at 866-759-1577. In Canada call 905-707-5830 or fax 905-707-5695.

Limited Warranty and Limitation of Liability

Refer to the Holophane limited material warranty and limitation of liability on this product, which are published in the "Terms and Conditions" section of the current Indoor Buyers Guide (HL-2140), and is available from your local Holophane sales representative.

Visit our web site at www.holophane.com

Luminaires may utilize fluorescent or high intensity discharge sources that contain small amounts of mercury. New disposal labeling for these lamps includes the mercury identifier shown on the left to indicate that the lamp contains mercury and should be disposed of in accordance with local requirements.



Information sources regarding lamp recycling and disposal are included on the packaging of most mercury-containing lamps and also can be located at www.lamprecycle.org.

Product specifications may change without notice. Please contact your local Holophane factory sales representative for the latest product information.