



TRAC-MASTER®

Avant Garde

DIE CAST GIMBAL RING PAR LAMPHOLDERS

T1020, T1030, T1031S and T1038



Project: _____

Fixture Type: _____

Location: _____

Contact/Phone: _____

PRODUCT DESCRIPTION

The Die Cast Gimbal Ring fixture series offers premium construction features and extensive lamp flexibility. The narrow, arched yoke minimizes the fixture mass and gives it a fresh, modern appearance. It is designed to accommodate halogen PAR lamps as well as the latest technology LED lamps. Its robust design is mostly open, allowing air circulation which enables LED lamps to operate as cool as possible. The E26 versions have a high wattage and low wattage labeling option to further facilitate energy code compliance. The Die Cast Gimbal Ring fixture series has a front-loading design making lamp changes a breeze. Each fixture possesses a tri-lobe locking knob to prevent the fixture from "drooping" over time due to lamp weight and to enable the fixture aiming to be locked in place, even during lamp changes.



PRODUCT SPECIFICATIONS

Construction Die cast aluminum housing and die-formed steel yoke • Tri-lobe aiming lock knob to secure fixture aiming.

Socket E26 medium base porcelain with nickel plated copper screw shell.

Juno Universal Trac Adapter Universally compatible with both Trac-Master 1-circuit or 2-circuit trac, Trac-Lites trac, monopoints and special mountings • Also UL Recognized for use on ConTech® LT Series track • Copper alloy contacts provide precise spring action – no arcing and will not take a set • True, positive electrical ground • On /off switch included • Patented embossed polarity arrows on bottom of adapter • Spring-loaded positive latch with embossed polarity arrows secures trac light to trac • Two-position power contact provided for two-circuit application.

Alternate TEK Trac Adapter Compatible with Juno TEK trac system • System specific and assembled to trac fixture • Integrally polarized construction to prevent reverse installation – only allows insertion in proper orientation • Rotary circuit selector enables simple switching between circuits • Integral on/off switch enables individual fixtures to be switched for servicing.

Alternate GTYPE Trac Adapter Compatible with track systems based on GES type track, including Lithonia LT Commercial Track (not LTS type) • System specific and assembled to trac fixture • Consult factory for additional information.

Alternate HTYPE Trac Adapter Compatible with track systems which use a H-type track adapter, including Lithonia LTS Decorative Track (not LT type) • System specific and assembled to trac fixture • Two-position power contact provided for two-circuit application • Consult factory for additional information.

Alternate LTYPE Trac Adapter Compatible with track systems which use a L-type track adapter • System specific and assembled to trac fixture • Two-position power contact provided for two-circuit application • Consult factory for additional information.

Accessories Fixtures can accommodate up to two accessories using Accessory Ring.

Aiming 90° vertical aiming capability and 358° rotation.

Government Procurement

BAA – Buy America(n) Act: Product qualifies as a domestic end product under the Buy American Act as implemented in the FAR and DFARS. Product also qualifies as manufactured in the United States under DOT Buy America regulations.

BABA – Build America Buy America: Product qualifies as produced in the United States under the definitions of the Build America, Buy America Act.

Please refer to www.acuitybrands.com/buy-american for additional information.

Labels UL and C-UL Listed • E26 versions have choice of wattage rating labels to facilitate energy code compliance • Union made • Assembled in U.S.A.

Note: Actual performance may differ as a result of end-user environment and application. Specifications subject to change without notice.

ConTech is a registered trademark of ConTech Lighting.



One Lithonia Way • Conyers, GA 30012 • Phone 1-800-705-SERV (7378) • Visit us at www.acuitybrands.com
Printed in U.S.A. © 2017-2024 Acuity Brands Lighting, Inc. Rev. 05/14/24

TRAC-MASTER®

Avant Garde

DIE CAST GIMBAL RING PAR LAMP HOLDERS

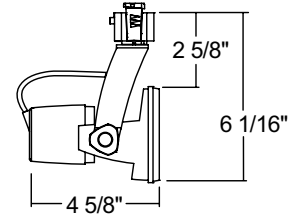
T1020, T1030, T1031S and T1038

ORDERING INFORMATION

Ordering Examples: T1020 E26 10W WH, T1020 TEK E26 50W BL

Lamp 50W max. PAR20 lamp.

Series	Mounting Adapter	Lamp Type	Wattage Rating	Finish	
T1020 PAR20 Gimbal Ring	(Blank)	Universal 120V Trac Adapter	E26 Edison Screw-In Base	10W 10W Max. 50W 50W Max. (E26 Lamp Type only)	BL Black SL Silver WH White
	TEK ¹	TEK 120V Trac Adapter			
	GTYPE	G-Type Trac Adapter			
	HTYPE	H-Type Trac Adapter			
	LTYPE	L-Type Trac Adapter			



Accessories
T40N ² Monopoint Canopy

See specification sheet [D1.2.2](#) for details.

Other accessories can be found on specification sheet [D1.2.0](#).

Notes:

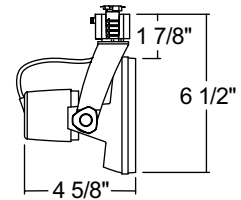
- 1 TEK not compatible with T40N.
- 2 Add finish code to complete catalog number (Example: T40N WH).

ORDERING INFORMATION

Ordering Examples: T1031S E26 18W WH, T1031S TEK E26 75W BL

Lamp 75W max. PAR30S short-neck lamp.

Series	Mounting Adapter	Lamp Type	Wattage Rating	Finish	
T1031S PAR30S Gimbal Ring	(Blank)	Universal 120V Trac Adapter	E26 Edison Screw-In Base	18W 18W Max. 75W 75W Max. (E26 Lamp Type only)	BL Black SL Silver WH White
	TEK ¹	TEK 120V Trac Adapter			
	GTYPE	G-Type Trac Adapter			
	HTYPE	H-Type Trac Adapter			
	LTYPE	L-Type Trac Adapter			



Accessories					
TAH BLCK 469	Accessory Ring - Black	EYEBROWBL 469²	Eyebrow - Black	SOLITE 469²	Uniformity Lens
HCLBL 469²	Hexagonal Cell Louver - Black	CGF 469²	Color Glass Filters	PRISM 469²	Prismatic Spread Lens
CCLBL 469²	Cube Cell Louver - Black	DGF 469²	Dichroic Glass Filters	LSPREAD 469²	Linear Spread Lens
XBAFLBL 469²	Cross Baffle - Black	UVF 469²	UV Filter	T40N³	Monopoint Canopy
SNOOTBL 469²	Snoot - Black	DIFF 469²	Diffusion Lens		

See specification sheet [D1.2.2](#) for details.

Other accessories can be found on specification sheet [D1.2.0](#).

Notes:

- 1 TEK not compatible with T40N.
- 2 Filters, lenses and louver require Accessory Ring for installation.
- 3 Add finish code to complete catalog number (Example: T40N WH).

TRAC-MASTER®

Avant Garde

DIE CAST GIMBAL RING PAR LAMP HOLDERS

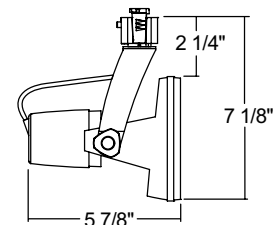
T1020, T1030, T1031S and T1038

ORDERING INFORMATION

Ordering Examples: T1030 E26 18W WH, T1030 TEK E26 75W BL

Lamp 75W max. PAR30L long-neck lamp.

Series	Mounting Adapter	Lamp Type	Wattage Rating	Finish	
T1030 PAR30L Gimbal Ring	(Blank)	Universal 120V Trac Adapter	E26 Edison Screw-In Base	18W 18W Max. 75W 75W Max. (E26 Lamp Type only)	BL Black
	TEK ¹	TEK 120V Trac Adapter			SL Silver
	GTYPE	G-Type Trac Adapter			WH White
	HTYPE	H-Type Trac Adapter			
	LTYPE	L-Type Trac Adapter			



Accessories

TAH BLCK 469	Accessory Ring - Black	EYEBROWBL 469 ²	Eyebrow - Black	SOLITE 469 ²	Uniformity Lens
HCLBL 469 ²	Hexagonal Cell Louver - Black	CGF 469 ²	Color Glass Filters	PRISM 469 ²	Prismatic Spread Lens
CCLBL 469 ²	Cube Cell Louver - Black	DGF 469 ²	Dichroic Glass Filters	LSPREAD 469 ²	Linear Spread Lens
XBAFLBL 469 ²	Cross Baffle - Black	UVF 469 ²	UV Filter	T40N ³	Monopoint Canopy
SNOOTBL 469 ²	Snoot - Black	DIFF 469 ²	Diffusion Lens		

See specification sheet [D1.2.2](#) for details.Other accessories can be found on specification sheet [D1.2.0](#).

Notes:

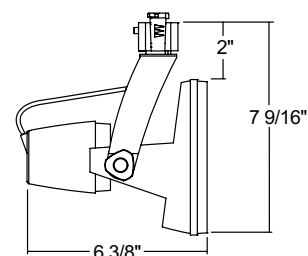
- TEK not compatible with T40N.
- Filters, lenses and louver require Accessory Ring for installation.
- Add finish code to complete catalog number (Example: T40N WH).

ORDERING INFORMATION

Ordering Examples: T1038 E26 25W WH, T1038 TEK E26 150W BL

Lamp 150W max. PAR38 lamp.

Series	Mounting Adapter	Lamp Type	Wattage Rating	Finish	
T1038 Gimbal Ring	(Blank)	Universal 120V Trac Adapter	E26 Edison Screw-In Base	25W 25W Max. 150W 150W Max. (E26 Lamp Type only)	BL Black
	TEK ¹	TEK 120V Trac Adapter			SL Silver
	GTYPE	G-Type Trac Adapter			WH White
	HTYPE	H-Type Trac Adapter			
	LTYPE	L-Type Trac Adapter			



Accessories

TAH BLCK 550	Accessory Ring - Black	CGF 550 ²	Color Glass Filters
CCLBL 550 ²	Cube Cell Louver - Black	T40N ³	Monopoint Canopy

See specification sheet [D1.2.2](#) for details.Other accessories can be found on specification sheet [D1.2.0](#).

Notes:

- TEK not compatible with T40N.
- Filters, lenses and louver require Accessory Ring for installation.
- Add finish code to complete catalog number (Example: T40N WH).