

JUNO[®]**TRAC-MASTER**[®]Avant Garde
STUDIO II**T291, T292, T293, T294 and T296**

Project: _____

Fixture Type: _____

Location: _____

Contact/Phone: _____

PRODUCT DESCRIPTION

Add theatrical styling to lighting applications. Striking finishes and innovative product details make the Studio II an important design element and an effective lighting product. T292 and T296 include barn doors for PAR30 and PAR38 lamps.

Construction Die formed aluminum housing with steel yokes and die formed steel ring.

Lampholder Low voltage uses ceramic bi-pin socket • Line voltage uses medium base porcelain socket with nickel plated copper screw shell.

Aiming 90° vertical aiming capability and 358° horizontal rotation • One locking knob provided on line voltage versions.

Juno Universal Trac Adapter Universally compatible with both Trac-Master 1-circuit or 2-circuit trac, Trac-Lites trac, monopoints and special mountings • Also UL Recognized for use on ConTech® LT Series track • Copper alloy contacts provide precise spring action - no arcing and will not take a set • True, positive electrical ground • On/off switch included • Patented embossed polarity arrows on bottom of adapter • Spring-loaded positive latch with embossed polarity arrows secures trac light to trac • Two-position power contact provided for two-circuit application.

Alternate TEK Trac Adapter Compatible with Juno TEK trac system • System specific and assembled to trac fixture • Integrally polarized construction to prevent reverse installation – only allows insertion in proper orientation • Rotary circuit selector enables simple switching between circuits • Integral on/off switch enables individual fixtures to be switched for servicing.

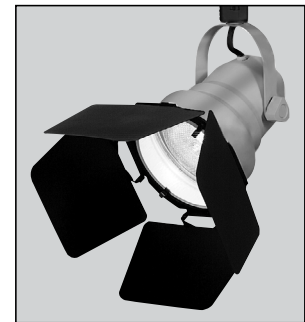
Alternate GTYPE Trac Adapter Compatible with track systems based on GES type track, including Lithonia LT Commercial Track (not LTS type) • System specific and assembled to trac fixture • Consult factory for additional information.

Alternate HTYPE Trac Adapter Compatible with track systems which use a H-type track adapter, including Lithonia LTS Decorative Track (not LT type) • System specific and assembled to trac fixture • Two-position power contact provided for two-circuit application • Consult factory for additional information.

Alternate LTYPE Trac Adapter Compatible with track systems which use a L-type track adapter • System specific and assembled to trac fixture • Two-position power contact provided for two-circuit application • Consult factory for additional information.

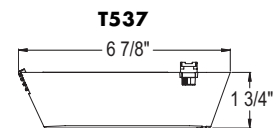
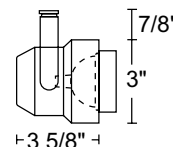
Labels UL listed • CSA certified • Union made • Assembled in U.S.A.

Specifications subject to change without notice.

**Low Voltage MR16 Studio II**

Transformer Must be ordered separately • Compatible with T537 universal 12V electronic transformer for LED or halogen lamps ([T537 T537QJ](#)).

Catalog Number	Description	Finish	Lamp
T291 WH	Studio II	White/Black Integral Accessory Ring	50W MR16 max.
T291 BL	Studio II	Black/Black Integral Accessory Ring	50W MR16 max.

**ACCESSORIES**

Cat. No.	Description	Cat. No.	Description
HCLBL 175	Hexagonal Cell Louver - Black	UVF 175	UV Filter
CGF 175	Color Glass Filter	SOLITE 175	Uniformity Lens (Solite)
DCCF 175	Dichroic Color Correction Filter	PRISM 175	Prismatic Spread Glass Lens
DGF 175	Dichroic Glass Filter	LSPREAD 175	Linear Spread Glass Lens
DIFF 175	Diffusion Glass Lens		

See specification sheet [D1.2.2](#) for details.

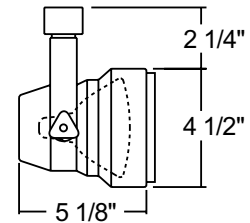
ConTech is a registered trademark of ConTech Lighting.

TRAC-MASTER®

Avant Garde

STUDIO II**T291, T292, T293, T294 and T296****Line Voltage PAR30**

Catalog Number	Description	Finish	Lamp
T293 WH	Studio II w/Universal Trac Adapter	White/Black Integral Accessory Ring	75W PAR30 max.
T293 BL	Studio II w/Universal Trac Adapter	Black/Black Integral Accessory Ring	75W PAR30 max.
T293 SL	Studio II w/Universal Trac Adapter	Silver/Black Integral Accessory Ring	75W PAR30 max.
T293 GTYPE WH	Studio II w/G-Type Trac Adapter	White/Black Integral Accessory Ring	75W PAR30 max.
T293 GTYPE BL	Studio II w/G-Type Trac Adapter	Black/Black Integral Accessory Ring	75W PAR30 max.
T293 GTYPE SL	Studio II w/H-Type Trac Adapter	Silver/Black Integral Accessory Ring	75W PAR30 max.
T293 HTYPE WH	Studio II w/H-Type Trac Adapter	White/Black Integral Accessory Ring	75W PAR30 max.
T293 HTYPE BL	Studio II w/H-Type Trac Adapter	Black/Black Integral Accessory Ring	75W PAR30 max.
T293 HTYPE SL	Studio II w/H-Type Trac Adapter	Silver/Black Integral Accessory Ring	75W PAR30 max.
T293 LTYPE WH	Studio II w/L-Type Trac Adapter	White/Black Integral Accessory Ring	75W PAR30 max.
T293 LTYPE BL	Studio II w/L-Type Trac Adapter	Black/Black Integral Accessory Ring	75W PAR30 max.
T293 LTYPE SL	Studio II w/L-Type Trac Adapter	Silver/Black Integral Accessory Ring	75W PAR30 max.

**ACCESSORIES**

Cat. No.	Description	Cat. No.	Description	Cat. No.	Description
HCLBL 375	Hexagonal Cell Louver - Black	DCCF 375	Dichroic Color Correction Filter	SOLITE 375	Uniformity Lens (Solite)
CCLBL 375	Cube Cell Louver - Black	DGF 375	Dichroic Glass Filter	PRISM 375	Prismatic Spread Glass Lens
SNOOTBL 375	Snoot - Black	DIFF 375	Diffusion Glass Lens	LSPREAD 375	Linear Spread Glass Lens
CGF 375	Color Glass Filter	UVF 375	UV Filter	T40N¹	Monopoint

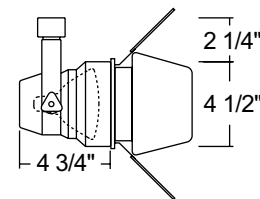
See specification sheet [D1.2.2](#) for details. Other accessories can be found on specification sheet [D1.2.0](#).

Notes:

1 Add finish code to complete catalog number (Example: T40N WH).

Line Voltage PAR30

Catalog Number	Description	Finish	Lamp
T292 BL	Studio II w/Universal Trac Adapter	Black/Black Integral Accessory Ring	75W PAR30 max.
T292 TEK BL	Studio II w/TEK Trac Adapter	Black/Black Integral Accessory Ring	75W PAR30 max.
T292 GTYPE BL	Studio II w/G-Type Trac Adapter	Black/Black Integral Accessory Ring	75W PAR30 max.
T292 HTYPE BL	Studio II w/H-Type Trac Adapter	Black/Black Integral Accessory Ring	75W PAR30 max.
T292 LTYPE BL	Studio II w/L-Type Trac Adapter	Black/Black Integral Accessory Ring	75W PAR30 max.

**ACCESSORIES**

Cat. No.	Description	Cat. No.	Description
HCLBL 469	Hexcell Louver - Black	DIFF 469	Diffusion Glass Lens
CCLBL 469	Cube Cell Louver - Black	UVF 469	UV Filter
SNOOTBL 469	Snoot - Black	SOLITE 469	Uniformity Lens (Solite)
CGF 469	Color Glass Filter	PRISM 469	Prismatic Spread Glass Lens
DCCF 469	Dichroic Color Correction Filter	LSPREAD 469	Linear Spread Glass Lens
DGF 469	Dichroic Glass Filter	T40N¹	Monopoint

See specification sheet [D1.2.2](#) for details. Other accessories can be found on specification sheet [D1.2.0](#).

Notes:

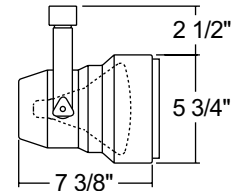
1 Add finish code to complete catalog number (Example: T40N WH).

TRAC-MASTER®

Avant Garde

STUDIO II**T291, T292, T293, T294 and T296****Line Voltage PAR38**

Catalog Number	Description	Finish	Lamp
T294 WH	Studio II w/Universal Trac Adapter	White/Black Integral Accessory Ring	150W PAR38 max.
T294 BL	Studio II w/Universal Trac Adapter	Black/Black Integral Accessory Ring	150W PAR38 max.
T294 TEK WH	Studio II w/TEK Trac Adapter	White/Black Integral Accessory Ring	150W PAR38 max.
T294 TEK BL	Studio II w/TEK Trac Adapter	Black/Black Integral Accessory Ring	150W PAR38 max.
T294 GTYPE WH	Studio II w/G-Type Trac Adapter	White/Black Integral Accessory Ring	150W PAR38 max.
T294 GTYPE BL	Studio II w/G-Type Trac Adapter	Black/Black Integral Accessory Ring	150W PAR38 max.
T294 HTYPE WH	Studio II w/H-Type Trac Adapter	White/Black Integral Accessory Ring	150W PAR38 max.
T294 HTYPE BL	Studio II w/H-Type Trac Adapter	Black/Black Integral Accessory Ring	150W PAR38 max.
T294 LTYPE WH	Studio II w/L-Type Trac Adapter	White/Black Integral Accessory Ring	150W PAR38 max.
T294 LTYPE BL	Studio II w/L-Type Trac Adapter	Black/Black Integral Accessory Ring	150W PAR38 max.

**ACCESSORIES**

Cat. No.	Description	Cat. No.	Description
HCLBL 469	Hexcell Louver - Black	DIFF 469	Diffusion Glass Lens
CCLBL 469	Cube Cell Louver - Black	UVF 469	UV Filter
SNOOTBL 469	Snoot - Black	SOLITE 469	Uniformity Lens (Solite)
CGF 469	Color Glass Filter	PRISM 469	Prismatic Spread Glass Lens
DCCF 469	Dichroic Color Correction Filter	LSPREAD 469	Linear Spread Glass Lens
DGF 469	Dichroic Glass Filter	T40N¹	Monopoint

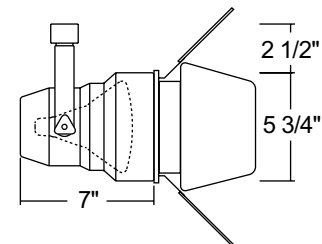
See specification sheet [D1.2.2](#) for details. Other accessories can be found on specification sheet [D1.2.0](#).

Notes:

¹ Add finish code to complete catalog number (Example: T40N WH).

Line Voltage PAR38

Catalog Number	Description	Finish	Lamp
T296 BL	Studio II w/Universal Trac Adapter	Black/Black Integral Accessory Ring	150W PAR38 max.
T296 TEK BL	Studio II w/TEK Trac Adapter	Black/Black Integral Accessory Ring	150W PAR38 max.
T296 GTYPE BL	Studio II w/G-Type Trac Adapter	Black/Black Integral Accessory Ring	150W PAR38 max.
T296 HTYPE BL	Studio II w/H-Type Trac Adapter	Black/Black Integral Accessory Ring	150W PAR38 max.
T296 LTYPE BL	Studio II w/L-Type Trac Adapter	Black/Black Integral Accessory Ring	150W PAR38 max.

**ACCESSORIES**

Cat. No.	Description	Cat. No.	Description
CGF 550	Color Glass Filter	T40N¹	Monopoint
CCLBL 550	Cube Cell Louver - Black		

See specification sheet [D1.2.2](#) for details. Other accessories can be found on specification sheet [D1.2.0](#).

Notes:

¹ Add finish code to complete catalog number (Example: T40N WH).