



TRAC 12/25, FLEX 12

Low Voltage Systems

COMPACT, LED-COMPATIBLE, 12V SURFACE MOUNT TRANSFORMERS

TF60

Project: _____

Fixture Type: _____

Location: _____

Contact/Phone: _____

PRODUCT DESCRIPTION

The TF60 Series Compact, LED-Compatible 12V Surface Mount Transformers are designed to power Flex 12 or Trac 12/25 trac when pendant stem suspended from a ceiling. Transformers are available in 60W, 100W or 150W versions in a variety of finishes. All are LED or halogen-compatible and dimmable.

PRODUCT SPECIFICATIONS

Construction Low profile housing – less than 2" overall height • Vented polycarbonate housing mounts to a 16 gauge galvanized steel universal mounting plate • Installs over standard 4" junction box • Accepts standard Juno pendant stem • Includes secondary wires to accommodate up to a 48" stem • White, black or silver finishes.

Electrical 120VAC input • Automatic resetting overload and short circuit protection • 60W & 100W versions have no minimum load restrictions • 150W requires 50W minimum load.

Dimming Dimmable using high quality reverse phase electronic low voltage (ELV) dimmers.

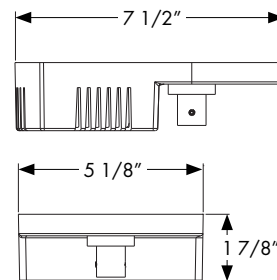
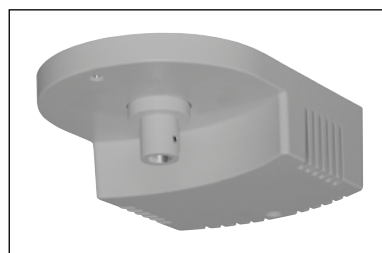
Trac 12/25 Installation Designed to be used with a Transformer Pendant Stem Kit (TLRSK) and Pendant End Feed Connector (TLR50) to support/feed one end of a Trac 12/25 trac run • Designed to work in conjunction with other Trac 12/25 pendant stem support components • One mounting point required every 4' maximum • 5' recommended maximum distance from trac • Consult Ordering & Specification Guidelines document for more information.

Flex 12 Installation Designed to be used with a Flex 12 Pendant Stem (TFPS) and Electrical Feed Cylinder (TF21) to support/feed a Flex 12 trac run • Designed to work in conjunction with other Flex 12 pendant stem support components • One mounting point required every 3' maximum • 5' recommended maximum distance from trac • Consult Ordering & Specification Guidelines document for more information.

Labels ETL Listed for use in the U.S. (UL 2108) and Canada (CSA C22.2 No. 9).

Specifications subject to change without notice.

DIMENSIONS



PRODUCT CODES

Catalog Number	Wattage	Finish	Description
TF60 60W STEM BL	60W	Black	60W Pendant Stem Mount Transformer
TF60 60W STEM SL	60W	Silver	60W Pendant Stem Mount Transformer
TF60 60W STEM WH	60W	White	60W Pendant Stem Mount Transformer
TF60 100W STEM BL	100W	Black	100W Pendant Stem Mount Transformer
TF60 100W STEM SL	100W	Silver	100W Pendant Stem Mount Transformer
TF60 100W STEM WH	100W	White	100W Pendant Stem Mount Transformer
TF60 150W STEM BL	150W	Black	150W Pendant Stem Mount Transformer
TF60 150W STEM SL	150W	Silver	150W Pendant Stem Mount Transformer
TF60 150W STEM WH	150W	White	150W Pendant Stem Mount Transformer

TRAC 12/25 PENDANT STEM KITS

Catalog Number	Description
TLRSK 12IN	12" Trac 12/25 Pendant Stem Kit
TLRSK 18IN	18" Trac 12/25 Pendant Stem Kit
TLRSK 24IN	24" Trac 12/25 Pendant Stem Kit
TLRSK 36IN	36" Trac 12/25 Pendant Stem Kit
TLRSK 48IN	48" Trac 12/25 Pendant Stem Kit

Add finish code suffix to above to complete catalog number
(Example: TLRSK-12IN-BL).

FLEX 12 PENDANT STEM

Catalog Number	Description
TFPS 3IN SL	3-1/2" Flex 12 Pendant Stem
TFPS 12IN SL	12" Flex 12 Pendant Stem
TFPS 18IN SL	18" Flex 12 Pendant Stem
TFPS 24IN SL	24" Flex 12 Pendant Stem
TFPS 36IN SL	36" Flex 12 Pendant Stem
TFPS 48IN SL	48" Flex 12 Pendant Stem

TRAC 12/25, FLEX 12

Low Voltage Systems

COMPACT, LED-COMPATIBLE, 12V SURFACE MOUNT TRANSFORMERS

TF60

PRODUCT DESCRIPTION

The TF60 Series Compact 12V Surface Mount Transformers are designed to power Flex 12 trac when a low profile, close-to-the-mounting-surface installation is desired. Transformers are available in 60W, 100W or 150W versions in a variety of finishes. All are LED or halogen-compatible and dimmable.

PRODUCT SPECIFICATIONS

Construction Low profile housing – less than 2" overall height • Vented polycarbonate housing mounts to a 16 gauge galvanized steel universal mounting plate • Installs over standard 4" junction box • Includes low profile mounting hardware which is dimensionally compatible with Flex 12 TF32 Low Profile Mechanical Mini-Support Cylinders • White, black or silver finish housing with integral silver finish support hardware.

Electrical 120VAC input • Automatic resetting overload and short circuit protection • 60W & 100W versions have no minimum load restrictions • 150W requires 50W minimum load.

Dimming Dimmable using high quality reverse phase electronic low voltage (ELV) dimmers.

Flex 12 Installation Designed to work in conjunction with TF32 Low Profile Mechanical Mini-Support Cylinders for required mechanical support • Enables Flex 12 to be mounted within 2-1/8" of mounting surface • One mounting point required every 3' maximum • Consult Ordering & Specification Guidelines document for more information.

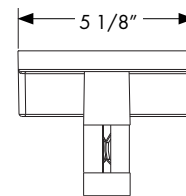
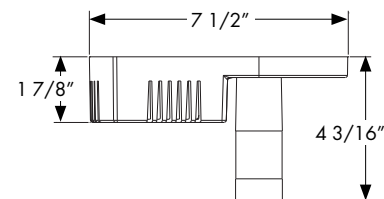
Labels ETL Listed for use in the U.S. (UL 2108) and Canada (CSA C22.2 No. 9).

Specifications subject to change without notice.

PRODUCT CODES

Catalog Number	Wattage	Finish	Description
TF60 60W CLNG BL	60W	Black	60W Low Profile Mount Transformer
TF60 60W CLNG SL	60W	Silver	60W Low Profile Mount Transformer
TF60 60W CLNG WH	60W	White	60W Low Profile Mount Transformer
TF60 100W CLNG BL	100W	Black	100W Low Profile Mount Transformer
TF60 100W CLNG SL	100W	Silver	100W Low Profile Mount Transformer
TF60 100W CLNG WH	100W	White	100W Low Profile Mount Transformer
TF60 150W CLNG BL	150W	Black	150W Low Profile Mount Transformer
TF60 150W CLNG SL	150W	Silver	150W Low Profile Mount Transformer
TF60 150W CLNG WH	150W	White	150W Low Profile Mount Transformer

DIMENSIONS



TRAC 12/25, FLEX 12

Low Voltage Systems

COMPACT, LED-COMPATIBLE, 12V SURFACE MOUNT TRANSFORMERS

TF60

PRODUCT DESCRIPTION

The TF60 Series Compact 12V Surface Mount Transformers are designed to power Flex 12 trac when suspended on the wall. Transformers are available in 60W, 100W or 150W versions in a variety of finishes. All are LED or halogen-compatible and dimmable.

PRODUCT SPECIFICATIONS

Construction Low profile housing – less than 2" overall height • Vented polycarbonate housing mounts to a 16 gauge galvanized steel universal mounting plate • Installs over standard 4" junction box • Includes wall mounting hardware which is dimensionally compatible with Flex 12 TF530 Outrigger Supports • White, black or silver finish housing with integral silver finish support hardware.

Electrical 120VAC input • Automatic resetting overload and short circuit protection • 60W & 100W versions have no minimum load restrictions • 150W requires 50W minimum load.

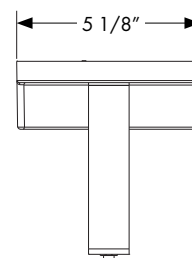
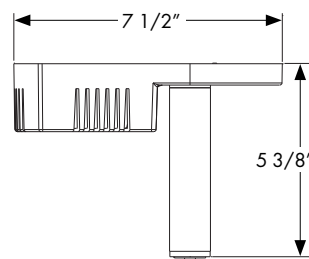
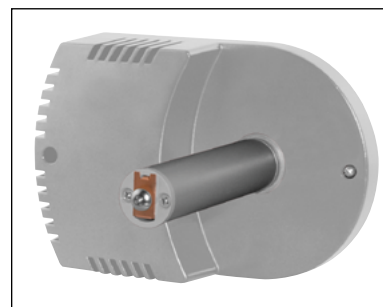
Dimming Dimmable using high quality reverse phase electronic low voltage (ELV) dimmers.

Flex 12 Installation Designed to work in conjunction with TF530 Outrigger Supports for required mechanical support • Enables Flex 12 to be mounted within 5-1/2" of mounting surface • One mounting point required every 3' maximum • Consult Ordering & Specification Guidelines document for more information.

Labels ETL Listed for use in the U.S. (UL 2108) and Canada (CSA C22.2 No. 9).

Specifications subject to change without notice.

DIMENSIONS



PRODUCT CODES

Catalog Number	Wattage	Finish	Description
TF60 60W WALL BL	60W	Black	60W Wall Mount Transformer
TF60 60W WALL SL	60W	Silver	60W Wall Mount Transformer
TF60 60W WALL WH	60W	White	60W Wall Mount Transformer
TF60 100W WALL BL	100W	Black	100W Wall Mount Transformer
TF60 100W WALL SL	100W	Silver	100W Wall Mount Transformer
TF60 100W WALL WH	100W	White	100W Wall Mount Transformer
TF60 150W WALL BL	150W	Black	150W Wall Mount Transformer
TF60 150W WALL SL	150W	Silver	150W Wall Mount Transformer
TF60 150W WALL WH	150W	White	150W Wall Mount Transformer

ENGINEERING DATA

	TF60 60W	TF60 100W	TF60 150W
Input Voltage	120VAC	120VAC	120VAC
Input Current (max.)	0.60A	0.9A	1.25A
Nominal Output	11.5V	11.5V	11.5V
Min. Load	0.6 Watts (VA)	0.6 Watts (VA)	50 Watts (VA)
Max. Load	60 Watts (VA)	100 Watts (VA)	150 Watts (VA)
Operating Frequency	>20kHz	>20kHz	>20kHz
Power Factor	>0.95	>0.98	>0.95
T.H.D.	<20%	<30%	<20%