

FEATURES & SPECIFICATIONS

INTENDED USE — The industry's next generation in linear direct fluorescent products. This new compact, low-profile design offers our customers unique product features which improve the overall installation process and appearance while reducing labor cost, making it the most versatile solution for commercial, retail, manufacturing, warehouse, and cove and display applications.

CONSTRUCTION — Compact designed channel and cover are formed from code-gauge cold-rolled steel. Innovative T8 two-lamp back plate offers compact design and additional socket protection. Locking lamp holder tracks bolsters strength of the overall strip construction while creating improved lamp stability. Design includes T8 socket, features rotating collar and enclosed contacts. Improved easy "snap n' lock" end plates allow for quick attachment.

Designed to accommodate a wide variety of T8 lamp lengths. Channel offers the gripper back feature which strengthens the overall construction and allows for the use of the new Z spring hanger (see back). Newly designed, patent-pending channel cover offers a secure fit design, allowing for easy access and quick attachment without pinching wires.

Finish: High-gloss, baked white enamel finish (white standard). Five-stage iron-phosphate pretreatment ensures superior paint adhesion and rust resistance. Other channel paint finish options: black (MB), smoke gray (SMG) and galvanized (GALV).

OPTICS — Reflector options include solid or apertured designs in both symmetric and asymmetric configurations. Consult factory for special-apertured versions.

ELECTRICAL — Thermally protected, resetting, Class P, HPF, non-PCB, UL listed. Suitable for damp locations. AWN, TFN or THHN wire used throughout, rated for required temperatures.

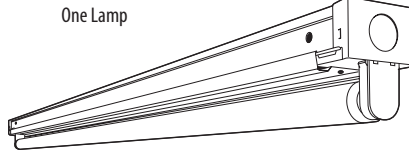
INSTALLATION — Patented-pending "three-point" row connector locks channel together for straighter and faster row mounting; included as standard. Ideal for surface-mount or suspended.

LISTINGS — UL Listed, CUL Listed or CSA Certified to Canadian Standards. Listed for 25° C ambient temperature.

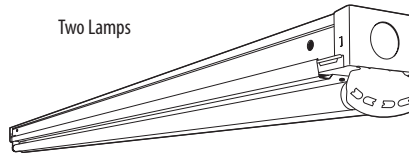
WARRANTY — Guaranteed for one year against mechanical defects in manufacture.

Note: Specifications subject to change without notice.

Catalog Number
Notes
Type



One Lamp



Two Lamps

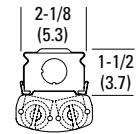
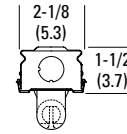


Compact T8 Striplight



Linear Lamps
1 or 2 Lamps

	Specifications
Length:	18 (45.7), 24 (61.0) 36 (91.4), 48 (121.9) 72 (182.9) or 96 (243.8)
Width:	2-1/8 (5.4)
Depth:	1-1/2 (3.8)



All dimensions are inches (centimeters) unless otherwise noted.

ORDERING INFORMATION

For shortest lead times, configure products using **standard options (shown in bold.)**

Example: Z 1 32 MVOLT GEB10IS

Series	Number of lamps	Lamp type	Voltage	Options
Z Compact strip ¹ For tandem double-length unit, add prefix T. Example: TZ	1	17 17W T8 (24")	120	GEB10IS T8 electronic ballast, ≤10% THD, instant start (T8 only) GEB10RS T8 electronic ballast, ≤10% THD, rapid start BILP High-efficiency .78 bf (low) GLR Internal fast-blow fuse (add X for external) ² GMF Internal slow-blow fuse (add X for external) ² PLR Plug in wiring, specify number of branch circuits and hot wires (A-black, B-Red, C-Blue, AB or AC) TILW Tandem in-line wiring EL55 Emergency battery pack (nominal 390-700 lumens); consult factory for additional battery packs ^{2,3,4}
	2 Not included	25 25W T8 (36") 32 32W T8 (48")	277 347 MVOLT Others available	
				EL65 Emergency battery pack (nominal 725-1325 lumens) ^{2,3,4} CSA CSA Certified NOM NOM Certified MSI Aisle motion sensor ³ MSI360 360° motion sensor ³ MSE360LBK 360° motion sensor ⁴ MSE360LBZ 360° motion sensor; for mounting within row or at end of row ⁴

Accessories: Order as separate catalog number.

SQ_	Swivel-stem hanger (specify length in 2" increments)	WGZ8ASR48	4' wireguard, white, for asymmetric reflector
ZSPRG	Tong and T-grid hanger	HC36	Hanger chain, 36"
Z8SMR48	Symmetric reflector, 4' white	HC36	Hanger chain, 36"
Z8ASR48	Asymmetric reflector, 4' white	ZACVH	Aircraft cable with hook
Z8SMR36	Symmetric reflector, 3' white	ZAC72	Aircraft cable, 72"
Z8ASR36	Asymmetric reflector, 3' white	ZACF72	Aircraft cable with feed, 72"
Z8SMR24	Symmetric reflector, 2' white	ZAC120	Aircraft cable, 120"
Z8ASR24	Asymmetric reflector, 2' white	ZACF120	Aircraft cable with feed, 120"
WGZ48	4' wireguard, white	ZAC144	Aircraft cable, 144"
WGZ8SMR48	4' wireguard, white, for symmetric reflector	ZACF144	Aircraft cable with feed, 144"

Notes

- Order two 48" for 8' fixtures.
- Specify voltage (available 120/277V).
- Not available with CSA Certified.
- Available with 4' and 8' lengths only.

Z Compact Striplight

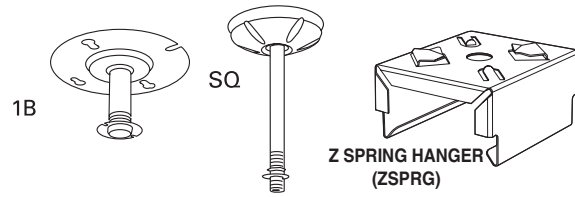
MOUNTING DATA

For unit or row installation, surface or stem mounting.

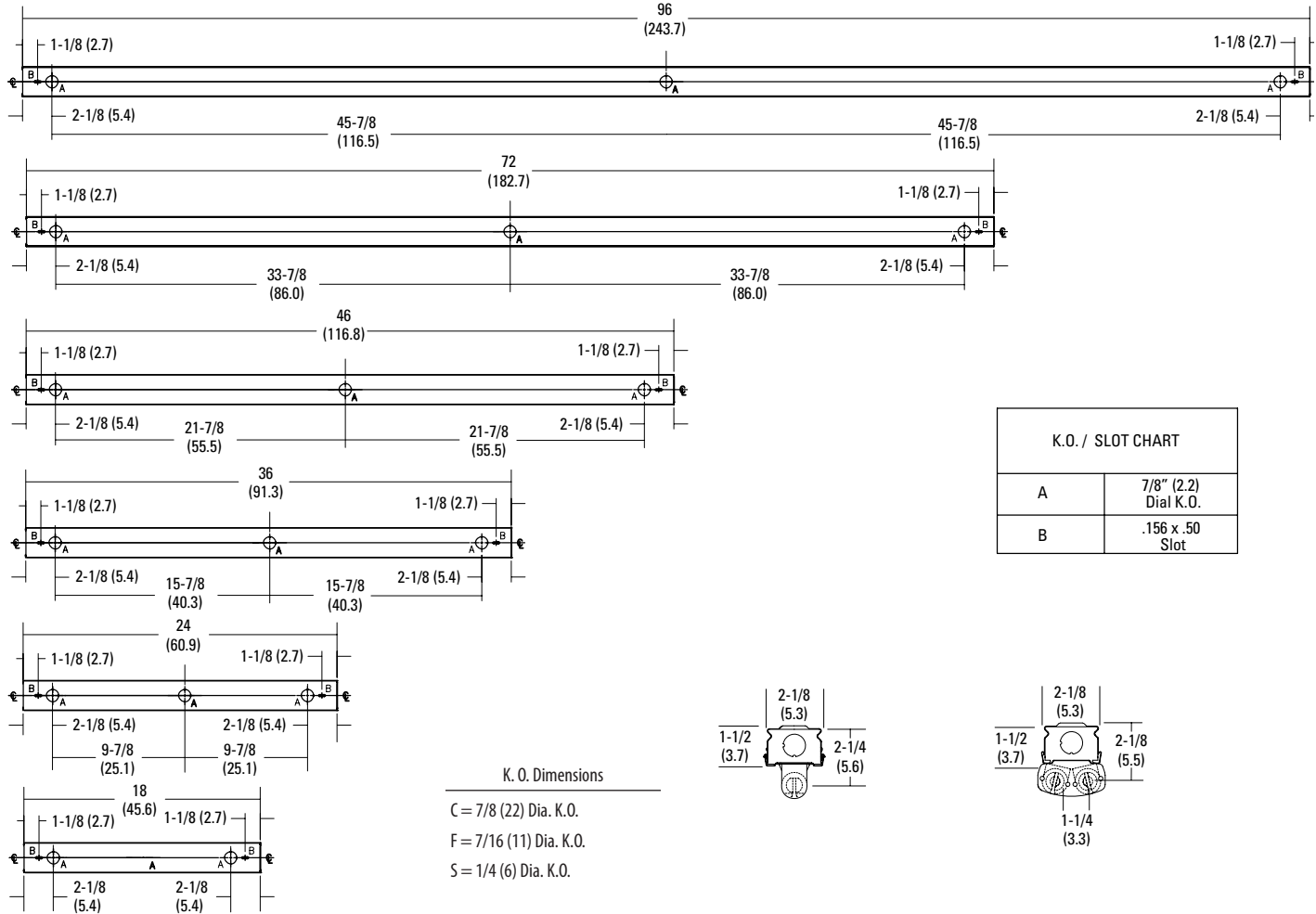
Unit installation — Minimum of two hangers required.

Row installation — One hanger per channel plus one per row required.

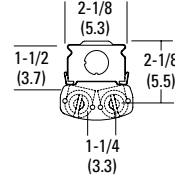
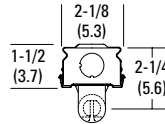
Review local codes when installing any product, as the minimum of 1 hanger per fixture may not satisfy your local building code.



DIMENSIONS



K.O. / SLOT CHART	
A	7/8" (2.2) Dial K.O.
B	.156 x .50 Slot



PHOTOMETRICS

Calculated using the zonal cavity method in accordance with IESNA LM41 procedure. Floor reflectances are 20%. Lamp configurations shown are typical.

Full photometric data on these and other configurations available upon request.

TEST NO: LTL17128

LUMINAIRE CATALOG NO.: Z 1 32 MVOLT GEB10IS

LUMENS PER LAMP: 2800

TEST NO: LTL17130

LUMINAIRE CATALOG NO.: Z 2 32 MVOLT GEB10IS

LUMENS PER LAMP: 2800

RCR	Coefficients of Utilization																			
	pf	80%			70%			50%			pf	80%			70%			50%		
		pc	50%	30%	10%	50%	30%	10%	50%	30%		10%	pw	50%	30%	10%	50%	30%	10%	50%
0	107	107	107	102	102	102	92	92	92	0	100	100	100	95	95	95	86	86	86	
1	87	82	77	83	78	74	75	71	68	1	84	79	75	79	75	71	72	68	65	
2	74	66	60	70	63	57	63	58	53	2	71	64	59	68	62	56	61	56	52	
3	64	55	48	61	53	46	55	48	43	3	62	54	47	59	51	46	53	47	42	
4	56	47	40	53	45	38	48	41	35	4	54	46	39	51	44	38	46	40	35	
5	49	40	33	47	39	32	42	35	30	5	48	39	33	46	38	32	41	35	30	
6	44	35	29	42	34	28	38	31	26	6	43	34	29	41	33	28	37	30	26	
7	40	31	25	38	30	24	34	27	22	7	38	30	25	37	29	24	33	27	22	
8	36	28	22	34	27	21	31	25	20	8	35	27	22	33	26	21	30	24	20	
9	33	25	19	31	24	19	29	22	18	9	32	24	19	30	24	19	28	22	18	
10	30	22	17	29	22	17	26	20	16	10	29	22	17	28	21	17	26	20	16	

Zonal Lumen Summary				Zonal Lumen Summary			
Zone	Lumens	% Lamp	% Fixture	Zone	Lumens	% Lamp	% Fixture
0° - 30°	356.4	12.7	13.5	0° - 30°	723.3	12.9	14.6
0° - 40°	603.9	21.6	22.9	0° - 40°	1230.3	22.0	24.8
0° - 60°	1198.3	42.8	45.5	0° - 60°	2402.0	42.9	48.4
0° - 90°	2029.3	72.5	77.1	0° - 90°	3748.6	66.9	75.5
90° - 180°	602.8	21.5	22.9	90° - 180°	1215.1	21.7	24.5
0° - 180°	2632.0	94.0	100.0	0° - 180°	4963.7	88.6	100.0