



**Recessed  
Indirect  
LED Luminaires**





# INDIRECT for LIGHTING that is EXPERIENCED

Lighting touches more than our sense of sight. The elegant, indirect glow of the Breez™ Series luminaire from Lithonia Lighting® plays to our sense of comfort while providing the amount of illumination needed for critical tasks below.

## LED Reimagined —

LED technology creates new opportunities for ingenuity. By hiding the source, direct glare is eliminated. Light is projected from the side of the luminaire to a highly-reflective, precisely-formed optical system. The result is beautifully directed light and efficacy that makes the LED so affordable.



Elegant. Efficient. breez™



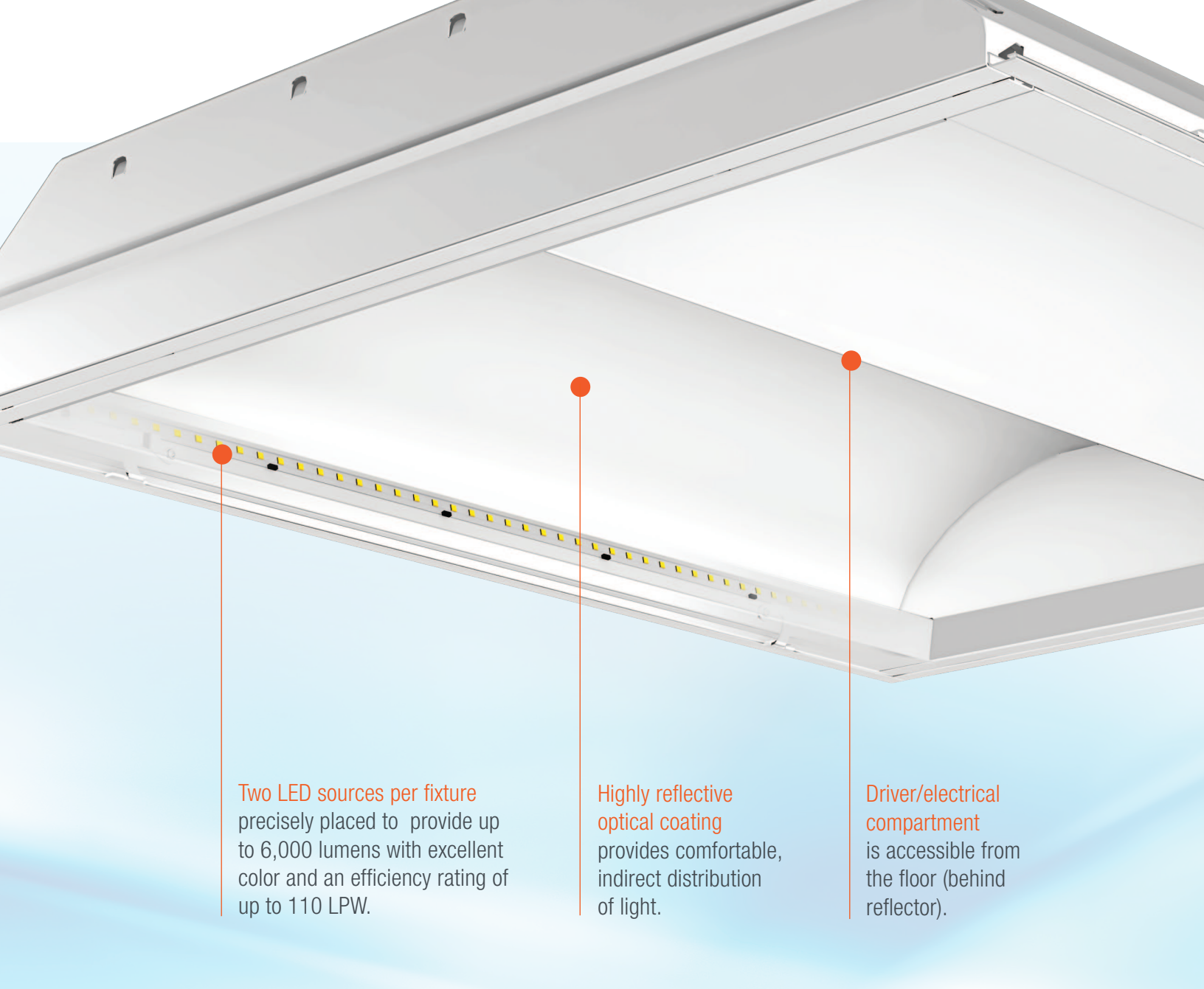




Used with permission. © DBOX, NYC. All rights reserved.

## HIGH TECH for ARCHITECTURAL SIMPLICITY

Setting the Breez Series LED luminaire apart from most recessed LED troffers is its whisper-quiet appearance along the ceiling plane. Ideal for new construction or RELIGHTing (retrofit installation), the soft gull-wing styling delivers as much as 6,000 lumens efficiently across the clean, white reflective surface to the space below. From all viewing angles, the eye is shielded from the source of light thanks to the luminaire's unique architectural design.



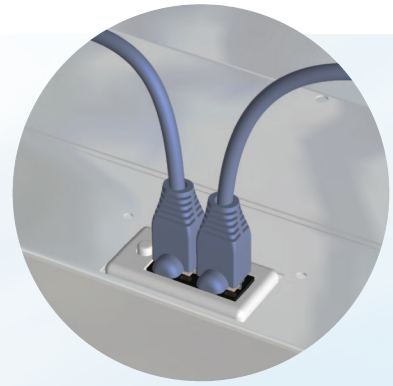
**Two LED sources per fixture** precisely placed to provide up to 6,000 lumens with excellent color and an efficiency rating of up to 110 LPW.

**Highly reflective optical coating** provides comfortable, indirect distribution of light.

**Driver/electrical compartment** is accessible from the floor (behind reflector).

## DESIGN ENGINEERED for EFFICIENCY

The Breez Series LED luminaire and RELIGHT kit incorporate simple geometry to increase the effectiveness of LED technology's amazing properties. It also uses the most advanced – and visually comfortable – reflective coatings available to increase efficacy. Light from the embedded LED panels bounces off the highly reflective coating and is distributed below. Meanwhile, a secondary reflector positioned below the LED board assembly bounces indirect light from the LEDs out of the luminaire. The result is volumetric lighting that's comfortable and visually compelling in the space.



nLight® enabled  
making the luminaire  
digitally addressable for  
communication with other  
nLight® control devices.

No Lens, diffuser  
or refractor  
to collect dust or  
trap bugs.

Reflective end plates  
increase the availability  
of indirect light while  
enhancing the aesthetics  
of the fixture.

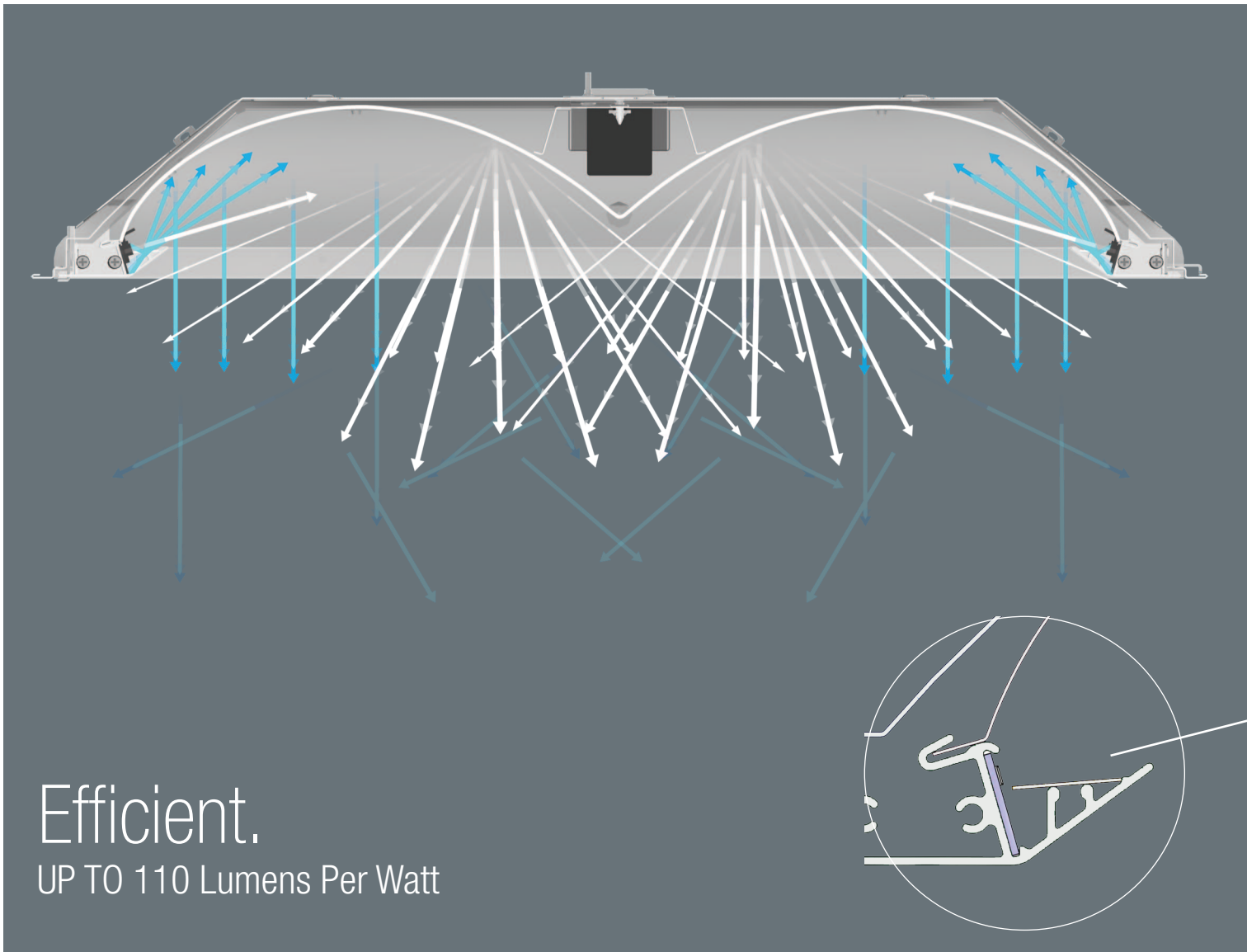
Aluminum extrusion  
blends with the  
ceiling plane.

## eldoLED

eldoLED® high-performance  
driver options  
deliver choice of dimming  
range (1% standard), and  
choices for control (DALI,  
DMX, etc.)

### Constructed for easy handling and installation

- Low profile, 3-5/8" overall depth for use in restrictive plenum applications.
- Aluminum frame extrusions and mechanical fasteners maintain consistent relationship between the optical components and LED sources.
- Assembled with mechanical fasteners for rigidity and strength.
- Powder-coated cold rolled steel painted after fabrication for durability and consistency in appearance.
- Patents pending.



### Driver Options

Breez Series LED comes standard with a 0-10V digital eldoLED® driver that provides smooth, seamless and flicker-free dimming to 1%. Similar to incandescent dimming, this natural dimming attains the deepest dimming levels without dropout and without a visual flash when powering on.

These advanced dimming capabilities help save energy and prolong the life of the LED modules while providing users full control of illumination levels.

- Additional driver options include dim to black (0.1%), DALI and DMX/RDM.
- Low Inrush alleviates damaging current surges; low EMI eliminates the need for external filters.
- 89% full-load efficiency means more LPW are delivered from the luminaire; advanced electronic off means fewer watts are consumed.





# VOLUMETRIC DISTRIBUTION at its BEST

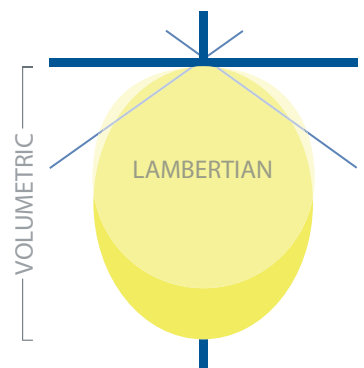
Volumetric lighting provides the optimal balance of directional and diffuse light from a high-performing light source to enhance the interior space. The directional light provides spatial definition and visual clarity. The diffuse light is reflected throughout the space to create a softer, more comfortable luminous environment.

Volumetric lighting is ideal for offices, schools, hospitals, retail, and other workspaces because it enhances the environment with an even distribution of light to eliminate glare and dark spots. The result is a more comfortable environment, with a quiet ceiling, and walls and other vertical surfaces illuminated smoothly from top to bottom.

The Breez Series LED luminaire presents minimal proportions and interruptions along the ceiling plane to ensure a clean, sophisticated appearance that complements today's modern architectural ceilings.

## Volumetric distribution

Volumetric lighting provides a graceful twist of the traditional lambertian distribution. This solution provide extra punch below 30° to maximize application efficiency while directing more light above 70°, smoothly illuminating the wall up to the ceiling.





## ORDERING\*

Series	Lumens	Voltage	Driver	Color Temperature	Controls
2BZL2 2'x2' Breez Series LED	24L 2400 lumens	(blank) MVOLT (120-277V)	EZ1 eldoLED dims to 1% (0-10V dimming) EZB eldoLED dims to black (0-10V dimming)	LP830 82 CRI, 3000K	(blank) No controls
	30L 3000 lumens				
	34L 3400 lumens				
2BZL4 2'x4' Breez Series LED	40L 4000 lumens	(blank) MVOLT (120-277V)	EDB eldoLED DALI EXB eldoLED DMX/RDM SLD Step-level dimming	LP835 82 CRI, 3500K LP840 82 CRI, 4000K	N80 nLight with 80% (L80) lumen management N80EMG nLight with 80% (L80) lumen management. For use with generator supply EM power N100 nLight without lumen management N100EMG nLight without lumen management. For use with generator supply EM power
	48L 4800 lumens				
	60L 6000 lumens				

\*Subject to change. Please reference [Lithonia.com/bzl](http://Lithonia.com/bzl) for the most current specification information.



## INTEGRATED CONTROLS SMART + SIMPLE

The Breez Series LED luminaire is much more than an innovative luminaire. It is available with on-board nLight® digital technology that allows the luminaire to communicate with control devices such as occupancy sensors, photocells and wall stations.

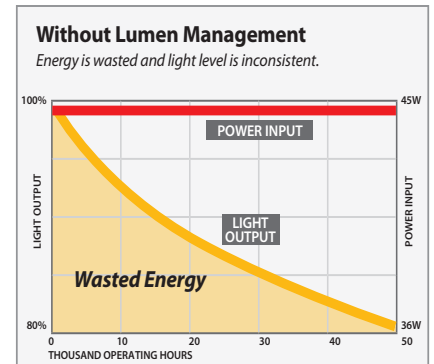
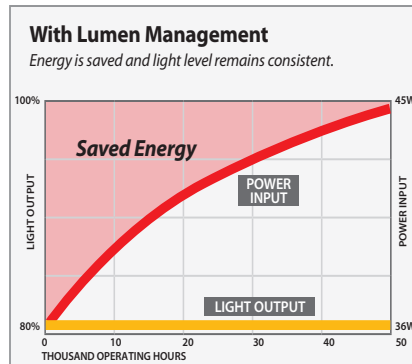
Linking to other luminaires and control devices is simple. Just connect together using Cat5 cabling. All devices are directly powered from the luminaire and automatically discover each other for true plug-and-play convenience.

Optimize your smart luminaires for increased energy savings by including nLight Lumen Management. The integrated intelligence actively manages the LED light source so that lumen output is maintained over the life of the luminaire.



Options  
JP32 (2'x2' only) Palletized. Job pack, qty. 32

JP16 (2'x4' only) Palletized. Job pack, qty. 16



Breez™ Series Indirect LED luminaires are part of the versatile Lithonia Lighting® indoor ambient lighting LED product portfolio. Front-of-the-house to back-of-the-house; whether a continuum of design or light source, new installation or retrofit — we have a lighting solution for you.



#### COMPANION PRODUCTS

Breez™ Series LED RELIGHT kit. An affordable option for retrofitting your existing space. RELIGHT kits provide the appearance, performance and energy savings of a new light fixture with fast, simple installation.

DesignLights Consortium® (DLC) qualified product. Not all versions of this product may be DLC qualified. Please check the DLC Qualified Products List at [www.designlights.org/QPL](http://www.designlights.org/QPL) to confirm which versions are qualified.

#### LITHONIA LIGHTING®

Lithonia Lighting is a member of the Acuity Brands portfolio of lighting, controls and daylighting solutions.

Lithonia Lighting offers one of the industry's broadest lighting portfolios for commercial and industrial lighting applications. This includes recessed, surface, wraparound, relighting and retrofit kits. Our LED, fluorescent and HID lighting are recognized for their quality, reliability and solid performance, making Lithonia Lighting the most specified brands in the lighting industry.

[www.lithonia.com](http://www.lithonia.com)

