

FEATURES & SPECIFICATIONS

INTENDED USE — High performance parabolic luminaires for use in open area applications and electronic offices where optical control, visual comfort and light cut-off are important.

Design optimized for use with T8 lamps and low-profile electronic ballasts.

Choice of diffuse or specular louvers utilizing the latest developments in louver finishing for minimized louver iridescence.

CONSTRUCTION — Black reveal provides floating louver appearance, conceals optional air-supply slots.

Square corner end plates improve strength and durability.

Integral T-bar safety clips hold fixture to T-bar securely; no fasteners required.

Heavy gauge hinges die-formed for maximum strength; spring action latches concealed in black reveal.

Housing formed from cold-rolled steel. Louver formed from anodized aluminum. No asbestos used in this product.

Overlapping flange and modular ceiling trims available factory installed with swing gate hangers or field convertible with optional trim and hangers.

Finish: Five-stage iron-phosphate pretreatment ensures superior paint adhesion. Painted parts finished with high-gloss, baked white enamel.

ELECTRICAL — Thermally-protected, resetting, Class P, HPF, non-PCB, UL Listed, CSA certified ballast is standard.

Electronic ballasts are sound rated A.

Ballast disconnect provided standard where required to comply with US and Canadian electrical codes.

Fixture conforms to UL1570 and is suitable for damp locations. AWM, TFN or THHN wire used throughout, rated for required temperatures.

LISTING — UL Listed (Standard), CSA Certified or NOM Certified (see Options).

WARRANTY — 1-year limited warranty. Complete warranty terms located at:

www.acuitybrands.com/CustomerResources/Terms_and_conditions.aspx

Note: Actual performance may differ as a result of end-user environment and application.

Specifications subject to change without notice.

Catalog Number
Notes
Type

PARAMAX® Parabolic Troffer

2PM3N 2'x2'



**3" Louver Family
6" Wide U Lamps**

Specifications

Length: 24 (60.9)

Width: 24 (60.9)

Depth: 4-1/2 (11.4)

Weight: 16 lbs (7.3 kg)

All dimensions are inches (centimeters).

ORDERING INFORMATION

For shortest lead times, configure products using **bolded options**.

Example: 2PM3N G B 2 U316 9LD MVOLT GEB10IS

Series	Trim type	Air function	Number of lamps	Lamp type	Number of cells	Louver finish	Voltage
2PM3N Paramax 3" louver family	G Grid F Overlapping flanged ST Screw slot	B No air function A Air supply/return (slots in side trim) D Dual function supply/return/removal	2 (Not included)	U316 32W T8 U (6" leg)	6 9 12 16	LD Low iridescent anodized diffuse silver LS Low iridescent anodized specular silver	MVOLT ¹ 120 277 347 (Others available)

Options							
GEB10IS	Electronic ballast, ≤10% THD, instant start	QFC213	Reloc® Quick-Flex ^{3,4}	ACS	Air closure strips (A and D models only)		
GEB10PS	Electronic ballast, ≤10% THD, programmed start	LST	Tandem fixture pairs (shared ballasts)	APB	Air-pattern control blades (A and D models only)		
EL	500 nominal lumen battery pack (Noncompliant with CA T20)	LP	Lamped, specify lamp type and color	PAF	Painted after fabrication (white enamel)		
EL14	1400 nominal lumen battery pack (Noncompliant with CA T20) ²	GLR	Internal fast-blow fuse ⁴	JP	Palletized and stretch-wrapped (G trim only)		
EL14 T20C	1400 nominal lumen battery pack, Certified in CA Title 20 MAEDBS ²	GMF	Internal slow-blow fuse ⁴	CSA	CSA certified		
PWS1836	6' prewire, 3/8" dia., 18-gauge, 3 wires			NOM	NOM certified		

Notes

- MVOLT standard for 120V and 277V applications. Some options require voltage specified.
- Some options increase fixture depth. Consult factory if plenum space is a concern.
- Must specify circuit wiring. Refer to www.lithonia.com/Reloc for additional information.
- Must specify voltage.

2PM3N 2'x2' 6" U Lamps, 3" Louver Family

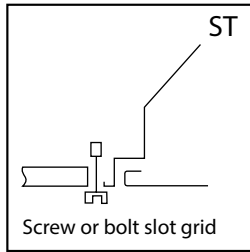
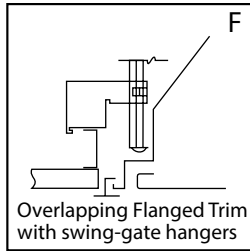
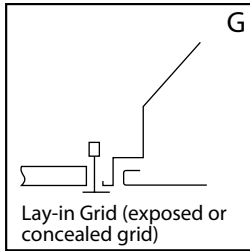
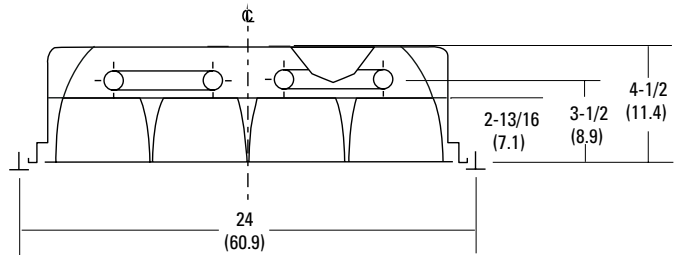
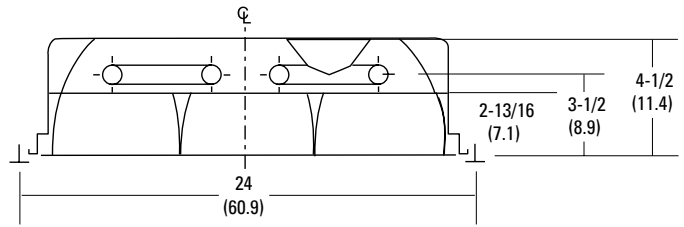
MOUNTING DATA

Continuous row mounting of flanged units requires CRE and CRM trim options. Consult factory.

Mounting Information - Trim Types	
Ceiling type	Appropriate trim type
Exposed grid tee	G
Concealed grid tee	G,ST
Concealed Z-spline	F
Screw slot (consult factory)	ST
Acoustical tile, plaster or plasterboard on rigid support parallel to lamps	F

DIMENSIONS

All dimensions are inches (centimeters) unless specified otherwise.



Notes

1 Recommended rough-in dimensions for F trim fixtures 24"x24". (Tolerance is +1/4", -0") Swing-gate range 1" to 4-3/16", span 23-1/2" to 26-5/16".

PHOTOMETRICS

Full photometric data available upon request.

TEST NO: LTL14506
2PM3N G B 2U316 9LD GEB
LUMENS PER LAMP: 2850
LAMPS PER LUMINAIRE: 2

Coefficients of Utilization

ROR	f p	Coefficients of Utilization								
		80%			70%			50%		
		pc	pw	50%	30%	10%	50%	30%	10%	50%
0	83	83	83	81	81	81	77	77	77	
1	75	72	70	73	71	69	70	68	67	
2	66	62	59	65	61	58	63	60	57	
3	59	54	50	58	53	50	56	52	49	
4	53	47	43	52	47	43	50	46	42	
5	48	42	38	47	41	37	45	41	37	
6	43	37	33	42	37	33	41	36	33	
7	39	33	29	38	33	29	37	33	29	
8	36	30	26	35	30	26	34	29	26	
9	33	27	24	32	27	23	31	27	23	
10	30	25	21	30	25	21	29	24	21	

Zonal Lumen Summary

Zone	Lumens	% Lamp	% Fixture
0° - 30°	1269.5	22.3	32.0
0° - 40°	2135.9	37.5	53.8
0° - 60°	3634.7	63.8	91.6
0° - 90°	3969.3	69.6	100.0
90° - 180°	0.0	0.0	0.0
0° - 180°	3969.3	69.6	100.0

TEST NO: LTL14507
2PM3N G B 2U316 16LD GEB
LUMENS PER LAMP: 2850
LAMPS PER LUMINAIRE: 2

Coefficients of Utilization

ROR	f p	Coefficients of Utilization								
		80%			70%			50%		
		pc	pw	50%	30%	10%	50%	30%	10%	50%
0	70	70	70	68	68	68	65	65	65	
1	63	61	59	62	60	58	59	58	56	
2	56	53	50	55	52	49	53	50	48	
3	50	46	43	49	45	42	47	44	41	
4	45	40	37	44	40	36	43	39	36	
5	40	35	32	40	35	32	38	34	31	
6	36	31	28	36	31	28	35	31	28	
7	33	28	25	33	28	25	32	28	25	
8	30	25	22	30	25	22	29	25	22	
9	28	23	20	27	23	20	27	23	20	
10	26	21	18	25	21	18	25	21	18	

Zonal Lumen Summary

Zone	Lumens	% Lamp	% Fixture
0° - 30°	1078.1	18.9	32.2
0° - 40°	1773.9	31.1	53.0
0° - 60°	3113.4	54.6	93.0
0° - 90°	3349.4	58.8	100.0
90° - 180°	0.0	0.0	0.0
0° - 180°	3349.4	58.8	100.0