

FEATURES & SPECIFICATIONS

INTENDED USE — High performance parabolic luminaires for use in open area applications and electronic offices where optical control, visual comfort and light cut-off are important.

Design optimized for use with T8 lamps and low-profile electronic ballasts.

Choice of diffuse or specular louvers utilizing the latest developments in louver finishing for minimized louver iridescence.

CONSTRUCTION — Black reveal provides floating louver appearance, conceals optional air-supply slots. Square corner end plates improve strength and durability.

Integral T-bar safety clips hold fixture to T-bar securely; no fasteners required.

Heavy-gauge hinges die-formed for maximum strength; spring action latches concealed in black reveal.

Housing formed from cold-rolled steel. Louver formed from anodized aluminum. No asbestos used in this product.

Overlapping flange and modular ceiling trims available factory installed with swing gate hangers or field convertible with optional trim and hangers.

Finish: Five-stage iron-phosphate pretreatment ensures superior paint adhesion. Painted parts finished with high-gloss, baked white enamel.

ELECTRICAL — Thermally protected, resetting, Class P, HPF, non-PCB, UL Listed, CSA certified ballast is standard.

Electronic ballasts are sound rated A.

Ballast disconnect provided standard where required to comply with US and Canadian electrical codes.

Fixture conforms to UL1570 and is suitable for damp locations. AWM, TFN or THHN wire used throughout, rated for required temperatures.

LISTING — UL Listed (Standard), CSA Certified (see Options).

WARRANTY — 1-year limited warranty. Complete warranty terms located at: www.acuitybrands.com/support/customer-support/terms-and-conditions

Note: Actual performance may differ as a result of end-user environment and application.

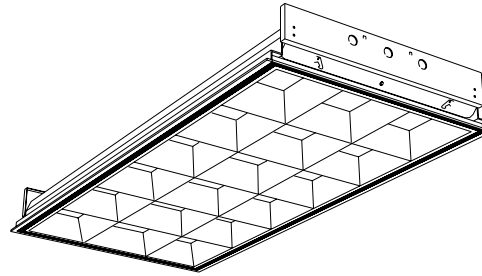
Specifications subject to change without notice.

Catalog Number
Notes
Type

PARAMAX® Parabolic Troffer

2PM3N 2'x4'

3" Louver Family



Specifications

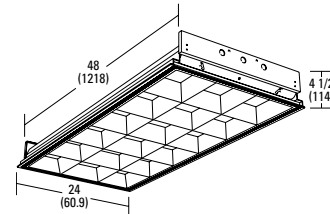
Length: 48 (121.8)

Width: 24 (60.9)

Depth: 4-1/2 (11.4)

Weight: 32 lbs (14.5 kg)

All dimensions are inches (centimeters).



ORDERING INFORMATION

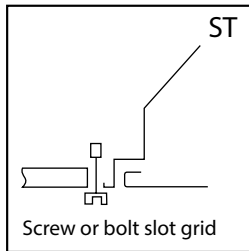
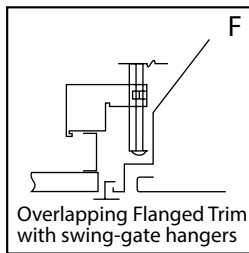
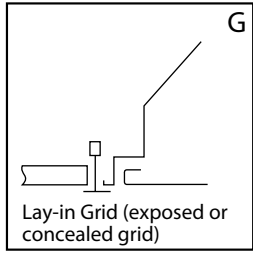
Catalog #	Cicode	Description	# of Lamps	Wattage	Voltage	Ballast Type
2PM3N G B 3 32 18LD MVOLT 1/3 GEB10IS	*616107	2'X4' 18 cell parabolic troffer	3	32	120-277	Electronic, instant start
2PM3N G A 3 32 18LD MVOLT 1/3GEB10ISJP12	*857558	2'X4' 18 cell parabolic troffer	3	32	120-277	Electronic, instant start
2PM3N G B 4 32 32LD MVOLT 1/4 GEB10IS	*666258	2'X4' 32 cell parabolic troffer	4	32	120-278	Electronic, instant start
2PM3N G B 2 32 18LD MVOLT GEB10IS	*729280	2'X4' 18 cell parabolic troffer	2	32	120-279	Electronic, instant start
2PM3N G B 3 32 18LD MVOLT 1/3 GEB10IS JP12	*105VFW	2'X4' 18 cell parabolic troffer	3	32	120-280	Electronic, instant start

2PM3N 2'x4' 3" Louver Family

MOUNTING DATA

Continuous row mounting of flanged units requires CRE and CRM trim options. Consult factory.

Mounting Information - Trim Types	
Ceiling type	Appropriate trim type
Exposed grid tee	G
Concealed grid tee	G,ST
Concealed Z-spline	F
Screw slot (consult factory)	ST
Acoustical tile, plaster or plasterboard on rigid support parallel to lamps	F

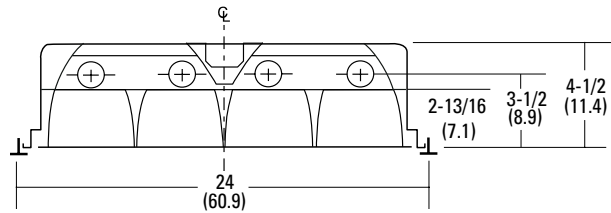
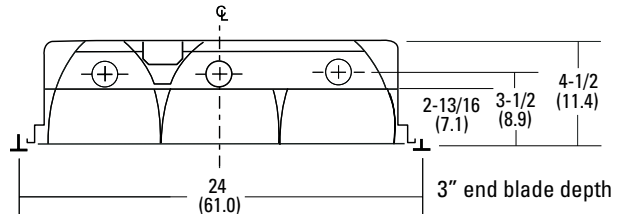
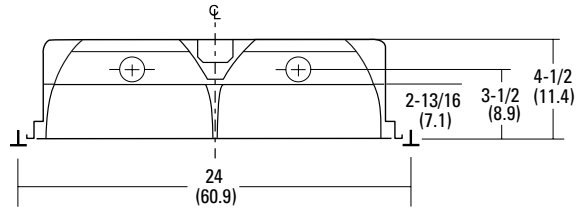


Notes

- 1 Recommended rough-in dimensions for F trim fixtures 24"x48". (Tolerance is +1/4", -0") Swing-gate range 1-7/16" to 3-7/16", span 23-1/2" to 26-7/16".

DIMENSIONS

All dimensions are inches (centimeters) unless specified otherwise.



ENERGY DATA

Energy Data (Calculated in accordance with NEMA Standards LE-5)					
LER.FP	Annual energy cost*	Lamp description	Lamp lumens	Ballast factor	Watts
65 (LD louver)	\$3.69	(2) 32W T8	2,850	0.88	59
66 (LD louver)	\$3.64	(3) 32W T8	2,850	0.88	85
59 (LD louver)	\$4.07	(4) 32W T8	2,850	0.88	112

*Comparative yearly lighting energy cost per 1000 lumens

PHOTOMETRICS

Calculated using the zonal cavity method in accordance with IESNA LM41 procedures. Floor reflectances are 20%. Lamp configurations shown are typical. Full photometric data on these and other configurations available upon request.

TEST NO: LTL14496

2PM3N 2 32 12LD

LUMENS PER LAMP: 2850

LAMPS PER LUMINAIRE: 2

TEST NO: LTL14671

2PM3N 3 32 18LD

LUMENS PER LAMP: 2850

LAMPS PER LUMINAIRE: 3

TEST NO: LTL14541

2PM3N 4 32 32LD

LUMENS PER LAMP: 2850

LAMPS PER LUMINAIRE: 4

RCR	pf	pc	Coefficients of Utilization																
			80%			70%			50%										
			50%	30%	10%	50%	30%	10%	50%	30%	10%								
0	91	91	91	89	89	89	85	85	85										
1	82	79	76	80	77	75	77	75	73										
2	72	67	63	71	66	63	68	64	61										
3	64	58	53	62	57	53	60	56	52										
4	56	50	45	55	49	45	53	48	44										
5	50	44	39	49	43	38	48	42	38										
6	45	38	34	44	38	33	43	37	33										
7	41	34	29	40	34	29	39	33	29										
8	37	31	26	36	30	26	35	30	26										
9	34	28	23	33	27	23	32	27	23										
10	31	25	21	31	25	21	30	25	21										

RCR	pf	pc	Coefficients of Utilization																
			80%			70%			50%										
			50%	30%	10%	50%	30%	10%	50%	30%	10%								
0	89	89	89	87	87	87	83	83	83										
1	80	78	75	79	76	74	76	74	72										
2	71	67	63	70	66	63	67	64	61										
3	64	58	54	62	57	53	60	56	53										
4	57	51	46	56	50	46	54	49	45										
5	51	45	40	50	44	40	49	44	40										
6	46	40	35	45	39	35	44	39	35										
7	42	36	31	41	35	31	40	35	31										
8	38	32	28	38	32	28	37	31	28										
9	35	29	25	34	29	25	34	28	25										
10	32	26	23	32	26	23	31	26	22										

RCR	pf	pc	Coefficients of Utilization																
			80%			70%			50%										
			50%	30%	10%	50%	30%	10%	50%	30%	10%								
0	79	79	79	77	77	77	74	74	74										
1	71	69	67	70	68	66	67	65	64										
2	64	60	57	63	59	56	60	57	55										
3	57	53	49	56	52	48	54	51	48										
4	51	46	42	50	46	42	49	45	42										
5	46	41	37	46	41	37	44	40	37										
6	42	37	33	41	36	33	40	36	32										
7	38	33	29	38	33	29	37	32	29										
8	35	30	26	35	30	26	34	29	26										
9	32	27	24	32	27	24	31	27	23										
10	30	25	22	29	25	21	29	24	21										

Zonal Lumen Summary			
Zone	Lumens	% Lamp	% Fixture
0° - 30°	1177.9	20.7	26.9
0° - 40°	2015.8	35.4	46.1
0° - 60°	3919.0	68.8	89.6
0° - 90°	4372.0	76.7	100.0
90° - 180°	0.0	0.0	0.0
0° - 180°	4372.0	76.7	100.0

Zonal Lumen Summary			
Zone	Lumens	% Lamp	% Fixture
0° - 30°	1982.1	23.2	30.9
0° - 40°	3413.2	39.9	53.1
0° - 60°	5866.8	68.6	91.4
0° - 90°	6422.1	75.1	100.0
90° - 180°	0.0	0.0	0.0
0° - 180°	6422.1	75.1	100.0

Zonal Lumen Summary			
Zone	Lumens	% Lamp	% Fixture
0° - 30°	2650.0	23.2	35.1
0° - 40°	4348.4	38.1	57.6
0° - 60°	7076.5	62.1	93.7
0° - 90°	7551.8	66.2	100.0
90° - 180°	0.0	0.0	0.0
0° - 180°	7551.8	66.2	100.0