

## FEATURES & SPECIFICATIONS

**INTENDED USE** — Our recessed LED module is the most economical means to create a well lit environment with exceptional energy efficiency and near zero maintenance. Great for retrofit into existing downlight cans or new construction and remodel applications. Compliant friction clip retention allows fitment into nearly 100% of installed cans. The LED module maintains at least 70% light output for 35,000 hours. Indoor and Outdoor Use.

**CONSTRUCTION** — Aluminum spun reflector with deep regression for reduced glare. Combined LED and driver printed circuit board attached. Inner reflector cone funnels light through the pressed-in diffused lens.

**OPTICS** — Diffused lens at end of mixing chamber to provide even light distribution for general illumination, equivalent to 65W BR30 Lamp.

Wide flood beam angle at > 45°.

**ELECTRICAL** — Center 2 Edge™ (patent pending) technology created for a single point source. Primary power disconnect provided for simple connection to a dedicated LED connector in the housing.

Dimming down to 10%. For compatible dimmers, refer to [Compatible Dimmers Chart](#).

700-lumen E series has an input wattage of 10 watts, 70 lumens per watt, equivalent to 65-watt incandescent.

E Series' patent pending driver has zero inrush which allows power loads to be calculated with actual rated wattages.

Example: 60 units of 4BEMW LED fixtures can be installed in line with a 600-watt dimmer. 600W/10W = 60 fixtures.

**INSTALLATION** — Suitable for installation in standard height rough-in sections.

E26 socket adaptor and ships standard, except in the state of California.

Friction clips allow fitment into cans with an inside diameter of 4.0" to 4.5".

**LISTINGS** — CSA certified to US and Canadian safety standards. Can be used to comply with California Title 24 Part 6 High Efficacy LED Light Source Requirements. Wet location listed. WSEC ASTM E283 for Air-Tight (with IC housings).

**WARRANTY** — 5-year limited warranty. This is the only warranty provided and no other statements in this specification sheet create any warranty of any kind. All other express and implied warranties are disclaimed. Complete warranty terms located at:

[www.acuitybrands.com/support/warranty/terms-and-conditions](http://www.acuitybrands.com/support/warranty/terms-and-conditions)

**NOTE:** Actual performance may differ as a result of end-user environment and application.

All values are design or typical values, measured under laboratory conditions at 25 °C.

Specifications subject to change without notice.

**PATENTS PENDING.**

Catalog Number
Notes
Type

### LED Recessed Downlighting

# 4BE/4SE



4BEMW



4SEMW

4" LED Module

IC/Non-IC  
Retrofit



E26 adaptor

#### Specifications

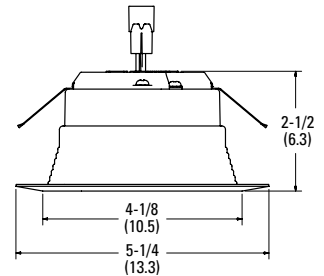
Aperture: 4-1/8 (10.5)

Ceiling opening: Determined by rough-in

Overlap trim: 5-1/4 (13.3)

Height: 2-1/2 (6.3)

All dimensions are inches (centimeters) unless otherwise indicated.



### ORDERING INFORMATION

All configurations of this product are considered "standard" and have short lead times.

**Example:** 4BEMW LED 27K 90CRI

Series/Finish	Lamp	CCT / W / Lumens <sup>1</sup>	CRI	Voltage	Options
4BEMW 4" Baffle LED module, matte white	LED	27K 2700K / 9.8W / 650L <sup>5</sup>	90CRI 90CRI	(blank) 120V	L/SKTWHIP No E26 Adapter (CA only) <sup>3</sup>
4SEMW 4" Smooth LED module, matte white		30K 3000K / 9.8W / 700L			
		40K 4000K / 9.8W / 720L			
		50K 5000K / 9.8W / 700L <sup>2</sup>			

#### Accessories: Order as separate catalog number.

RK2 CG52178 E26 E SERIES SKT ADAPTER U	E26 Adapter (Single Unit Pack)
RK2 CG52178 E26 E SERIES SKT ADAPTER J10	E26 Adapter (Pack of 10)
RK2 CG52178 E26 E SERIES SKT ADAPTER J25	E26 Adapter (Pack of 25)

#### Notes

- 1 Total system delivered lumens.
- 2 5000K available in Smooth option only.
- 3 L/SKTWHIP must be selected for product shipping to California.
- 4 Must be ordered on a separate line.
- 5 2700K and 3500K available in Baffle option only.

# 4" LED Module

Housing options: Order as separate catalog number	
QC4	Quick Connect 4" LED new construction downlight
QC4R	Quick Connect 4" LED Remodel Downlight
IC1	4" new construction housing
IC1FW LEDT24	4" fire-rated dedicated LED new construction housing

Pairs perfectly with Juno housings for a complete downlight solution: Order housings as separate catalog number.

## QC4 Series - New Construction Quick Connect LED Housing



## QC4R Series - Remodel Quick Connect LED Housing



## IC1FW LEDT24 - Firewall Fire Rated Quick Connect LED Housing



### Accessories: Order as separate catalog number

**LEDRETROWHIP** Replacement E26 screw base adapter for installation into incandescent housings

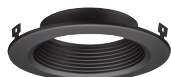


## TRIM INSERTS

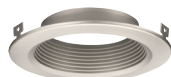
TRIM INSERTS (for field configuration; ordered separately)

Example: 4BEMB R4

Series/Finish				Packaging	
4BEMB	4" Baffle, Matte Black	4SEMB	4" Smooth, Matte Black	R4	Retail Pack of 4 units
4BEBN	4" Baffle, Brush Nickel	4SEBN	4" Smooth, Brush Nickel		
4BEORB	4" Baffle, Oil-Rubbed Bronze	4SEORB	4" Smooth, Oil-Rubbed Bronze		



4" Baffle, Matte Black (4BEMB)



4" Baffle, Brush Nickel (4BEBN)



4" Baffle, Oil-Rubbed Bronze (4BEORB)



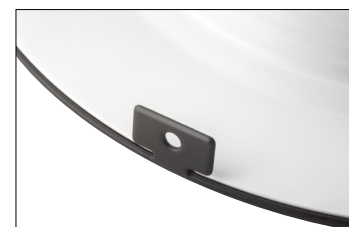
4" Smooth, Matte Black (4SEMB)



4" Smooth, Brush Nickel (4SEBN)



4" Smooth, Oil-Rubbed Bronze (4SEORB)



Pre-Install color finish trim insert over white 4" E Series Module.



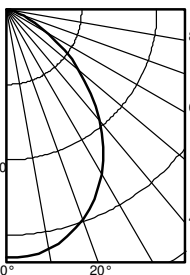
Press down color finish tabs for post-installation to create final LED 4" module.

# 4" LED Module

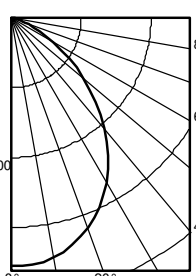
## PHOTOMETRICS

Distribution Curve	Distribution Data	Output Data	Coefficient of Utilization	Illuminance Data at 30" Above Floor for a Single Luminaire
--------------------	-------------------	-------------	----------------------------	--

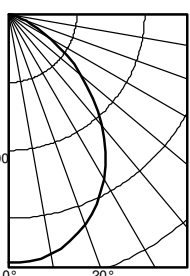
**4BEMW LED, 27K, input watts: 9.8, delivered lumens: 656, LM/W = 66, test no. ISF 35431, tested in accordance with IESNA LM 79-08**

	Ave Lumens		Zone	Lumens	% Lamp	pf pc pw	80%			20% 70%			50%			Initial FC		50% beam - 59.8°	10% beam - 100.2°		
							50%	30%	10%	50%	30%	10%	50%	30%	10%						
	0	330	0° - 30°	246.3	37.6	0	119	119	119	116	116	116	111	111	111	Mounting					
	5	329	0° - 40°	385.5	58.8	1	107	103	100	105	101	99	100	98	95	Height	Center			Diameter	FC
	15	312	0° - 60°	591.1	90.1	2	95	90	85	94	88	84	90	86	82	8.0	10.9	6.3	5.5	13.1	1.1
	25	278	0° - 90°	655.8	100.0	3	86	79	73	84	78	72	81	76	71						
	35	224	90° - 120°	0.0	0.0	4	77	69	63	76	69	63	73	67	62						
	45	158	90° - 130°	0.0	0.0	5	70	62	56	69	61	56	67	60	55						
	55	94	90° - 150°	0.0	0.0	6	64	55	50	63	55	49	61	54	49						
	65	41	90° - 180°	0.0	0.0	7	58	50	45	57	50	44	56	49	44	12.0	3.7	10.9	1.8	22.7	0.4
	75	16	0° - 180°	655.8	*100.0	8	53	46	40	53	45	40	51	45	40	14.0	2.5	13.2	1.2	27.5	0.2
	85	5	*Efficiency			9	49	42	37	49	41	37	48	41	36	16.0	1.8	15.5	0.9	32.3	0.2
	90	0				10	46	38	33	45	38	33	44	38	33						

**4BEMW LED, 30K, input watts: 9.8, delivered lumens: 706, LM/W = 71, test no. ISF 35431P1, tested in accordance with IESNA LM 79-08**

	Ave Lumens		Zone	Lumens	% Lamp	pf pc pw	80%			20% 70%			50%			Initial FC		50% beam - 59.8°	10% beam - 100.2°		
							50%	30%	10%	50%	30%	10%	50%	30%	10%						
	0	355	0° - 30°	265.3	37.6	0	119	119	119	116	116	116	111	111	111	Mounting					
	5	355	0° - 40°	415.1	58.8	1	107	103	100	105	101	99	100	98	95	Height	Center				
	15	336	0° - 60°	636.5	90.1	2	95	90	85	94	88	84	90	86	82	Beam	Diameter	FC	Diameter	FC	
	25	299	0° - 90°	706.3	100.0	3	86	79	73	84	78	72	81	76	71	8.0	11.7	6.3	5.9	13.1	1.2
	35	241	90° - 120°	0.0	0.0	4	77	69	63	76	69	63	73	67	62						
	45	170	90° - 130°	0.0	0.0	5	70	62	56	69	61	56	67	60	55						
	55	101	90° - 150°	0.0	0.0	6	64	55	50	63	55	49	61	54	49						
	65	44	90° - 180°	0.0	0.0	7	58	50	45	57	50	44	56	49	44						
	75	17	0° - 180°	706.3	*100.0	8	53	46	40	53	45	40	51	45	40	10.0	6.3	8.6	3.2	17.9	0.6
	85	5	*Efficiency			9	49	42	37	49	41	37	48	41	36	12.0	3.9	10.9	2.0	22.7	0.4
	90	0				10	46	38	33	45	38	33	44	38	33	14.0	2.7	13.2	1.3	27.5	0.3

**4BEMW LED, 40K, input watts: 9.8, delivered lumens: 727, LM/W = 73, test no. ISF 35431P3, tested in accordance with IESNA LM 79-08**

	Ave Lumens		Zone	Lumens	% Lamp	pf pc pw	80%			20% 70%			50%			Initial FC		50% beam - 59.8°	10% beam - 100.2°		
							50%	30%	10%	50%	30%	10%	50%	30%	10%						
	0	366	0° - 30°	272.8	37.6	0	119	119	119	116	116	116	111	111	111						
	5	365	0° - 40°	427.0	58.8	1	107	103	100	105	101	99	100	98	95						
	15	346	0° - 60°	654.7	90.1	2	95	90	85	94	88	84	90	86	82						
	25	308	0° - 90°	726.5	100.0	3	86	79	73	84	78	72	81	76	71						
	35	248	90° - 120°	0.0	0.0	4	77	69	63	76	69	63	73	67	62						
	45	175	90° - 130°	0.0	0.0	5	70	62	56	69	61	56	67	60	55						
	55	104	90° - 150°	0.0	0.0	6	64	55	50	63	55	49	61	54	49						
	65	46	90° - 180°	0.0	0.0	7	58	50	45	57	50	44	56	49	44						
	75	18	0° - 180°	726.5	*100.0	8	53	46	40	53	45	40	51	45	40						
	85	5	*Efficiency			9	49	42	37	49	41	37	48	41	36						
	90	0				10	46	38	33	45	38	33	44	38	33						

# 4" LED Module

## ADDITIONAL DATA 4BEMW/4SEMW LED 27K

4" ENERGY DATA	
Lumens	<b>650</b>
Color Temperature	2700K
CRI	90
Lu/Watts	65
Operating temp	-20°C (-4°F) to 40°C (104°F)
EMI/RFI	FCC Title 47 CFR, Part 15, Class B
Sound rating	Class A Standards
Input voltage	120V
Min. power factor	0.99
Input frequency	50/60 Hz
Rated wattage	9.8W
Input power	9.8W
Input current	0.08A

## ADDITIONAL DATA 4BEMW/4SEMW LED 30K

4" ENERGY DATA	
Lumens	<b>700</b>
Color Temperature	3000K
CRI	90
Lu/Watts	70
Operating temp	-20°C (-4°F) to 40°C (104°F)
EMI/RFI	FCC Title 47 CFR, Part 15, Class B
Sound rating	Class A Standards
Input voltage	120V
Min. power factor	0.99
Input frequency	50/60 Hz
Rated wattage	9.8W
Input power	9.8W
Input current	0.08A

## ADDITIONAL DATA 4BEMW/4SEMW LED 40K

4" ENERGY DATA	
Lumens	<b>720</b>
Color Temperature	4000K
CRI	90
Lu/Watts	70
Operating temp	-20°C (-4°F) to 40°C (104°F)
EMI/RFI	FCC Title 47 CFR, Part 15, Class B
Sound rating	Class A Standards
Input voltage	120V
Min. power factor	0.99
Input frequency	50/60 Hz
Rated wattage	9.8W
Input power	9.8W
Input current	0.08A

## ADDITIONAL DATA 4SEMW LED 50K

4" ENERGY DATA	
Lumens	<b>700</b>
Color Temperature	5000K
CRI	90
Lu/Watts	70
Operating temp	-20°C (-4°F) to 40°C (104°F)
EMI/RFI	FCC Title 47 CFR, Part 15, Class B
Sound rating	Class A Standards
Input voltage	120V
Min. power factor	0.99
Input frequency	50/60 Hz
Rated wattage	9.8W
Input power	9.8W
Input current	0.08A

## LIGHTING FACTS

