

FEATURES & SPECIFICATIONS

INTENDED USE — Ideal for use in food and beverage processing, cold storage, natatoriums and garden centers. Fiberglass enclosure protects fixture while remaining easy to service and clean. Certain airborne contaminants can diminish the integrity of acrylic and/or polycarbonate. [Click here for Acrylic/Polycarbonate Compatibility table for suitable uses.](#)

CONSTRUCTION — One-piece 5VA rated fiberglass housing with continuous poured-in-place, closed-cell gasket. Housing includes integrated heat management rail to optimize LED performance in warmer ambient temperatures. Three piece captive latches lock onto the housing to keep latches from becoming displaced during strenuous cleaning.

OPTICS — Injection-molded acrylic, impact-resistant diffuser (.080" thick), available in clear or frosted, features side lineal prisms and frosted ends (clear). Frosted lens recommended for lower mounting heights and enhanced visual comfort. UV stabilized polycarbonate diffuser option available (.080" thick) for increased impact resistance. Three piece stainless steel latches (12) keep lens securely fastened.

ELECTRICAL — Utilizes high-efficiency LEDs mounted to core circuit boards. High-efficiency drivers operate 120-480 volt offered with 0-10 volt dimming, allowing granular control when coupled with wireless networking controls. Integral 6kV/3kA surge protection, tested in accordance to IEEE/ANSI standards. Expected service life of 60,000 hours at 80% lumen maintenance (L80); predicted life of more than 100,000 hours.

INSTALLATION — Luminaire can be ceiling or suspend mounted. Power connection is easily accommodated through pre-drilled holes at each end, watertight plugs ship standard on each end. Stainless steel mounting straps (standard), included for suspension with aircraft cable (cable not included). Optional stainless steel V-hooks available for chain hanging (chain not included). Mounting straps also accommodate RMKSS or RMKZP accessory for surface mounting.

LISTINGS — CSA Certified to UL and C-UL standards for ambient temperatures from -40°F (-40°C) to 104°F (40°C) when suspended and up to 30°C when surface mounted. Suitable for wet location. Covered ceiling not required to maintain wet location listing or IP ratings. IP65, IP66 and IP67 rated and certified to meet NSF Splash Zone 2. NEMA 4X rated. 1500 PSI hose-down.

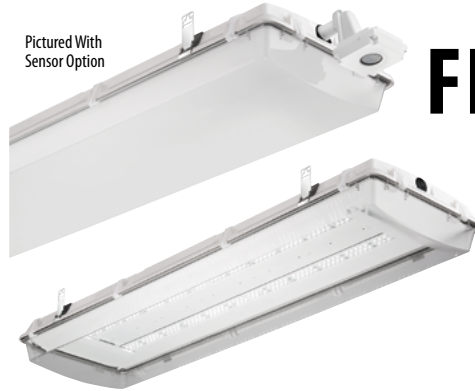
DesignLights Consortium® (DLC) qualified product. Not all versions of this product may be DLC qualified. Please check the DLC Qualified Products List at www.designlights.org/OPL to confirm which versions are qualified.

WARRANTY — 5-year limited warranty. Complete warranty terms located at www.acuitybrands.com/CustomResources/Terms_and_conditions.aspx

NOTE: Actual performance may differ as a result of end-user environment and application. All values are design or typical values, measured under laboratory conditions at 25 °C. Specifications subject to change without notice.

Catalog Number
Notes
Type

High-Pressure Hose-Down



FHE LED

FOOD PROCESSING/
COLD STORAGE

Specifications

Length: 52.0 (132.0)

Width: 14-5/8 (37.1)

Depth: 6 (15.2)

Weight: 36 lbs. (12.7 kg)

All dimensions are inches (centimeters) unless otherwise specified.



A+ Capable Luminaire

This item is an A+ capable luminaire, which has been designed and tested to provide consistent color appearance and out-of-the-box control compatibility with simple commissioning.

- All configurations of this luminaire meet the Acuity Brands' specification for chromatic consistency
- This luminaire is part of an A+ Certified solution for nLight® or XPoint™ Wireless control networks marked by a shaded background*

To learn more about A+, visit www.acuitybrands.com/aplus.

*See ordering tree for details

FHE LED High-Pressure Hose-Down, LED



A+ Capable options indicated by this color background.

ORDERING INFORMATION

Lead times will vary depending on options selected. Consult with your sales representative.

Example: FHE 18000LM ACL MD MVOLT GZ10 50K 80CRI

FHE		Lumens		Diffuser		Distribution		Voltage		Driver		Color temperature ²			
FHE	15" X 52"	9000LM	9,000 lumens	ACL	Clear acrylic	ND	Narrow distribution	MVOLT	MVOLT; 120-277V	GZ10	0-10V dimming	30K	3000 K		
		12000LM	12,000 lumens	PCL	Clear polycarbonate	MD	Medium distribution	HVOLT	HVOLT; 347V-480V, 60HZ only			35K	3500 K		
		15000LM	15,000 lumens	FST	Frosted acrylic			120	120V			40K	4000 K		
		18000LM	18,000 lumens					277	277V			50K	5000 K		
		20000LM	20,000 lumens					347	347V (60HZ only)						
		24000LM	24,000 lumens ¹					480	480V (60HZ only)						
Color rendering index		Options ³													
70CRI	70 CRI	CS89	Cord set - NEMA type STW 16/3, 6', 600V, white, no plug, wet location				PLCL	Polymetric latch,							
80CRI	80 CRI						BSL722	Bodine [®] emergency LED battery pack for 0°C and up ^{6,7}							
90CRI	90 CRI	CS89L12	Cord set - NEMA type STW 16/3, 12', 600V, white, no plug, wet location				BSL722C	Bodine [®] emergency LED battery pack for -20°C and up ^{6,7}							
		CS88	Cord set - Brad Harrison 3P male straight 600V molded plug, 6' type ST00W yellow PVC cord, 16/3				SF	Single Fusing ⁶							
		CS88L12	Cord set - Brad Harrison 3P male straight 600V molded plug, 12' type ST00W yellow PVC cord, 16/3				DF	Double Fusing ⁶							
		CS88R	Cord set - Brad Harrison receptacle				MSI10XAWL10M DSCXAWL	Low mount XPoint™ wireless integral motion sensor, on/off operation for motion sensing, override off due to daylight ⁸							
		MHKB	Stainless steel V-hook and brackets				MSI6XAWL10M DSCXAWL	High mount XPoint™ wireless integral motion sensor, on/off operation for motion sensing, override off due to daylight ⁸							
		WLF	Wet location fitting ⁴				MSI6NWL	High mount 360° motion sensor, on/off, wet location ⁶							
		WLFEND	Wet location fitting (one end) ⁴				MSI62L3VWL	High mount 360° motion sensor, on/off with second time-out period, goes to a dimmed state before turning off max/min dim setting, wet location ⁶							
		WLFEND2	Wet location fitting (both ends) ^{4,5}				MSI10NWL	Low mount 360° motion sensor, on/off, wet location ⁶							
		MSZP	Mounting strap, zinc plated				MSI102L3VWL	Low mount 360° motion sensor, on/off with second time-out period, goes to a dimmed state before turning off max/min dim setting, wet location ⁶							
		RMKSS	Rigid mount bracket, stainless steel				XAD	XPoint™ wireless controller, 0-10V dimming ^{6,8}							
		RMKZP	Rigid mount bracket, zinc plated												
		EMK	End mount suspension bracket												

Accessories: Order as separate catalog number.			
FHEMHKB	Stainless steel V-hook and brackets	MHHK120SS	10' single leg aircraft cable, stainless steel ^{10,11}
FHEEMK	End mount suspension bracket ⁹	FHEACT120	10' Y-toggle aircraft cable
FHERMKZP	Rigid mounting bracket, zinc plated	FHEACT240	20' Y-toggle aircraft cable
FHERMKSS	Rigid mounting bracket, stainless steel	RK1 T10DRV	Torx™ T10 screwdriver for TRS option
MHCH36	3' Double chain ¹⁰		
MHHK120	10' single leg aircraft cable ^{10,11}		

Notes

- Not available with BSL722 or BSL722C option.
- The CCT value provided is of lamp source and actual CCT will vary upon levels.
- For additional options consult factory.
- Fixture will no longer be NEMA 4X rated.
- Not available with cord, sensor or photocell options.
- Must specify voltage. Must specify voltage. Not available MVOLT or HVOLT.
- Available in 120-277V only.
- Utilizes a step down transformer when ordered with 347V or 480V.
- Not available with HVOLT, 347, or 480.
- For use with MHKB option.
- For use with EMK option.

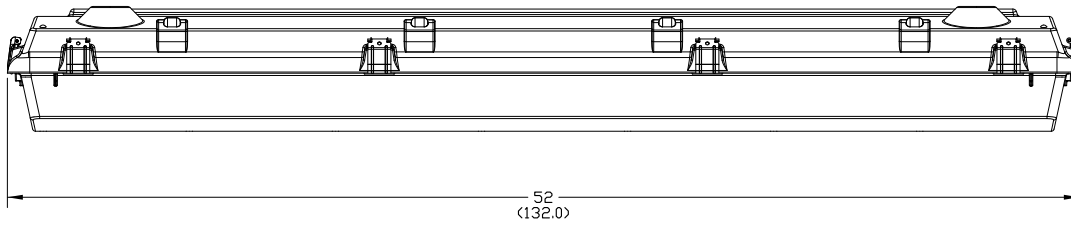
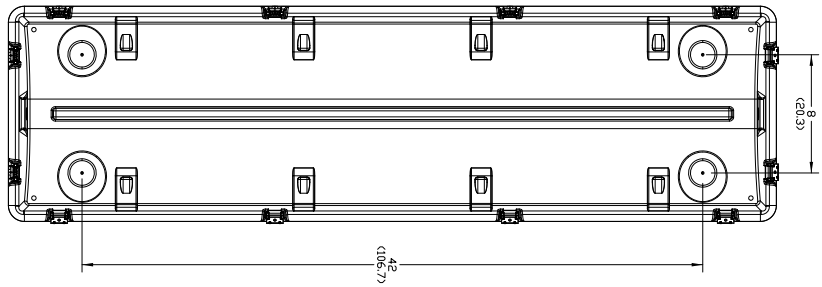
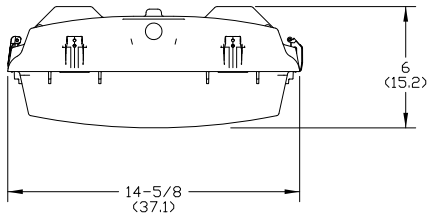
FHE LED High-Pressure Hose-Down, LED

FHE Performance Chart										
Package	Input Watts	Medium Color Temp	Maximum Ambient Temperature Suspended	70CRI		80CRI		90CRI		Comparable Light Source
				Clear Acrylic	Frosted Acrylic	Clear Acrylic	Frosted Acrylic	Clear Acrylic	Frosted Acrylic	
9000LM	75	30K	-40°F to 104°F (-40°C to 40°C)	9643	9458	8765	8597	7073	6937	2-lamp T5HO
		35K		9707	9521	8943	8772	7344	7203	2-lamp T5HO
		40K		9921	9731	9186	9010	7558	7413	2-lamp T5HO
		50K		9921	9731	9186	9087	7651	7504	2-lamp T5HO
12000LM	95	30K	-40°F to 104°F (-40°C to 40°C)	13665	13403	12421	12182	10023	9831	4-lamp T8, 250W HID
		35K		13756	13492	12673	12430	10408	10208	4-lamp T8, 250W HID
		40K		14059	13790	13017	12768	10711	10506	4-lamp T8, 250W HID
		50K		14059	13661	13129	12877	10843	10635	4-lamp T8, 250W HID
15000LM	111	30K	-40°F to 104°F (-40°C to 40°C)	15736	15434	14303	14029	11543	11321	4-lamp T5HO, 6-lamp T8
		35K		15841	15537	14594	14314	11985	11755	4-lamp T5HO, 6-lamp T8
		40K		16190	15880	14990	14703	12335	12098	4-lamp T5HO, 6-lamp T8
		50K		16190	15880	15118	14829	12486	12247	4-lamp T5HO, 6-lamp T8
18000LM	146	30K	-40°F to 104°F (-40°C to 40°C)	19603	19227	17818	17476	14379	14103	4-lamp T5HO, 6-lamp T8, 400W HID
		35K		19733	19355	18181	17832	14930	14644	4-lamp T5HO, 6-lamp T8, 400W HID
		40K		20168	19782	18674	18316	15366	15071	4-lamp T5HO, 6-lamp T8, 400W HID
		50K		20168	19782	18833	18472	15554	15256	4-lamp T5HO, 6-lamp T8, 400W HID
20000LM	171	30K	-40°F to 104°F (-40°C to 40°C)	22049	21626	200042	19657	16173	15863	4-lamp T5HO, 6-lamp T8, 400W HID
		35K		22196	21770	20450	20057	16794	16472	4-lamp T5HO, 6-lamp T8, 400W HID
		40K		22685	22250	21004	20602	17283	16952	4-lamp T5HO, 6-lamp T8, 400W HID
		50K		22685	22250	21184	20778	17495	17160	4-lamp T5HO, 6-lamp T8, 400W HID
24000LM	224	30K	-40°F to 104°F (-40°C to 40°C)	25549	25059	23223	22777	18741	18381	6-lamp T5HO, 8-lamp T8
		35K		25719	25226	23696	23241	19459	19086	6-lamp T5HO, 8-lamp T8
		40K		26286	25782	24339	23872	20027	19643	6-lamp T5HO, 8-lamp T8
		50K		26286	25782	24547	24076	20273	19884	6-lamp T5HO, 8-lamp T8

FHE LED High-Pressure Hose-Down, LED

DIMENSIONS

Inches (centimeters). Subject to change without notice.



MOUNTING ACCESSORIES



MHHK (requires two pair)



FHEACT



V-hook, chain



FHEEMK – End mount
suspension bracket**



FHERMKSS – Rigid mounting
bracket, stainless steel (made
from 304 stainless steel)
FHERMKZP - Rigid mounting
bracket, zinc plated

PHOTOMETRICS

See www.lithonia.com for photometry reports.

FHE LED High-Pressure Hose-Down, LED

SBOR - WET LOCATION Motion Sensor (see www.sensorswitch.com for additional information)

- 360° coverage
- On/Off dim
- Photocell optional
- IP66 rated
- Photocell and 0-10VDC dimming options.

Fixture sensor nomenclature	SBOR sensor nomenclature
For shortest lead times use one of the following SBOR configurations	
MSI10NWL	SBOR 10 OEX EB3 WH
MSI102L3VWL	SBOR 10 OEX D EB3 WH 3V
MSI10NWL DSCNWL	SBOR 10 OEX P EB3 WH



MOTION SENSOR

ORDERING INFORMATION

Lead times will vary depending on options selected. Consult with your sales representative.

Example: MSI6NWL

Series	Lens option	Dimming	Minimum dim level	Environmental factors
MSI Passive infrared occupancy sensor	6 High mount, 360°	N On/off	0V Off	WL Wet location
	10 Low mount, 360°	2LXX Bi level range ¹	1V 1VDC	
		CXX Continuous dim range ¹	2V 2VDC	
		XA Xpoint wireless signal to external system	3V 3VDC	
			4V 4VDC	
			5V 5VDC	

PHOTOCELL (must be ordered with MSI motion sensor, see above fixture sensor nomenclature table)

ORDERING INFORMATION

Lead times will vary depending on options selected. Consult with your sales representative.

Example: DSCNWL

Series	Dimming	Environmental factors
DSC Passive infrared occupancy sensor with photocell	N On/off	WL Wet location
	2LXX Bi level range ¹	
	CXX Continuous dim range ¹	
	XA Xpoint wireless signal to external system	

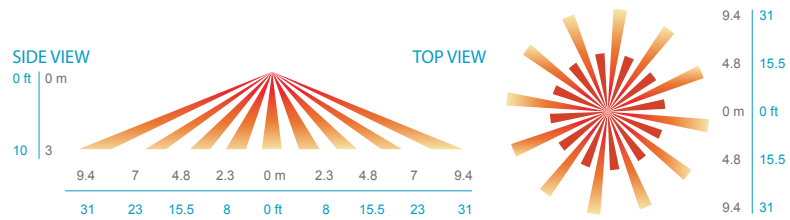
Notes

¹ XX denotes dimming range.(Ex. 3V, 4V, etc.)

COVERAGE PATTERNS

PARKING GARAGE / LOW MOUNT APPLICATIONS

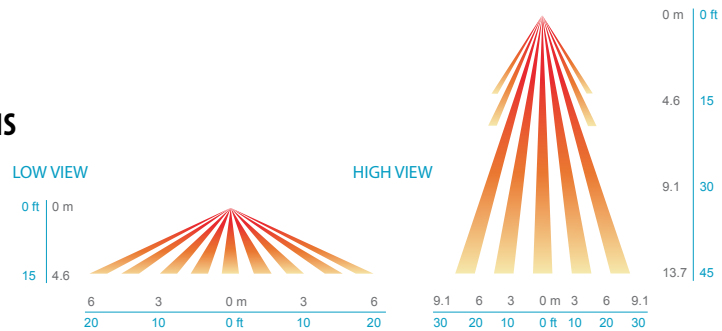
In general, the SBOR 10 is recommended for 8-15 ft (2.44-4.57 m) mounting and provides a coverage area radius for walking motion of greater than 2x the mounting height. The SBOR 10 ODP is ideal for parking garage and low pole mount applications. When mounted 10 ft high, for example, on a luminaire in a parking garage, the sensor's coverage for walking motion extends out 30 ft in a 360° pattern. This closely matches the lighting distribution of a typical parking garage luminaire. When mounted to a light pole, for example, in a parking lot or along a path, the sensor provides 270° of coverage (90° is blocked by the pole). Note, walking askew to sensor typically results in earlier detection than walking directly at sensor.



Coverage Pattern of Low Mount Lens Option (SBOR 10)

SITE & AREA LIGHTING / HIGH MOUNT APPLICATIONS

The SBOR 6 is intended for higher pole mount applications, between 15-30 ft (4.57-9.14 m), and provides a coverage area radius for walking motion of 15-20 ft (4.57-6.10 m). When mounted to a pole the sensor provides 270° of coverage (90° is blocked by the pole).



Coverage Pattern of High Mount Lens Option (SBOR 6)