

FEATURES & SPECIFICATIONS

INTENDED USE

Provides an LED lighting platform to deliver general or task lighting for residential and light commercial applications. Light engine delivers long life and excellent color to ensure a quality, low-maintenance light installation. Ideal for use in bathrooms, lavatories, hallways, corridors, stairways, utility areas and more.

CONSTRUCTION

The Contemporary Arrow Vanity with Switchable White (3000K, 3500K, 4000K), is constructed of an acrylic diffuser with housings available in a brushed nickel finish. The included canopy/junction box cover is removable for a more low-profile look (2' length only). The white acrylic diffuser provides even illumination and softens the appearance of the LEDs for improved aesthetics.

OPTICS

The FMVCALS Contemporary Arrow Vanity has an integrated switch to select 3000K, 3500K or 4000K color temperature at the time of installation.

2' delivers 1500 lumens at 3000K CCT with 50,000 hours of life. See table below for delivered lumens at the different CCT color switch settings.

Extruded acrylic diffuser is of highly transmissive material to minimize LED image and provides high-angle brightness control.

ELECTRICAL

Change to "Long-life LEDs, coupled with a multivolt and dual dimmable capable driver, provide extended service life. Standard input = 18 watts, (2'). Fixture is rated to deliver L70 performance at 50,000 hours and operates at 120-277 volts.

This Fixture is dimmable by either triac or 0-10V dimming. Use with approved triac or 0-10V dimmer only.

LISTINGS

CSA Listed to US and Canadian safety standards. Listed for damp locations. Can be used to comply with California Title 24 Part 6 High Efficacy LED Light Source Requirements.

WARRANTY

5-year limited warranty. This is the only warranty provided and no other statements in this specification sheet create any warranty of any kind. All other express and implied warranties are disclaimed.

Complete warranty terms located at:

www.acuitybrands.com/support/warranty/terms-and-conditions

NOTE: Actual performance may differ as a result of end-user environment and application.

All values are design or typical values, measured under laboratory conditions at 25 °C.

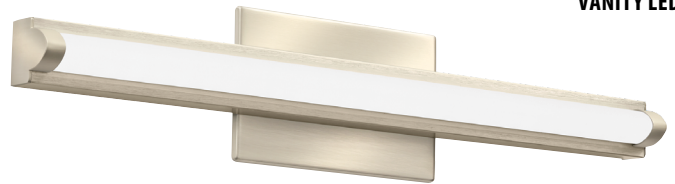
Specifications subject to change without notice.

Catalog Number
Notes
Type

Decorative Indoor

Contemporary Arrow Vanity with Switchable White Color Temperature

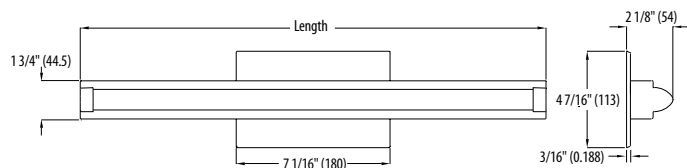
VANITY LED



ADA

SPECIFICATIONS	2FT
Length	21-7/16 (545)
Weight	2 (.91)
3000K Lumens (LPW)	1500 (84)
3500K Lumens (LPW)	1700 (97)
4000K Lumens (LPW)	1700 (94)

All dimensions are inches (millimeters) unless otherwise indicated. Weights are pounds (kilograms).



ORDERING INFORMATION

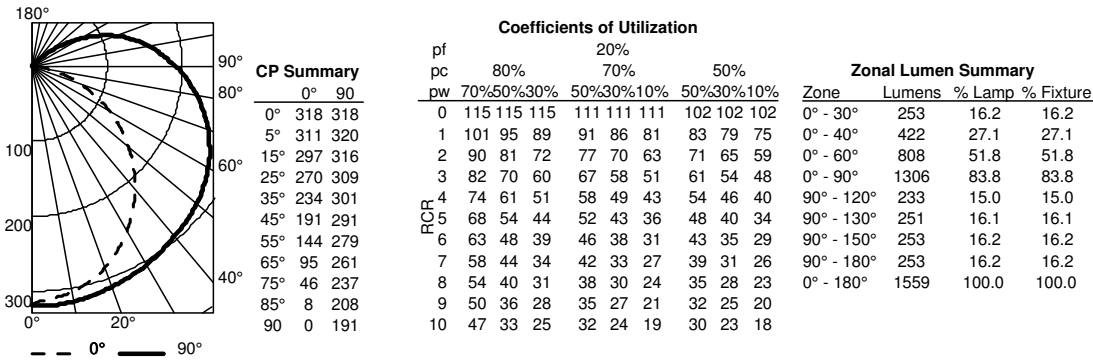
Example: FMVCALS 24IN MVOLT 30K35K40K 90CRI BN

Series	Length	Voltage	Color temperature	CRI	Finish
FMVCALS Contemporary Arrow Vanity	24IN 2' Nominal	MVOLT MVOLT (120V-277V)	30K35K40K	90CRI >90	BN Brushed Nickel

PHOTOMETRICS

Distribution Curve	Distribution Data	Output Data	Coefficient of Utilization	Illuminance Data at 30" Above Floor for a Single Luminaire
--------------------	-------------------	-------------	----------------------------	--

FMVCALS 24IN, input watts:18.08, test no. ISF 37683



COMPATIBLE DIMMERS	
The FMVCALS is designed to operate with most standard Triac Based dimmers and is compatible with 0-10v dimming systems. The following is a list of dimmers tested and does not imply any guarantee or warranty of compatibility with a particular application. Unlisted dimmers do not imply non-compatibility.	
Manufacturer	Part number(s)
Lutron	DVELV-300P
	300P SELV
	NTELV-300P
	NLV-600
Leviton	6633-PA
	6615-P
Synergy/Leviton	ISD 400 ELV 120 / IPE04