

FEATURES & SPECIFICATIONS

INTENDED USE

Provides general illumination in residential and light commercial applications. Ideal for use in workshops, utility rooms, and garages.

CONSTRUCTION

The steel Wire Guard helps provide protection to the fixture bulb area. Includes a 5' power cord, 5A Max. convenience outlet and a pull chain power switch. The residential electronic ballast (120V 60Hz 1.50 Amps) starts reliably down to 0°F For use on non-dimmable switches only.

ELECTRICAL

Utilizes (4) 32W linear T8 fluorescent lamps (not included).

INSTALLATION

Fully assembled, ready to install. Chain mount to ceiling using the 12" mounting chains. All mounting hardware is included.

LISTINGS

cUL Listed to US and Canadian safety standards.

WARRANTY

1-year limited warranty. Complete warranty terms located at: www.acuitybrands.com/CustomerResources/Terms_and_conditions.aspx

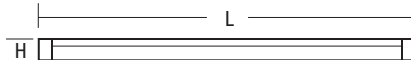
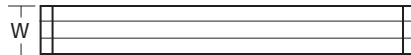
NOTE: Actual performance may differ as a result of end-user environment and application. Specifications subject to change without notice.

Specifications

Length: 48 (121.9)

Width: 12 (30.5)

Height: 4 (10.2)



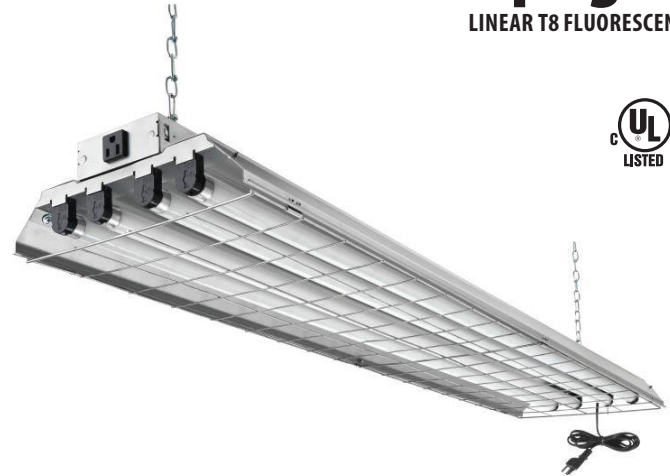
All dimensions are in inches (centimeters) unless otherwise indicated.

Catalog Number
Notes
Type

Indoor General Purpose

4L Grid Shoplight

LINEAR T8 FLUORESCENT



ORDERING INFORMATION

Example: 1284GRD RE

1284GRD	RE
Series	Ballast/voltage
1284GRD Requires (4) T8 fluorescent lamps (not included)	RE 120V residential electronic ballast