

FEATURES & SPECIFICATIONS

INTENDED USE — Recessed housing rated IC for new construction only.

Approved for all ceiling and wiring types.

Approved for direct burial in insulation.

CONSTRUCTION — Air-tight standard. Tested to meet current energy codes.

Aluminum housing with galvanized steel pan.

Galvanized bar hangers span up to 24" o.c. and feature stepped shank nail and positioning guide with integral T-bar locks. Two locking screws hold fixture in position.

Galvanized steel junction box with four built in romex clamps; five 1/2" and two 3/4" knockouts with slots for pryout. Rated for through branch wiring.

Maximum 4 (2in 2out) No 12 AWG conductors. Rated for 90° C.

Ground wire provided.

Removable J-box doors for easy access.

ELECTRICAL — Durable medium base porcelain socket with nickel plated copper alloy screw shell and contact.

Socket clips to top of housing to prevent paint overspray in socket screw shell.

Socket attaches to reflector to ensure proper and consistent lamp position.

Thermal protection provided against improper lamp usage.

120 volt only.

INSTALLATION — Air-tight housing suitable for air-tight installations. Refer to energy codes for proper mounting installations.

2 x 8 wood joist or T-bar installation.

Expandable bar hangers allow for off-center mounting in wood joist or T-bar ceilings. Length of 25-1/4" maximum 13-1/4" minimum or cut to fit 9" on center joist construction.

Vertical adjustment of housing allows for flush mounting with ceiling face.

Suitable for ceilings up to 1-1/2" thick.

LISTINGS — UL Listed to US and Canadian safety standards. Damp location listing (See trim selection for wet location listing).

WARRANTY — 1-year limited warranty. This is the only warranty provided and no other statements in this specification sheet create any warranty of any kind. All other express and implied warranties are disclaimed. Complete warranty terms located at: www.acuitybrands.com/support/warranty/terms-and-conditions

Note: Actual performance may differ as a result of end-user environment and application. Specifications subject to change without notice.

Catalog Number
Notes
Type

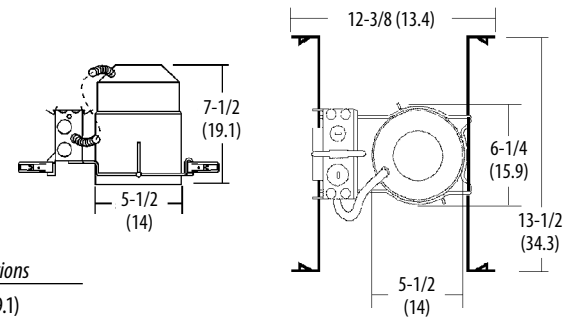
5" Housing

L5

INCANDESCENT

IC

New Construction



Specifications

Height: 7-1/2 (19.1)

Length: 13-1/2 (34.3)

Width: 12-3/8 (31.9)

Ceiling cutout: 5-1/2 (14)

All dimensions are inches (centimeters) unless otherwise indicated.

ORDERING INFORMATION

For shortest lead times, configure product using **bolded options**.

Example: L5 R6

L5	
Series	Packaging
L5	R6 Resale pack of six
	U Unit

Notes

See trim summary on reverse side for maximum wattages.

L5 5" New Construction Housing

Description	Maximum wattage ¹
Catalog number	

General/Task

Open Narrow Flange

502MW TOR Matte white



50 R20
65 BR30
75 PAR30²

IC/Non IC

Baffle Deep Narrow Flange

5B2 TOR Black, white flange

5B2MW TOR Matte white



50 R20 (white only)
65 BR30 (white only)
75 PAR30 (white only)
50 PAR30
60 PAR38

IC/Non IC

Notes

- 1 Maximum wattage listed. Lower wattage lamps may be used.
- 2 Short neck.