

OVERVIEW

The Power Sentry® constant power emergency drivers are technologically the most advanced, intelligent, and versatile class 2 emergency drivers available to the industry today. These drivers combine high quality and system reliability required for optimal compliance to NFPA 101 (Life Safety code) and deliver constant light output throughout the 90 minutes of code-required emergency operation in the event of a normal AC power loss. These emergency drivers are suitable for use in damp location luminaires.

Class 2 emergency drivers are compatible with any LED array that operates at a voltage of 10V to 55V (10W) or 20-55V (20W). This includes most Strips, Linear, Commercial Lay-ins, and Downlighting luminaires from any luminaire manufacturer.

The new constant power series incorporates the industry-preferred Power Sentry Double Isolation safeguard technology ensuring that no single fixture component failure or combination of abnormal operating conditions, including feedback, can compromise the functionality of the emergency driver. These drivers provide integrated self-diagnostics as a standard feature. Constant power emergency drivers are UL listed for universal field installation. All the constant power products comply with the CA Title 20 energy efficiency code and current NFPA 101 Life Safety code.

FEATURES

- Class 2, Constant power output over 90 minutes
- Two-wire universal AC input
- UL listed for universal field installation with any Class II rated luminaire. PS1055CP and PS1555CP in both standard form-factor and with the FMC option.
- CA Title 20 compliant
- Integrated self-diagnostics standard
- AC Activate eliminates need for manual activation—eliminating a common cause of costly service calls.
- Compact, low-profile form-factor for narrow driver channels
- Double Isolation safeguard technology helps protect against failures or feedback from other devices in the luminaire compromising the functionality of the emergency driver
- 5 year limited warranty

INSTALLATION

Mounts concealed within fixture wireway for clean appearance and protection against vandalism; or mounts on outside of fixture housing if internal space is limited utilizing the FMC option. One 1/2" hole in fixture channel permits mounting of test switch/pilot light behind fixture lens.

Compact size fits in a variety of LED fixtures: troffers, volumetric recessed, industrials, commercials and strips.

Unit wires two ways: on night light circuit (permanently energized) or on switchable circuit (unswitched circuit to battery charger and switched circuit to the fixture driver).

Polarized quick-connect pilot light / test switch assembly simplifies installation

Standardized mounting centers.

Meets current Life Safety Code (NFPA101), NEC (NFPA70) and OSHA standards UL924. CA Title 20 compliant.
UL listed for field installation.
UL1310 Certified

Warranty

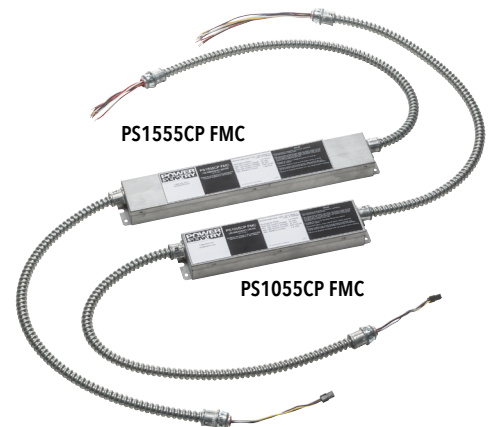
5-year limited warranty. Complete warranty terms located at:

www.acuitybrands.com/CustomerResources/Terms_and_conditions.aspx

Note: Actual performance may differ as a result of end-user environment and application. Specifications subject to change without notice.



Constant Power Emergency Drivers Standard Profile



A+ Capable Component

This product is an A+ enabling component when correctly applied with compatible Acuity Brands' Luminaires.

- This product has been interoperability tested with the luminaire and becomes part of the A+ Certified solution of the luminaire (see luminaire spec sheet for all A+ certified details)
- Field installation for these luminaires is A+ certified and luminaire warranty maintained when installed and wired per instructions

To learn more about A+, visit www.acuitybrands.com/aplus.



ORDERING INFORMATION

		Example: PS1055CP
Series		Options
PS1055CP	10W constant power	FMC Flexible Metal Conduit ²
PS1555CP	15W constant power ¹	FMC BKT Flexible Metal Conduit with Bracket/EMI filter for EPANL only ³
		FMC EMI Flexible Metal Conduit with EMI filter for CPANL only

ACCESSORIES: Order as separate catalog number.	
ELA PSDMT	Remote Mounting Tray for use with FMC options ⁴
ELA TSPLP SD	Remote or replacement test switch/pilot light (with plenum-rated cable) for self-diagnostics ⁴

Notes:

1. Not available with FMC BKT.
2. 24" with 6" wire lead length when ordered as job pack; 36" with 6" wire lead length when ordered with master pack.
3. Only available with PS1055CP for EPANL only. Order ELA PSDMT mounting tray accessory for remote mounting.
4. See Accessories specification sheets for details on other compatible devices [ELA-RTS-TSPLP-PSTSPSPRSB](#) and [ELA-PSMK-P-SMKSD-PSDMT-PSRME](#).

BATTERY

Lithium Iron-Phosphate	Voltage	Typical Shelf Life ¹	Typical Life ¹	Maintenance ²	Ambient temperature ³
PS1055CP	9.6	12 Months	5-7 Years	None	5° -50°C (41°-122°F)
PS1555CP	16				

Notes:

1. At 77°F Ambient temperature, charge/discharge cycles and prolonged full discharge may reduce useful life.
2. All life safety equipment, including emergency lighting for path of egress must be tested in accordance with all National Fire Protection Association (NFPA) and local codes. Failure to perform the required testing could jeopardize the safety of occupants and will void all warranties.
3. Ambient temperature range where unit will provide capacity for 90 minutes. Higher and lower temperatures affect life and capacity.

SPECIFICATIONS

	PS1055CP (UL and cUL Listed)	PS1555CP (UL and cUL Listed)
Input Voltage	120-277VAC; 50-60Hz	120-277VAC; 50-60Hz
Maximum Input Current	25mA	22mA
Output Voltage	15-55VDC	20-55VDC
Output Power	10 Watt Constant	15 Watt Constant
Maximum Output Current	660mA	750mA
Ambient temperature	5° - 50°C	5° - 50°C
	(41°-122°F)	(41°-122°F)

HOW TO ESTIMATE DELIVERED LUMENS IN EMERGENCY MODE

Use the formula below to estimate the delivered lumens in emergency mode

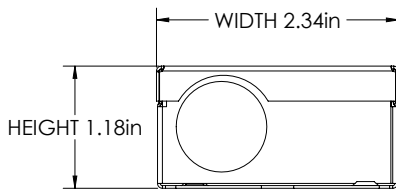
$$\text{Delivered Lumens} = 1.25 \times P \times \text{LPW}$$

P = Output power of emergency driver. P = 10W for PS1055CP

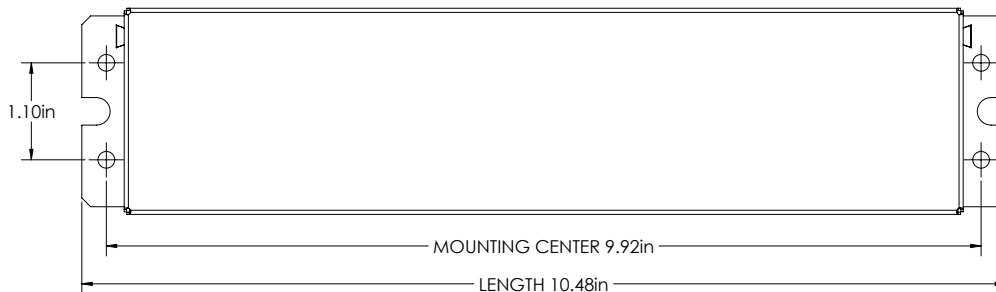
LPW = Lumen per watt rating of the luminaire. This information is available on the ABL luminaire spec sheet.

The LPW rating is also available at Designlight Consortium.

PS1055CP and PS1555CP with and without FMC



PS1055CP with and without FMC



PS1555CP with and without FMC

