



Catalog Number
Notes
Type

## FEATURES & SPECIFICATIONS

**INTENDED USE** — Specification grade emergency ballast to operate one or two lamps (4' or shorter) or one 8' lamp. Factory or field installed inside or outside (field only) fluorescent fixture to operate lamp(s) at reduced light output, providing optimum glare-free illumination for a minimum of 90 minutes upon interruption of normal power.

**CONSTRUCTION** — Engineering-grade white polycarbonate housing resists impact, scratches and corrosion. UL94V-0 flame rating.

Space-saving housing provides extra room for wire routing in ballast channel. Polarized quick-connect pilot light/test switch assembly simplifies installation.

Dual-voltage input capability (120V or 277V).

Patent pending integrated test switch pilot light that requires only one-hole drilling.

**U.S. Patent No. 6,522,147; 5,814,971; 6,577,136.**

**PERFORMANCE** — Compatible with electronic, rapid start, instant start, slimline, preheat or trigger start ballasts in standard or energy-saving configurations for 90 minutes emergency operation. See compatibility chart on page 2.

Unit wires two ways: on night light circuit (permanently energized) or on switchable circuit (unswitched circuit to battery charger and switched circuit to the fixture ballast). Unit will strike normally off lamp.

**BATTERY** — Sealed, maintenance-free, high-temperature nickel-cadmium battery. Ensures long life over wide temperature ranges. Automatic battery recharge after 90-minute discharge.

Pilot light and test switch provide visual and manual means of monitoring system operation.

**ELECTRICAL** — Constant current-type charger. Capacitive input circuit provides high efficiency and reliable operation.

High-efficiency push-pull inverter is the most effective method of converting DC power to AC power. It provides maximum light output, battery life and reliability.

**INSTALLATION** — Mounts concealed within fixture wireway for clean appearance and protection against vandalism. Two ½" holes in fixture channel permit mounting of test switch/pilot light behind fixture lens. Compact size (9.5" L x 2.5" W x 1.5" H) allows installation in a variety of fluorescent troffers, industrials, commercials and strips.

Unit mounting centers are identical to a standard ballast.

**LISTINGS** — UL listed. Damp location listed. Meets UL 924, NFPA 101 (current Life Safety Code), NEC and OSHA illumination standards.

UL approved for installation in sealed and gasketed fixtures. UL approved for installation in wet and damp location listed fixtures, 0-50°C (32-122°F). (Note: DW option does not make the battery pack suitable for mounting outside the fixture in a wet location application.)

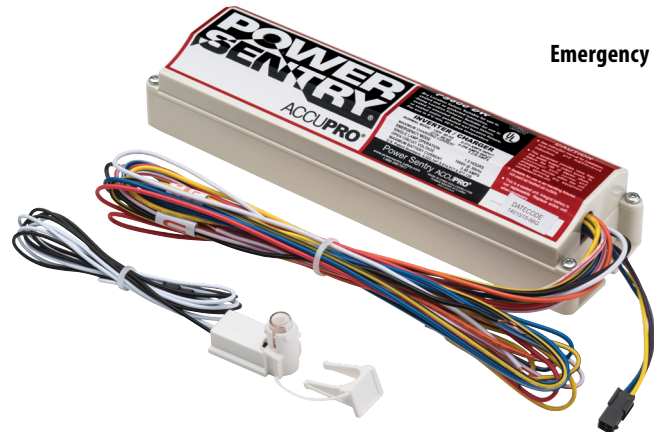
**WARRANTY** — 5-year limited warranty. Complete warranty terms located at: [www.acuitybrands.com/CustomerResources/Terms\\_and\\_conditions.aspx](http://www.acuitybrands.com/CustomerResources/Terms_and_conditions.aspx)

**Note:** Actual performance may differ as a result of end-user environment and application. Specifications subject to change without notice.

Fluorescent Emergency Ballast

# PS600 DW

Emergency Ballast



### ORDERING INFORMATION

All configurations of this product are considered "standard" and have short lead times

**Example:** PS600 DW SD

PS600 DW		Options	
<b>Series</b>		<b>SD</b>	Self-diagnostics <sup>2</sup>
<b>PS600 DW<sup>1</sup></b>	Damp/wet location emergency fluorescent battery pack		

Accessories: Order as separate catalog number.	
PSSD2	Field-installable self-diagnostic module <sup>2</sup>
ELA TSPLP	Remote or replacement test switch pilot light; mounts up to 25' away from fixture <sup>2</sup>
ELA TSPLPSD	Remote or replacement test switch pilot light for self-diagnostics; Mounts up to 25' away from fixture <sup>3</sup>
ELA PSMKSD	External mounting kit for self-diagnostics module <sup>4</sup>

#### Notes

- DW option does not make the battery pack suitable for mounting outside the fixture in a wet location application.
- Self-diagnostics (PSSD2) module ships separately. See [PSSD2](#) spec sheet for more details.
- See [ELA-RTS-TSPLP-PSTS-PSPRSB](#) spec sheet for more details.
- See [ELA-PSMK-PSMKSDPSDMT-PSRME](#) spec sheet for more details.

# PS600 DW Fluorescent Emergency Ballast

## SPECIFICATIONS

BATTERY				
Sealed Nickel-Cadmium				
Voltage	Typical Shelf life <sup>1</sup>	Typical life <sup>1</sup>	Maintenance <sup>2</sup>	Temperature range <sup>3</sup>
10.8	3 years	7-9 years	none	0-50°C (32-122°F)

### Notes

- At 77°F.
- All life safety equipment, including emergency lighting for path of egress must be tested in accordance with all National Fire Protection Association (NFPA) and local codes. Failure to perform the required testing could jeopardize the safety of occupants and will void all warranties.
- Ambient temperature range where unit will provide capacity for 90 minutes. Higher and lower temperatures affect life and capacity. Consult factory for detailed information.

## ELECTRICAL

Volts	Maximum AC input	
	Amps	Watts
120	.27	2.2
277	.26	2.2

## LAMP COMPATIBILITY

Lamp Typ	Wattage	PS600 DW
Lumens		600-700
U-Lamp T8	32	1
24"-48" T8	17-32	1,2
48"-60" T8	32-40	1,2
Long Compact (4-Pin)	18-40	1

### Notes

\* Based on the lumen output of the lamp; provides full light output.

- One-lamp emergency operation for 1, 2, 3 or 4-lamp ballasts.
- Two-Lamp emergency operation for 2, 2 or 4-lamp ballasts.
- One-lamp, 2 hour emergency operation for 2, 3 or 4-lamp ballasts.

## INITIAL LUMEN OUTPUT TABLE

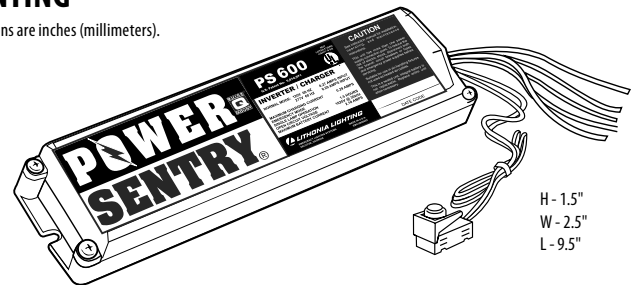
Type	Description	1 Lamp (lm)	2 Lamps (lm)
T8	F17T8	500	800
	F32T8	500	750
	FB31T8	550	650

## RECOMMENDED SPACING

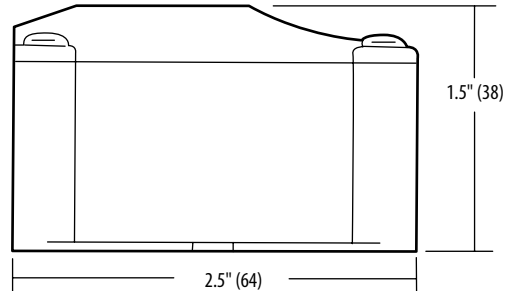
	Application	T8 Lensed Troffer	T8 Parabolic
2x4	Open Office	32'	34'
	Corridor	40'	53'
2x2	Open Office	32'	29'
	Corridor	39'	35'

## MOUNTING

All dimensions are inches (millimeters).



H - 1.5"  
W - 2.5"  
L - 9.5"

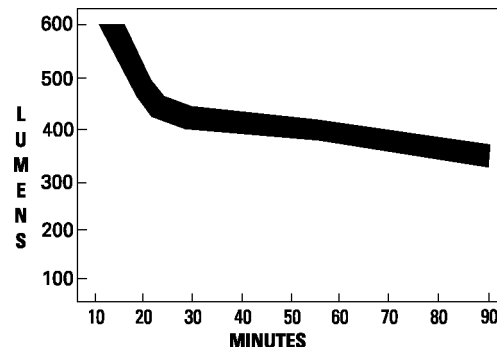


### Cross section end view

Length: 9.5" (241)  
Shipping weight: 1.8 lbs. (0. 8 kgs.)

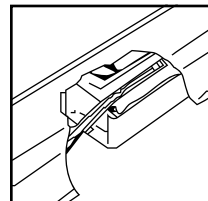
## PERFORMANCE

### Emergency Lamp Lumen Output

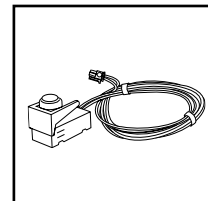


Light output data based on two F40 CW lamps (3050 lamp lumen rating). Two-lamp energy-saving rapid start ballast. Thermal and ballast factor corrections have been included. Light output for other lamp and ballast types will vary. Luminaire efficiency and application conditions must be determined to calculate actual illuminance levels. Consult Lithonia Lighting representative for further information.

## KEY FEATURES

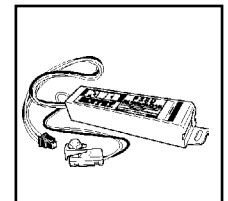


Unique space-saving housing.



Polarized quick-connect, integrated test switch/pilot light assembly.

## KEY OPTIONS



Self-diagnostic module.



PS600 DW