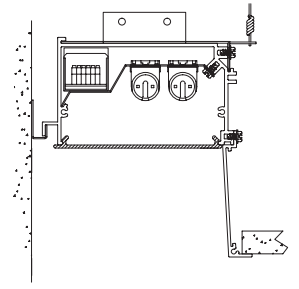
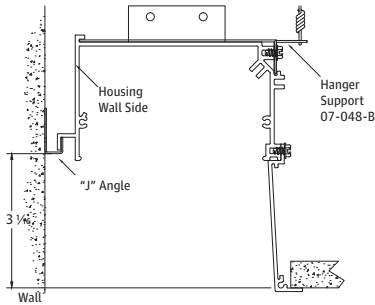


Installation Guide SP Recessed Flange

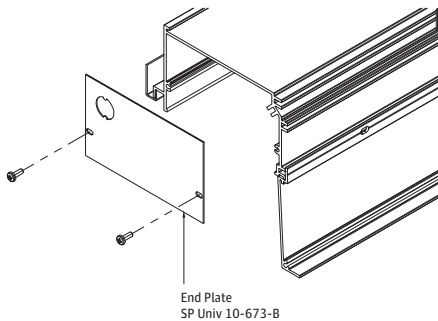


Hanging Fixture

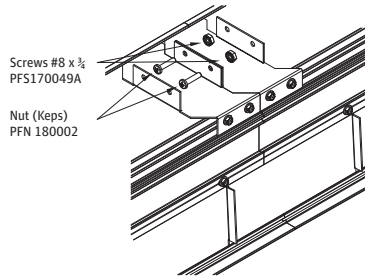
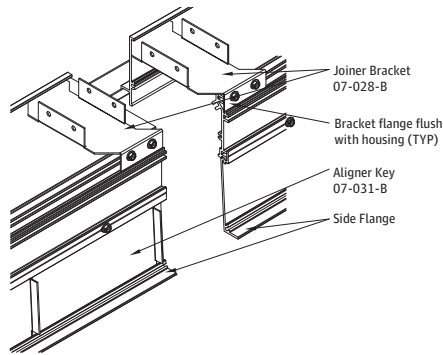
Note: Fixture must be installed prior to ceiling.



1. Attach "J" angle to wall at height indicated above finished ceiling line (hardware by others).
2. Attach end plate to left end of beginning-of-row fixture with two #6 x 3/4 screws provided. Hook fixture on wall angle and slide against wall on left end of run.
3. Support room side of fixture from the bracket support using tie wire (hardware by others).



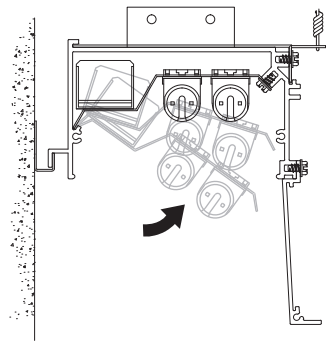
Joining Fixtures



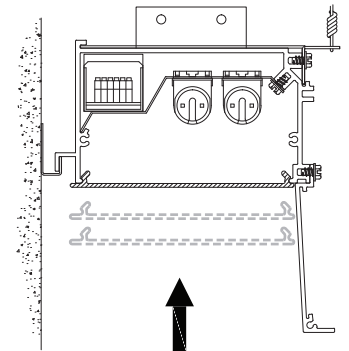
1. Flange on the joiner bracket must be flush with housing as shown. If flanges are not flush, loosen screws, align and retighten.
2. Secure both joiner brackets together with two screws and two nuts provided.
3. Slide aligner key to align side shields with one another.
4. Continue in this fashion to complete balance of run, attaching end cap to right end of the last fixture.

Note: Additional holes on outside of joiner brackets can be used to support fixture if needed.
For odd length runs, contractor to trim last fixture with cut-off saw prior to installing end cap.

Installing Wiring Trays and Lens

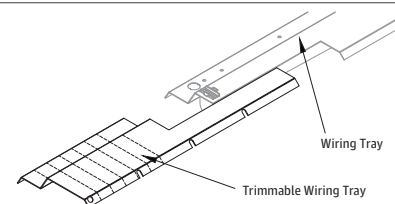


1. Hook side of wiring tray without obrounds into groove on the wall side of housing.
2. Rotate wiring tray up and attach with hardware provided (PFS170051).



1. Snap lens into place making sure that the longer tab of the lens is facing toward the wall side.

BOR/EOR Trimmable Tray



Trimmable wiring trays provided for end of run and corner conditions. Contractor to cut as required. Wiring channel must be closed to comply with U.L. and N.E.C. standards.