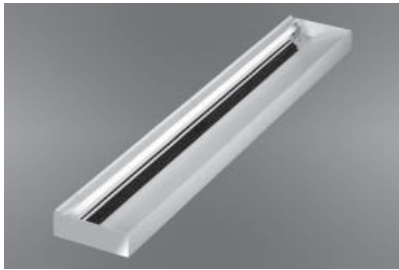


MARK® ARCHITECTURAL LIGHTING



The CVG2 Series

With its extremely shallow profile (2 inches deep), CVG2 is a perfect fit for most cove projects. Its forward-throw optics provide maximum ceiling illumination, while its white deflector reduces socket shadowing to a minimum.

CVG2 is available in T8, T5 or T5HO lamp configurations and in lengths from 2 to 8 feet.

Type:

Project:

Catalog Number:

DO NOT TYPE HERE. Autopopulated field.

Specification Features

Housing

Fabricated from 20-gauge, cold-rolled steel. Ballast compartments provided with 7/8"-diameter KOs at either end of housing for through wiring.

Finish

Matte white.

Reflector

Die-formed specular aluminum/matte white combination.

Deflector

20-gauge steel; matte white; tapered ends to reduce socket shadowing.

Lamps

(1) T5, T5HO or T8 lamp. Consult factory for other lamps.

Ballast

Thermally protected Class P energy-saving electronic ballast.

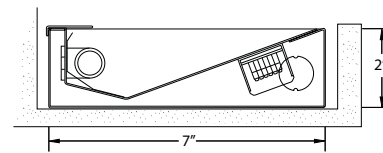
Mounting

Recessed indirect cove in 8', 6', 4', 3' and 2' sections. When required, housings are sized downward to accommodate T5 and T5HO lamps. (See chart.)

Certification

UL Listed, IBEW (Local 3) Union-made in the USA.

Technical Drawings



Ordering

Example: CG2 6 1T5HO EBPR 120

Series	Length ¹	No. of lamps/Lamp type ²	Ballast	Voltage	Options
CG2 CVG2	2 Nominal 2'	Number of lamps Lamp type ²	EBPR Program rapid start (standard)	120	EMPK Emergency battery pack
	3 Nominal 3'	1 T5	EBIS Instant start	277	
	4 Nominal 4'	T5HO	EDB Dimming (specify)	347 ³	
	6 Nominal 6'	T8	EDHL Lutron Hi-Lume® dimming		
	8 Nominal 8'		EDE10 Lutron Eco-10® dimming		
			EDES Lutron Eco System®		

Notes

- See housing-length/lamp chart.
- Consult factory for other lamps.
- Consult factory for lamp and ballast compatibility.

HOUSING LENGTHS BY LAMP TYPE

NOMINAL LENGTH	ACTUAL LENGTH (T8)	ACTUAL LENGTH (T5/T5HO)
2'	24"	22 1/2"
3'	36"	34 5/16"
4'	48"	46 1/8"
6'	72"	68 5/8"
8'	96"	92 1/4"