

MARK[®] ARCHITECTURAL LIGHTING



The CVG Series

CVG has a very shallow profile (2 1/4 inches deep) that makes it a great fit for most cove installations. Its forward-throw optics provide maximum ceiling illumination, and the lamp shield redirects light away from wall surfaces.

CVG is available in biax, T8, T5 or T5HO lamp configurations and in lengths from 2 to 8 feet.

Type:

Project:

Catalog Number:

DO NOT TYPE HERE. Autopopulated field.

Specification Features

Housing

Fabricated from 20-gauge, cold-rolled steel. Ballast compartments provided with 7/8"-diameter KOs at either end of housing for through wiring.

Finish

Matte white.

Reflector

Precision-formed steel sides; 20-gauge steel lamp shield to redirect light away from wall surfaces; white.

Lamps

(1) 40W or 50W BX, or (1) T8, or (1 or 2) T5 or T5HO. Consult factory for other lamps.

Ballast

Thermally protected Class P energy-saving electronic ballast.

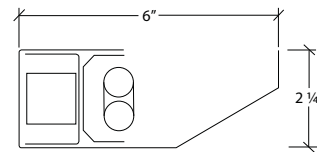
Mounting

Recessed, indirect cove in 8', 6', 4', 3' and 2' sections. When required, housings are sized downward to accommodate T5 and T5HO lamps. (See chart.)

Certification

UL Listed, IBEW (Local 3) Union-made in the USA.

Technical Drawings



Ordering

Example: CG 4 1T5HO EBPR 120

Series	Length ¹	No. of lamps/Lamp type ²	Ballast	Voltage	Options
CG CVG	2 Nominal 2'	Number of lamps	EBPR Program rapid start (standard)	120	EMPK Emergency battery pack
	3 Nominal 3'	1	EBIS Instant start	277	
	4 Nominal 4'	2 ³	EDB Dimming (specify)	347 ⁴	
	6 Nominal 6'		EDHL Lutron Hi-Lume [®] dimming		
	8 Nominal 8'		EDE10 Lutron Eco-10 [®] dimming		
			EDES Lutron Eco System [®]		

Notes

- See housing-length/lamp chart.
- Consult factory for other lamps.
- Two-lamp option available only for T5 and T5HO.
- Consult factory for lamp and ballast compatibility.

HOUSING LENGTHS BY LAMP TYPE

NOMINAL LENGTH	ACTUAL LENGTH (T8 or BX)	ACTUAL LENGTH (T5/T5HO)
2'	24"	22 1/2"
3'	36"	34 5/16"
4'	48"	46 1/8"
6'	72"	68 1/2"
8'	96"	92 1/8"