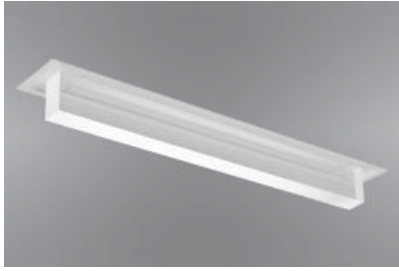


MARK[®] ARCHITECTURAL LIGHTING



The **Fin** Series

Fin is a decorative accent fixture with a clean, geometric form that complements any environment. Versatile and ornamental, it is perfect for making an aesthetic statement, creating intriguing patterns of light or enhancing other design elements.

Fin can be mounted horizontally or vertically and is available in a choice of clear sides with frosted edges or frosted sides with frosted edges. Lengths range from 2 to 8 feet, and the depth below the fixture door can be 2, 3 or 4 inches.

Type:

Project:

Catalog Number:

DO NOT TYPE HERE. Autopopulated field.

Specification Features

Housing

Housing and internal components fabricated from 20-gauge, cold-rolled steel.

Finish

Matte white.

Reflector

Precision-formed steel; white.

Shielding

Nominal 1 1/2"-thick acrylic fin.

Lamps

(1) T5 or T5HO lamp. Lamps provided by others.

Ballast

Thermally protected Class P energy-saving electronic ballast.

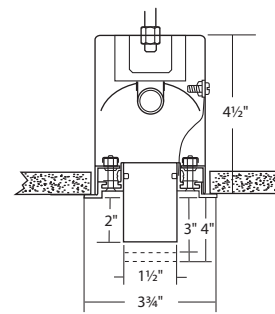
Mounting

Recessed in sheetrock ceiling; rod-mounted to structure. Consult factory for other ceiling types.

Certification

cULus Listed, IBEW (Local 3) Union-made in the USA.

Technical Drawings



Ordering

Example: FIN 2 2 1T5HO EBPR 120 CF

Series	Length	Fin Depth Below Face of Door	No. of lamps/Lamp type ¹	Ballast	Voltage	Finish	Options	
FIN Fin	2 2'	2 2"	Number of lamps 1	Lamp type ¹ T5 T5HO T5S ² T5HOS ²	EBPR Program rapid start (standard) EBIS Instant start EDB Dimming (specify) EDHL Lutron Hi-Lume [®] dimming EDE10 Lutron Eco-10 [®] dimming EDES Lutron Eco System [®]	120 277 347 ³	CF Clear sides, frosted edges FF Frosted sides, frosted edges	EMPK Emergency battery pack
	3 3'	3 3"						
	4 4'	4 4"						
	5 5'							
	6 6'							
	8 8'							

Notes

- Consult factory for other lamps and for LED options.
- S = Staggered lamping.
- Consult factory for lamp and ballast compatibility.