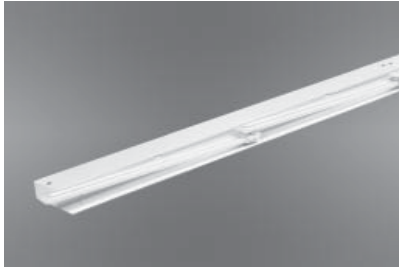


# MARK<sup>®</sup> ARCHITECTURAL LIGHTING



## The Ramp Series

Ramp is designed to reduce socket shadows in cove projects. It accomplishes this by overlapping compact fluorescent lamps—either 40W or 50W biax.

Ramp is available in nominal 2-foot and 4-foot lengths, and units can be continuously row mounted.

Type:

Project:

Catalog Number:

DO NOT TYPE HERE. Autopopulated field.

## Specification Features

### Housing

20-gauge, cold-rolled steel.

### Finish

Matte white.

### Reflector

Precision-formed steel; white.

### Lamps

(1) 40W or 50W BX lamp. Lamps provided by others.

### Ballast

Thermally protected Class P energy-saving electronic ballast.

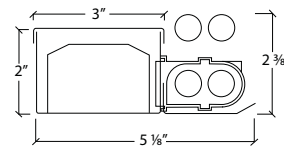
### Mounting

Surface mount; can be continuously rowed.

### Certification

UL Listed, IBEW (Local 3) Union-made in the USA.

## Technical Drawings



## Ordering

Example: RMP 4 140BX EBPR 120

Series	Length	No. of lamps/Lamp type	Ballast	Voltage	Options
RMP Ramp	2 Nominal 2' (20 3/4") 4 Nominal 4' (41 1/2")	Number of lamps 1 Lamp type 40BX 50BX	EBPR Program rapid start (standard) EBIS Instant start EDB Dimming (specify) EDHL Lutron Hi-Lume <sup>®</sup> dimming EDE10 Lutron Eco-10 <sup>®</sup> dimming EDES Lutron Eco System <sup>®</sup>	120 277 347 <sup>1</sup>	EMPK Emergency battery pack

### Notes

1 Consult factory for lamp and ballast compatibility.