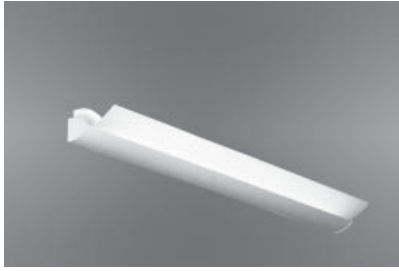


MARK® ARCHITECTURAL LIGHTING



The Wingspan Wall Series

With its sleek, contemporary design, Wingspan Wall is a stylish choice for high-end corporate interiors. Whether you choose perforated steel wings or extruded acrylic ones, Wingspan soars above the routine.

Wingspan Wall is available in 4- and 8-foot sections that utilize one T5 or T5HO lamp. It is the perfect complement to the Wingspan pendant luminaire.

Type:

Project:

Catalog Number:

DO NOT TYPE HERE. Autopopulated field.

Specification Features

Housing

Extruded aluminum with fluted or smooth spin.

End Plates

Flat steel endplate or flat steel endplate with white acrylic halo.

Finish

Matte white.

Reflector

Die-formed, prepainted-white steel and semi-specular aluminum.

Shielding

Perforated steel wings or soft-white acrylic wings.

Lamps

(1) T5 or T5HO. Lamps provided by others.

Ballast

Thermally protected Class P energy-saving electronic ballast.

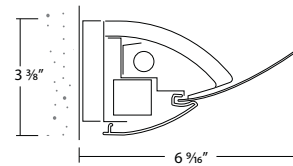
Mounting

Wall mounted. Units can be continuously rowed.

Certification

UL Listed, IBEW (Local 3) Union-made in the USA.

Technical Drawings



Ordering

Example: WSWF 4 1T5 EBPR 120 PF IND

Series	Length	No. of lamps/Lamp type	Ballast	Voltage	Shielding	Designation	Options
WSSW Wingspan Wall - halo ends, smooth spine	4 Nominal 4'	Number of lamps 1 Lamp type T5	EBPR Program rapid start (standard)	120	SW Soft-white acrylic	IND Individual	EMPK Emergency battery pack
WSFSW Wingspan Wall - full ends, smooth spine	8 Nominal 8'	T5HO	EBIS Instant start	277	PF Perforated steel	BOR Beginning of row	
WSFW Wingspan Wall - halo ends, fluted spine			EDB Dimming (specify)	347¹		INT Intermediate	
WSFFW Wingspan Wall - full ends, fluted spine			EDHL Lutron Hi-Lume® dimming			EOR End of row	
			EDE10 Lutron Eco-10® dimming				
			EDES Lutron Eco System®				

Notes

1 Consult factory for lamp and ballast compatibility.