

GT8

Static

Intended Use

Low-profile, static T8 luminaire provides general illumination for recessed applications. Ideal for restricted plenums.

Features

Innovative low-profile design optimized around T8 lamps and low-profile electronic ballasts.

Hemmed sides offer smooth, easy handling during installation.

Standard steel door frame features precise flush mitered corners. Unique design delivers a premium extruded appearance.

Housing and door frame interface provides a superior mechanical light seal without the use of foam gasketing.

Spring action latches are optional. Specify SAL. Door latches and hinges from either side.

Improved performance – higher fixture efficiency.

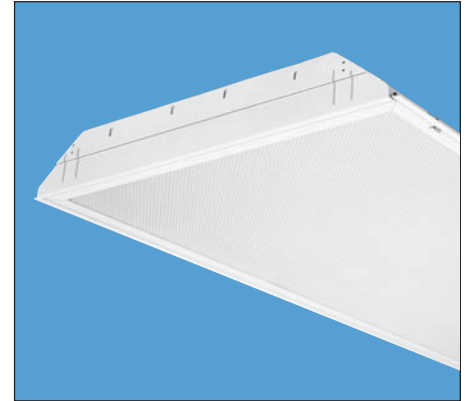
Integral T-bar safety clips are standard – no need to install separate clips.

Flush or regressed aluminum door frames available.

Compatible with most ceiling types. Field trim modification kits also available. See page 94.

U.S. patents – 6,210,025; 6,231,213; 6,213,625; 2,288,471.

Listings – UL Listed (standard). CSA Certified or NOM Certified (see Options).



Ordering Information

Example: **2GT8 2 32 A12 120 GEB**

Series 2GT8 2' wide	Number of lamps 2, 3, 4 ¹ Not included.	Frame type (blank) Flush steel, white FN Flush aluminum, natural FM Flush aluminum, matte black FW Flush aluminum, white RN Regressed aluminum, natural RM Regressed aluminum, matte black RW Regressed aluminum, white	Voltage 120 277 347 MVOLT* Others available. * 120-277V. Must specify GEB10IS.	Options 1/3 One 3-lamp ballast 1/4 One 4-lamp ballast GEB Electronic ballast, ≤20% THD GEB10IS T8 electronic ballast, ≤10% THD, instant start GEB10RS T8 electronic ballast, ≤10% THD, rapid start CSA CSA Certified NOM NOM Certified See pages 90 & 91 for others.
Trim type (blank) Grid F Flanged	Lamp type 17 17W T8 (24") U31 31W T8 U (1 ⁵ / ₈ " leg) U316 31W T8 U (6" leg) ² 32 32W T8 (48") CF39 39W TT5 (16") CF40 40W TT5 (24") ² CF50 50W TT5 (24") CF55 55W TT5 (24")	Diffuser type A12 #12 pattern acrylic A12125 #12 pattern acrylic, .125" thick A19 #19 pattern acrylic, .156" thick A15 #15 pattern acrylic, .200" thick K20 #20 pattern acrylic, .140" thick 84Y Holophane 8224 with overlay PC1S ½"x½"x½" plastic cube louver, silver PC2S 1½"x1½"x1" plastic cube louver, silver with flange ³ PC3S ¾"x¾"x½" plastic cube louver, silver		

Availability and Dimensions

Nominal size	Series	Number of lamps	Lamp type	Height in.(cm)
2x2	2GT8	2	17, U31, U316, CF40	3 ³ / ₁₆ (8.0)
		3	17, U31	3 ³ / ₁₆ (8.0)
		4	17	3 ³ / ₁₆ (8.0)
2x4	2GT8	2, 3, 4	32	3 ³ / ₁₆ (8.0)

NOTES:

- 1 4-lamp models available with 17W or 32W straight tube lamps only.
- 2 Not available on 3-lamp fixtures. Use U31.
- 3 Available with flush door frames only. Some 2x2 lamp and electrical combinations not available with PC2 louvers. Consult factory.

