

SP

Air-Handling

Intended Use

Complete selection of specification premium air-handling luminaires recommended for all general illumination recessed applications.

Features

Fully gasketed door frame with spring-action latches.

Full black reveal has floating door appearance.

Aluminum door frames available; flush or regressed. Air-flow control available with optional heat removal dampers and air pattern control blades.

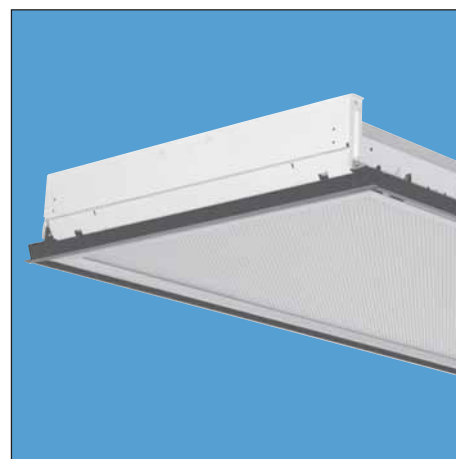
Integral T-bar safety clips are standard on 1'x4', 2'x2' and 2'x4' fixtures. No need to install separate clips.

Compatible with virtually all ceiling types. See page 107. Field trim modification kits also available.

Some fixtures available in metric sizes. Contact Lithonia Lighting sales representative.

Listings

Listings – UL Listed (standard), CSA Certified or NOM Certified (see Options).



Ordering Information

Example: **2SP G A 3 32 A12 MVOLT 1/3 GEB10IS**

Series	Air function	Lamp type	Frame type	Voltage	Options
SP 1' wide 2SP 2' wide 4SP 4' wide ¹	B No air function, with reveal A Air supply/return H Heat removal D Dual function supply/return/heat removal	17 17W T8 (24") U31 31W T8 U (1 1/8" leg) U316 31W T8 U (6" leg) ⁴ 32 32W T8 (48") CF40 40W TTS (24")	(blank) Flush steel, white FN Flush aluminum, natural FM Flush aluminum, matte black FW Flush aluminum, white RN Regressed aluminum, natural RM Regressed aluminum, matte black RW Regressed aluminum, white	MVOLT 120 277 347 Others available.	1/3 One 3-lamp ballast 1/4 One 4-lamp ballast GEB Electronic ballast, ≤20% THD GEB10IS T8 electronic ballast, ≤10% THD, instant start GEB10RS T8 electronic ballast, ≤10% THD, rapid start CSA CSA Certified NOM NOM Certified See pages 106, 109 for others.
Trim type	Number of lamps	Diffuser type ⁵			
G Grid F Flanged MT Modular fit-in ST Screw slot ^{1,2}	1 ³ 2 3 4 6 8 Not included.	A12 #12 pattern acrylic A12125 #12 pattern acrylic, .125" thick A19 #19 pattern acrylic, .156" thick K20 #20 pattern acrylic, .140" thick 84Y Holophane 8224 with overlay			

Availability and Dimensions				
Nominal size	Series	Number of lamps	Lamp type	Height ⁷ in. (cm)
1'x4'	SP AIR	1, 2, 3	32	7 1/4 (18.4)
2'x2'	2SP AIR	2	17, U31, U316, CF40	4 1/2 (11.4)
		3	17, U31, CF40	4 1/2 (11.4)
		4	17, CF40	4 1/2 (11.4)
2'x4'	2SP AIR	2, 3, 4	32	4 1/2 (11.4)
4'x4'	4SP AIR ^{4,6}	4, 6, 8	32	5 (12.7)

- NOTES:
- 1 Not available with flush steel door.
 - 2 Consult factory for fixture depth.
 - 3 1-lamp model available in 1'x4' only.
 - 4 Not available on 3-lamp fixtures. Use U31.
 - 5 Center mullion standard on 4SP AIR. 4'x4' lens optional.
 - 6 Integral T-bar clips not available. Use LATIC option.
 - 7 Some options increase fixture depth. Consult Lithonia Lighting sales representative if plenum depth is a factor.

