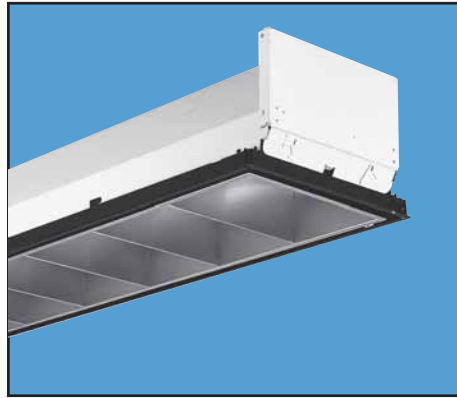


Parabolic Troffers, 3" Louvers

PM3

Paramax®



Intended Use

High performance parabolic luminaires for superior light control, visual comfort and light cut-off in open area indoor applications.

Features

Contoured housing for superior light control.

Design optimized for use with T8 lamps and electronic ballasts.

Hemmed sides and ends provide smooth edges for easy handling during installation.

Integral T-bar safety clips standard on most models.

Premium-grade aluminum louvers in choice of finishes, shipped in thermally sealed polyethylene wrapper.

Mitered corners and interlocking construction assure precise parabolic shape.

Choice of cell configuration and lampping.

Compatible with virtually all ceiling types and air functions. For complete descriptions, see pages 107, 111.

Surface-mounted versions also available. See page 53.

Metric sizes also available. Consult Lithonia Lighting sales representative.

Listings

UL Listed (standard). CSA Certified or NOM Certified (see Options).

Ordering Information

Example: **PM3 G B 2 32 8LD MVOLT GEB10IS**

Series	Air function	Lamp type	Number of cells	Louver finish	Voltage	Options
PM3 1' wide	B No air function	17 17W T8 (24")	3	LD Low iridescent anodized diffuse silver	MVOLT	1/3 One 3-lamp ballast
20PM3 20" wide	A Air supply/return	U31 31W T8 U (1 1/8" leg)	4		120	1/4 One 4-lamp ballast
4PM3 4' wide	H Heat removal	U316 31W T8 U (6" leg)	6	LS Low iridescent anodized specular silver	277	GEB Electronic ballast, ≤20% THD
	D Dual function supply/return/heat removal	32 32W T8 (48")	8		347	GEB10IS T8 electronic ballast, ≤10% THD, instant start
		CF40 40W TT5 (24")	9		Others available.	GEB10RS T8 electronic ballast, ≤10% THD, rapid start
			12			CSA CSA Certified
			16			NOM NOM Certified
			18			See page 109 for others.
			24			
			36			
			64			
Mounting	Number of lamps					
G Lay-in grid	1					
F Flanged	2					
MT Modular fit-in	3					
	4					
	6					
	8					
	Not included.					

NOTES:

- 1 Popular cell configurations are shown in **bold** type.
- 2 Some options increase fixture depth. Consult Lithonia Lighting sales representative if plenum depth is a factor.

Availability and Dimensions					
Nominal size	Series	Number of lamps	Lamp type	Number of cells ¹ (rows x number in row)	Height ² in. (cm)
1'x2'	PM3	1, 2	17, U31, CF40	3(1x3), 4(1x4) , 6(2x3), 8(2x4)	7 1/4 (18.4)
		1	U316	3(1x3), 4(1x4) , 6(2x3), 8(2x4)	7 1/4 (18.4)
1'x4'	PM3	1, 2, 3	32	6(1x6), 8(1x8) , 9(1x9)	7 1/4 (18.4)
		2	32	12(2x6), 16(2x8)	7 1/4 (18.4)
20"x4'	20PM3	2	32	12(2x6) , 16(2x8), 18(3x6), 24(3x8)	5 15/16 (15.1)
		3	32	18(3x6) , 24(3x8)	5 15/16 (15.1)
4'x4'	4PM3	4	32	12(2x6) , 16(2x8), 18(3x6), 24(3x8)	5 15/16 (15.1)
		6	32	36(6x6) , 64(8x8)	6 1/2 (16.5)
		8	32	36(6x6) , 64(8x8)	6 1/2 (16.5)