

6" IC/Non-IC Housing

L7XF RECF

IC/Non-IC Rated Full Trims – All trims are damp location listed. Lensed trims are listed for wet locations. Lamp types and maximum wattages are listed for each trim. White flange standard.



Intended Use

Recessed housing rated IC or Non-IC for new construction applications. Approved for direct burial in insulation (IC) and through-branch wiring. Approved for most wiring and ceiling types.

Features

Steel frame with aluminum can for superior thermal performance for a wider range of trims.

Factory-installed, captive bar hangers span 24" and features built-in nailers and T-bar clips.

J-box has poke-home connectors and built-in Romex clamps. Socket clips to trim to ensure proper and consistent lamp position.

120V only electronic ballast standard (4-pin lamp) with end of life protection.

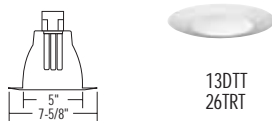
Class P thermally protected against improper contact with insulation.

Listings

UL Listed to U.S. and Canadian safety standards. Approved for FCC grade B residential use.

Premium open trim, wide flange

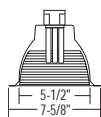
601 White



13DTT
26TRT

Premium deep baffle, narrow flange

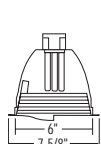
6B2 Black
6B2W White



18DTT
26TRT

Premium eyelid wallwash w/baffle

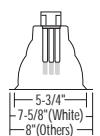
6W2 Black
6W2W White



18DTT
26TRT

Premium open trim, narrow flange

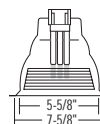
602 White
602SA Clear diffuse
602A Clear specular
602SG Gold diffuse
602G Gold specular



13DTT
26TRT

Premium baffle, narrow flange

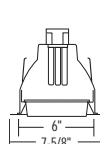
6B4 Black
6B4W White



18DTT
26TRT

Premium glass lens

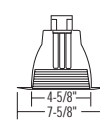
6LD3 Drop opal, white splay
6LDB3 Drop opal, black baffle
6LF3 Flush white, white splay
6LFB3 Flush white, black baffle
6L4 Fresnel, white splay
6LB4 Fresnel, black baffle



18DTT
26TRT

Premium baffle, wide flange

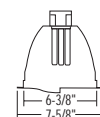
6B1 Black
6B1W White



18DTT
26TRT

Premium eyelid wallwash

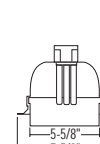
6W1 White



18DTT
26TRT

Premium polycarbonate lens

6LD1 Drop opal¹
6LD2 Drop prismatic¹
6LF1 Flush opal¹
6LF2 Flush prismatic¹

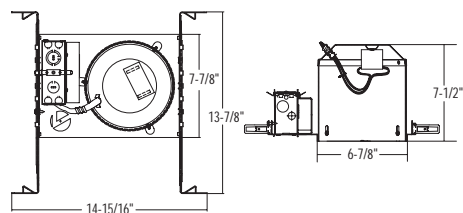


18DTT
26TRT

Ordering Information

Example: **L7XF 26TRT 120 RECF**

Series	Wattage/lamps	Voltage
L7XF	13DTT/TRT 18DTT/TRT 26TRT	120 RECF Residential-grade electronic ballast



NOTES:

1 For plastic flange, add suffix PF to catalog number (Example: 6LD3PF).

IMPORTANT: For packaging information, see page 322. See specification sheets for complete trim selection.

Drawings are for dimensional detail only and may not represent actual mechanical configuration. Dimensions are shown in inches.