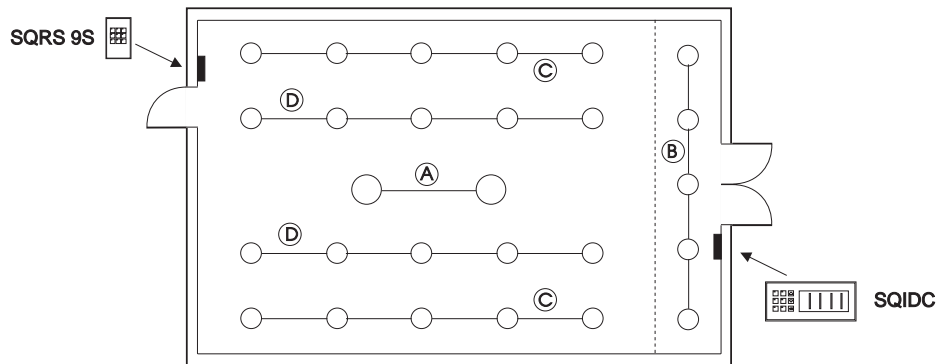


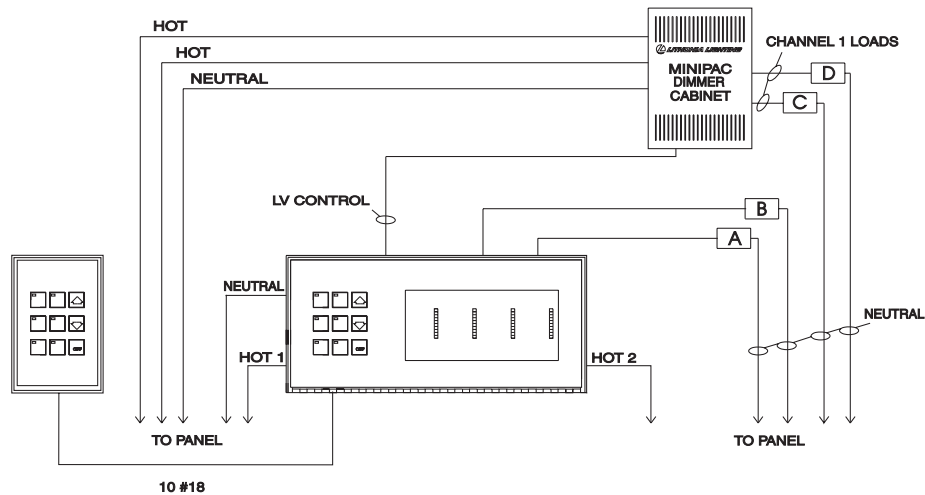
TYPICAL DIMMING APPLICATION

SEQUEL IDC / MINIPAC – Meeting Room

3



- A - Chandeliers, 600 watts total
- B - Soffit downlights, 750 watts total
- C - Wallwash, 1600 watts total
- D - Downlights, 1600 watts total



- Notes:
- Two loads are less than 800 watts each. Two additional loads are over 800 watts.
 - Use a Sequel IDC integrated dimmer control to directly dim the smaller loads.
 - Use a Sequel MiniPac cabinet with two dimmers to control the large loads.

When the connected load on the Sequel IDC is within the limitations of a single 20A circuit, the two hots can be connected to a single circuit. To use the full 2000-watt capacity, connect the Sequel IDC hots to separate circuits.

Use an SQRS to provide lighting control from the other end of the room. The SQRS 9S has nine buttons and duplicates the faceplate controls of the SQIDC.

