

**READ AND FOLLOW ALL SAFETY INSTRUCTIONS! SAVE THESE INSTRUCTIONS AND DELIVER TO OWNER AFTER INSTALLATION**

## IMPORTANT SAFETY INSTRUCTIONS

### ▲WARNING

To reduce the risk of death, injury or property damage from fire, electric shock, cuts, abrasions, falling parts, and other hazards:

- Service of the equipment must be performed by qualified service personnel.
- Installation and maintenance must be performed by a person familiar with the construction and operation of this product and any hazards involved. All applicable codes and ordinances must be followed.
- Read this document before installing, servicing, or maintaining this equipment. These instructions do not cover all installation, service, and maintenance situations. If your situation is not covered, or if you do not understand these instructions or additional information is required, contact *Synergy Lighting Controls*.

### ▲WARNING

Before installing, servicing, or maintaining this equipment, follow these general precautions.

#### To reduce the risk of electrocution:

- Make sure the equipment is properly grounded.
- Always de-energize any equipment before connecting to, disconnecting from, or servicing the equipment.

#### To reduce the risk of fire:

- Use supply conductors with a minimum installation temperature rating as specified.

#### To reduce the risk of personal injury from cuts, abrasions:

- Wear gloves to prevent cuts or abrasions from sharp edges when removing from carton, handling and maintaining this equipment.
- Do not install a damaged equipment.

*Synergy Lighting Controls*, a division of *Acuity Brands Inc.*, assumes no responsibility for claims arising out of improper or careless installation or handling of this product.

**SAVE THESE INSTRUCTIONS**

## Before You Start

1. Always disconnect all power.
2. This device is supplied by a Class 2 low voltage transformer in the dimmer cabinet. Install in accordance with appropriate codes.
3. Excessive dust may damage the control station. Install during final finish work.
4. Use only as intended.
5. Use only accessories recommended by Lithonia Control Systems.

### Back Box Selection Chart

Control Station Catalog Number	Required Backbox
SQCS 6P 4C SQCS 6P 8C	5 Gang Lithonia SQCS 5GB Raco #699 Steel City GW535C

## Important Control Station Mounting and Location Notes

1. Ambient Conditions:  
Maximum Ambient Temperature: 104°F/40° C  
Minimum Ambient Temperature: 32°F/0°C  
Relative Humidity: 10-90% Non condensing
2. Control station door hinges down. Leave 6" space below the backbox for door to open properly.
3. Recommended mounting height for optimum operating ease is 52" to the bottom of the switch box.

## Rough in Mounting Instructions For Wall Mounted Stations

Install the appropriate backbox at the required location. Consult factory for retrofit applications. See Backbox Selection Chart on left. Backbox should be slightly behind the face of the wall to finish off properly. See illustration below.

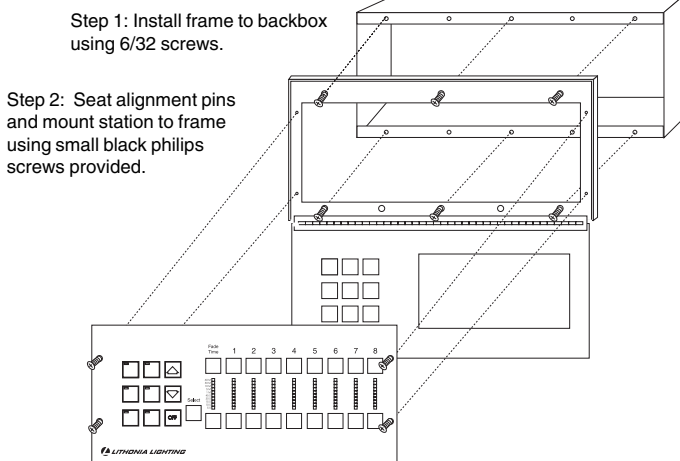
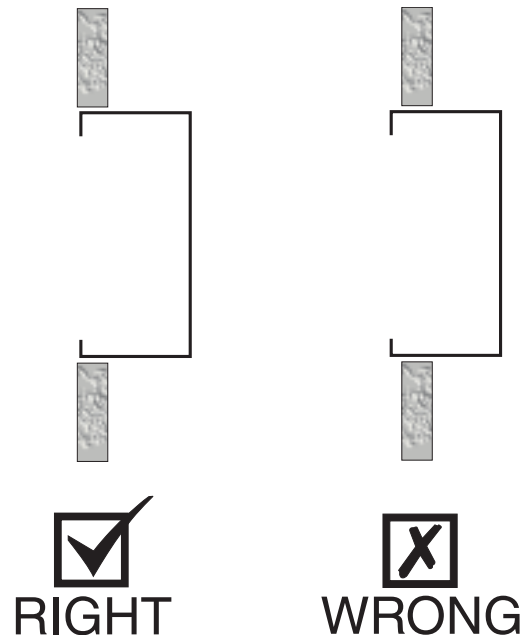


Figure 1 - Exploded View of Control Station



## Important Control Station Rough In Wiring

1. Station frame must be mounted to a grounded back box, or a separate ground conductor must be added.
2. Control station network must be wired in a daisy chain. Remote stations must home run to the control station. See figure 2.
3. See figure 3 for detailed interconnect wiring of control station network. Do not connect control station pigtail until you have verified proper voltages are present. See Start Up Guide included in the Operation and Maintenance Manual.
4. See SQRS remote station or accessory installation instructions for detailed interconnect wiring of remote stations or other accessories. See figure 4 for other functions that are available from remote input terminals.
5. See figure 5 for connection of momentary dry closures to the SQMPCS. See figure 4 for other functions that are available from remote input terminals.

## Important Control Station Rough In Wiring Con't

6. Refer to the Operation and Maintenance Manual or As Built drawings for the switch settings on the back of the SQCS.
7. Do not mix control wiring in power wiring conduits.
8. Refer to Sequel User Guide for operating information.

## One Line Wiring Symbols

**A#** Control Station Network Cable. Class 2 low voltage. All devices connecting to network must be wired in a daisy chain (in and out); "T" taps or branches in the network are not permitted. The numerical order in which devices are connected is not important. The network wire shall be two #18 AWG wires plus one #18 AWG/2 twisted and shielded pair, 300 volt insulation equal to Alpha #2241 (non plenum) or Belden 88760 (plenum rated). In lieu of above, the network wire may be two #18 AWG/2 twisted and common shielded pairs, equal to Belden #9552 (non plenum), or Alpha #58632 (plenum). Consult LCS for approval for alternate cables.

**C#** Quantity of Class 2 low voltage individual #18 AWG wires as indicated in the symbol. If multiconductor cable is desired, use Belden 83653, 83662 shielded, low capacitance, **(not twisted)** control cable or equal. A spare conductor is shown in each run below for applications with a total wire length of greater than 250 feet (80m).

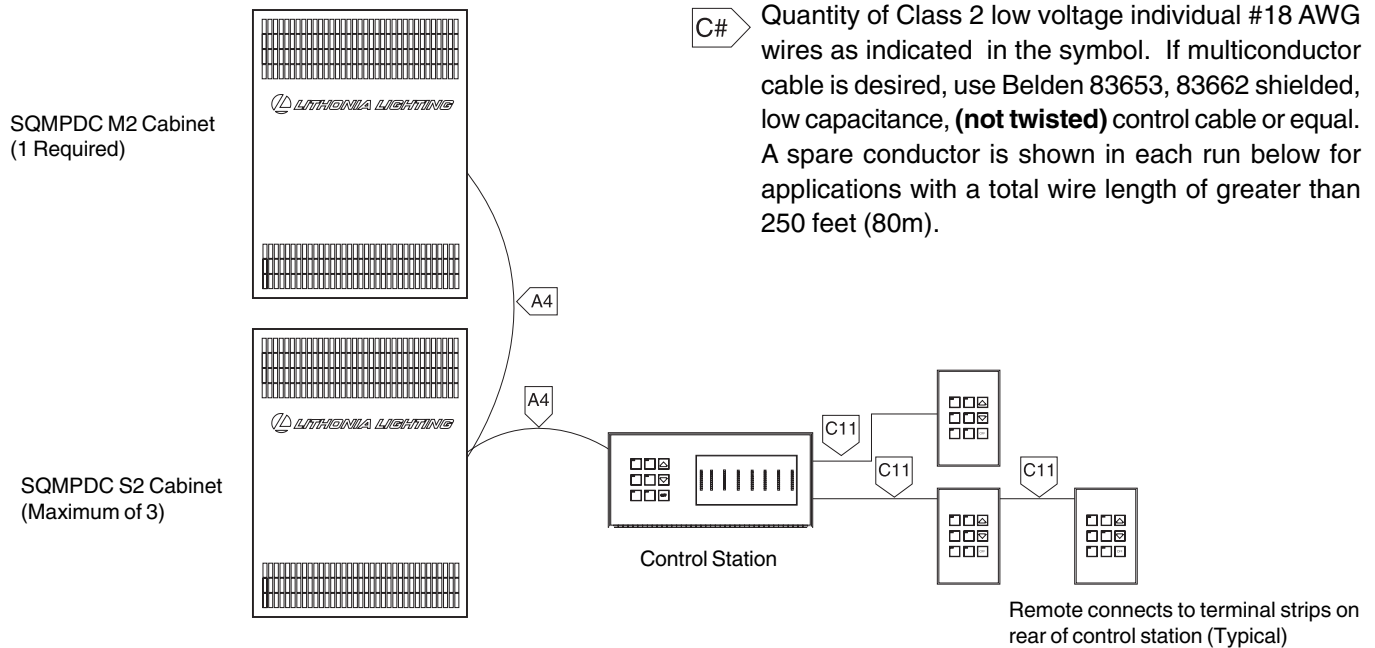
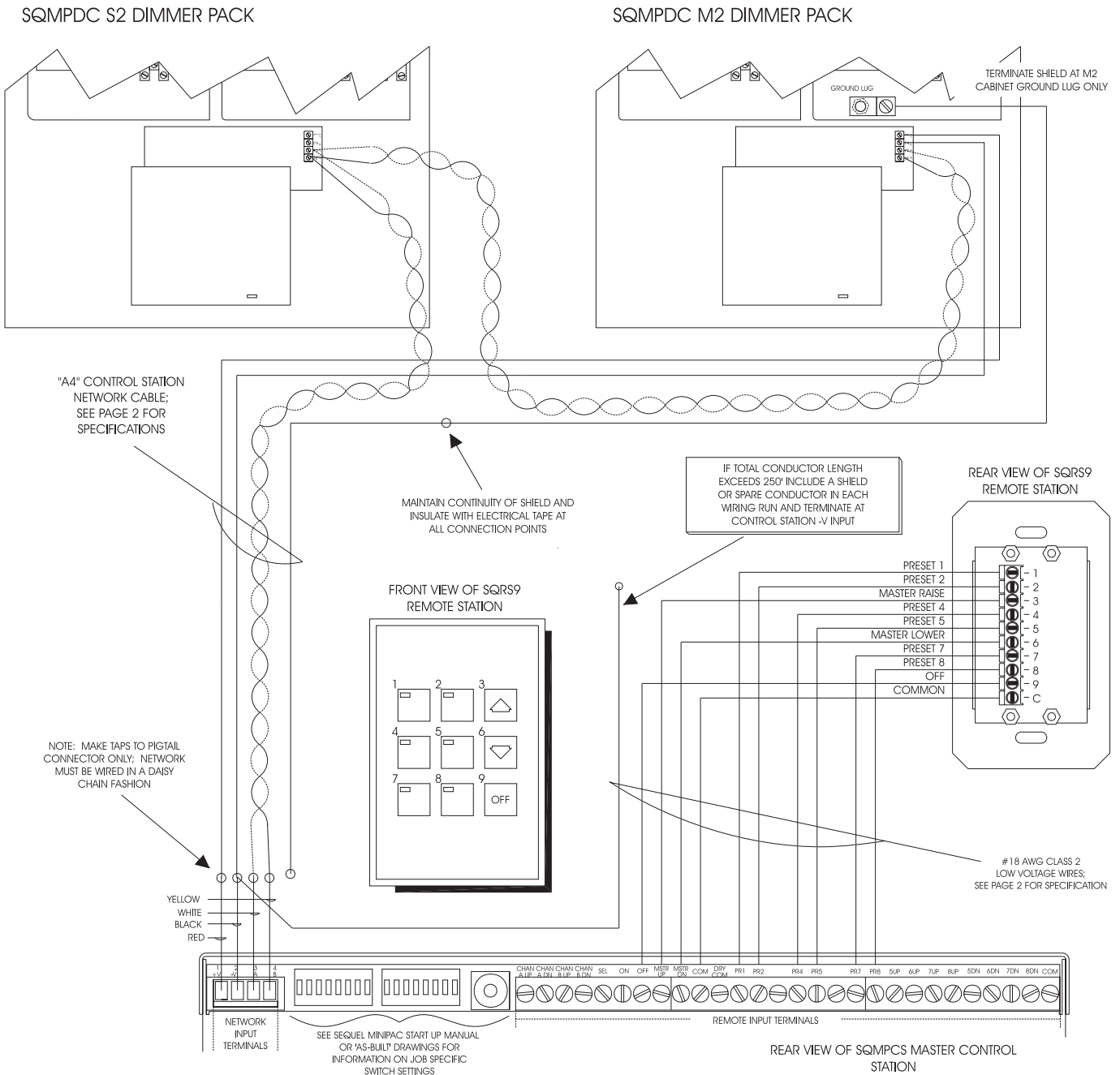


Figure 2 - Control Station One Line



**Figure 3 - Control Station Network and Typical Remote Station Wiring Details**

**IMPORTANT:** Control Station network miswires may cause damage and void warranty. Verify proper voltages are present before attaching pigtail connector to the back of the Control Station. See the Start Up section of the Sequel Operation and Maintenance manual for information.

Control Station Terminal Label	Function
CHAN A UP/CHAN A DN	4 C Station; First Channel Raise/Lower (8 C; Second Channel)
CHAN B UP/CHAN B DN	4 C Station; Second Channel Raise/Lower (8 C; Fourth Channel)
SEL	Select function used when programming.
ON	Recalls last light level
OFF	All off
MSTR UP/MSTR DN	All dimmed channels raise/lower
COM (COMMON)	Used only with SQRS remote station and SQRSO 8 output board
DRY COM (DRY COMMON)	Used with dry contact closures and accessory devices
PR1, PR2, PR4, PR5, PR7, PR8	Mimics presets available on front of station
N/C	No Connection
5 UP / 5 DN; 7 UP / 7 DN	8 C Station; Fifth & Seventh Channel Raise/Lower
6 UP / 6 DN	4 C Station; Third Channel Raise/Lower (8C; Sixth Channel)
8 UP / 8 DN	4 C Station; Fourth Channel Raise/Lower (8C; Eighth Channel)

Figure 4 - Remote Input Terminal Functions

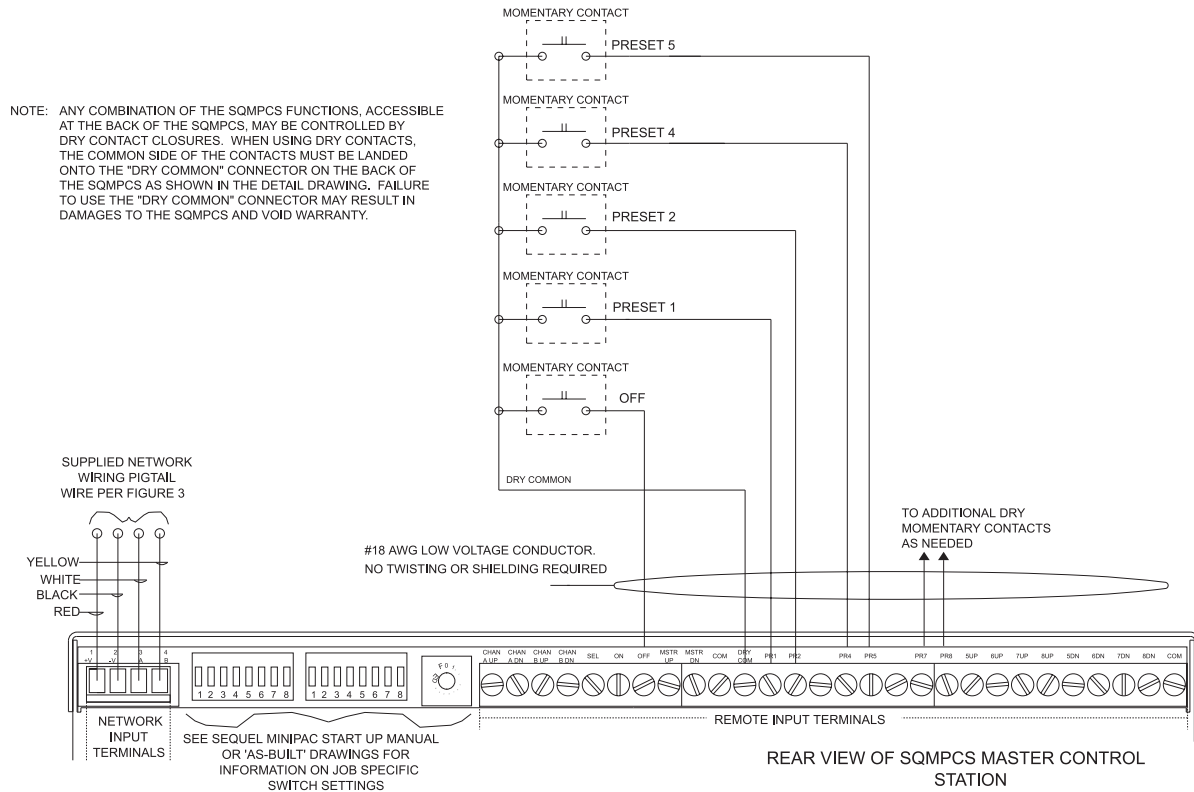


Figure 5 - Momentary Closure Wiring Detail