

Installation Instructions

SYPM Plate, SYA 2POLE, 3POLE, 4POLE

**READ AND FOLLOW ALL SAFETY INSTRUCTIONS!
SAVE THESE INSTRUCTIONS AND DELIVER TO OWNER AFTER INSTALLATION**

IMPORTANT SAFETY INSTRUCTIONS

⚠ WARNING

To reduce the risk of death, injury or property damage from fire, electric shock, cuts, abrasions, falling parts, and other hazards:

- Service of the equipment must be performed by qualified service personnel.
- Installation and maintenance must be performed by a person familiar with the construction and operation of this product and any hazards involved. All applicable codes and ordinances must be followed.
- Read this document before installing, servicing, or maintaining this equipment. These instructions do not cover all installation, service, and maintenance situations. If your situation is not covered, or if you do not understand these instructions or additional information is required, contact *Synergy Lighting Controls*.

⚠ WARNING

Before installing, servicing, or maintaining this equipment, follow these general precautions.

To reduce the risk of electrocution:

- Make sure the equipment is properly grounded.
- Always de-energize any equipment before connecting to, disconnecting from, or servicing the equipment.

To reduce the risk of fire:

- Use supply conductors with a minimum installation temperature rating as specified.

To reduce the risk of personal injury from cuts, abrasions:

- Wear gloves to prevent cuts or abrasions from sharp edges when removing from carton, handling and maintaining this equipment.
- Do not install a damaged equipment.

Synergy Lighting Controls, a division of *Acuity Brands Inc.*, assumes no responsibility for claims arising out of improper or careless installation or handling of this product.

SAVE THESE INSTRUCTIONS

Installation Instructions

SYPM Plate, SYA 2POLE, 3POLE, 4POLE

Before You Start

1. Always disconnect all power.
2. Install in accordance with the National Electrical Code and any other codes which may apply.
3. Use only as intended.
4. Use only accessories recommended by Lithonia Control Systems.
5. Use only at voltage listed on product labels.

Important Module Installation Notes

1. This module does not plug into the ribbon cable. Install in a convenient module position.
2. Verify that load type is compatible with voltages, loads and capacity listed on the relay.
3. Test branch circuits for short circuits **prior** to energizing module.
4. Relay input and output terminal specification:
2 and 4 pole - (1) #8, #10, #12 or (2) #12 AWG maximum.
3 pole - (1) #2 - #12, or (2) #10 - 12 AWG maximum.

Module Installation and Wiring

1. **MOUNT RELAYS**
Mount 2, 3 or 4 pole relays to the plate using the holes identified in *Figure 1*. Up to 4 relays can be installed per plate.
2. **MOUNT THE PLATE**
Mount the module in the cabinet by setting the bottom tabs in the slots at the back of the cabinet then securing the top with the screws provided..
3. **INSTALL MODULES**
Install additional modules per their specific instruction sheets.

Module Installation and Wiring Cont.

4. **CONNECT COIL**
Connect the coil of the 2, 3 or 4 pole relay to the terminal block (TB1-TB8) of a SYPM 8R, 8H or 8F module. Connect the line side of the terminal block (TB1-TB8) to a branch circuit of the proper voltage as indicated on the 2, 3 or 4 pole relay coil. See *Figure 2* for wiring details.

Note:

SEE AS-BUILT DRAWINGS (IF FURNISHED) FOR SPECIFIC CIRCUIT AND TERMINAL BLOCK NUMBERS FOR YOUR PROJECT.

5. Connect the contacts of the 2, 3 or 4 pole relay to a source and load as shown in the example wiring of *Figure 2*.
6. **START-UP POWER MODULES TO ALLOW MANUAL LIGHTING CONTROL**
Following this procedure step by step will reduce the chance of damage due to relay closing on a short circuit. **Module warranty void if relay closes on a short circuit.**
 1. Turn off all Branch Breakers.
 2. Verify the 8R, 8H or 8F power module "manual override switch" is in the ON position. See the *8R, 8H or 8F power module installation instruction sheet* for details.
 3. Turn on the circuit breaker for the enclosure power supply.
 4. Turn on the branch breakers. Use the manual override switch for convenient on/off override.

Visit Synergy Lighting Controls on the internet at <http://www.synergylightingcontrols.com> for further information on products, technical data or installation instructions.

Warranty

Synergy Lighting Controls warrants all equipment to be free from defect in manufacturing under normal and proper storage, installation, and operation for a period of one (1) year. Our guarantee liability extends only to the repair or replacement of the defective part and no labor charges for correction of the defect by repair or replacement will be honored by Synergy Lighting Controls unless prior written authorization has been granted by our Customer Service Department.

Installation Instructions

SYPM Plate, SYA 2POLE, 3POLE, 4POLE

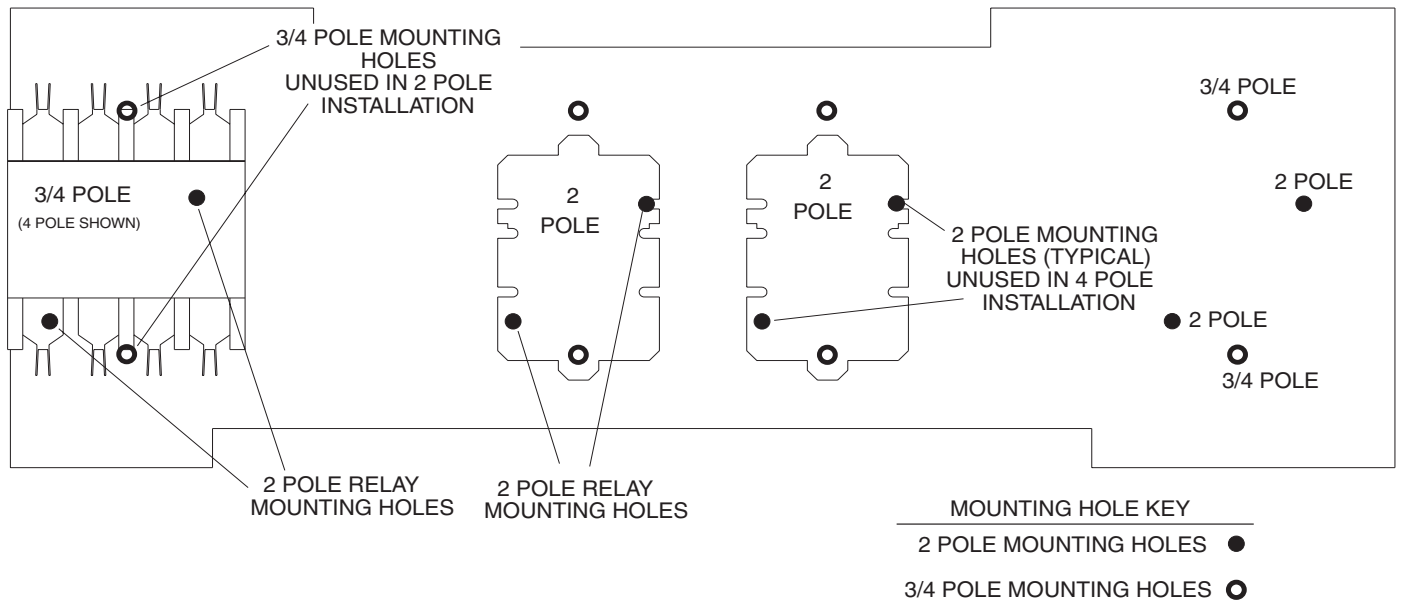


Figure 1 - Example Mounting Detail

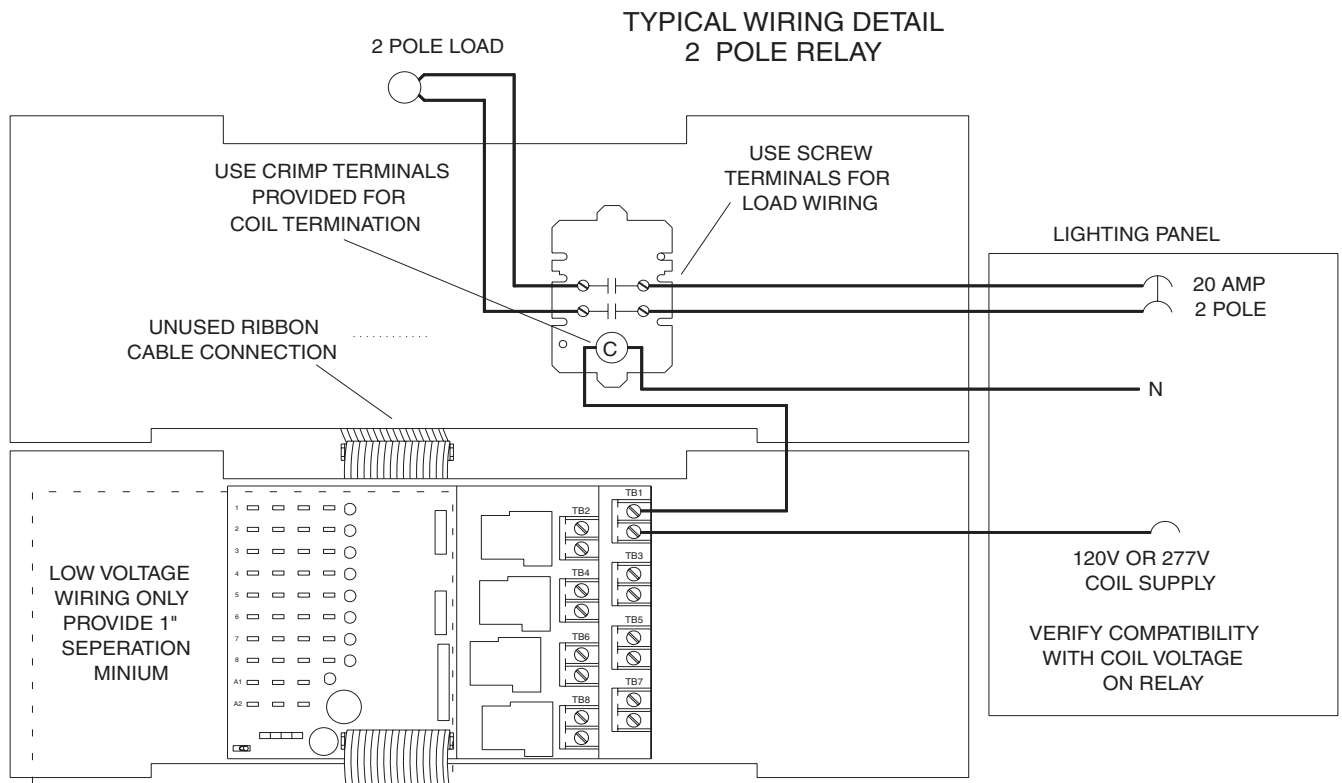


Figure 2 - Example Wiring Detail