

## Low Voltage Momentary Switch

### Intended Use

Lithonia LVMS switches and WPM wallplates provide a durable and attractive solution for configuring low voltage control switch assemblies. Switches snap-fit into the wallplates and are supplied with push-on connectors for low voltage wire

connections. Wallplates are offered in a variety of sizes and configurations and may be engraved with customer-supplied labels. Use with Synergy® or SwitchPak™ lighting control panels.

Classification – Class 2 low voltage device.

**LVMS**  
**WPM**

### Ordering Information

Example: **LVMS PILOT WH**

Series	Options	Color
<b>LVMS</b>	(blank) Standard switch <b>PILOT</b> Pilot light switch <b>KEY</b> Key operated switch	<b>IV</b> Ivory <b>WH</b> White
	<b>FILLER</b> Snap-in blank filler <b>PILOT KEY</b> Key-operated switch with pilot	

### Ordering Information

Example: **WPM 1G 4MS WH**

Series	Number of gangs	Number of openings	Finish	Options
<b>WPM</b>	<b>_G</b> 1 to 10 <sup>1</sup>	<b>_MS</b> 1 to 20 <sup>2</sup>	<b>BS</b> Brushed stainless <b>WH</b> Painted white <b>IV</b> Painted ivory	<b>LE</b> Custom labeling <sup>3</sup>



#### NOTES:

- Plates larger than four gangs may have longer lead times.
- Must equal the number of gangs (one switch per gang) or two times the number of gangs (two switches per gang).
- Two lines, seven characters per line for two switches per gang plate or two lines, 12 characters per line for one switch per gang plate.

### Intended Use

Lithonia LVDS switches and DSA wallplates provide a durable and attractive low voltage switch solution with a standard strap-mount form

factor and designer styling. Switches may be ganged with other Decora® style devices. DSA wallplates are offered in a variety of sizes and finishes. Use with Synergy® or SwitchPak® lighting control panels.

## Low Voltage Decora® Switch

**LVDS**  
**DSA FP**

### Ordering Information

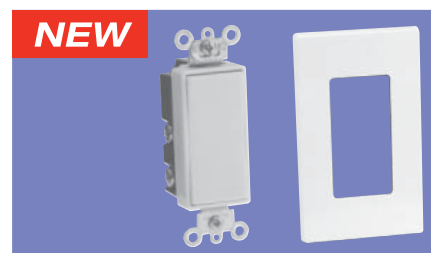
Example: **LVDS WH**

Series	Color
<b>LVDS</b>	<b>WH</b> White <b>IV</b> Ivory <b>GY</b> Gray <sup>1</sup>

### Ordering Information

Example: **DSA FP D1 WH**

Series	Number of openings	Color
<b>DSA FP</b>	<b>D_</b> 1 to 6	<b>WH</b> White <b>IV</b> Ivory <b>GY</b> Gray <sup>1</sup>



#### NOTES:

- Additional delivery time and/or cost may be associated with these premium colors.

### Intended Use

Provides individual local line voltage override control of lighting in time-based control schemes. Can be used manually to turn lighting on and off in the normal manner. Resets itself automatically to the off position in response to a programmed power interruption signal provided by the lighting control panel.

Works like a standard wall switch for on/off operation. Automatically resets to off when power is removed for approximately five seconds. Switch

handle is lighted for easy location in the dark.

Wires to a 120V or 277V circuit switched by a Synergy® or SwitchPak™ relay panel like a standard toggle switch, is not line/load sensitive and does not require a neutral connection.

Strap-mount device; mounts in a standard single gang switch box and uses a standard toggle opening wallplate (not included).

### Listings

UL Listed. CSA Certified.

**SSPL**  
**SweepSwitch®**



### Ordering Information

Example: **SSPL 05 277**

Series	Load amperage	Voltage
<b>SSPL</b>	<b>05</b> 0.1 to 5.0 amps <b>20</b> 1.0 to 20 amps	<b>277</b> 120V or 277V (dual voltage)