

Catalog Number	
Notes	Type

FEATURES

The SYA IPCL photosensor is an ambient light sensing device that connects to a Synergy™ panel, Synergy Remote Station (SYRSP EXT or DEQ LC), SwitchPak or SIMPLY5 Sensor Connector (S5SC), as an analog input. The photosensor provides control of lighting in response to ambient light conditions.

- Indoor applications
- Color compensated to provide accurate readings
- Easy mounting
- Class-2 wiring
- Linear response curve
- Multiple set-points from a single photocell when used with Synergy or SwitchPak panels
- Ideal for Open Loop operation operation in Daylight-Harvesting applications
- Switch or dim loads based on light level

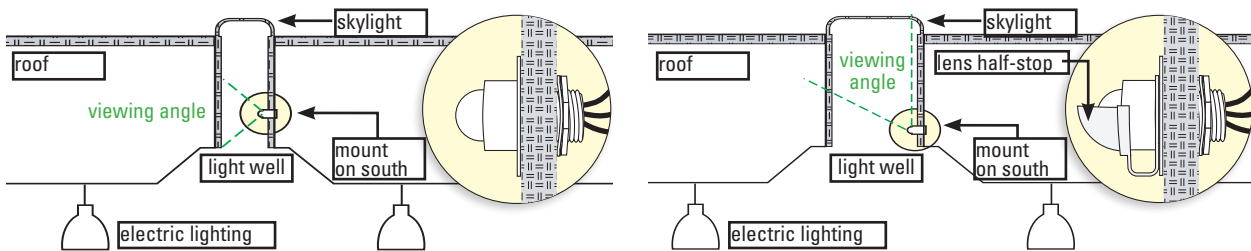
SYA IPCL

INDOOR ANALOG PHOTOSENSOR

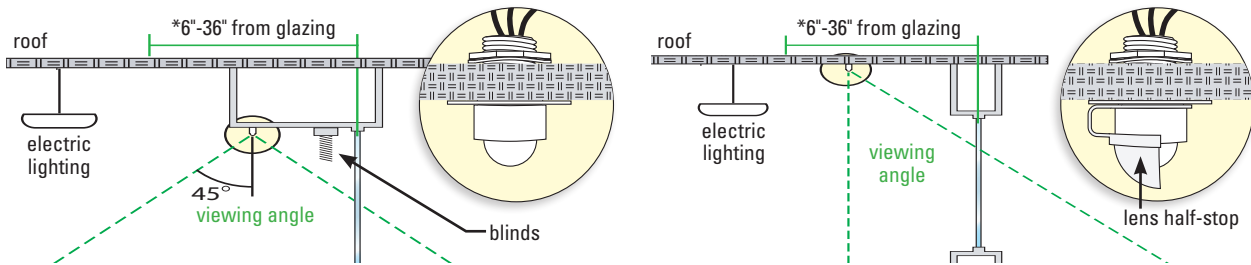


INSTALLATION

The SYA IPCL is best used in Open Loop applications. Open Loop is defined as when the photosensor VIEWS DAYLIGHT ONLY, and does not respond to or "see" the electric light it controls.



Open Loop Top-Lit Applications: To avoid direct exposure to sunlight, photosensor placement shall be on the south face of the light well (facing north) mounted toward the bottom of the light well. If placement cannot be isolated from electric light, then the contribution from electric light can be minimized with an Indoor Photosensor Lens Half-Stop.



Open Loop Side-Lit Applications: Photosensor placement should be as close as possible to vertical glazing. Window treatments, such as blinds, should be inside the photosensor viewing angle. Placement is usually in the window well or the ceiling mounted near the window. Placement from 6"-36" is acceptable as long as the light seen from the window is the major contributor. This may require the use of an Indoor Photosensor Lens Half-Stop.

ORDERING INFORMATION

Choose the boldface catalog nomenclature that best suits your needs and write it on the appropriate line. Order accessories as separate catalog number.

Example: **SYA IPCL**

SYA IPCL
Series
SYA IPCL Analog photosensor

SYA IPCL Indoor Photosensor

SPECIFICATIONS

MECHANICAL

- Indoor Sensor – Mounts to accessible ceiling tile or light well with supplied nut and washer, or to 1/2" knockout. Mount from 6 inches to 36 inches from windows, central to the area being controlled.

CONSTRUCTION

- Material – UV stabilized plastic.
- Color – White.

ENVIRONMENTAL

- Operating Temperature: 32-105°F (0-41°C).
- 10-90% non-condensing

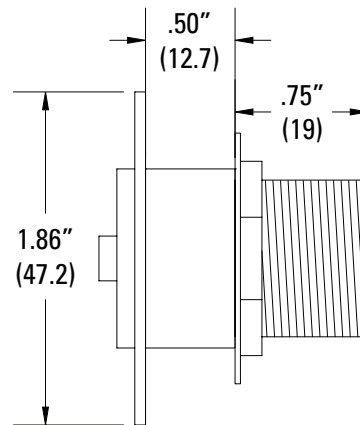
FUNCTIONAL

- Response – Linear to ambient light level over entire range. Single set point with deadband to prevent cycling or linked to outputs for multi-step or variable response; transmit up to 100 steps onto Synergy network.

ELECTRICAL

- Accuracy: +/- 1% at 70°F (21°C)
- Input Voltage: 12-24 VDC, Class 2, 3 conductor #18 AWG.
Indoor – 0-100 Fc = 10-0 VDC

DIMENSIONS



WIRING DIAGRAM

